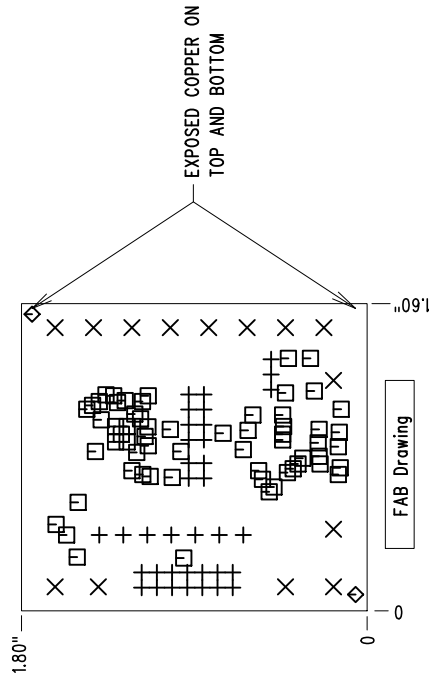


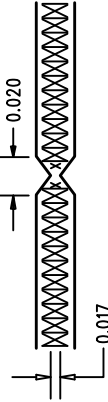
REVISIONS		
REV	DESCRIPTION	DATE

NOTES: UNLESS OTHERWISE SPECIFIED

1. FAB PER IPC-A-600. PCBs ARE TO BE ROHS COMPLIANT.
2. MATERIAL: EPOXY FIBERGLASS, NEMA GRADE FR-4.  
2 OZ. COPPER FINISH ON OUTER LAYERS.  
1 OZ. COPPER FINISH ON INNER LAYERS.  
THICKNESS .062 +/- .006 TOTAL OF 4 LAYERS.  
FLAMMABILITY RATING: 94 V-0 MINIMUM .  
0.00 ARE PRIMARY DATUMS.
3. SIZE: DIMENSIONS AND TOLERANCES SHOWN.
4. DRILLING: DRILL HOLES PER SCHEDULE. PLATE THROUGH HOLES WITH COPPER, .001 INCH THICK MIN. ALL HOLE SIZES ARE SPECIFIED AFTER PLATING.  
HOLE LOCATION TOLERANCES ARE +/- .003 INCH IN RELATION TO CENTER
5. FINISH: SMOBC USING LPI BOTH SIDES COLOR GREEN.  
GOLD IMMERION BOTH SIDES.
6. SILKSCREEN : USING WHITE NON-CONDUCTIVE EPOXY INK.
7. DO NOT ALTER ARTWORK e.g. TO ADD LOGO OR DATE CODE  
BUT YOU MAY MODIFY PAD SIZE TO MEET END FINISH.
8. SCORING: (FOR PRODUCTION RUN ONLY)



SIZE	QTY	SYM	PLATED	TOL
35	36	+	YES	+/-0.0
65	14	X	YES	+/-0.0
10	62	□	YES	+/-0.0
70	2	◇	NO	+/-0.0



FAB DRAWING

UNLESS OTHERWISE SPECIFIED DIMENSIONS ARE IN INCHES TOLERANCES ON ANGLE ± 1 2 PLACE ±.01 3 PLACE ±.005 INTERPRET DIM AND TOL PER ASME Y14.5M - 1994		APPROVALS		LINEAR TECHNOLOGY 1630 McCarthy Blvd. Milpitas, CA 95035 PH: (408)432-1900	
		PCB DESIGNER J. WU	DATE 11/10/10	TITLE: LTC2656BCUFD 12/16-BIT, OCTAL DAC W/REFERENCE	
ENGINEER L. CHEN		DATE 11/10/10	SIZE A	DEMO DC1397B	REV. 1
CHECK			SHT 1 of 1		
SCALE = NONE					