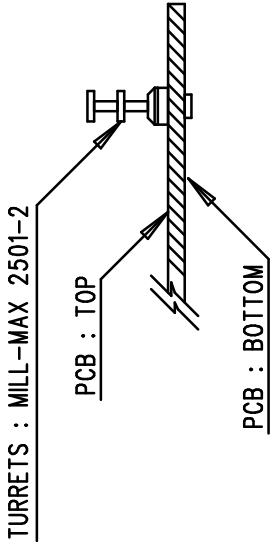
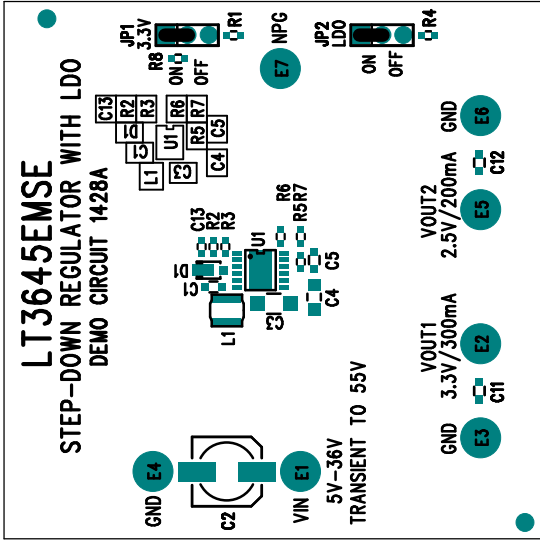


REVISION HISTORY			
ECO	REV	DESCRIPTION	APP. ENG. DATE
-	2	PRODUCTION	JESUS R. 02-23-11

NOTES: UNLESS OTHERWISE SPECIFIED

1. WORKMANSHIP SHALL BE IN ACCORDANCE WITH IPC-A-610.
2. ASSEMBLY PROCESS SHALL INCLUDE: REFLOW SOLDER TOP SIDE SMD. MAXIMUM SOLDER TEMPERATURE IS 240 DEGREES CELSIUS.
3. PARTS TO OMIT WILL BE SPECIFIED ON THE BILL OF MATERIALS. LOCATIONS OF OMITTED PARTS SHALL BE FREE OF SOLDER. MASK THE SOLDER STENCIL WHERE SMT PARTS ARE OMITTED.
4. INSTALL SHUNTS AS SHOWN ON ASSY DRAWING.
5. DEPANELIZE BOARDS AFTER ASSEMBLY AND ROUTE-OUT THE BREAKOUT TABS ON FOUR SIDES OF THE BOARD EDGE.
6. DO NOT APPLY ANY KIND OF ASSEMBLY STAMP OR QA STAMP TO ANY BOARD.



APPROVALS		<div>1630 MCCARTHY BLVD MILPITAS, CA 95035 PH: (408)432-1900 www.linear.com LTC CONFIDENTIAL - FOR CUSTOMER USE ONLY</div> <div>LINEAR TECHNOLOGY</div>		TITLE: TOP ASSEMBLY DRAWING	
PCB DES.	JW			STEP-DOWN REGULATOR WITH LDO	
APP ENG.	JESUS R.			SIZE	IC NO. LT3645EMSE
				N/A	REV. 2
				DEMO CIRCUIT 1428A	
SCALE = NONE		FILENAME: 1428A-2.PCB		SHT 1 OF 1	