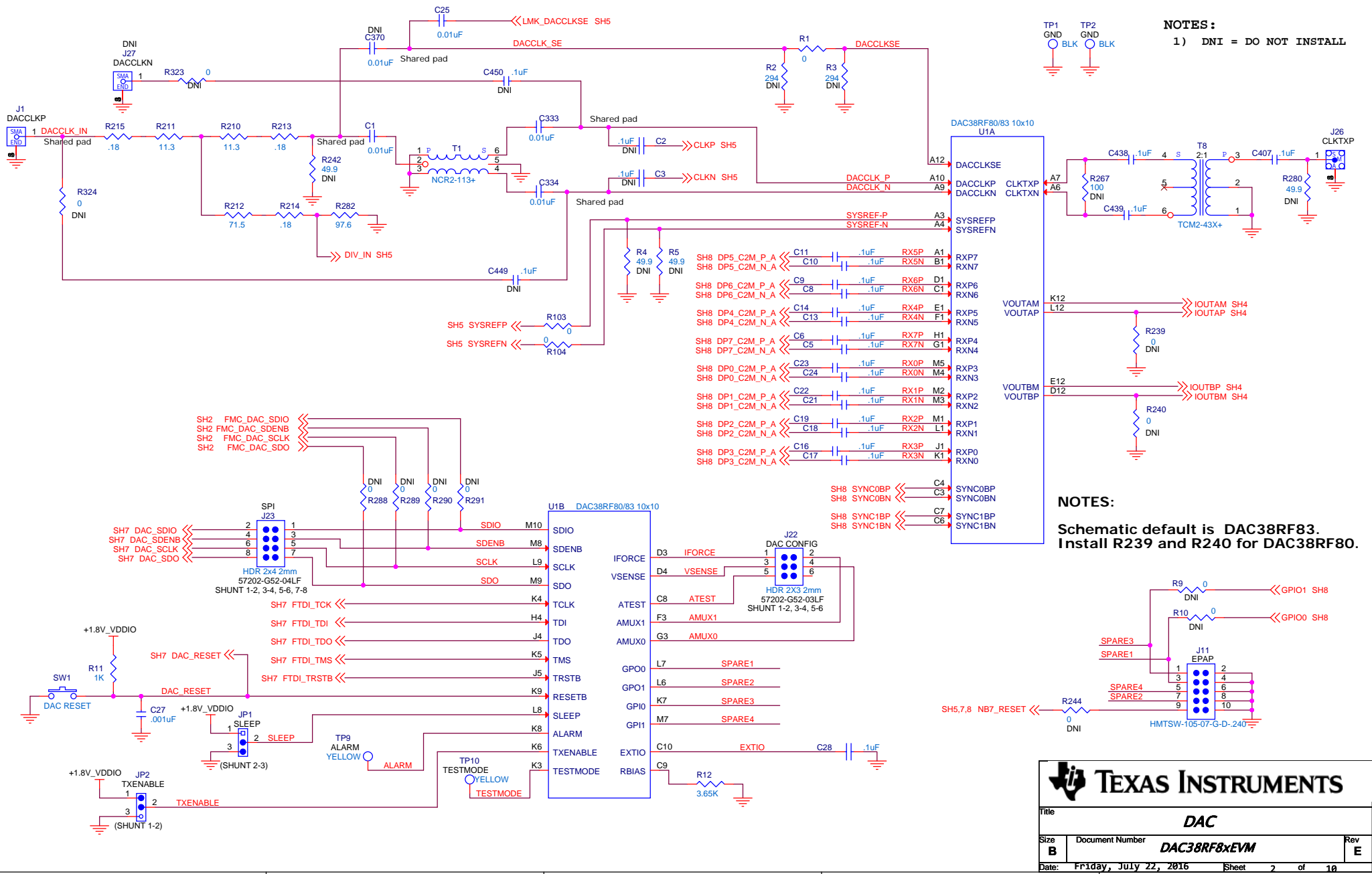


Title		COVER	
Size	Document Number	Rev	
<b>B</b>	<b>DAC38RF8xEVM</b>	<b>E</b>	
Date:	Tuesday, March 01, 2016		Sheet 1 of 10

Drawn: [L NGUYEN](#) 02/2016  
 Engineer: [E DWOBENG](#) 02/2016

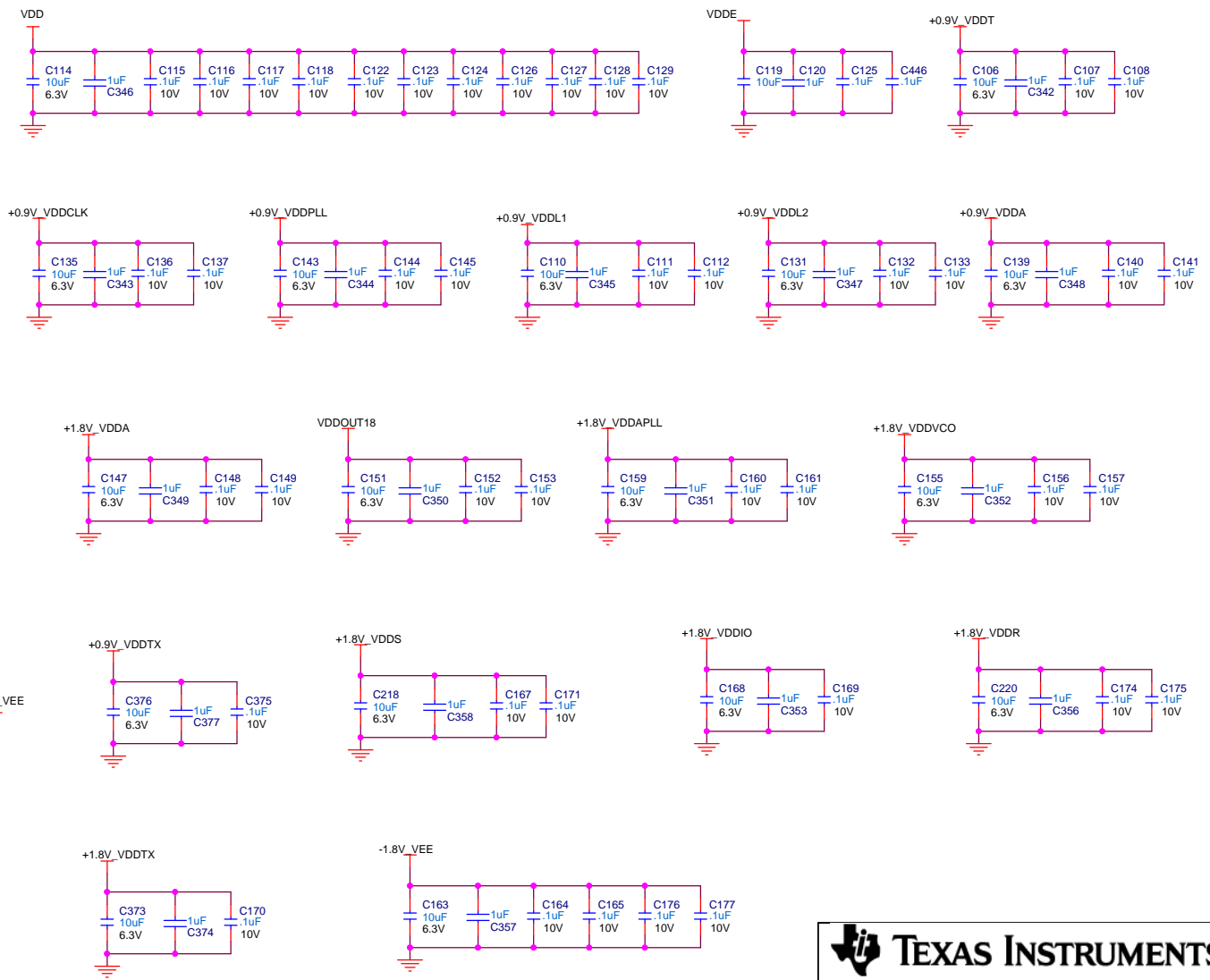
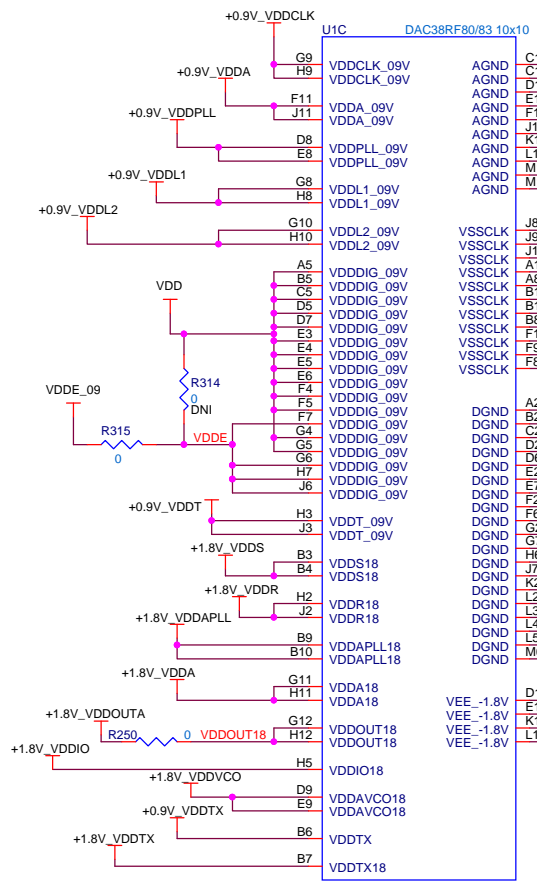


**NOTES:**  
 1) DNI = DO NOT INSTALL

**NOTES:**  
 Schematic default is DAC38RF83.  
 Install R239 and R240 for DAC38RF80.

**TEXAS INSTRUMENTS**

Title			<b>DAC</b>		
Size	Document Number	Rev			
<b>B</b>	<b>DAC38RF8xEVM</b>	<b>E</b>			
Date:	FF1day, JULY 22, 2016	Sheet	2	of	10

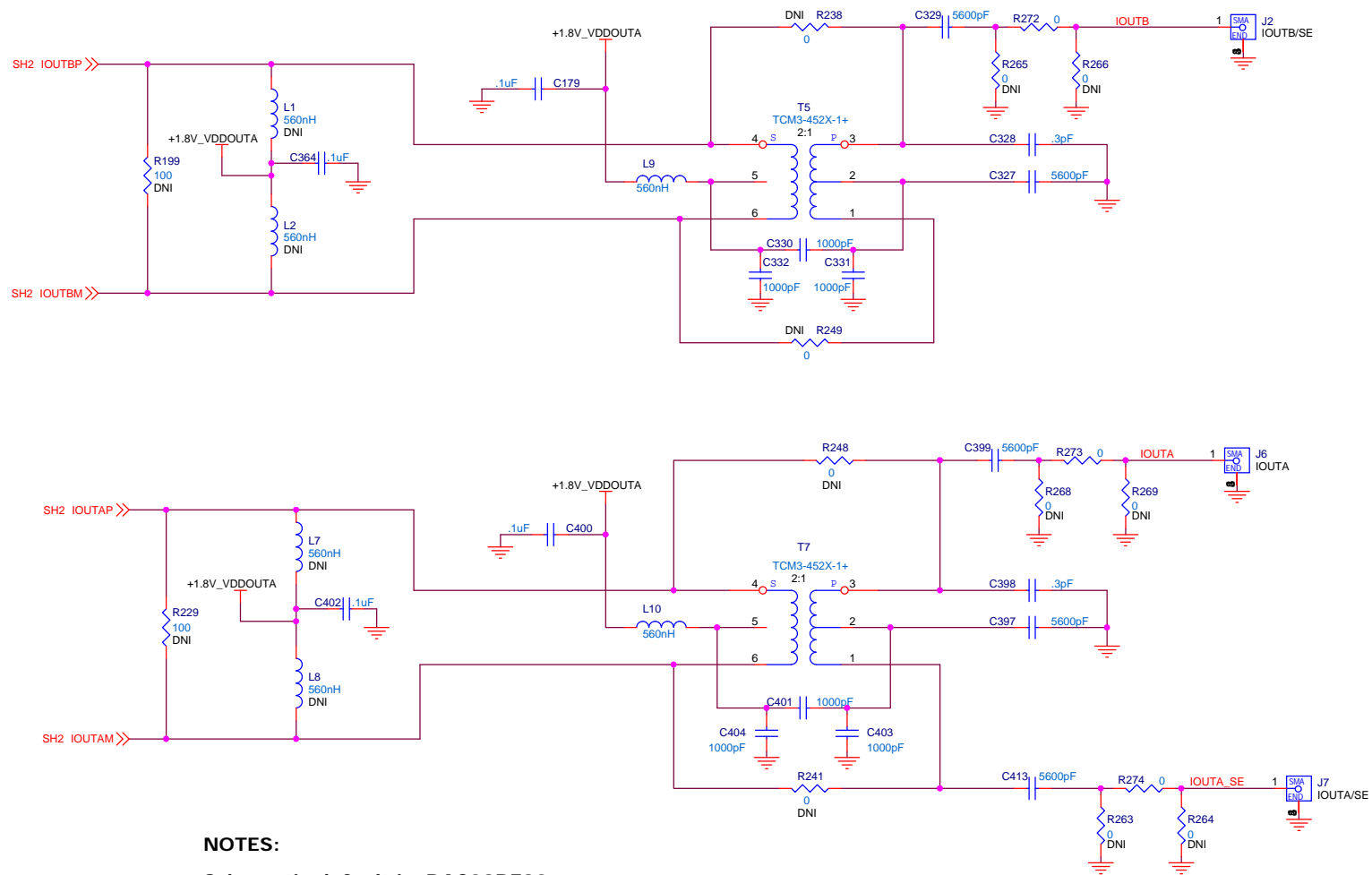


**TEXAS INSTRUMENTS**

Title: **DAC POWER**

Size **B** Document Number **DAC38RF8xEVM** Rev **E**

Date: **Tuesday, March 01, 2016** Sheet **3** of **10**



**NOTES:**

Schematic default is DAC38RF83.

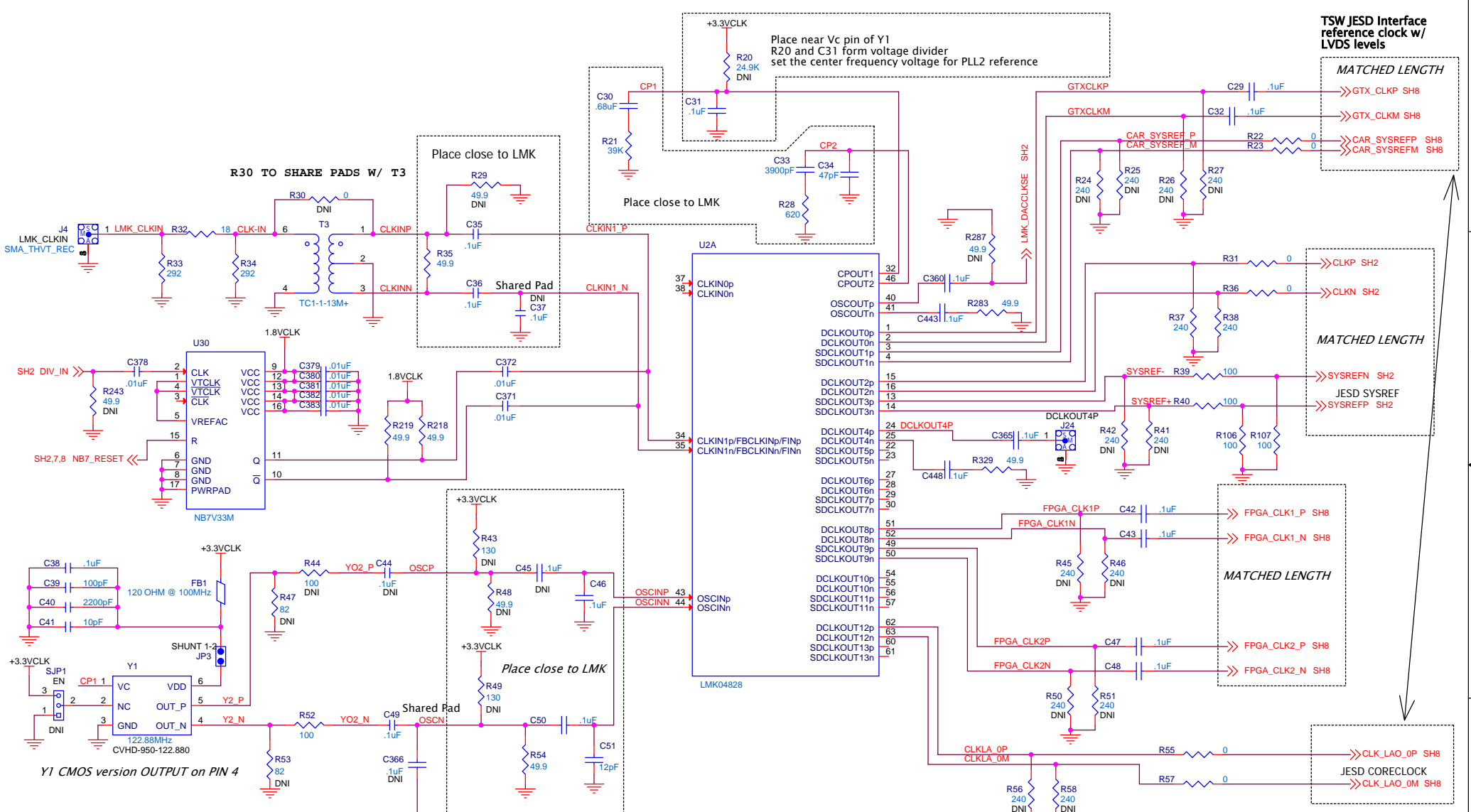
For DAC38RF80:

Install R238, R241  
 DNI C179, C400, L9, L10, T5, T7, C330, C331, C332,  
 C401, C403, C404, C328, C327, C399, R273,  
 C398, C397, J6

**TEXAS INSTRUMENTS**

Title: **DAC OUTPUT**

Size <b>B</b>	Document Number <b>DAC38RF8xEVM</b>	Rev <b>E</b>
Date: <b>Thursday, March 03, 2016</b> Sheet <b>4</b> of <b>10</b>		



TSW JESD Interface reference clock w/ LVDS levels

MATCHED LENGTH

GTX\_CLKP SH8  
GTX\_CLKM SH8  
CAR\_SYSREFP SH8  
CAR\_SYSREFM SH8

MATCHED LENGTH

CLKP SH2  
CLKN SH2  
SYSREFN SH2  
JESD SYSREF  
SYSREFP SH2

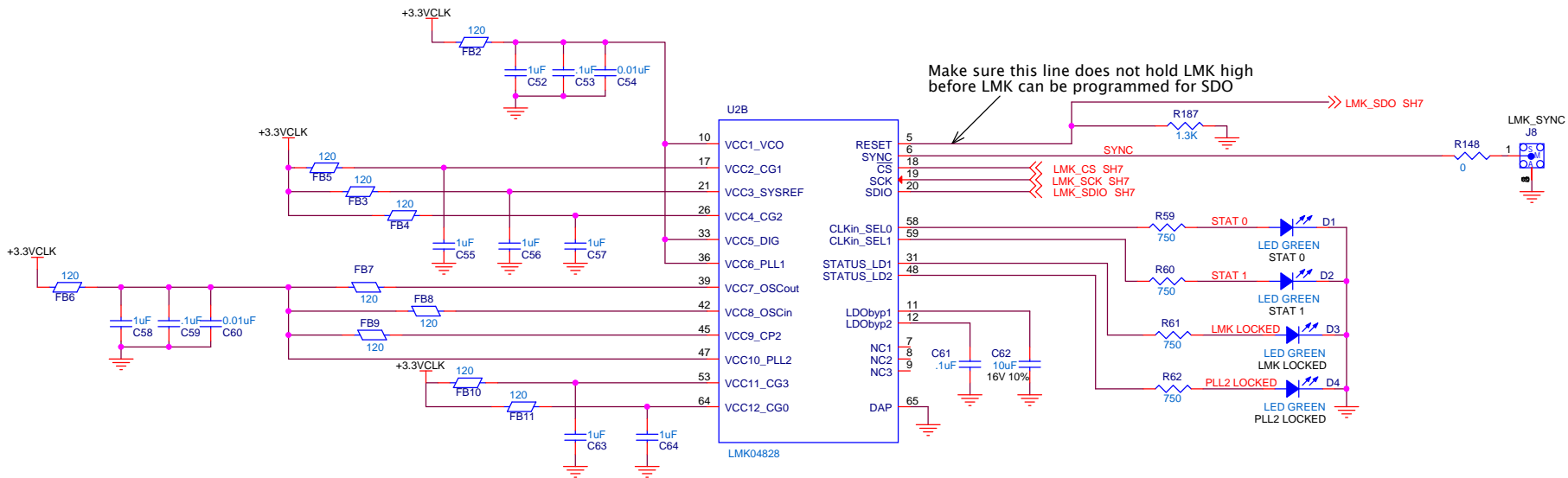
MATCHED LENGTH

FPGA\_CLK1P SH8  
FPGA\_CLK1N SH8  
FPGA\_CLK2P SH8  
FPGA\_CLK2N SH8

CLKLA\_0P SH8  
JESD CORECLOCK  
CLKLA\_0M SH8



Title			<b>LMK</b>		
Size	Document Number				Rev
<b>B</b>	<b>DAC38RF8xEVM</b>				<b>E</b>
Date:	Friday, July 22, 2016	Sheet	5	of	10

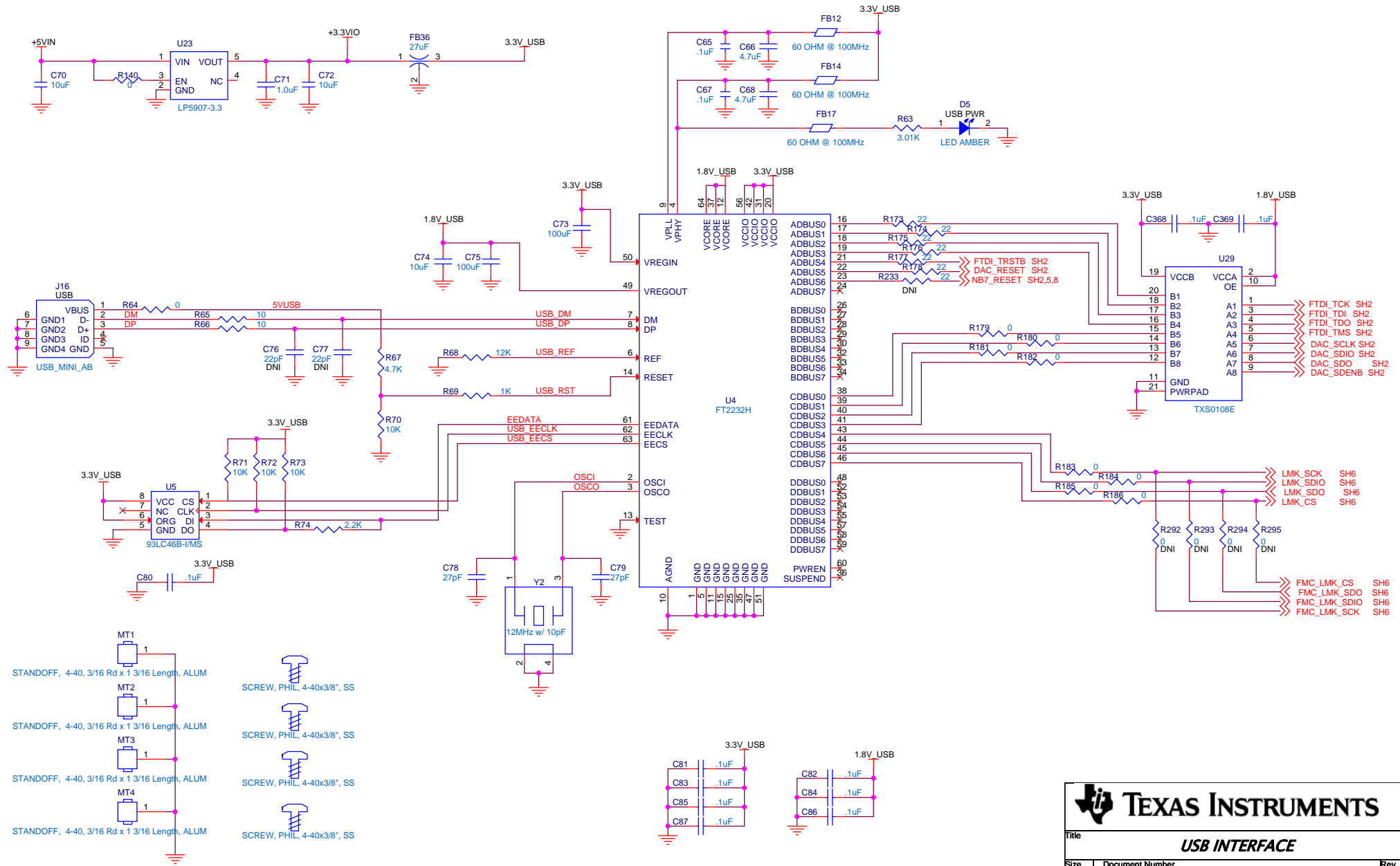


**TEXAS INSTRUMENTS**

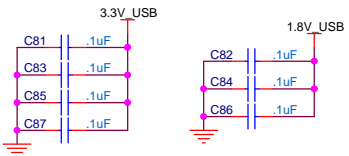
Title: **LMK**

Size: **B** Document Number: **DAC38RF8xEVM** Rev: **E**

Date: **Tuesday, March 01, 2016** Sheet: **6** of **10**



- MT1  
STANDOFF, 4-40, 3/16 Rd x 1 3/16 Length, ALUM
- MT2  
STANDOFF, 4-40, 3/16 Rd x 1 3/16 Length, ALUM
- MT3  
STANDOFF, 4-40, 3/16 Rd x 1 3/16 Length, ALUM
- MT4  
STANDOFF, 4-40, 3/16 Rd x 1 3/16 Length, ALUM
- SCREW, PHIL, 4-40x3/8", SS
- SCREW, PHIL, 4-40x3/8", SS
- SCREW, PHIL, 4-40x3/8", SS
- SCREW, PHIL, 4-40x3/8", SS

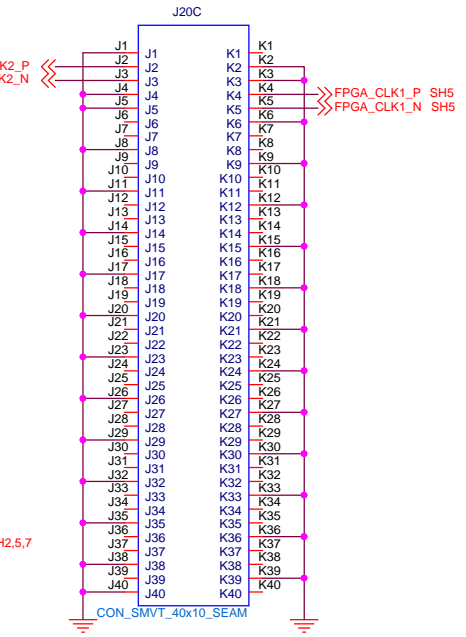
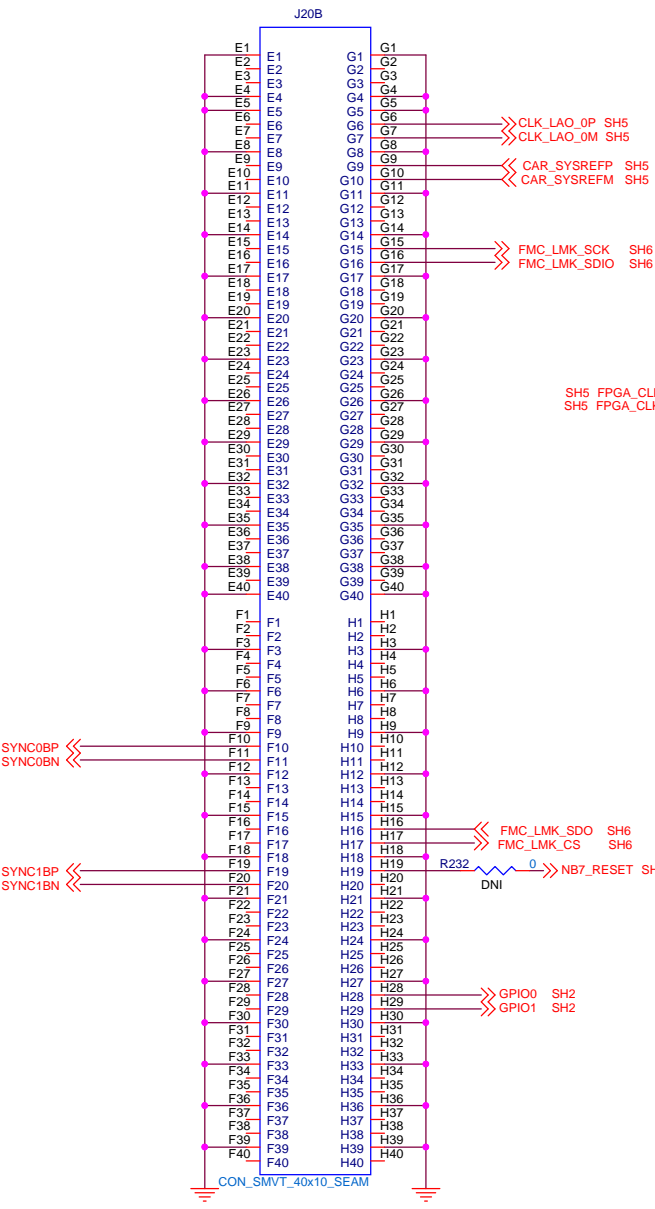
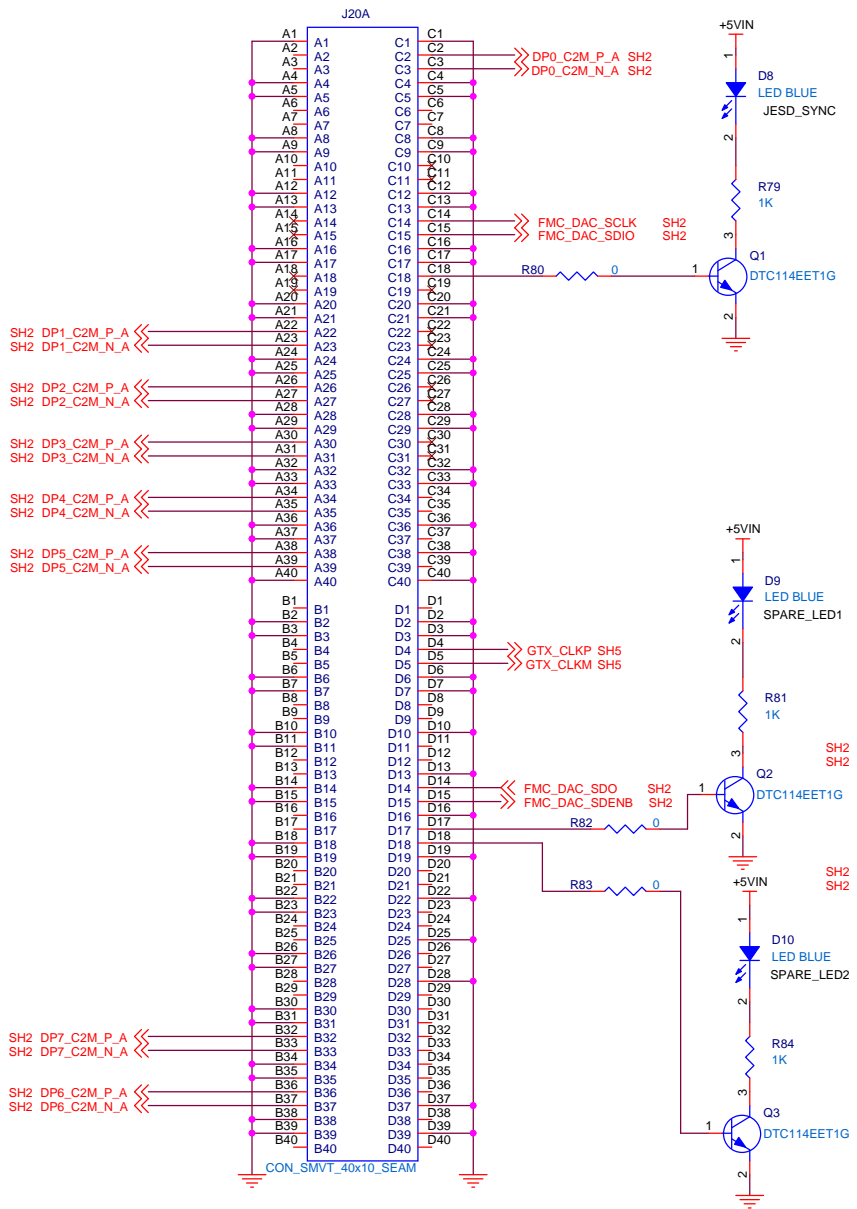


**TEXAS INSTRUMENTS**

Title: **USB INTERFACE**

Size <b>B</b>	Document Number <b>DAC38RF8xEVM</b>	Rev <b>E</b>
---------------	-------------------------------------	--------------

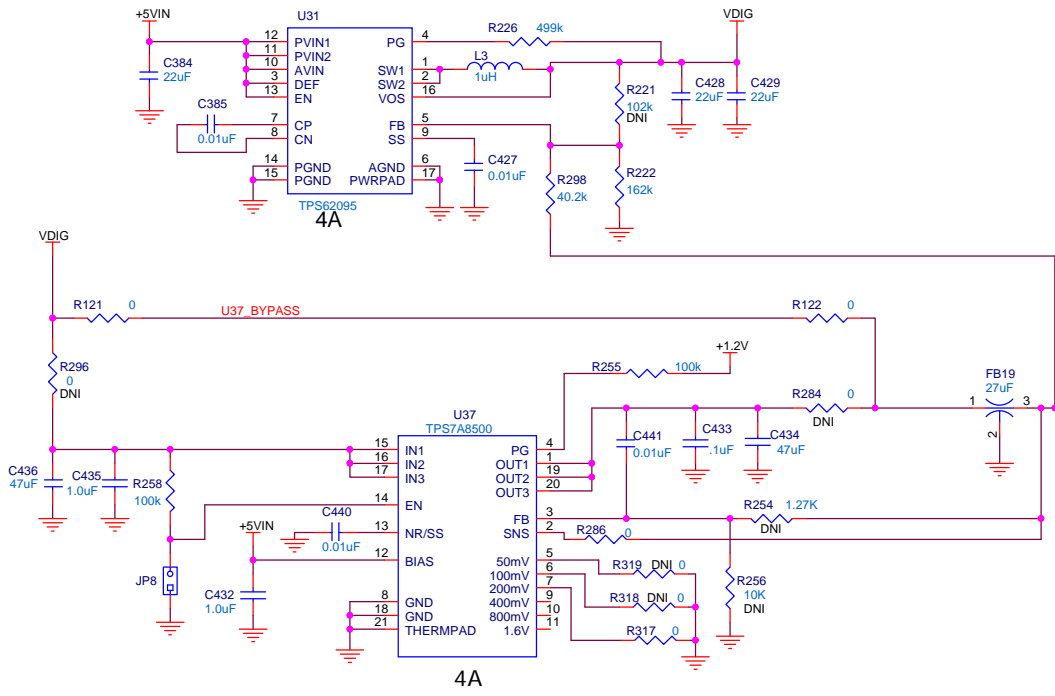
Date: Thursday, March 03, 2016 Sheet 7 of 10



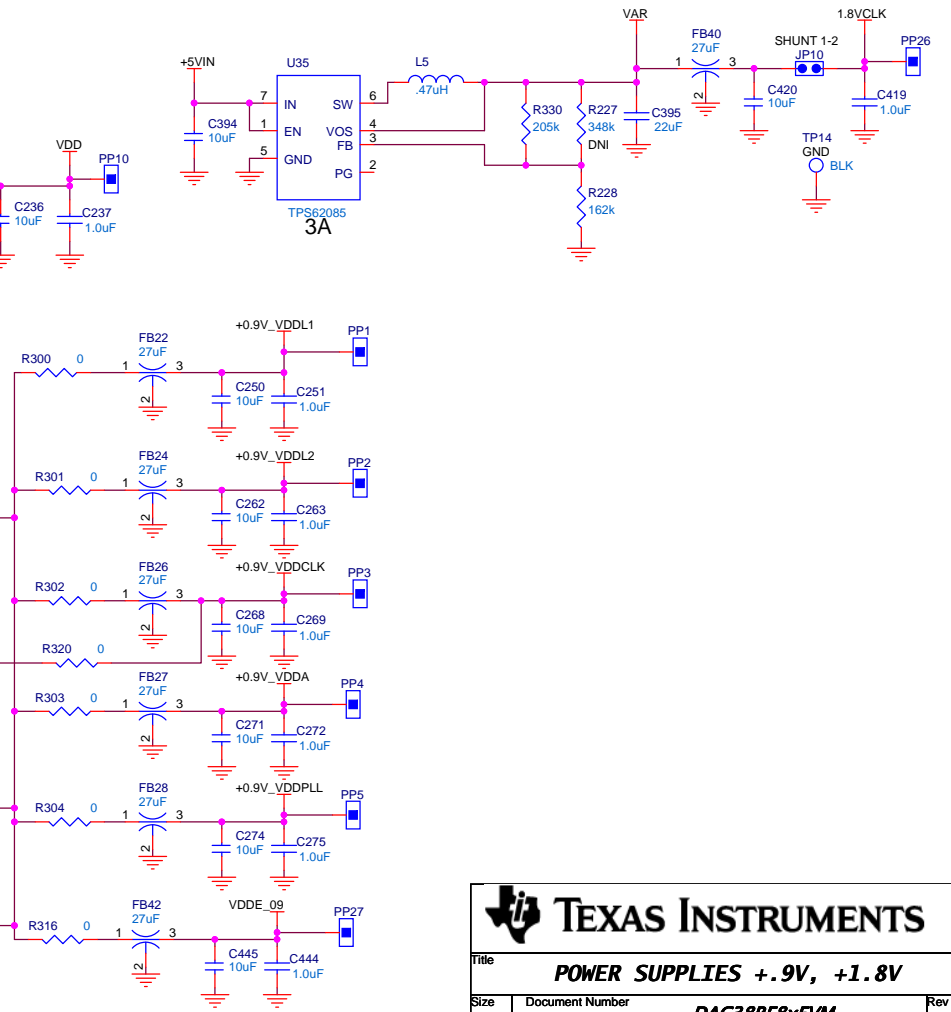
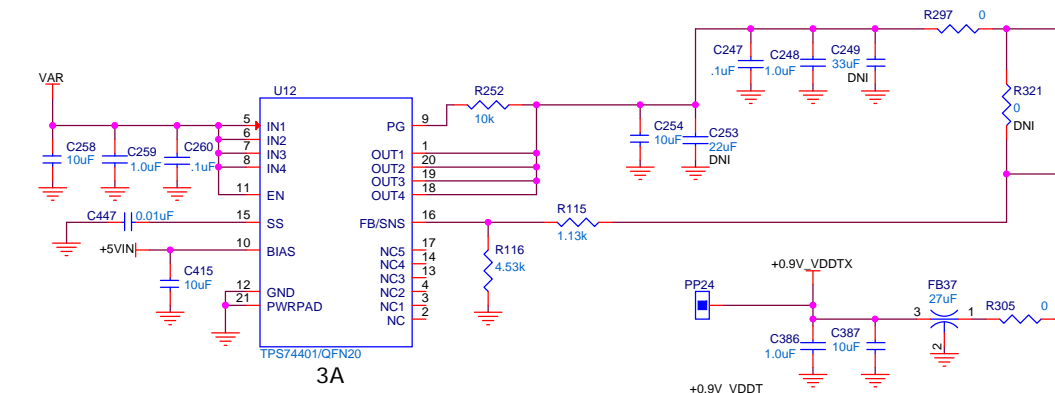
SH2 DP1\_C2M\_P\_A  
SH2 DP1\_C2M\_N\_A  
SH2 DP2\_C2M\_P\_A  
SH2 DP2\_C2M\_N\_A  
SH2 DP3\_C2M\_P\_A  
SH2 DP3\_C2M\_N\_A  
SH2 DP4\_C2M\_P\_A  
SH2 DP4\_C2M\_N\_A  
SH2 DP5\_C2M\_P\_A  
SH2 DP5\_C2M\_N\_A  
SH2 DP7\_C2M\_P\_A  
SH2 DP7\_C2M\_N\_A  
SH2 DP6\_C2M\_P\_A  
SH2 DP6\_C2M\_N\_A

SH5 FPGA\_CLK2\_P  
SH5 FPGA\_CLK2\_N  
FPGA\_CLK1\_P SH5  
FPGA\_CLK1\_N SH5  
SH2 SYNC0BP  
SH2 SYNC0BN  
SH2 SYNC1BP  
SH2 SYNC1BN  
FMC\_LMK\_SDO SH6  
FMC\_LMK\_CS SH6  
NB7\_RESET SH2,5,7  
GPIO0 SH2  
GPIO1 SH2

**TEXAS INSTRUMENTS**  
 Title 12500 11 Boulevard, Dallas, Texas 75243  
**FMC**  
 Size B Document Number **DAC38RF8xEVM** Rev E  
 Date: Tuesday, March 01, 2016 Sheet 8 of 10



NOTES:  
 To bypass LDO U37: Install R298, R121, R122  
 DNI R221, R296, R284  
 To use LDO U34 (U35 output = 2.5V): DNI R330  
 Install R227

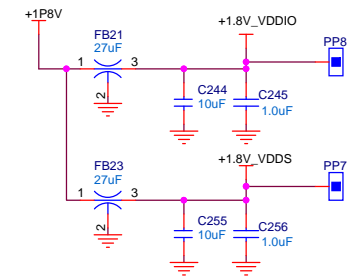
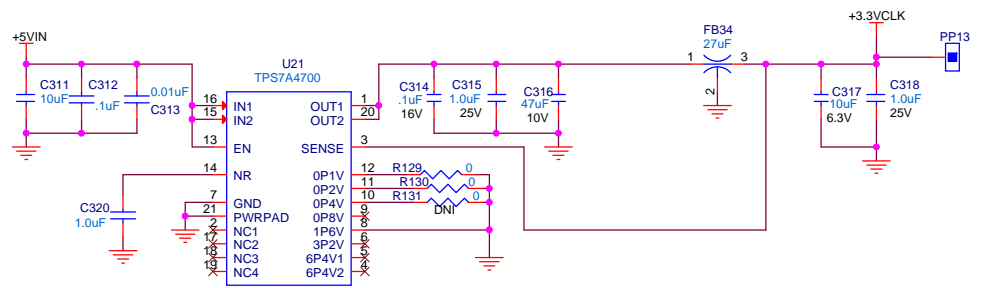
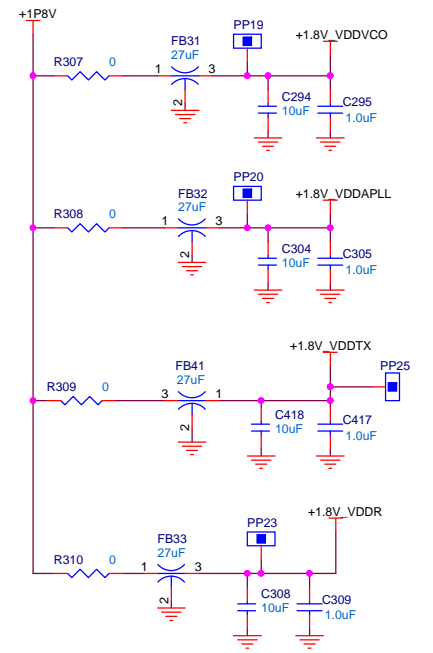
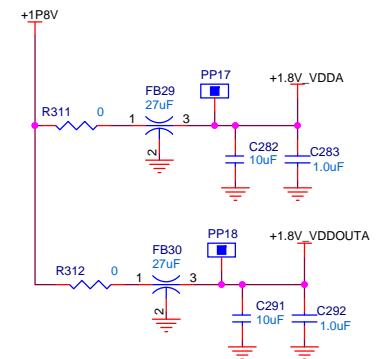
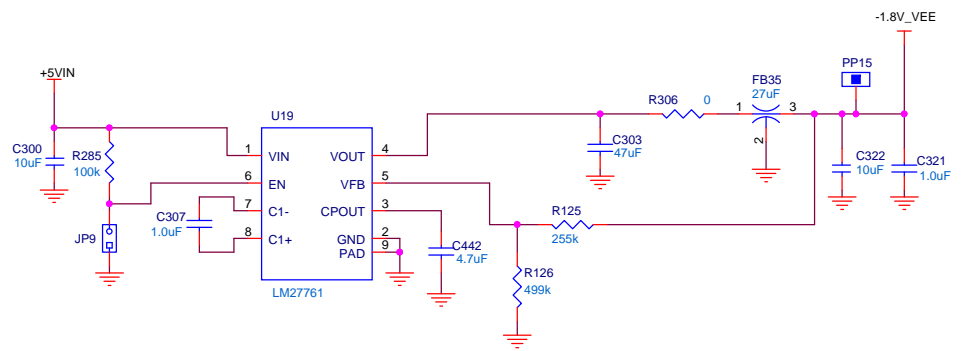
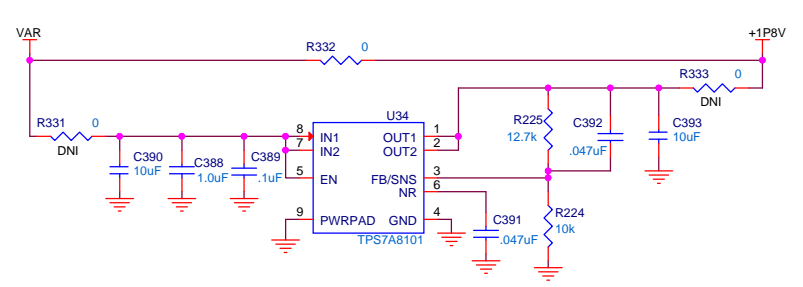
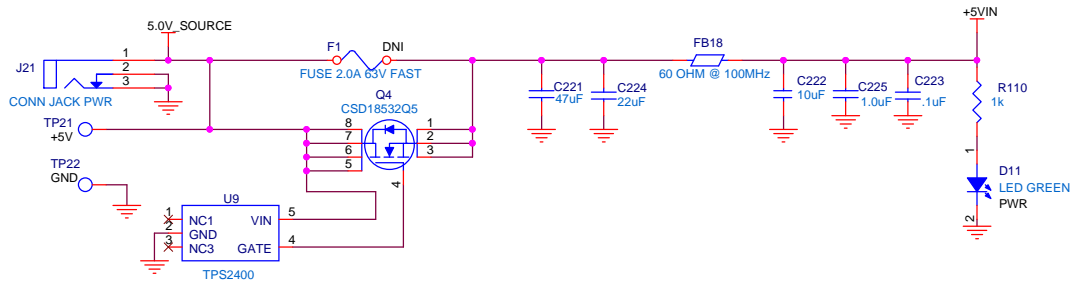


**TEXAS INSTRUMENTS**

Title: **POWER SUPPLIES +.9V, +1.8V**

Size **B** Document Number **DAC38RF8xEVM** Rev **E**

Date: Tuesday, March 01, 2016 Sheet 9 of 10



**TEXAS INSTRUMENTS**

Title: **POWER SUPPLIES**

Size **B** Document Number: **DAC38RF8xEVM** Rev **E**

Date: **Tuesday, March 01, 2016** Sheet **10** of **10**