

8

7

6

5

↓

4

3

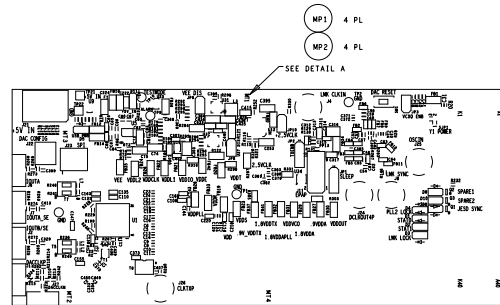
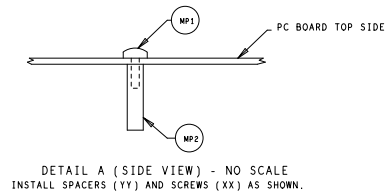
2

1

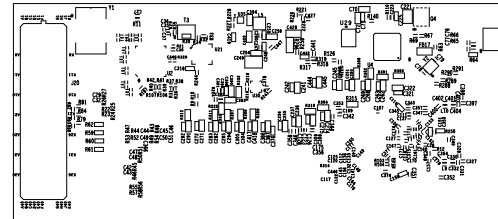
THIS DRAWING IS INTENDED TO HELP IN THE ASSEMBLY OF THE DESIGN.

- 1. REFER TO ODB++ FILE FOR SPECIFIC COMPONENT LOCATION INFORMATION.
- 2. USE WATER SOLUBLE FLUX DURING BOARD ASSEMBLY.
RoHS COMPLIANT AND LEAD FREE.
- 3. MARK BOARD'S SILKSCREEN AND ESD BAG WITH THE APPROPREATE EVM PART NUMBER.
- 4. IPC-A-610 / ACCEPTABILITY OF ELECTRONIC ASSEMBLIES, CLASS 2, CURRENT REVISION.
- 5. SEE HEATSINK SPEC DRAWING FOR INSTALLATION REFERENCE.

REVISIONS				
ZONE	LTR	DESCRIPTION	DATE	APPROVED



TOP VIEW



SILKSCREEN BOTTOM
BOTTOM VIEW

UNLESS OTHERWISE SPECIFIED DIMENSIONS ARE IN INCHES TOLERANCES ARE: FRACTIONS DECIMALS ANGLES /- .XX +/- .01 +/- .XXX +/- .005 +/-	CONTRACT NO.		TEXAS INSTRUMENTS INC.			
	APPROVALS	DATE				
MATERIAL SEE NOTE 5	DRAWN	L. NGUYEN	ASSEMBLY DRAWING DAC38RF8xEVM			
	ENGR	E. DWOBENG				
FINISH SEE NOTES 7, 8, 9			SIZE B	CODE IDENT NO. 	DRAWING NO. 	REV. E
DO NOT SCALE DRAWING			SCALE NONE	SHEET 1 OF 1		

8

7

6

5

↑

4

3

2

1