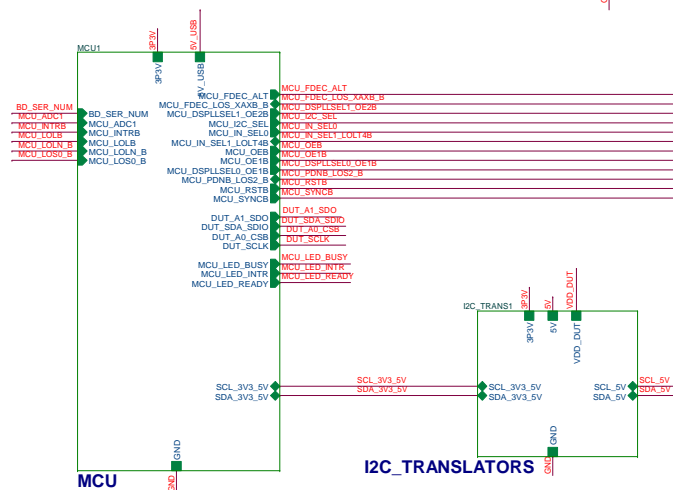
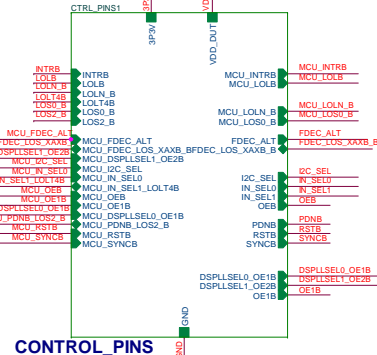
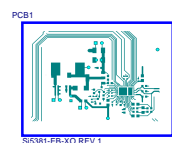



To ascend from a block schematic, right click and select "Previous View".



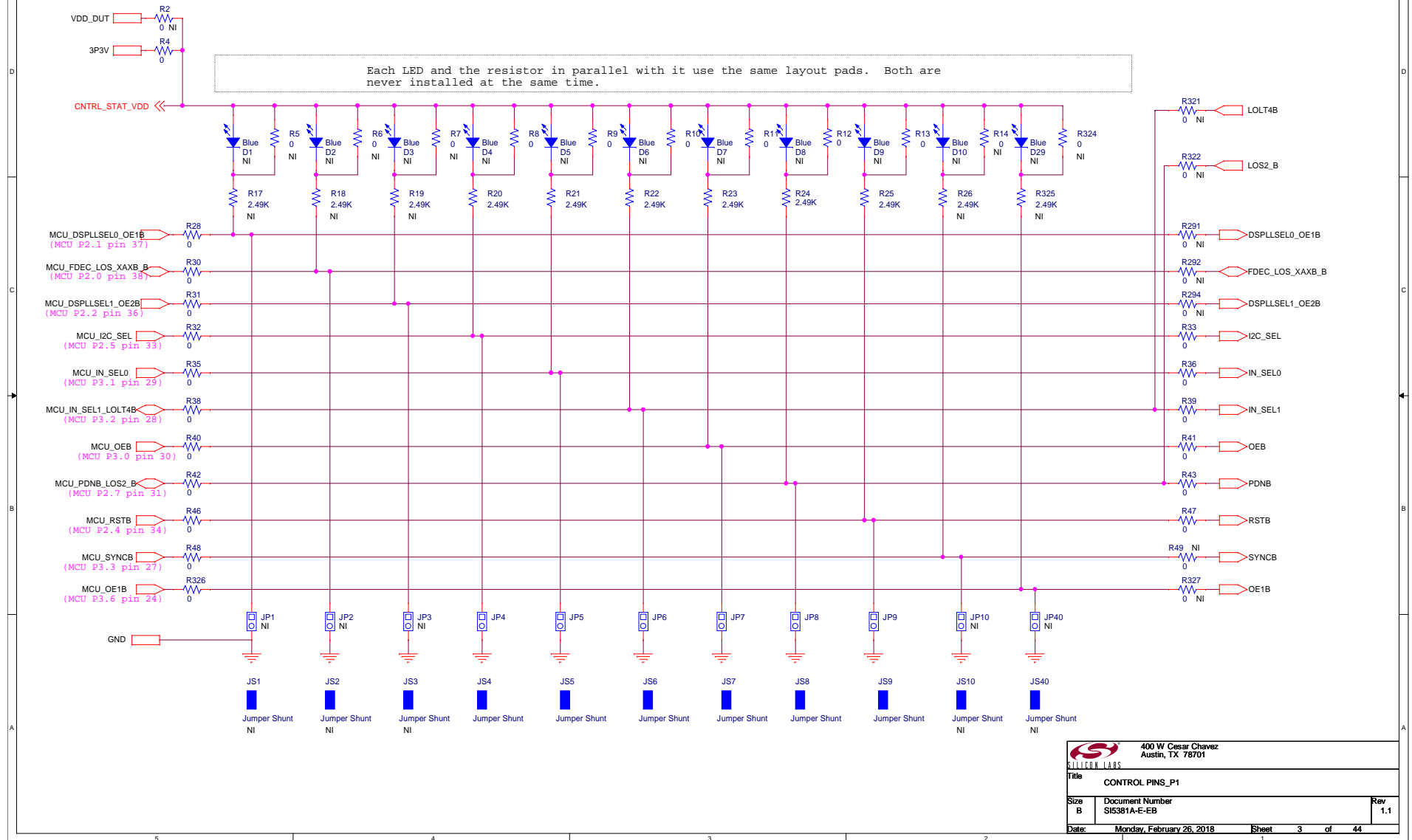
REVISION CONTROL

Rev 1.0 - October 27, 2017, Initial Board Release
Travis Turner

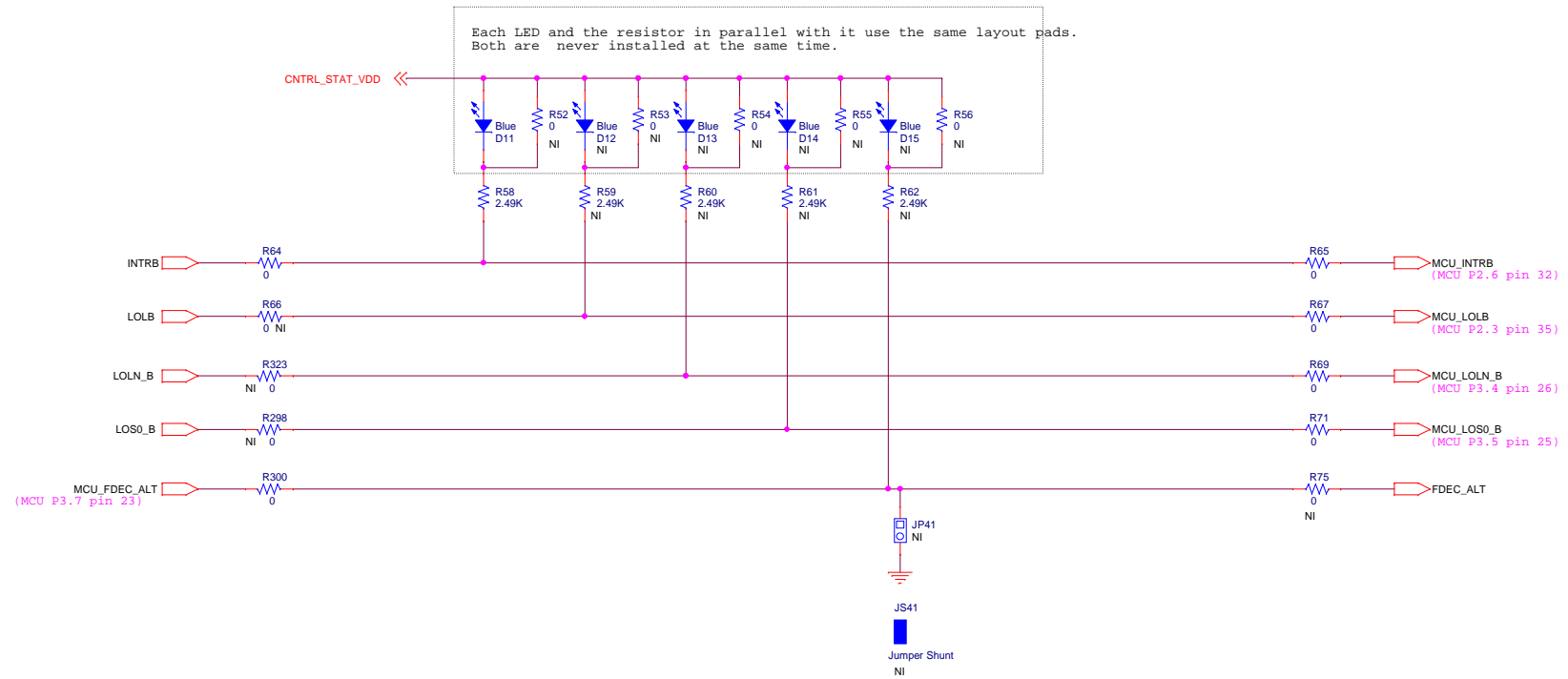
Rev 1.1 - Feb 26, 2018, Change X1 to part # 7X54070001
Travis Turner

		400 W Cesar Chavez Austin, TX 78701	
SILICON LABS			
Title SI5381-EB_TOP_REVISION			
Size B	Document Number SI5381A-E-EB		Rev 1.1
Date: Monday, February 26, 2018		Sheet	2 of 44

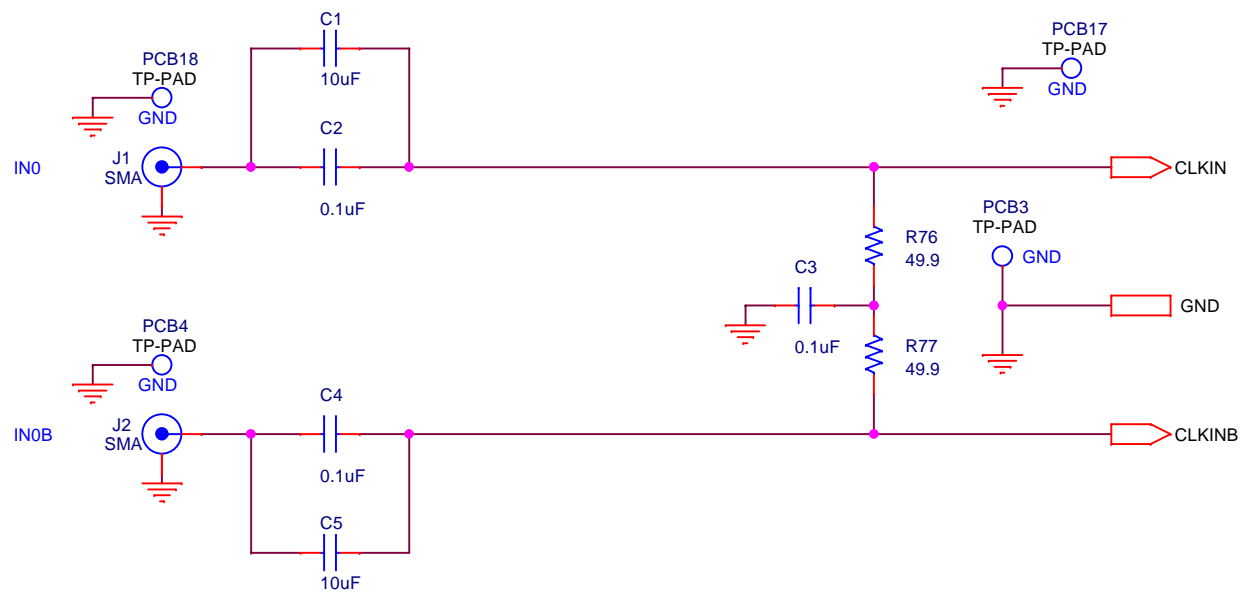
CONTROL PINS CONNECTIONS



CONTROL PINS CONNECTIONS



400 W Cesar Chavez Austin, TX 78701		
Title		
CONTROL_PINS_P2		
Size	Document Number	Rev
B	SI5381A-E-EB	1.1
Date:	Monday, February 26, 2018	Sheet 4 of 44



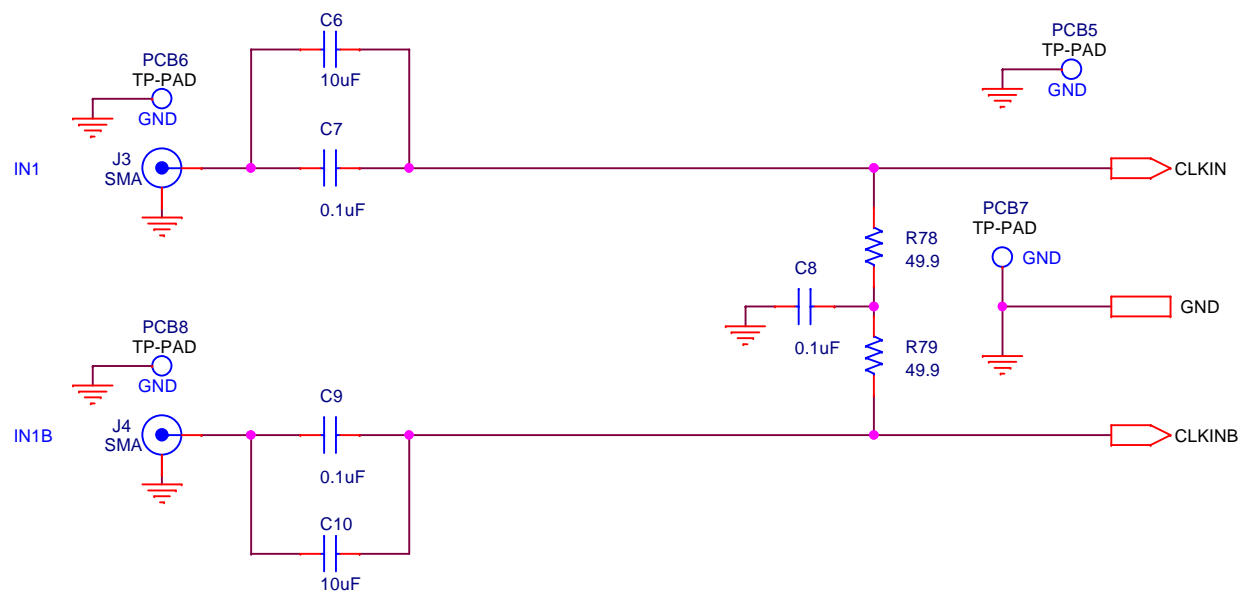
400 W Cesar Chavez
Austin, TX 78701


Title
DIFF_INPUT_CLK

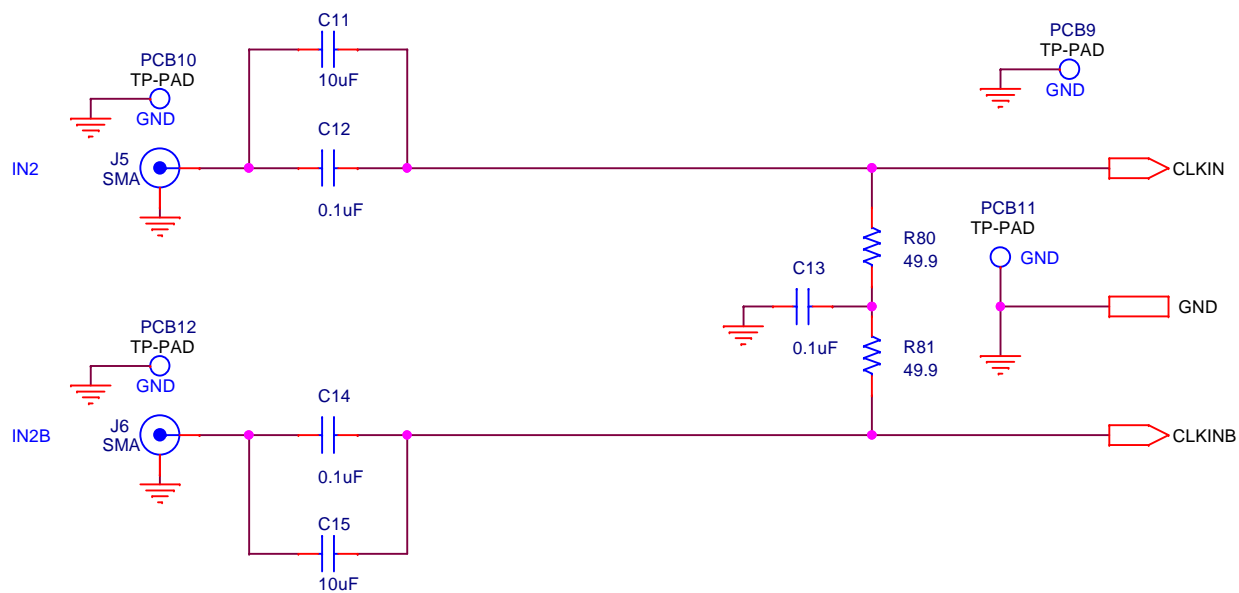
Size A Document Number
SI5381A-E-EB


Rev
1.1

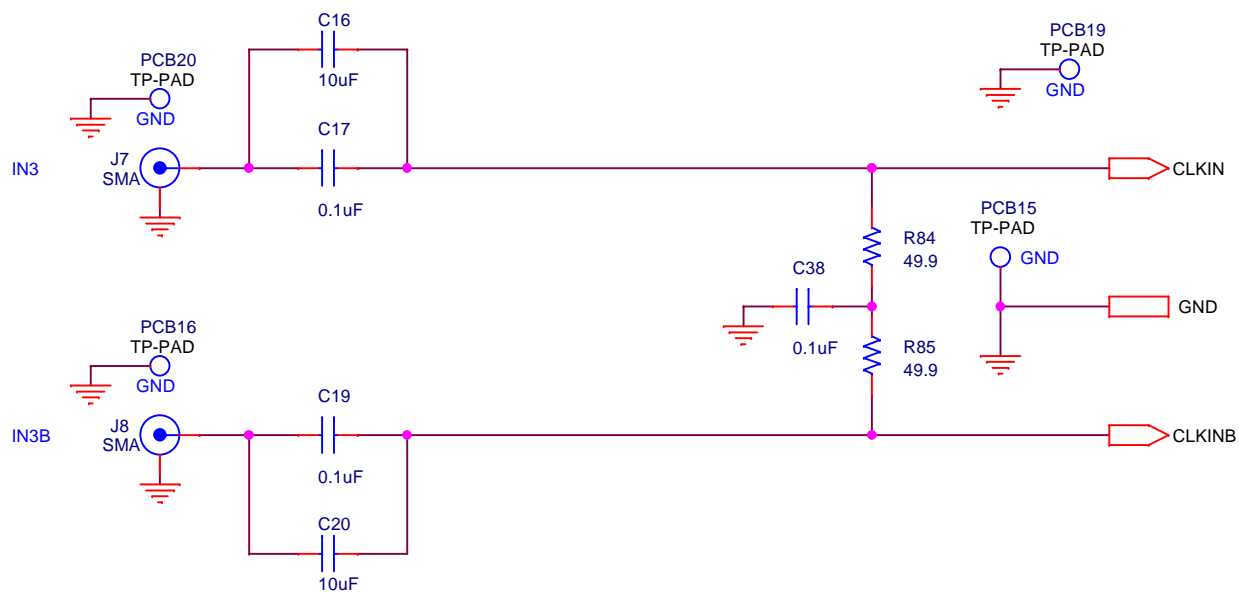
Date: Monday, February 26, 2018 Sheet 5 of 44




 400 W Cesar Chavez Austin, TX 78701		
Title DIFF_INPUT_CLK		
Size A	Document Number SI5381A-E-EB	Rev 1.1
Date:	Monday, February 26, 2018	Sheet 6 of 44

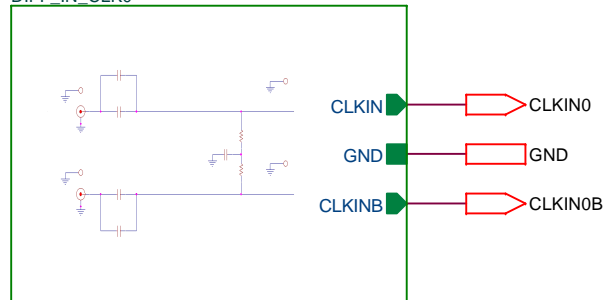


 400 W Cesar Chavez Austin, TX 78701		
Title DIFF_INPUT_CLK		
Size A	Document Number SI5381A-E-EB	Rev 1.1
Date:	Monday, February 26, 2018	Sheet 7 of 44



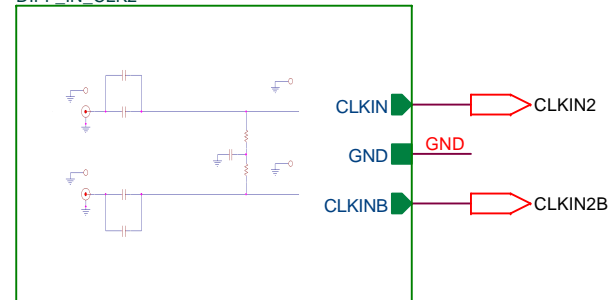
 400 W Cesar Chavez Austin, TX 78701		
Title DIFF_INPUT_CLK		
Size A	Document Number SI5381A-E-EB	Rev 1.1
Date:	Monday, February 26, 2018	Sheet 8 of 44

DIFF_IN_CLK0



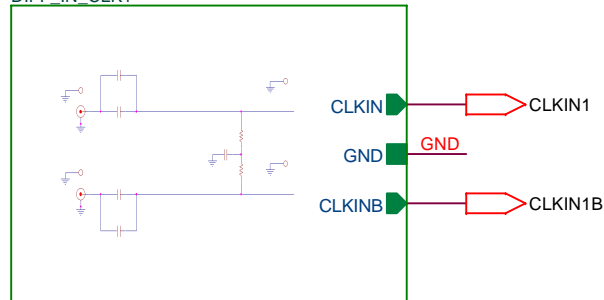
DIFF_INPUT_CLK

DIFF_IN_CLK2



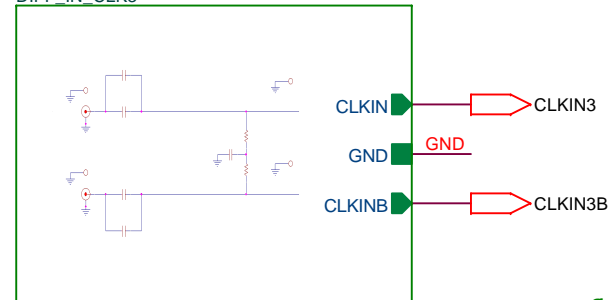
DIFF_INPUT_CLK

DIFF_IN_CLK1

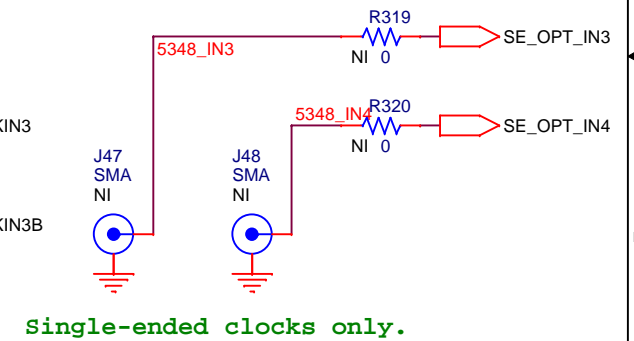



DIFF_INPUT_CLK

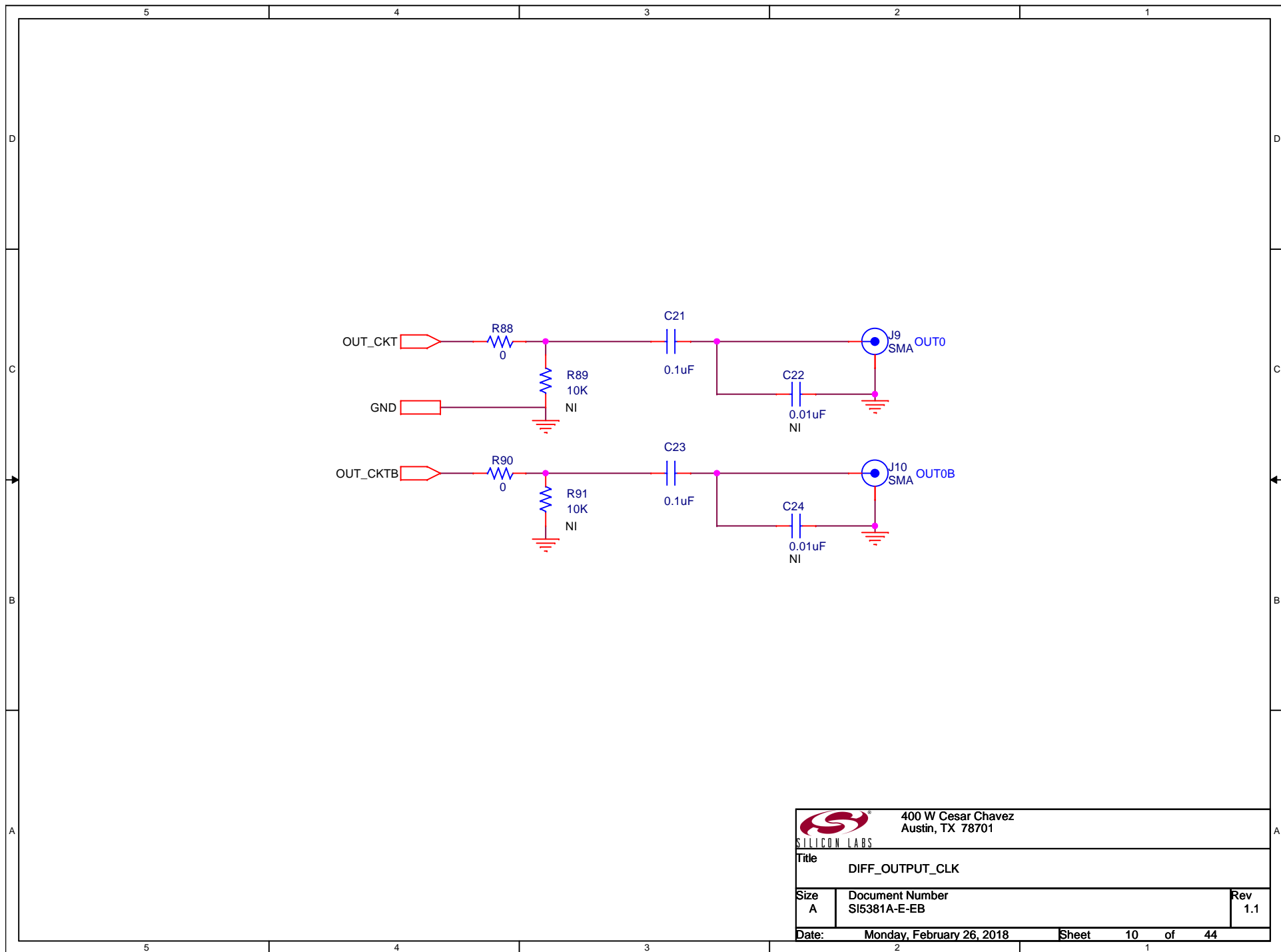
DIFF_IN_CLK3




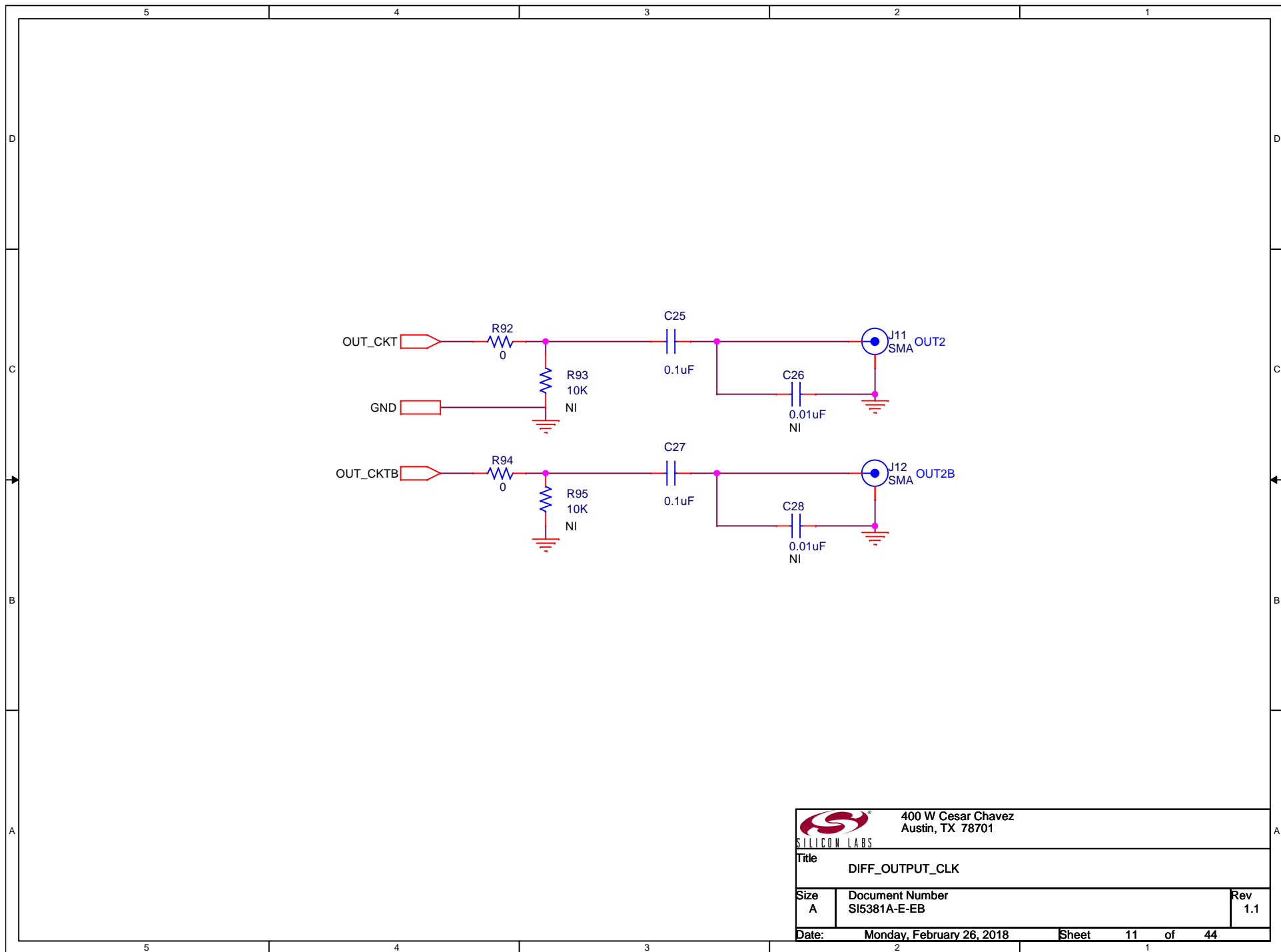
DIFF_INPUT_CLK

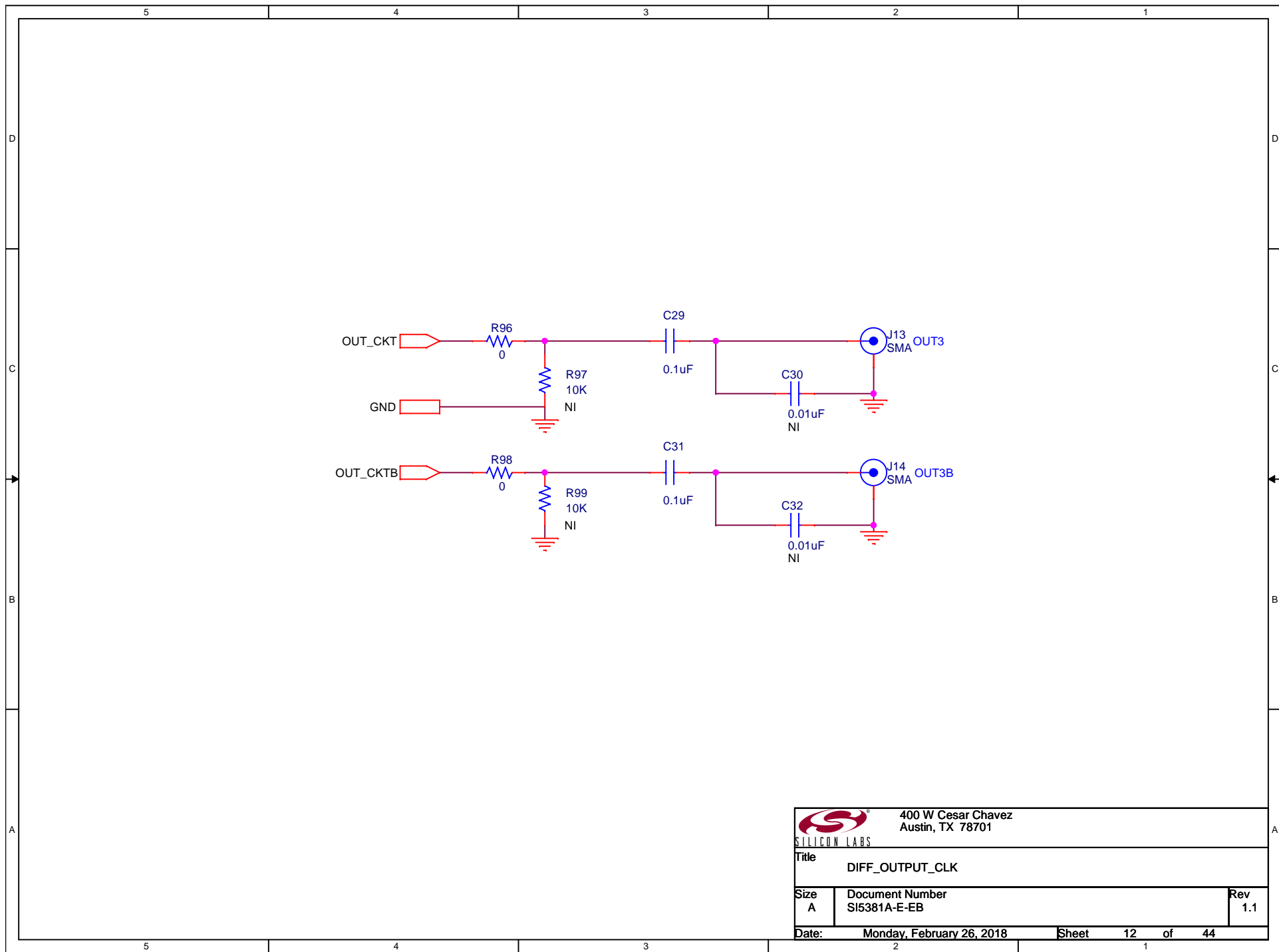


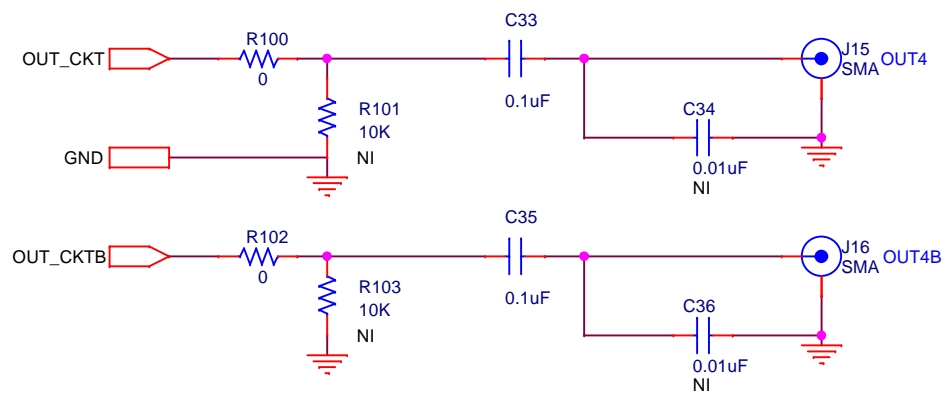
 400 W Cesar Chavez Austin, TX 78701		
Title DIFF_INPUT_CLOCKS_4		
Size A	Document Number SI5381A-E-EB	Rev 1.1
Date:	Monday, February 26, 2018	Sheet 9 of 44




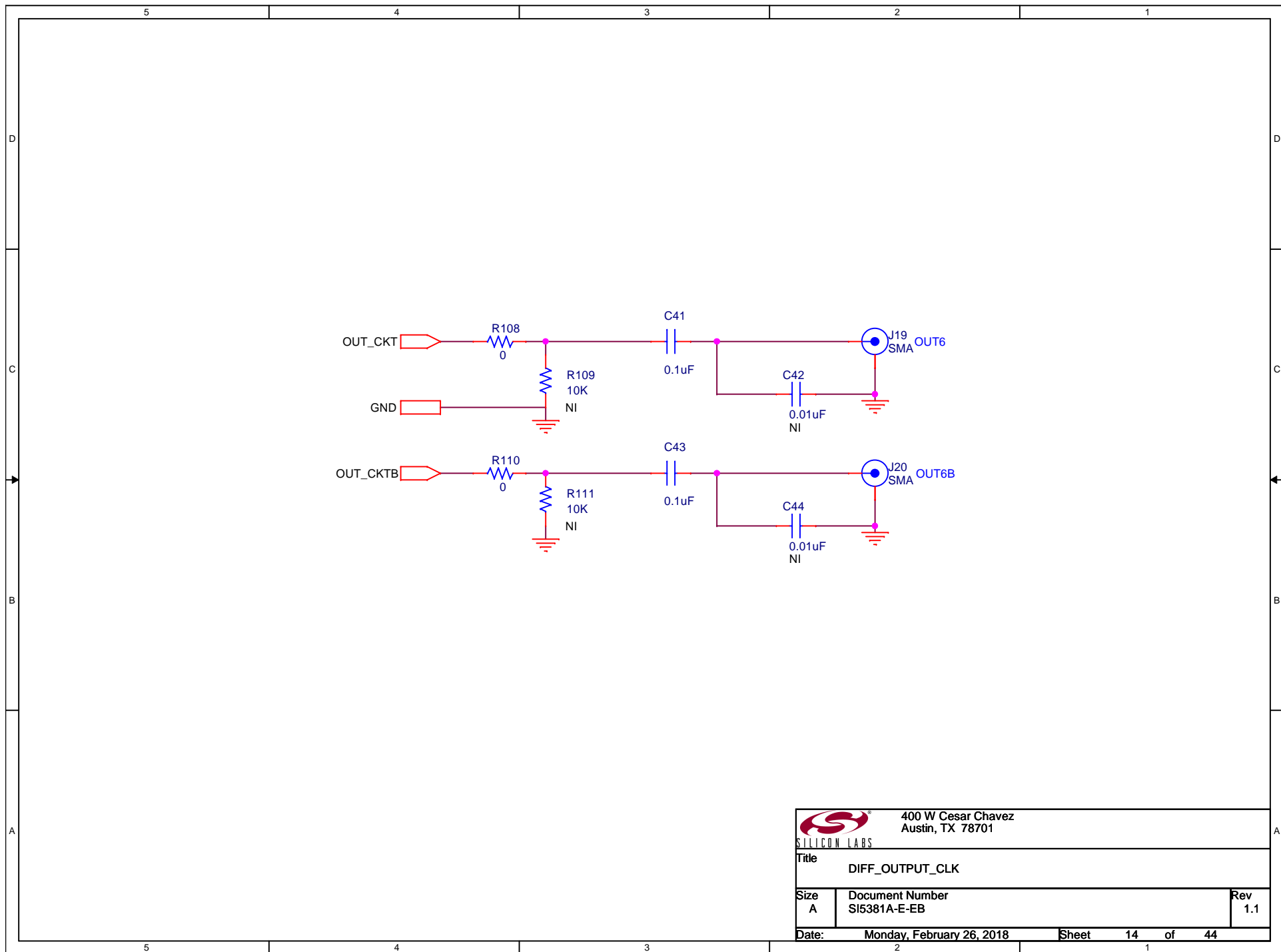
 400 W Cesar Chavez Austin, TX 78701		
Title DIFF_OUTPUT_CLK		
Size A	Document Number SI5381A-E-EB	Rev 1.1
Date:	Monday, February 26, 2018	Sheet 10 of 44

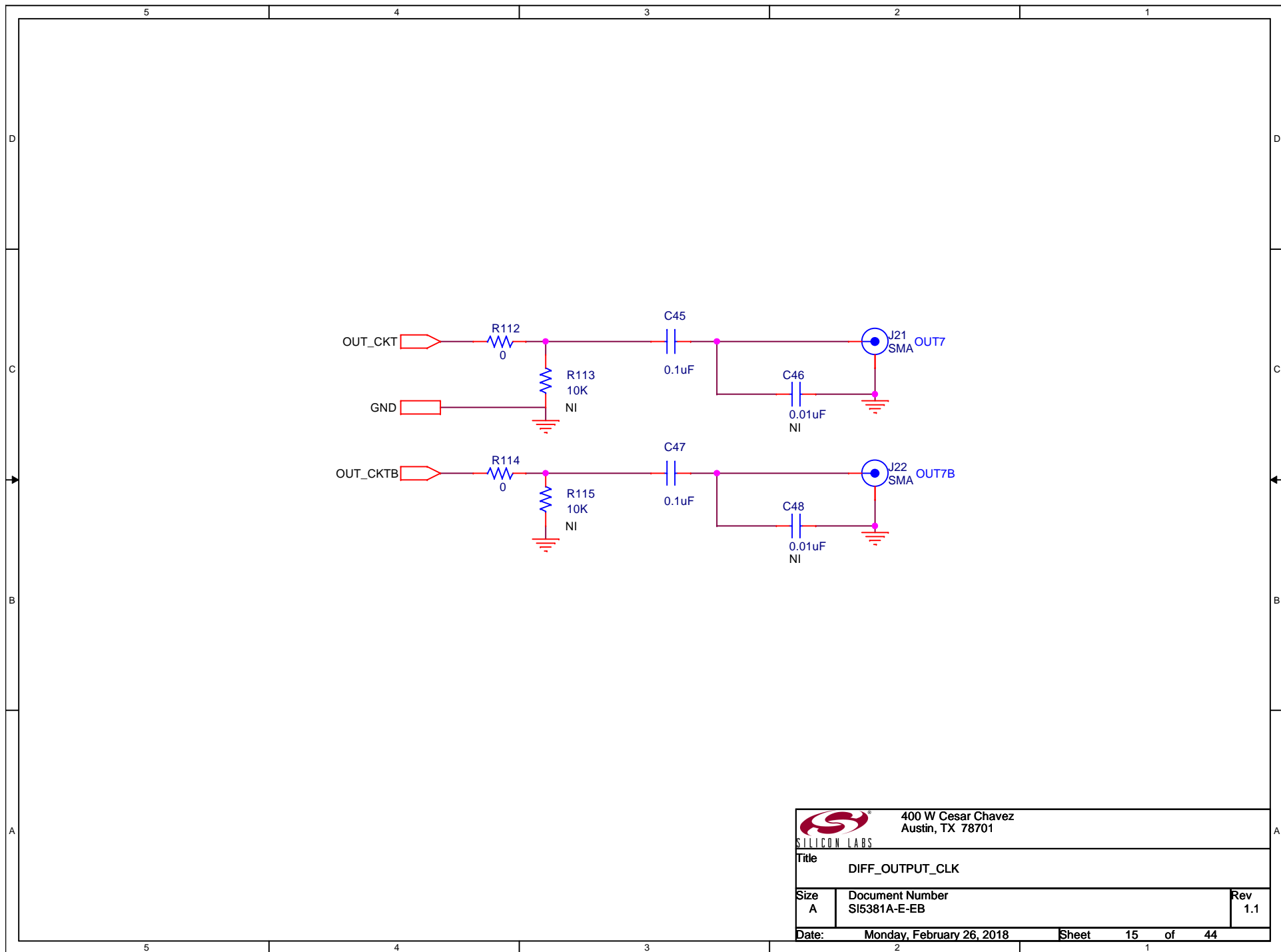


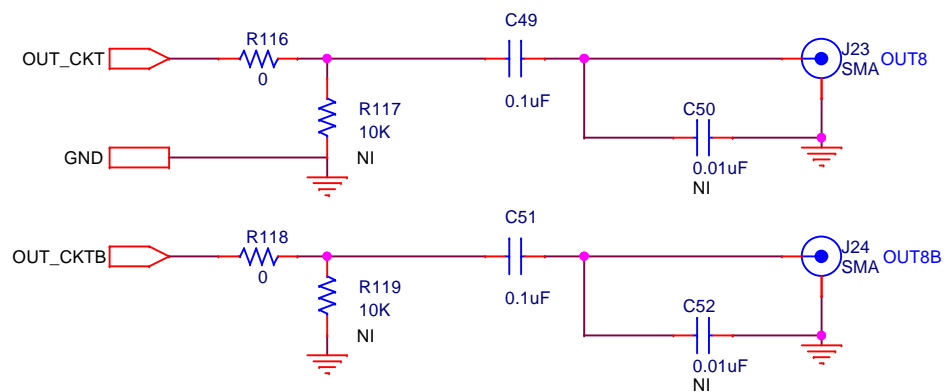





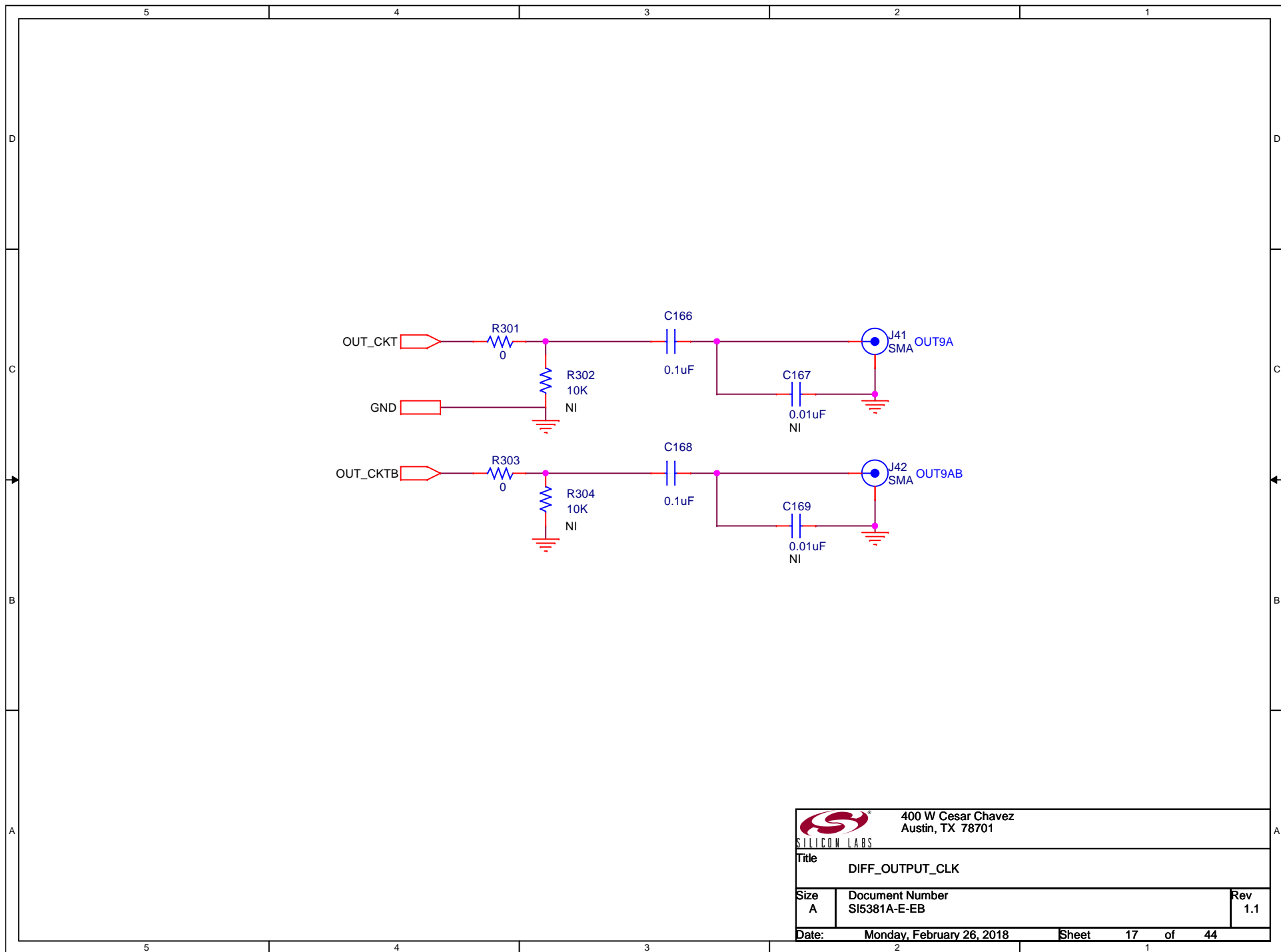
 400 W Cesar Chavez Austin, TX 78701		
Title DIFF_OUTPUT_CLK		
Size A	Document Number SI5381A-E-EB	Rev 1.1
Date:	Monday, February 26, 2018	Sheet 13 of 44



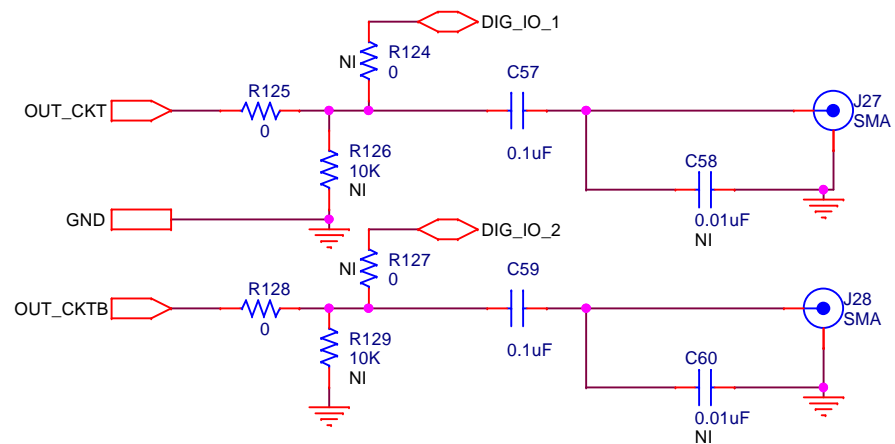




 400 W Cesar Chavez Austin, TX 78701		
Title DIFF_OUTPUT_CLK		
Size A	Document Number SI5381A-E-EB	Rev 1.1
Date:	Monday, February 26, 2018	Sheet 16 of 44



DIFF_OUTPUT_CLK_DIG_IO



400 W Cesar Chavez
Austin, TX 78701

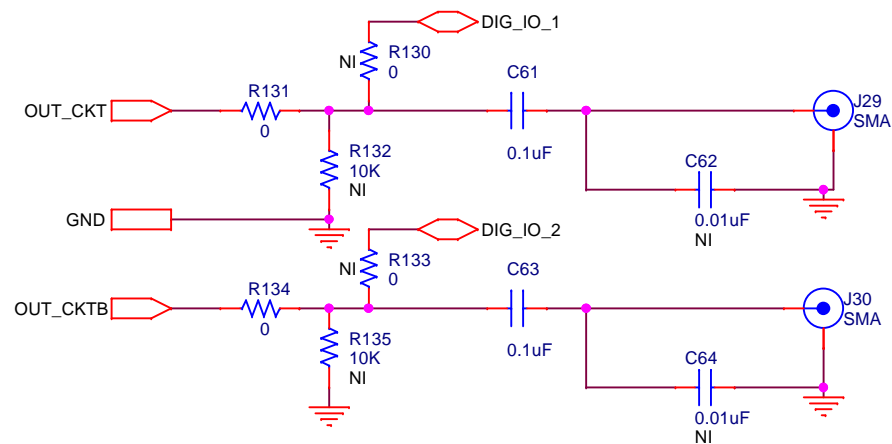
Title
DIFF_OUTPUT_CLK_DIG_IO

Size A Document Number
SI5381A-E-EB

Rev
1.1

Date: Monday, February 26, 2018 Sheet 18 of 44

DIFF_OUTPUT_CLK_DIG_IO



400 W Cesar Chavez
Austin, TX 78701

Title

DIFF_OUTPUT_CLK_DIG_IO

Size
A

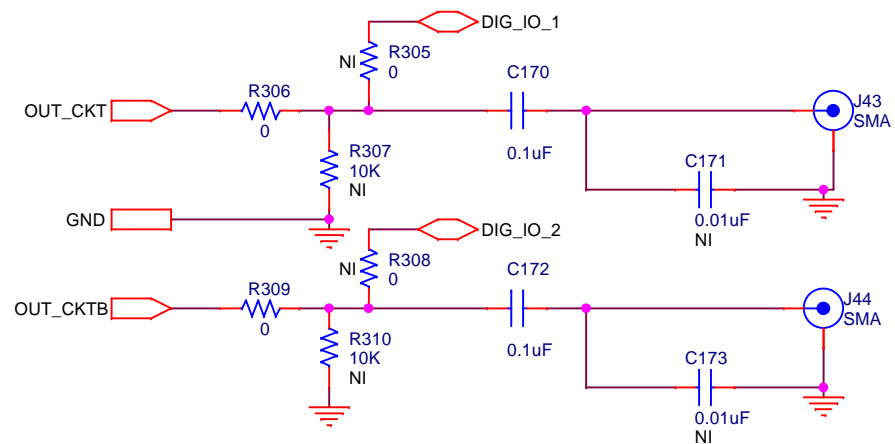
Document Number
SI5381A-E-EB

Rev
1.1

Date: Monday, February 26, 2018

Sheet 19 of 44

DIFF_OUTPUT_CLK_DIG_IO



400 W Cesar Chavez
Austin, TX 78701

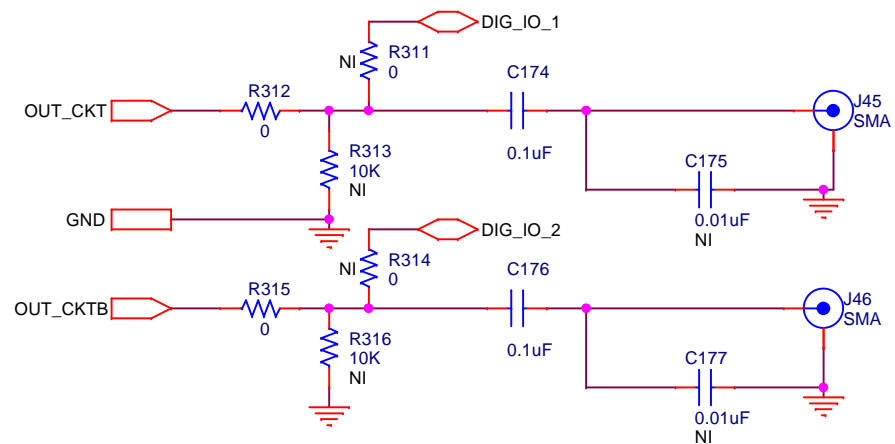
Title
DIFF_OUTPUT_CLK_DIG_IO

Size
A Document Number
SI5381A-E-EB

Rev
1.1

Date: Monday, February 26, 2018 Sheet 20 of 44

DIFF_OUTPUT_CLK_DIG_IO



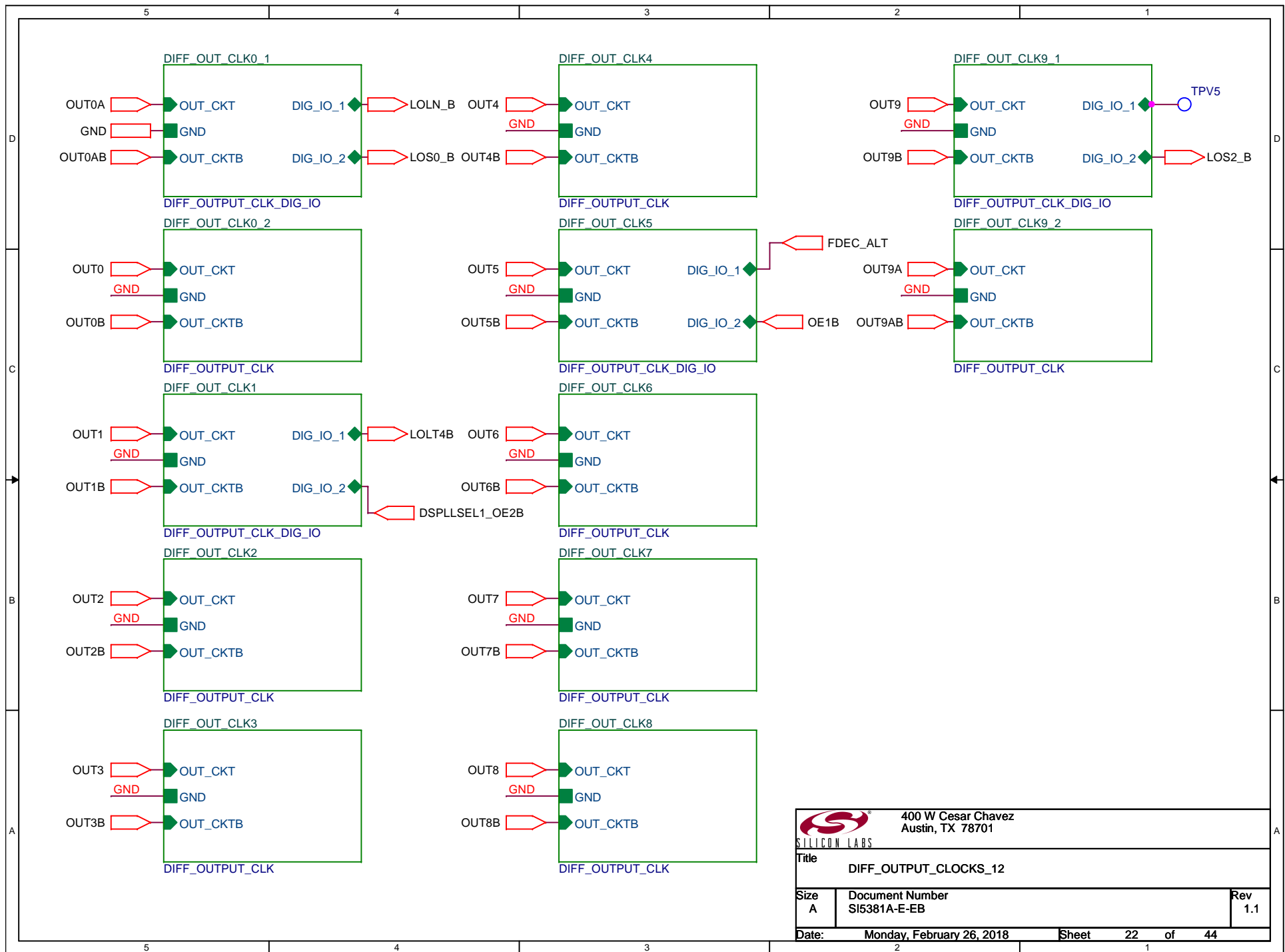
400 W Cesar Chavez
Austin, TX 78701


Title
DIFF_OUTPUT_CLK_DIG_IO

Size A Document Number
SI5381A-E-EB

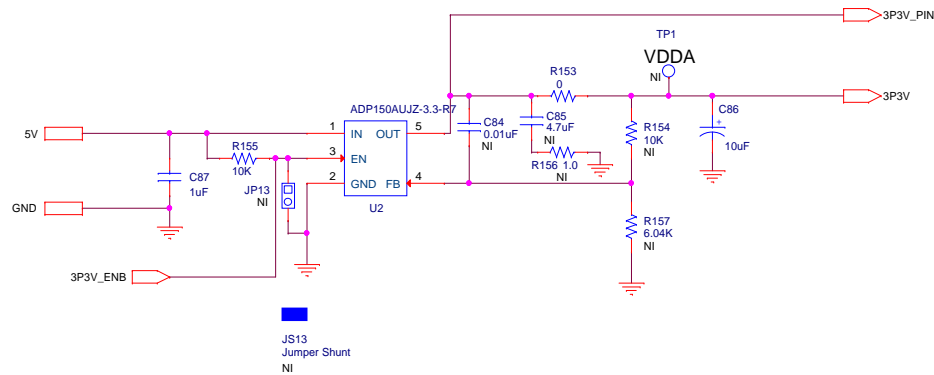
Rev
1.1

Date: Monday, February 26, 2018 Sheet 21 of 44




 400 W Cesar Chavez Austin, TX 78701		
Title DIFF_OUTPUT_CLOCKS_12		
Size A	Document Number SI5381A-E-EB	Rev 1.1
Date:	Monday, February 26, 2018	Sheet 22 of 44

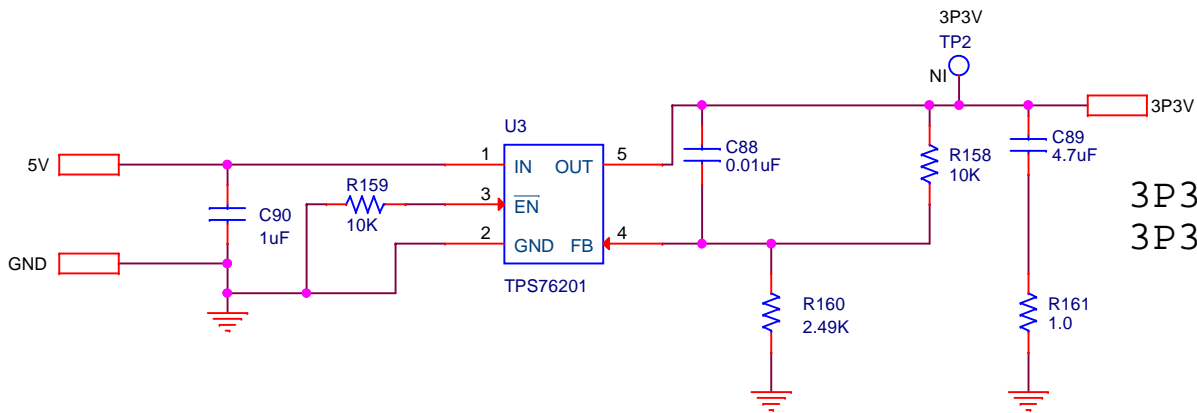
Fixed 3.3V 150 mA Voltage Regulator




3P3V_DUT (In Schematic)
VDDA DUT (Board Silkscreen)

		400 W Cesar Chavez Austin, TX 78701	
Title		VDD_REG_MIC5235	
Size	Document Number	Rev	
B	SI5381A-E-EB	1.1	
Date:	Monday, February 26, 2018	Sheet	23 of 44

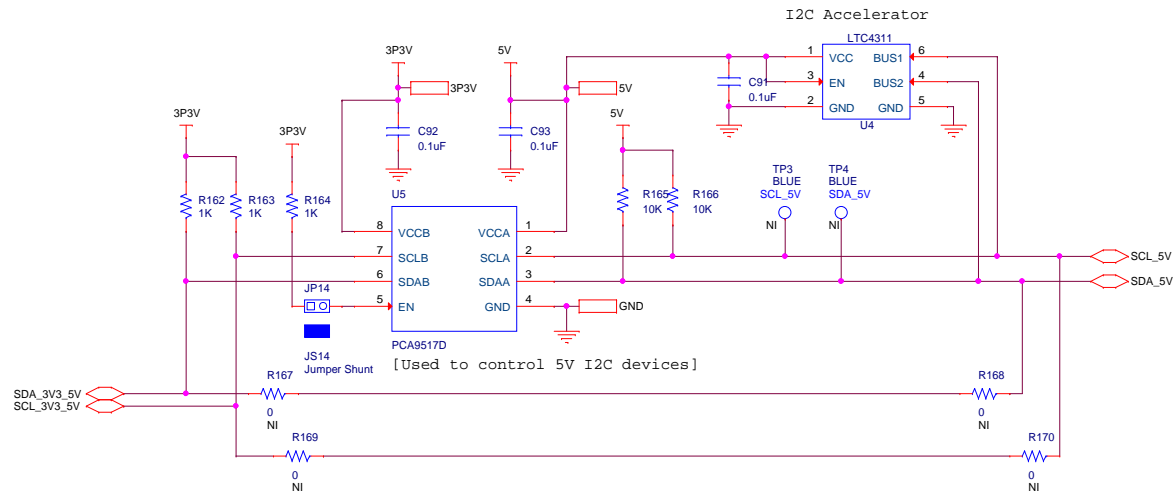
Fixed 3.3V 100 mA Voltage Regulator (Enabled, no current measurement supported.)




3P3V (In Schematic)
3P3V (Board Silkscreen)

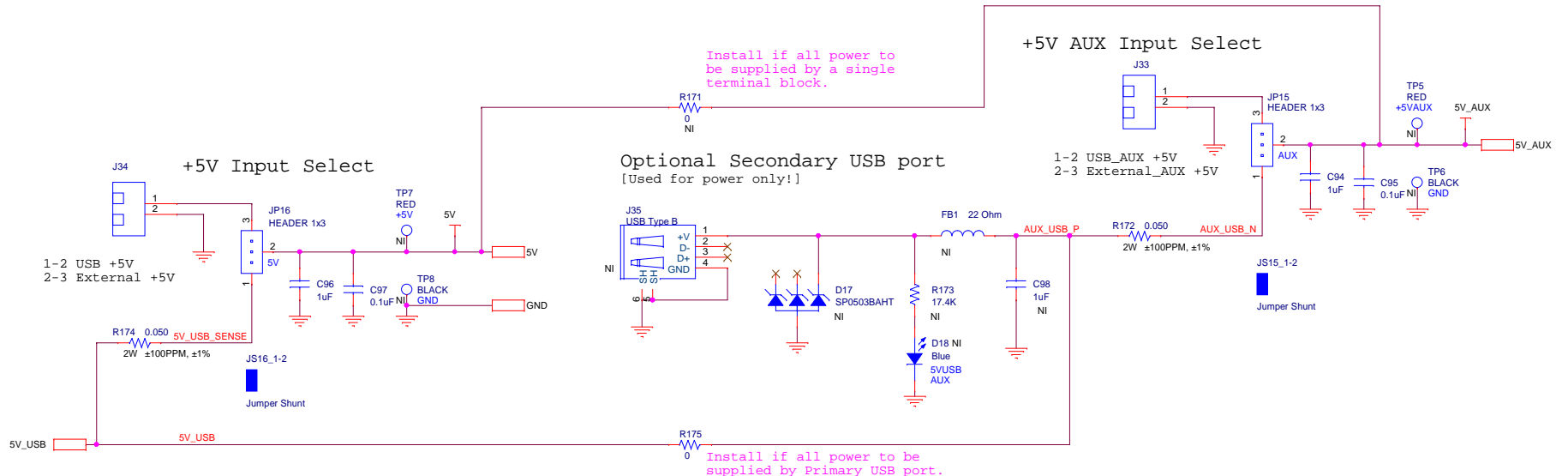
		400 W Cesar Chavez Austin, TX 78701	
Title		FIXED_3V3_REG_TPS76201_EN_NO_IM	
Size A	Document Number SI5381A-E-EB	<Variant Name>	Rev 1.1
Date:	Monday, February 26, 2018	Sheet	24 of 44


I2C LEVEL TRANSLATORS



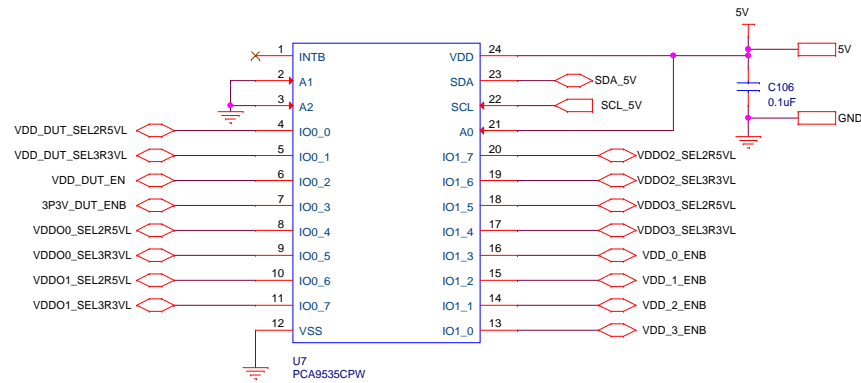
 400 W Cesar Chavez Austin, TX 78701		
Title I2C_TRANSLATORS		
Size B	Document Number SI5381A-E-EB	Rev 1.1
Date: Monday, February 26, 2018	Sheet 25 of 44	

MAIN POWER INPUT SELECTS EXTERNAL OR USB

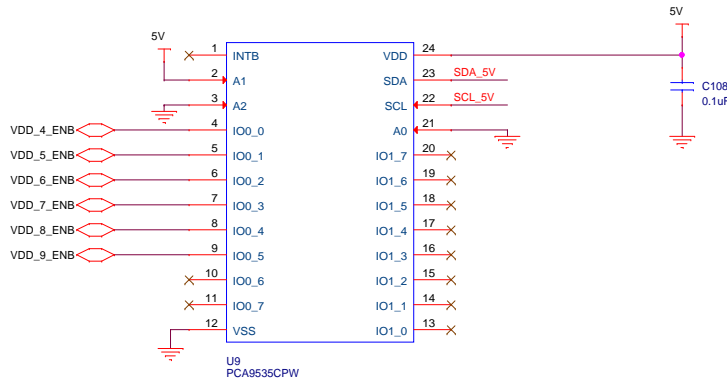


 400 W Cesar Chavez Austin, TX 78701	
Title	
MAIN_POWER_CONNECTIONS	
Size	Document Number
B	SI5381A-E-EB
Date:	Monday, February 26, 2018
Sheet	26 of 44
Rev	1.1

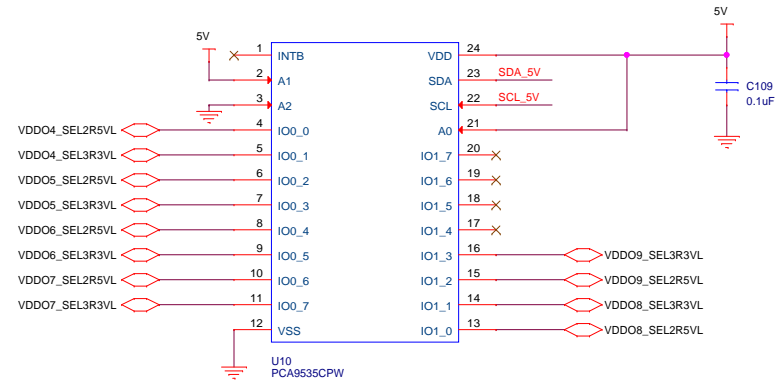
PERIPHERALS



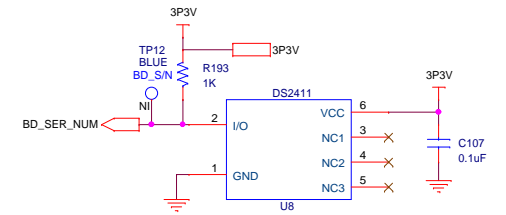
I2C VDD ENABLES/SELECTS FOR REGULATORS
I2C address: 0100001



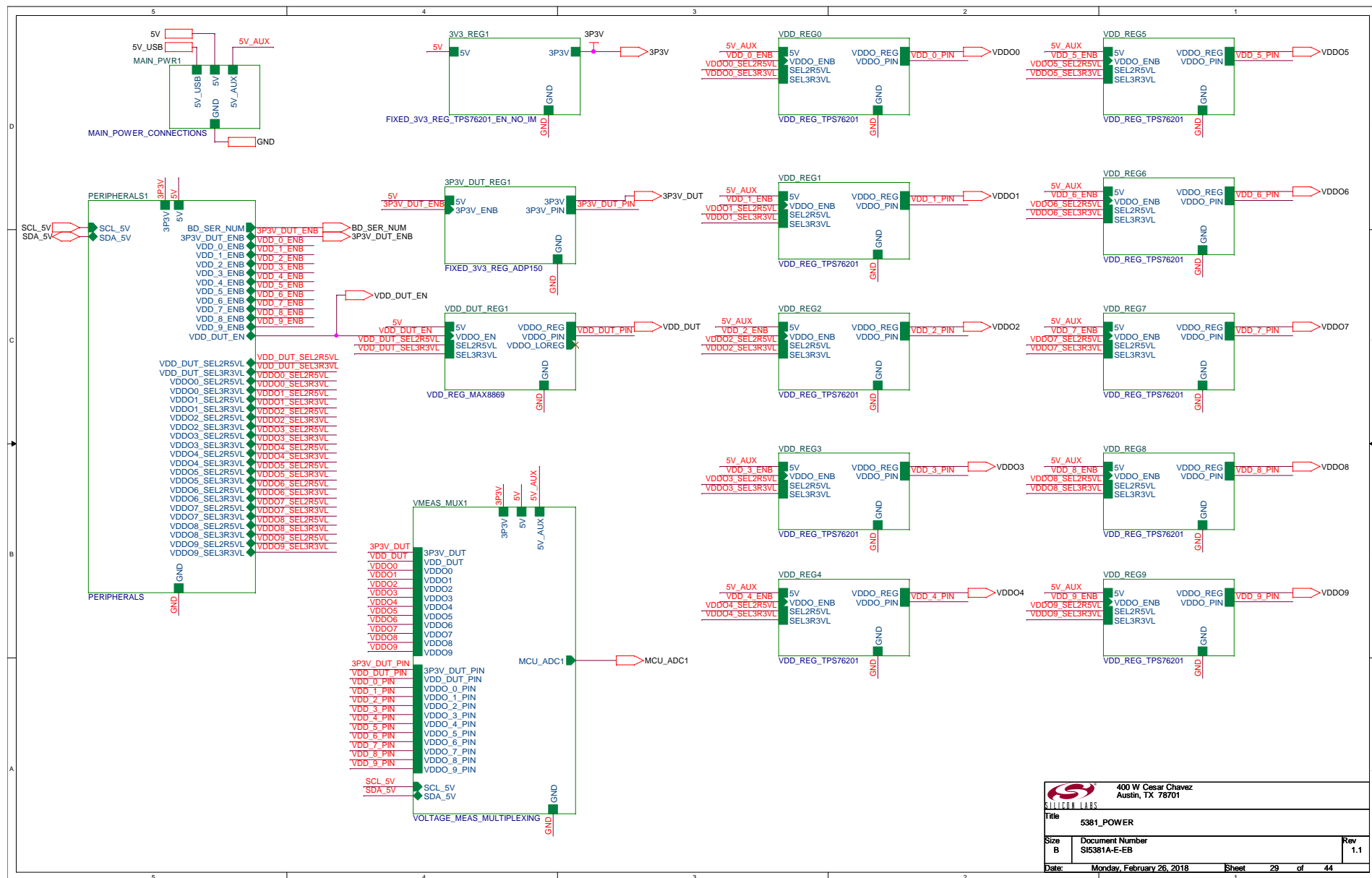
I2C VDD ENABLES/SELECTS FOR REGULATORS
I2C address: 0100010



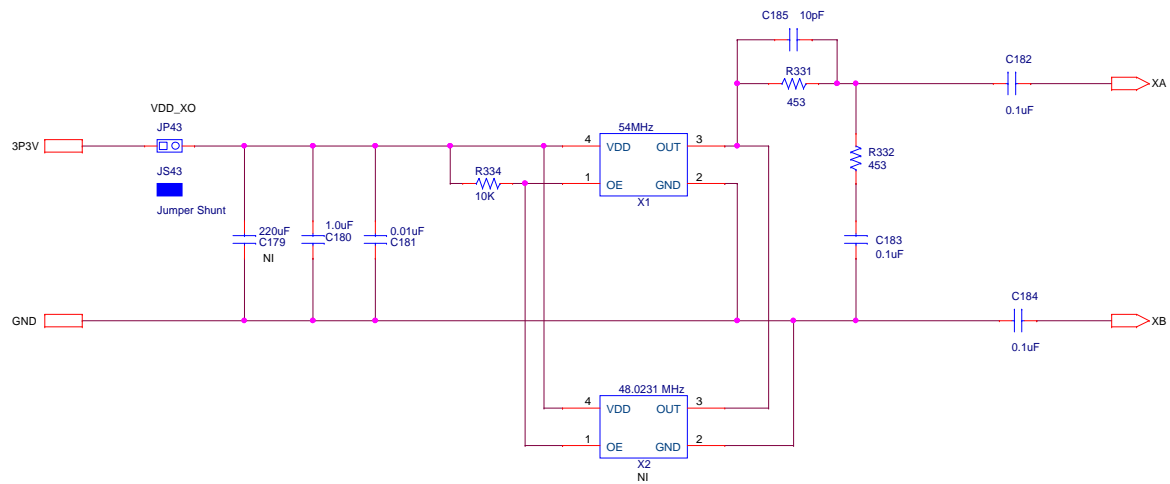
I2C VDD ENABLES/SELECTS FOR REGULATORS
I2C address: 0100011




Board Serial Number

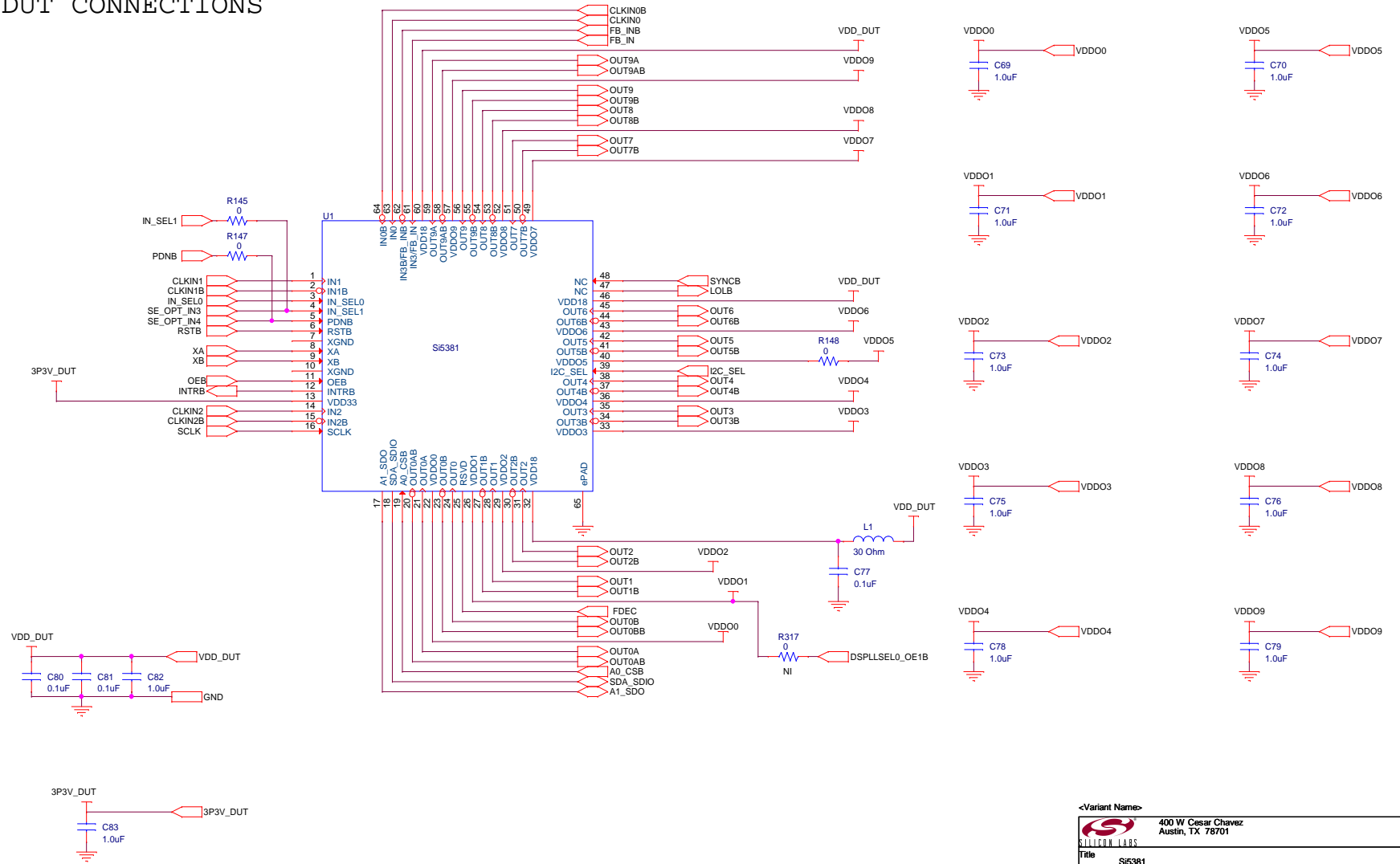



REFERENCE INPUT CONNECTIONS



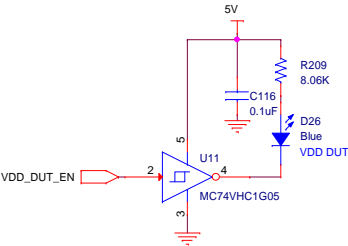
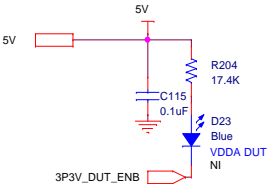
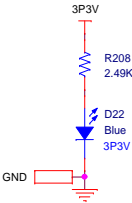
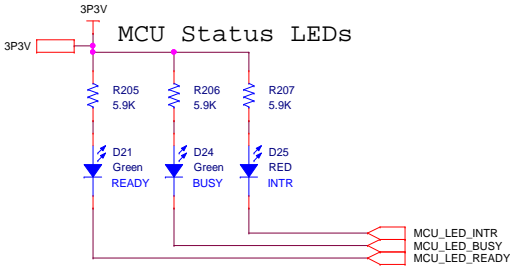
 400 W Cesar Chavez Austin, TX 78701	
Title	
REFERENCE	
Size	Document Number
B	SI5381A-E-EB
Date:	Monday, February 26, 2018
Sheet	30 of 44
Rev	1.1


DUT CONNECTIONS

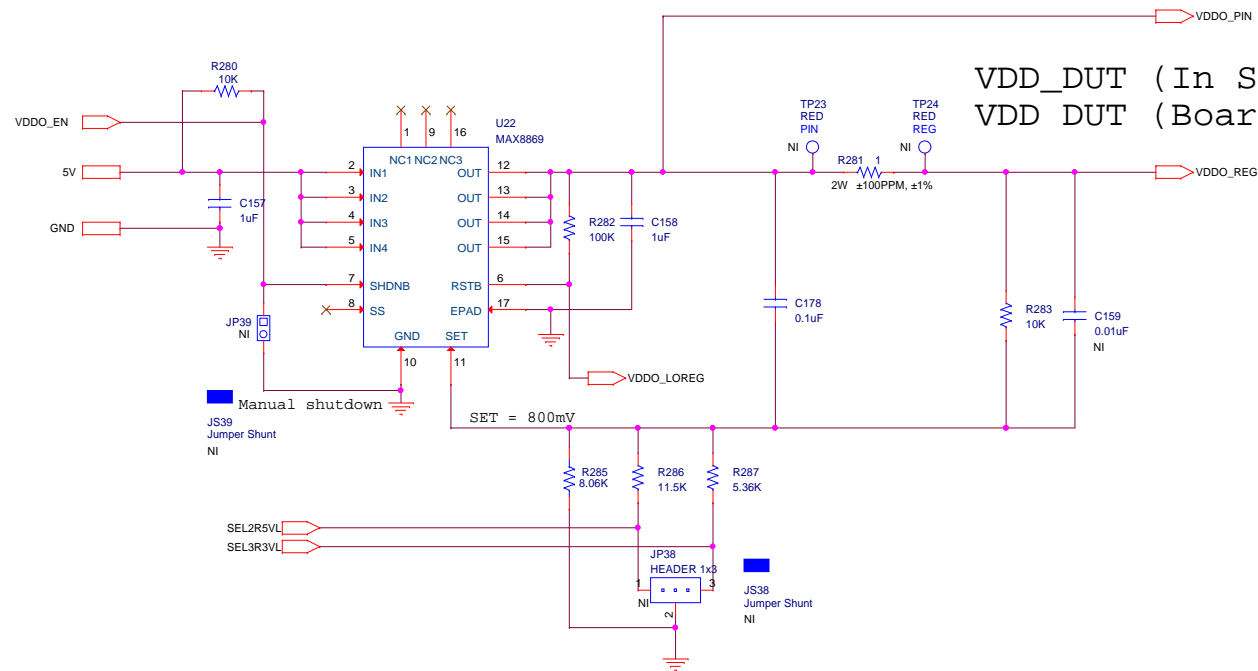


<Variant Name>		
 400 W Cesar Chavez Austin, TX 78701		
Title		
SI5381		
Size	Document Number	Rev
B	SI5381A-E-EB	1.1
Date:	Monday, February 26, 2018	Sheet 31 of 44


LEDS - SUPPLIES & STATUS



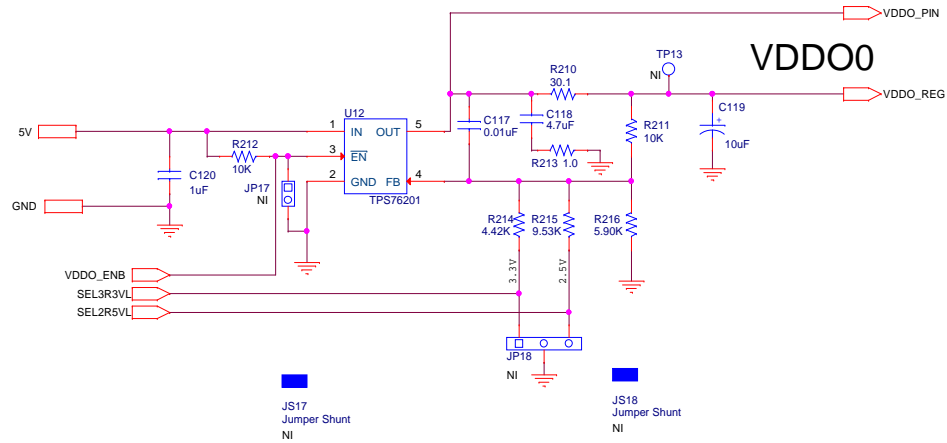
 400 W Cesar Chavez Austin, TX 78701		
Title STATUS_MAIN_SUPPLY_LEDS		
Size B	Document Number SI5381A-E-EB	Rev 1.1
Date: Monday, February 26, 2018 Sheet 32 of 44		




VDD_DUT (In Schematic)
VDD DUT (Board Silkscreen)

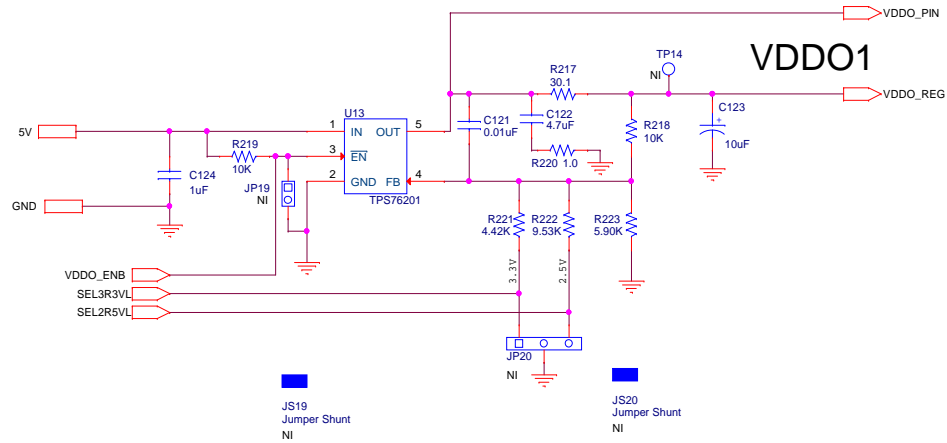
 400 W Cesar Chavez Austin, TX 78701		
Title VDD_REG_MAX8869		
Size B	Document Number SI5381A-E-EB	Rev 1.1
Date: Monday, February 26, 2018	Sheet 33 of 44	


100 mA Adjustable Voltage Regulator



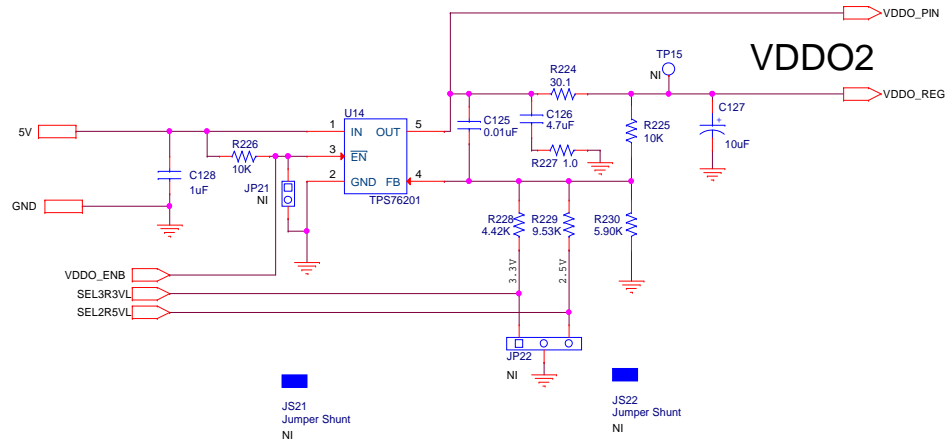
 400 W Cesar Chavez Austin, TX 78701	
Title	
VDD_REG_TPS76201	
Size	Document Number
B	SI5381A-E-EB
Date:	Monday, February 26, 2018
Sheet	34 of 44
Rev	1.1


100 mA Adjustable Voltage Regulator



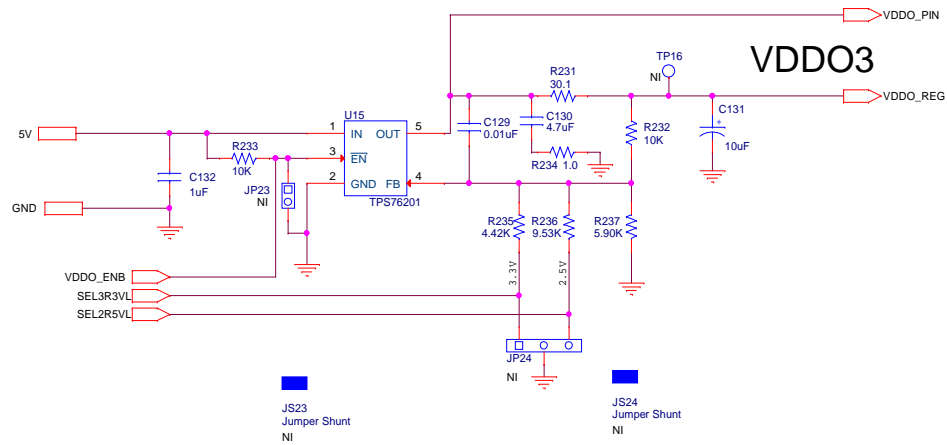
 400 W Cesar Chavez Austin, TX 78701	
Title	
VDD_REG_TPS76201	
Size	Document Number
B	SI5381A-E-EB
Date:	Monday, February 26, 2018
Sheet	35 of 44
Rev	1.1


100 mA Adjustable Voltage Regulator



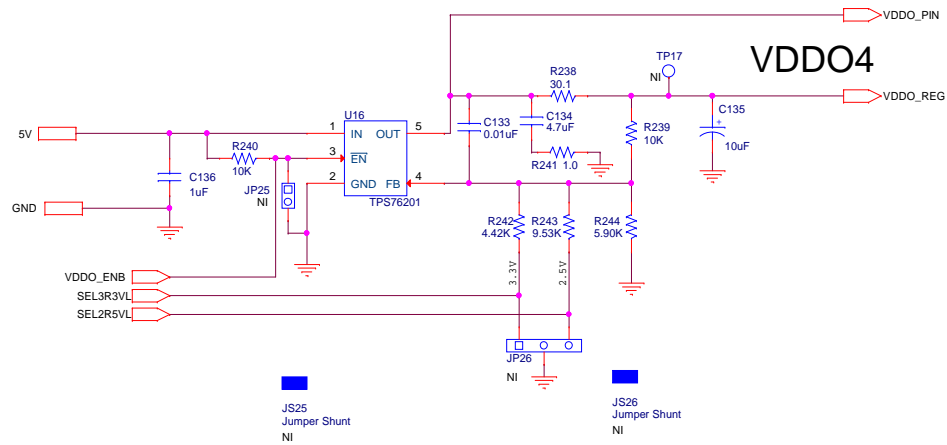
 400 W Cesar Chavez Austin, TX 78701	
Title VDD_REG_TPS76201	
Size B	Document Number SI5381A-E-EB
Date: Monday, February 26, 2018	Sheet 36 of 44
Rev 1.1	


100 mA Adjustable Voltage Regulator



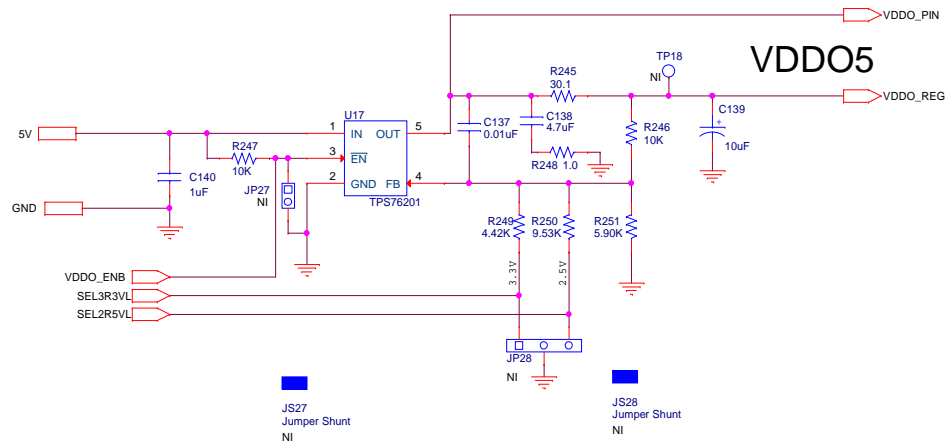
 400 W Cesar Chavez Austin, TX 78701	
Title	
VDD_REG_TPS76201	
Size	Document Number
B	SI5381A-E-EB
Date:	Monday, February 26, 2018
Sheet	37 of 44
Rev	1.1


100 mA Adjustable Voltage Regulator



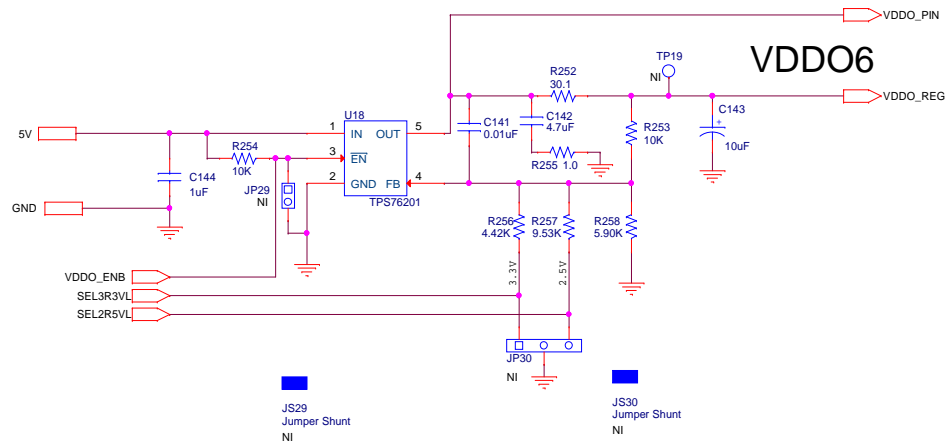
 400 W Cesar Chavez Austin, TX 78701	
Title	
VDD_REG_TPS76201	
Size	Document Number
B	SI5381A-E-EB
Date:	Monday, February 26, 2018
Sheet	38 of 44
Rev	1.1


100 mA Adjustable Voltage Regulator



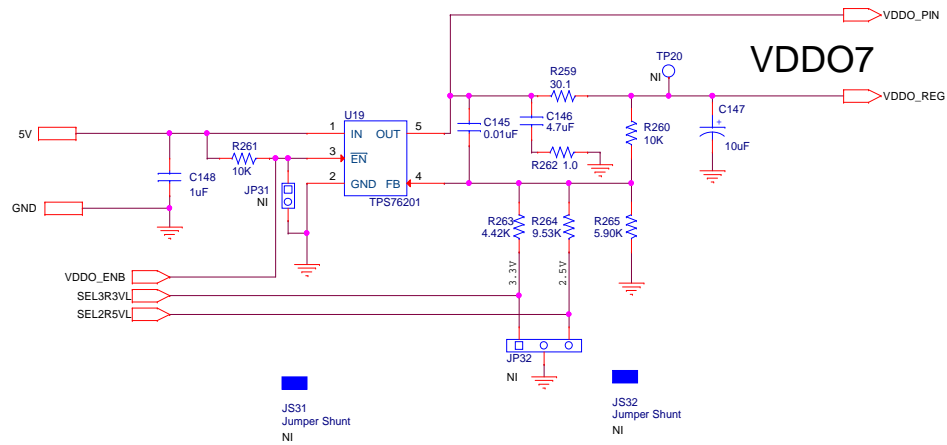
 400 W Cesar Chavez Austin, TX 78701	
Title	
VDD_REG_TPS76201	
Size	Document Number
B	SI5381A-E-EB
Date:	Monday, February 26, 2018
Sheet	39 of 44
Rev	1.1


100 mA Adjustable Voltage Regulator



 400 W Cesar Chavez Austin, TX 78701	
Title	
VDD_REG_TPS76201	
Size	Document Number
B	SI5381A-E-EB
Date:	Monday, February 26, 2018
Sheet	40 of 44
Rev	1.1

100 mA Adjustable Voltage Regulator



 400 W Cesar Chavez Austin, TX 78701	
Title	
VDD_REG_TPS76201	
Size	Document Number
B	SI5381A-E-EB
Date:	Monday, February 26, 2018
Sheet	41 of 44
Rev	1.1

100 mA Adjustable Voltage Regulator

The circuit schematic shows a 100 mA Adjustable Voltage Regulator using the TPS76201. The input is 5V, and the output is regulated to 1.0V. The circuit includes a 10k resistor (R268), a 1uF capacitor (C152), and a 10k resistor (R267) connected to the EN pin. The output is regulated to 1.0V (R269) and 1.0V (R271). The output is connected to VDDO_PIN and VDDO_REG. The circuit also includes a 3.3V and 2.5V output section with resistors R270, R271, and R272, and a 10uF capacitor (C151).

Size	Document Number	Rev
B	SI5381A-E-EB	1.1

Date: Monday, February 26, 2018 Sheet 42 of 44

D




JS35
Jumper Shunt
NI

JS36
Jumper Shunt
NI

α

1

VDDO9

		400 W Cesar Chavez Austin, TX 78701	
Title VDD_REG_TPS76201			
Size B	Document Number SI5381A-E-EB		Rev 1.1
Date: Monday, February 26, 2018		Sheet 43 of 44	

VOLTAGE MEASUREMENT MULTIPLEXING

