

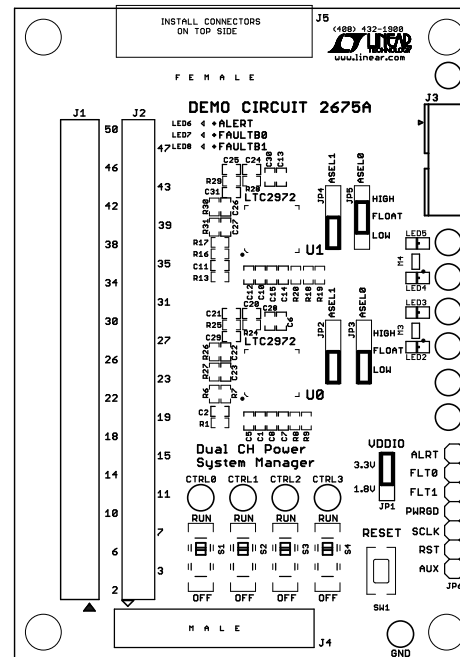
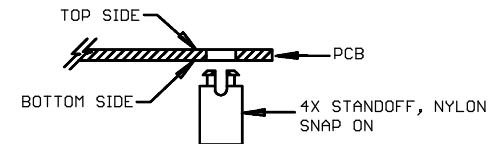
# REVISION HISTORY

ECO	REV	DESCRIPTION	APPROVED	DATE
-	1	PRODUCTION	MIKE P.	01/12/2018

## NOTES: UNLESS OTHERWISE SPECIFIED

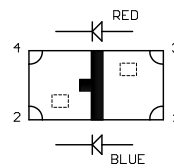
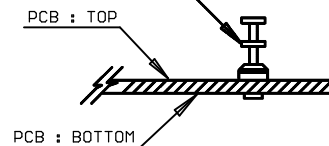
1. WORKMANSHIP SHALL BE IN ACCORDANCE WITH IPC-A-610.
2. PARTS TO OMIT WILL BE SPECIFIED ON THE BILL OF MATERIALS. MASK THE SOLDER STENCIL WHERE SMT PARTS ARE OMITTED.
3. DEPANELIZE BOARDS AFTER ASSEMBLY AND ROUTE-OUT THE BREAKOUT TABS ON 4 SIDES OF THE BOARD EDGE.
4. ASSY PROCESS SHALL INCLUDE: REFLOW SOLDER TOP SIDE SMD.
5. DO NOT APPLY ANY KIND OF ASSEMBLY STAMP OR QA STAMP ON ANY BOARD.

6. INSTALL 4 STANDOFFS AT 4 CORNERS FROM THE BOTTOM SIDE.




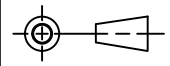
7. INSTALL TURRETS and LEDs AS SHOWN BELOW:

TURRETS : MILL-MAX

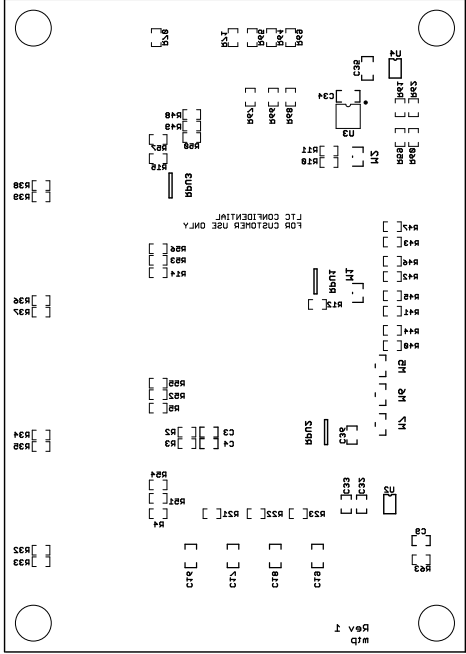




8. INSTALL SHUNTS AS SHOWN WITH THIS SYMBOL



<small>UNLESS OTHERWISE SPECIFIED DIMENSIONS ARE IN INCHES TOLERANCES ON ANGLE +/- 1° 0.XXX" = +/- 0.01" 0.XXX" = +/- 0.005" INTERPRET DIM AND TOL PER ASME Y14.5M-1994</small>	APPROVALS			 <small>1630 MCCARTHY BLVD. MILPITAS, CA 95033 PH: (408) 432-1988 LTC CONFIDENTIAL FOR CUSTOMER USE ONLY</small>
	NAME	DATE		
	PCB DES. MIKE P.	1-12-18		
	ENG. MIKE P.	1-12-18		
THIRD ANGLE PROJECTION				<b>TITLE: TOP ASSEMBLY DRAWING</b> <b>LTC2972UJF 2-CHANNEL</b> <b>POWER SYSTEM MANAGER</b>
				
DO NOT SCALE DRAWING	SCALE: NONE			<small>SIZE</small> N/A <small>IC NO.</small> LTC2972 <small>DEMO CIRCUIT</small> 2675A <small>REV</small> 1
FILENAME: DC2675A_Rev1			SHEET 1 OF 13	

ECO	REV	DESCRIPTION	APPROVED	DATE
-	1	PRODUCTION	MIKE P.	01/12/2018

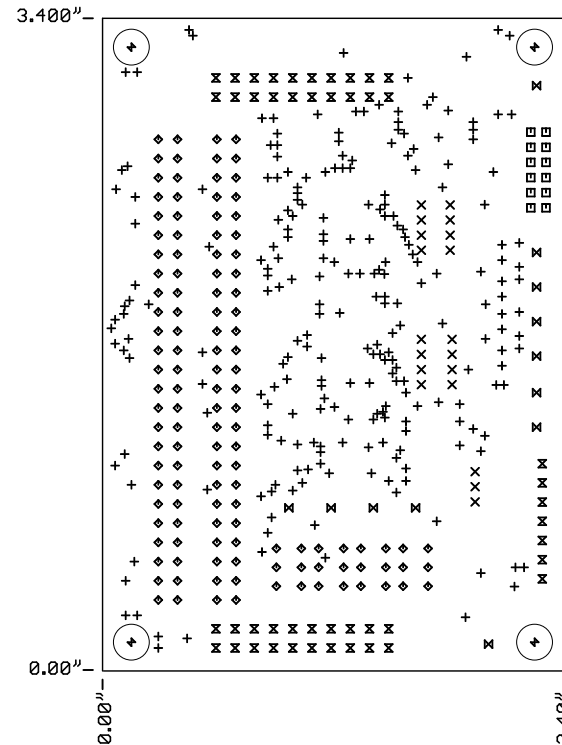


UNLESS OTHERWISE SPECIFIED DIMENSIONS ARE IN INCHES TOLERANCES ON ANGLE +/- 1° 0.XX" = +/- 0.01" 0.XXX" = +/- 0.005" INTERPRET DIM AND TOL PER ASME Y14.5M-1994	APPROVALS			1638 MCCARTHY BLVD. MILPITAS, CA 95033 PH (408) 432-1980 LTC CONFIDENTIAL FOR CUSTOMER USE ONLY		
		NAME				DATE
	PCB DES.	MIKE P.				4-12-18
	ENG	MIKE P.				4-12-18
THIRD ANGLE PROJECTION				TITLE: BOTTOM ASSEMBLY DRAWING LTC2972UJF 2-CHANNEL POWER SYSTEM MANAGER		
				SIZE N/A	IC NO. LTC2972 DEMO CIRCUIT 2675A	REV 1
DO NOT SCALE DIMENSIONS	SCALE: NONE		FILE NAME: P22375A.DWG	SHEET 2 OF 2		

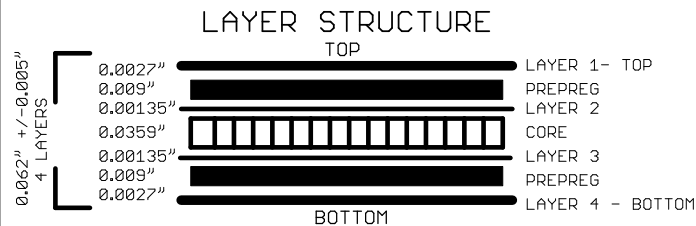
# NOTES: UNLESS OTHERWISE SPECIFIED



1. FAB PER IPC-A-600.
2. MATERIAL: EPOXY FIBERGLASS, NEMA GRADE FR-4  
FINISHED THICKNESS TO BE 0.062" +/-0.005"  
4-LAYER BOARD, 2 OZ. CU ON OUTER LAYERS,  
1 OZ. CU ON INNER LAYERS,  
FLAMMABILITY RATING: 94 V-2 MINIMUM.
3. SIZE: CUT TO DIMENSIONS AND TOLERANCES SHOWN.  
0.00" ARE PRIMARY DATUMS.
4. FINISH: SMOBC USING LPI BOTH SIDES, COLOR BLACK.  
ENIG FINISH. LEAD FREE SOLDER CAN BE USED  
FOR PROTOTYPE BOARDS.  
HIGH DEFINITION WHITE SILKSCREEN.

5. DRILL: PLATE THRU ALL HOLES WITH COPPER, 0.001"  
THICK MIN. ALL HOLES SHALL BE DRILLED  
+/-0.003" WITH RESPECT TO CTR. OF DRILLED  
PAD. ALL HOLES FINISHED SIZE AFTER PLATING.
6. DO NOT ALTER ARTWORK e.g. TO ADD LOGO OR DATE CODE.  
PAD SIZE CAN BE MODIFIED TO MEET END FINISH.
7. PCBs ARE TO BE RoHS COMPLIANT.
8. SCORING FOR PANELIZED PCB:



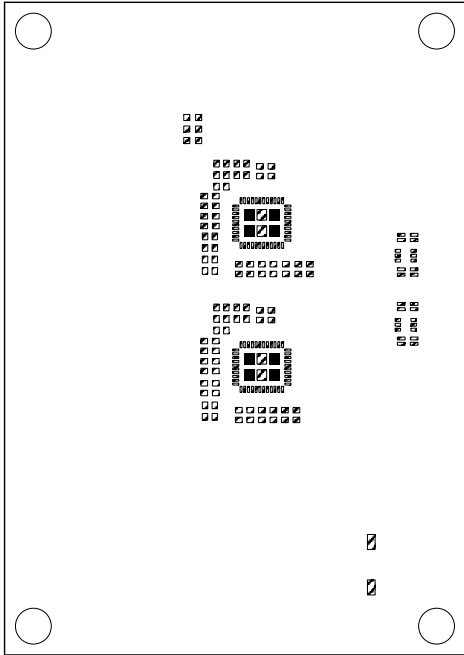
DRILL TABLE						
Sym	Nº	Mils	MM	Qty	Plated	
+	1	10	0.25	242	YES	
x	2	31	0.80	19	YES	
□	3	34	0.86	12	YES	
◇	4	35	0.90	124	YES	
z	5	40	1.02	47	YES	
⊞	6	64	1.63	12	YES	
+	7	187	4.75	4	NOT	




UNLESS OTHERWISE SPECIFIED DIMENSIONS ARE IN INCHES TOLERANCES ON ANGLE +/- 1° 0.XXX" = +/- 0.01" 0.XXX" = +/- 0.005" INTERPRET DIM AND TOL PER ASME Y14.5M-1994	APPROVALS			 1630 MCCARTHY BLVD. MILPITAS, CA 95033 PH: (408) 432-1988 LTC CONFIDENTIAL FOR CUSTOMER USE ONLY	
		NAME	DATE		
	PCB DES.	MIKE P.	1-12-18		
	ENG	MIKE P.	1-12-18		
THIRD ANGLE PROJECTION					TITLE: FABRICATION DRAWING LTC2972UJF 2-CHANNEL POWER SYSTEM MANAGER
					
DO NOT SCALE DRAWING	SCALE: NONE	SIZE	IC NO.	LTC2972 DEMO CIRCUIT 2675A	REV 1
		FILENAME: DC2675A_Rev1			SHEET 3 OF 13

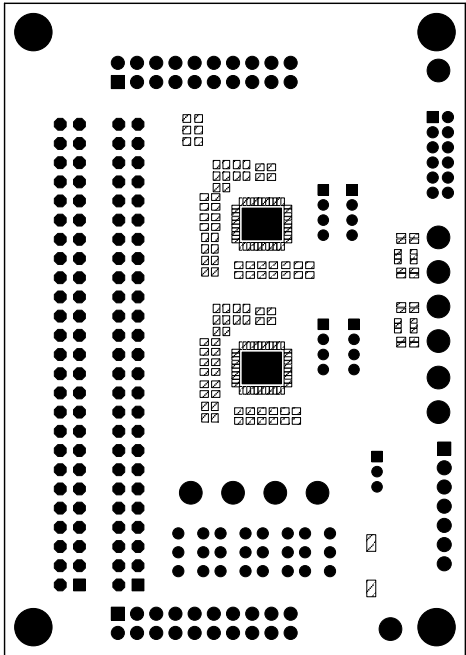



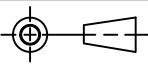
REVISION HISTORY				
ECO	REV	DESCRIPTION	APPROVED	DATE
-	1	PRODUCTION	MIKE P.	01/12/2018



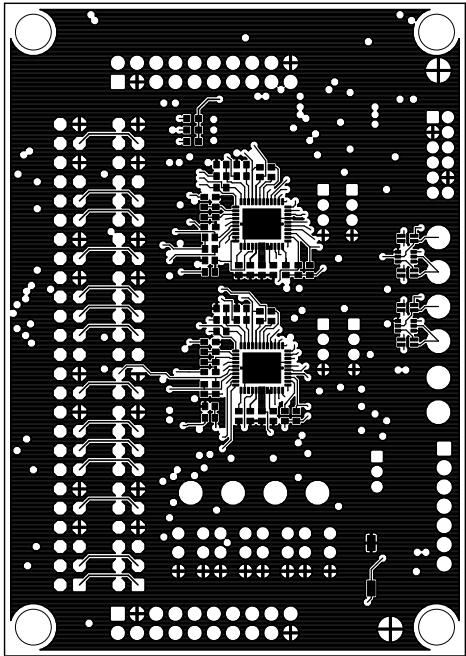
UNLESS OTHERWISE SPECIFIED DIMENSIONS ARE IN INCHES TOLERANCES ON ANGLE +/- 1° 0.XX" = +/- 0.01" 0.XXX" = +/- 0.005" INTERPRET DIM AND TOL PER ASME Y14.5M-1994		<b>APPROVALS</b>		 1630 MCCARTHY BLVD. MILPITAS, CA 95033 PH: (408) 432-1900 LTC CONFIDENTIAL FOR CUSTOMER USE ONLY	
		NAME	DATE		
PCB DES.	MIKE P.	1-12-18			
ENG	MIKE P.	1-12-18			
TITLE: TOP PASTE					
LTC2972UJF 2-CHANNEL					
POWER SYSTEM MANAGER					
SIZE			IC NO.	LTC2972	REV
N/A			DEMO CIRCUIT	2675A	1
DO NOT SCALE DRAWING			SCALE: NONE		FILENAME: DC2675A_Rev1
					SHEET 5 OF 13



REVISION HISTORY				
ECO	REV	DESCRIPTION	APPROVED	DATE
-	1	PRODUCTION	MIKE P.	01/12/2018



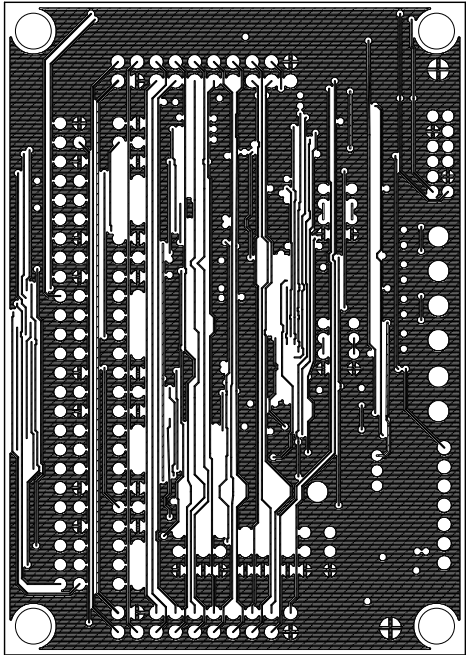
<small>UNLESS OTHERWISE SPECIFIED DIMENSIONS ARE IN INCHES TOLERANCES ON ANGLE +/- 1° 0.XX" = +/- 0.01" 0.XXX" = +/- 0.005" INTERPRET DIM AND TOL PER ASME Y14.5M-1994</small>	APPROVALS			 <small>1630 MCCARTHY BLVD. MILPITAS, CA 95033 PH: (408) 432-1900 LTC CONFIDENTIAL FOR CUSTOMER USE ONLY</small>
	NAME	DATE		
	PCB DES. MIKE P.	1-12-18		
	ENG. MIKE P.	1-12-18		
THIRD ANGLE PROJECTION				<b>TITLE: TOP SOLDERMASK</b> <b>LTC2972UJF 2-CHANNEL</b> <b>POWER SYSTEM MANAGER</b>
				
DO NOT SCALE DRAWING				
SCALE: NONE		<small>SIZE</small> N/A		<small>IC NO.</small> LTC2972 <small>DEMO CIRCUIT</small> 2675A
FILENAME: DC2675A_Rev1		<small>REV</small> 1		<small>SHEET</small> 6 OF 13


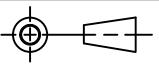
REVISION HISTORY				
ECO	REV	DESCRIPTION	APPROVED	DATE
-	1	PRODUCTION	MIKE P.	01/12/2018



UNLESS OTHERWISE SPECIFIED DIMENSIONS ARE IN INCHES TOLERANCES ON ANGLE +/- 1° 0.XX" = +/- 0.01" 0.XXX" = +/- 0.005" INTERPRET DIM AND TOL PER ASME Y14.5M-1994	APPROVALS		 1630 MCCARTHY BLVD. MILPITAS, CA 95035 PH: (408) 432-1908 LTC CONFIDENTIAL FOR CUSTOMER USE ONLY	
		NAME		DATE
	PCB DES.	MIKE P.		1-12-18
	ENG	MIKE P.		1-12-18
	THIRD ANGLE PROJECTION			
				
DO NOT SCALE DRAWING	SCALE: NONE		FILENAME: DC2675A_Rev1	SHEET 7 OF 13

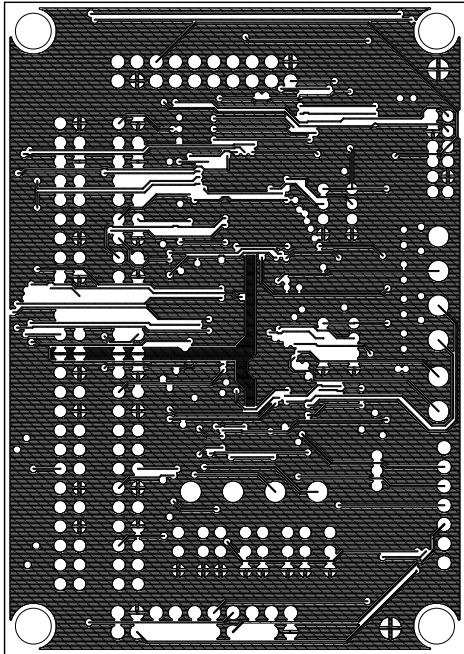
REVISION HISTORY				
ECO	REV	DESCRIPTION	APPROVED	DATE
-	1	PRODUCTION	MIKE P.	01/12/2018





UNLESS OTHERWISE SPECIFIED DIMENSIONS ARE IN INCHES TOLERANCES ON ANGLE +/- 1° 0.XX" = +/- 0.01" 0.XXX" = +/- 0.005" INTERPRET DIM AND TOL PER ASME Y14.5M-1994	APPROVALS			 1630 MCCARTHY BLVD. MILPITAS, CA 95033 PH: (408) 432-1908 LTC CONFIDENTIAL FOR CUSTOMER USE ONLY
	PCB DES.	NAME	DATE	
	ENG	MIKE P.	1-12-18	
	THIRD ANGLE PROJECTION			
				TITLE: 2 - INNER COPPER LTC2972UJF 2-CHANNEL POWER SYSTEM MANAGER
	SIZE	IC NO.	REV	
	N/A	LTC2972	1	
		DEMO CIRCUIT 2675A		
DO NOT SCALE DRAWING	SCALE: NONE		FILENAME: DC2675A_Rev1	SHEET 8 OF 13



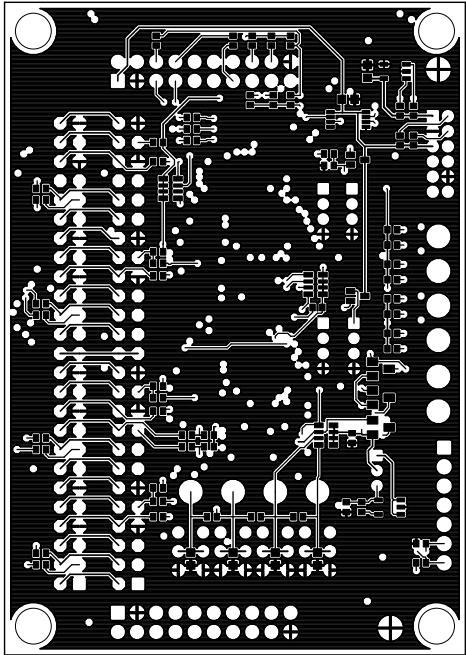
REVISION HISTORY				
ECO	REV	DESCRIPTION	APPROVED	DATE
-	1	PRODUCTION	MIKE P.	01/12/2018


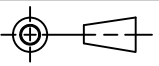


UNLESS OTHERWISE SPECIFIED DIMENSIONS ARE IN INCHES TOLERANCES ON ANGLE +/- 1° 0.XX" = +/- 0.01" 0.XXX" = +/- 0.005" INTERPRET DIM AND TOL PER ASME Y14.5M-1994	APPROVALS			 <div>1630 MCCARTHY BLVD. MILPITAS, CA 95033 PH: (408) 432-1908 LTC CONFIDENTIAL FOR CUSTOMER USE ONLY</div>	
		NAME	DATE		
	PCB DES.	MIKE P.	1-12-18		
	ENG	MIKE P.	1-12-18		
	THIRD ANGLE PROJECTION				
					
DO NOT SCALE DRAWING	SCALE: NONE			FILENAME: DC2675A_Rev1	SHEET 9 OF 13

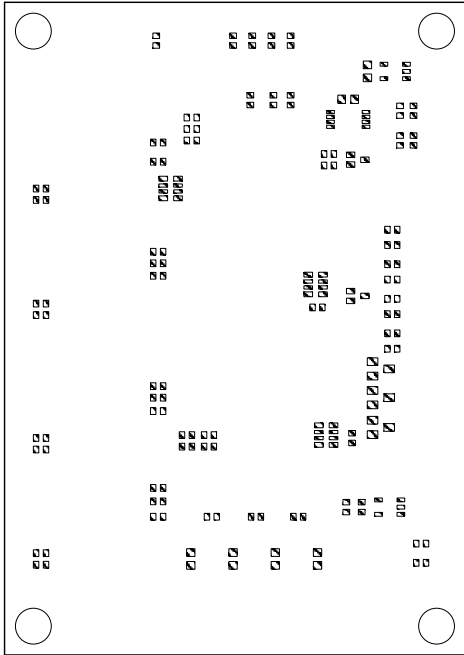
TITLE: 3 - INNER COPPER		
LTC2972UJF 2-CHANNEL		
POWER SYSTEM MANAGER		
SIZE	IC NO.	REV
N/A	LTC2972	1
DEMO CIRCUIT 2675A		


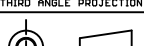
REVISION HISTORY				
ECO	REV	DESCRIPTION	APPROVED	DATE
-	1	PRODUCTION	MIKE P.	01/12/2018



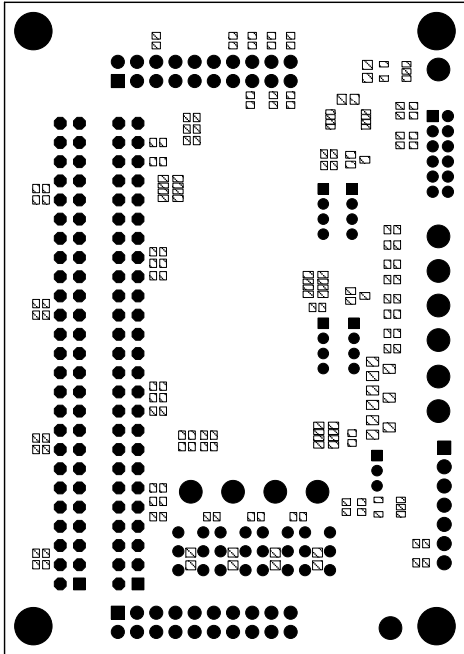
<small>UNLESS OTHERWISE SPECIFIED DIMENSIONS ARE IN INCHES TOLERANCES ON ANGLE +/- 1° 0.XX" = +/- 0.01" 0.XXX" = +/- 0.005" INTERPRET DIM AND TOL PER ASME Y14.5M-1994</small>	APPROVALS			 <small>1630 MCCARTHY BLVD. MILPITAS, CA 95033 PH: (408) 432-1900 LTC CONFIDENTIAL FOR CUSTOMER USE ONLY</small>
		NAME	DATE	
	PCB DES.	MIKE P.	1-12-18	
	ENG	MIKE P.	1-12-18	
THIRD ANGLE PROJECTION				<b>TITLE: 4 - BOTTOM COPPER</b> <b>LTC2972UJF 2-CHANNEL</b> <b>POWER SYSTEM MANAGER</b>
				
DO NOT SCALE DRAWING				
SCALE: NONE		SIZE	IC NO.	REV
		N/A	LTC2972	1
		DEMO CIRCUIT 2675A		
FILENAME: DC2675A_Rev1		SHEET 10 OF 13		



REVISION HISTORY				
ECO	REV	DESCRIPTION	APPROVED	DATE
-	1	PRODUCTION	MIKE P.	01/12/2018



UNLESS OTHERWISE SPECIFIED DIMENSIONS ARE IN INCHES TOLERANCES ON ANGLE +/- 1° 0.XX" = +/- 0.01" 0.XXX" = +/- 0.005" INTERPRET DIM AND TOL PER ASME Y14.5M-1994		<b>APPROVALS</b>		 1630 MCCARTHY BLVD. MILPITAS, CA 95033 PH: (408) 432-1908 LTC CONFIDENTIAL FOR CUSTOMER USE ONLY	
		NAME	DATE		
PCB DES.	MIKE P.	1-12-18			
ENG	MIKE P.	1-12-18			
THIRD ANGLE PROJECTION					
					
DO NOT SCALE DRAWING			SCALE: NONE		FILENAME: DC2675A_Rev1
			SIZE N/A		IC NO. LTC2972 DEMO CIRCUIT 2675A
			REV 1		SHEET 11 OF 13

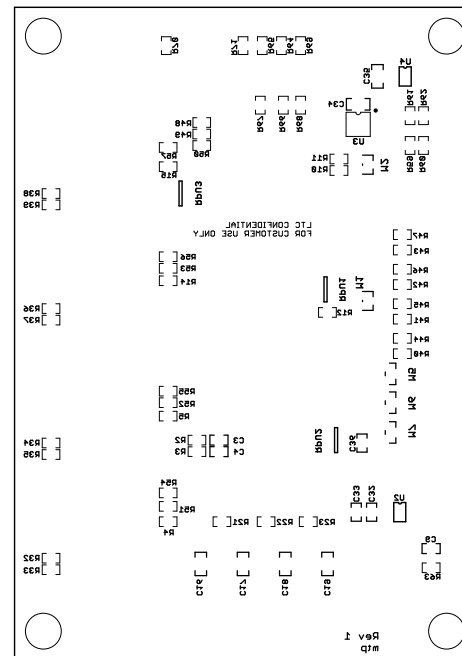
REVISION HISTORY				
ECO	REV	DESCRIPTION	APPROVED	DATE
-	1	PRODUCTION	MIKE P.	01/12/2018


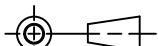


UNLESS OTHERWISE SPECIFIED DIMENSIONS ARE IN INCHES TOLERANCES ON ANGLE +/- 1° 0.XX" = +/- 0.01" 0.XXX" = +/- 0.005" INTERPRET DIM AND TOL PER ASME Y14.5M-1994	APPROVALS		 <div>1630 MCCARTHY BLVD. MILPITAS, CA 95033 PH: (408) 432-1900 LTC CONFIDENTIAL FOR CUSTOMER USE ONLY</div>		
		NAME		DATE	
	PCB DES.	MIKE P.		1-12-18	
	ENG	MIKE P.		1-12-18	
THIRD ANGLE PROJECTION			TITLE: BOTTOM SOLDERMASK LTC2972UJF 2-CHANNEL POWER SYSTEM MANAGER		
			SIZE N/A	IC NO. LTC2972 DEMO CIRCUIT 2675A	REV 1
DO NOT SCALE DRAWING	SCALE: NONE		FILENAME: DC2675A_Rev1		SHEET 12 OF 13

# REVISION HISTORY

ECO	REV	DESCRIPTION	APPROVED	DATE
-	1	PRODUCTION	MIKE P.	01/12/2018



UNLESS OTHERWISE SPECIFIED DIMENSIONS ARE IN INCHES TOLERANCES ON ANGLE +/- 1° 0.XXX" = +/- 0.01" 0.XXX" = +/- 0.005" INTERPRET DIM AND TOL PER ASME Y14.5M-1994	APPROVALS		 <div>1630 MCCARTHY BLVD. MILPITAS, CA 95033 PH: (408) 432-1900 LTC CONFIDENTIAL FOR CUSTOMER USE ONLY</div>	
	NAME	DATE		
	PCB DES. MIKE P.	1-12-18		
	ENG MIKE P.	1-12-18		
THIRD ANGLE PROJECTION			TITLE: BOTTOM SILKSCREEN LTC2972UJF 2-CHANNEL POWER SYSTEM MANAGER	
				
DO NOT SCALE DRAWING	SCALE: NONE	SIZE N/A	IC NO. LTC2972 DEMO CIRCUIT 2675A	REV 1
		FILENAME: DC2675A_Rev1	SHEET 13 OF 13	