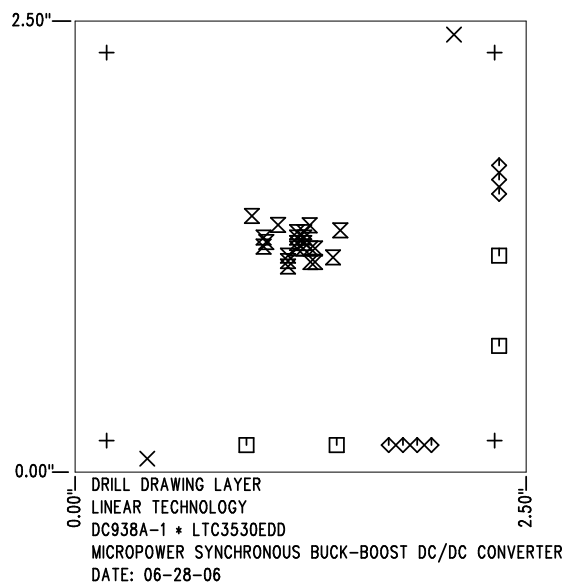


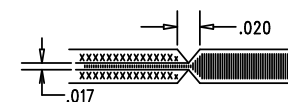
REVISIONS			
REV	DESCRIPTION	APPR	DATE
A-1	FINAL FABRICATION	DC	06-28-06




SIZE	QTY	SYM	PLTD	TOL
0.19	4	+	YES	+/-0.003"
0.07	2	×	NO	+/-0.003"
0.094	4	□	YES	+/-0.003"
0.035	7	◇	YES	+/-0.003"
0.012	23	⊗	YES	+/-0.003"

#### NOTES: UNLESS OTHERWISE SPECIFIED

- FAB PER IPC-A-600
- MATERIAL: EPOXY FIBERGLASS, NEMA GRADE FR-4  
FINISHED THICKNESS TO BE 0.062" +/- 0.006"  
TOTAL OF 4 LAYERS WITH 2 OZ. COPPER ON THE OUTER LAYERS AND 1 OZ. COPPER ON THE INTERNAL LAYERS.  
FLAMABILITY RATING: 94 V-0 MINIMUM .
- FINISH: SMOBC USING LPI BOTH SIDES, COLOR GREEN.  
LEAD-FREE SOLDER PLATING.  
FOR SILKSCREEN: USE WHITE NON-CONDUCTIVE INK.
- DRILLING: DRILL HOLES PER SCHEDULE. ALL PLATED THROUGH HOLES WITH COPPER, 0.001" MIN. / 0.0015" MAX. COPPER PLATE ALL HOLE SIZES ARE SPECIFIED AFTER PLATING. HOLE LOCATION TOLERANCES ARE +/-0.01" IN RELATION TO CENTER
- DO NOT ALTER ARTWORK e.g. TO ADD LOGO OR DATE CODE.
- SCORING FOR PANELIZED PCB:



<b>APPROVALS</b>		 <b>LINEAR TECHNOLOGY</b> 1630 MCCATHY BLVD MILPITAS, CA 95035 PH: (408)432-1900 LTC CONFIDENTIAL - FOR CUSTOMER USE ONLY	
DRAWN	INIT		
CHECK			<b>TITLE: FABRICATION DRAWING</b> MICROPOWER SYNCHRONOUS BUCK-BOOST DC/DC CONVERTER
DESIGN	KIM T.	06-28-06	
ENGR	DAVID C.	06-28-06	SIZE <b>A</b> DEMO <b>DC938A-1 * LTC3530EDD</b> REV. <b>A-1</b>
SCALE = NONE			SHT 1 of 1