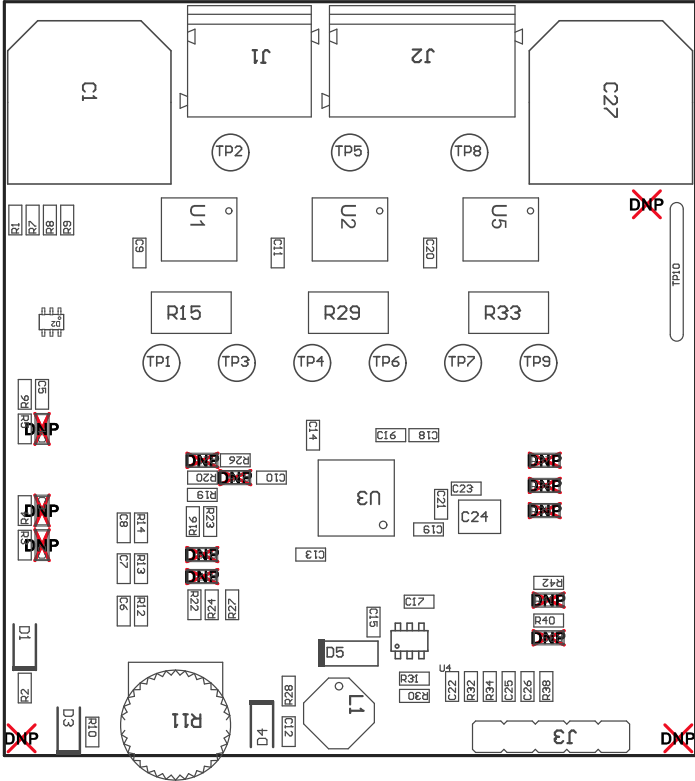
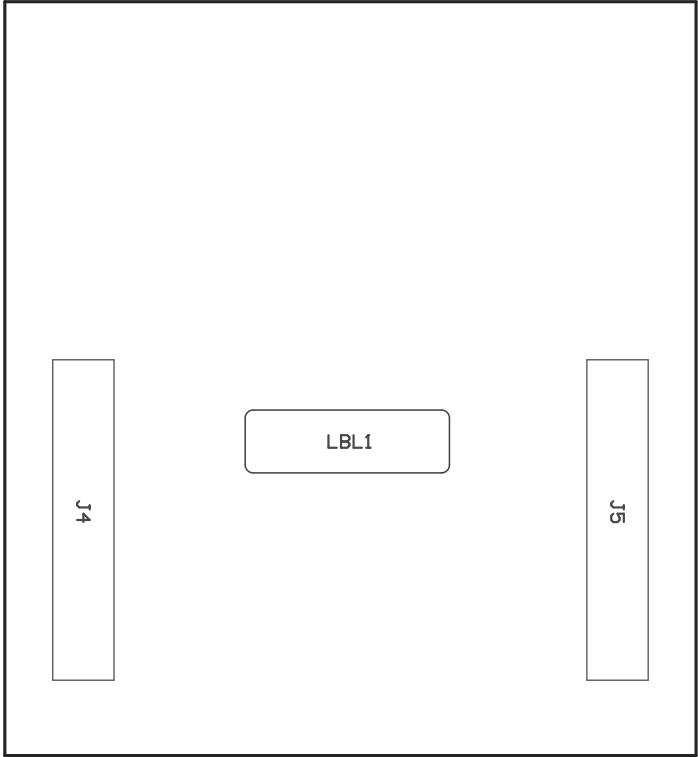


- Z24 ■Install label in silkscreened box after final wash. Text shall be 8 pt font. Text shall be per the Label Table in the PDF schematic.
- Z23 ■These assemblies are ESD sensitive, ESD precautions shall be observed.
- Z22 ■These assemblies must be clean and free from flux and all contaminants. Use of no clean flux is not acceptable.
- Z21 ■These assemblies must comply with workmanship standards IPC-A-610 Class 2, unless otherwise specified.



COMPONENTS MARKED 'DNP' SHOULD NOT BE POPULATED.  
ASSEMBLY VARIANT: 002

PCB VIEWED FROM TOP SIDE	BOARD #: MD008	REV: E2	SUN REV: Not In VersionControl
	TID #: N/A		
PLOT NAME = Top Assembly Drawing	GENERATED : 10/30/2017 5:22:32 PM	TEXAS INSTRUMENTS	



COMPONENTS MARKED 'DNP' SHOULD NOT BE POPULATED.  
ASSEMBLY VARIANT: 002

PCB VIEWED FROM BOTTOM SIDE	BOARD #: MD008	REV: E2	SVN REV: Not In VersionControl
	TID #: N/A		
PLOT NAME = Bottom Assembly Drawing	GENERATED : 10/30/2017 5:22:33 PM		TEXAS INSTRUMENTS