


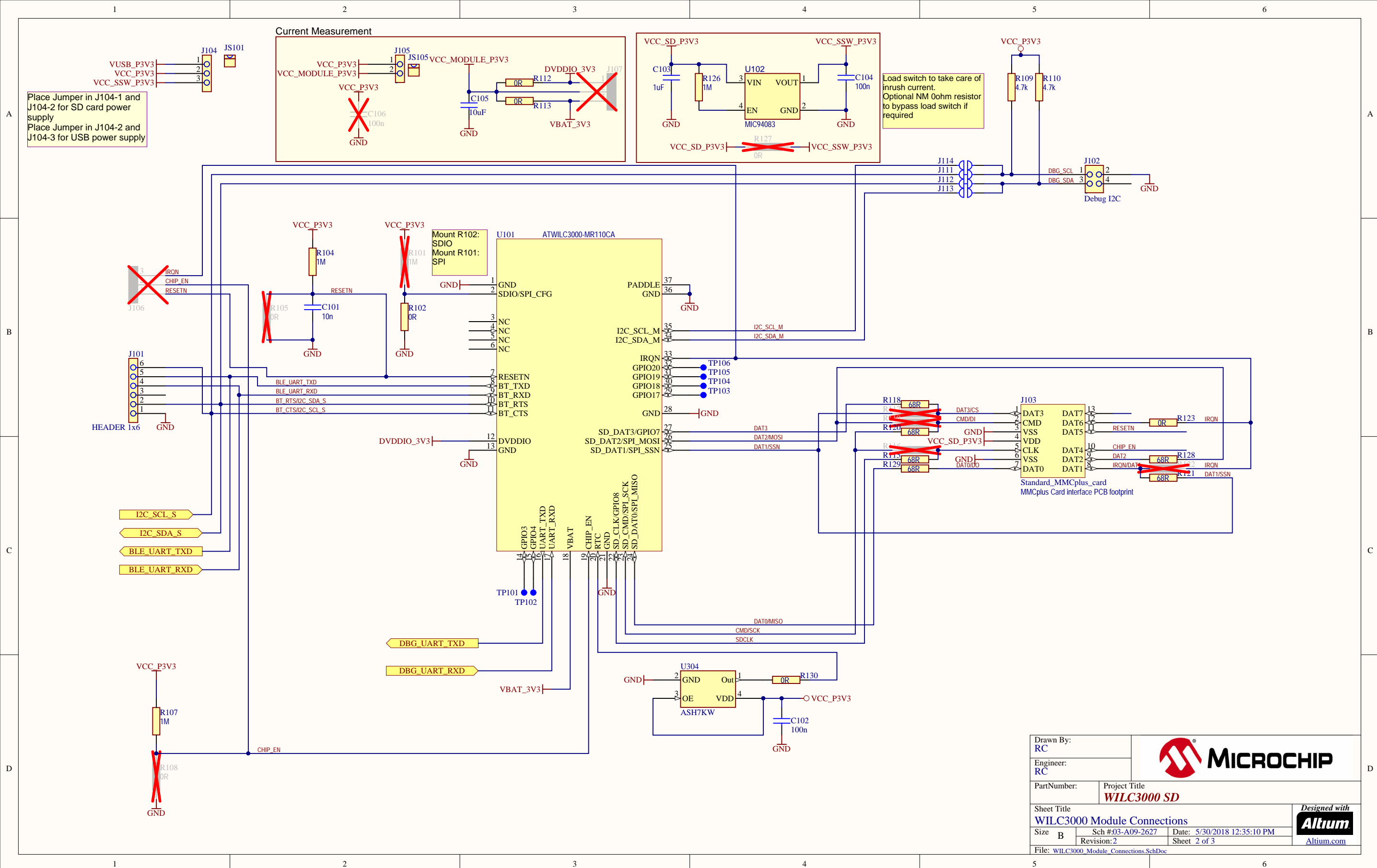
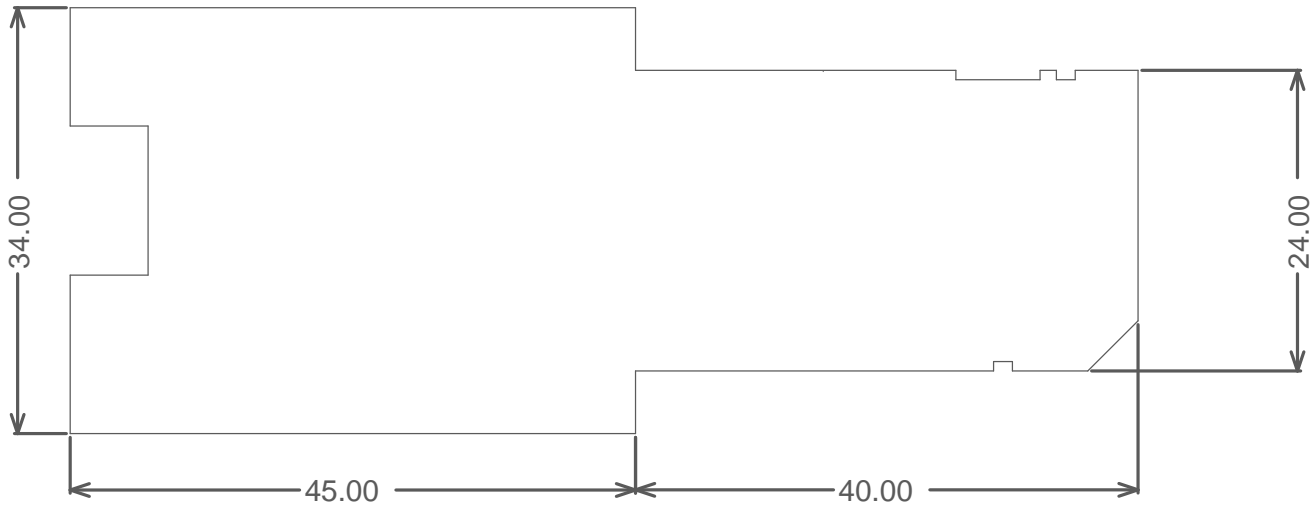
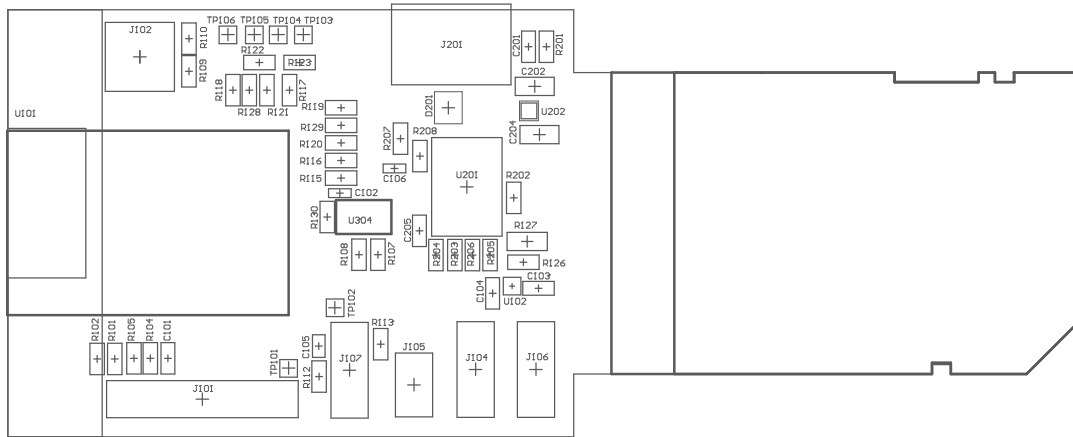
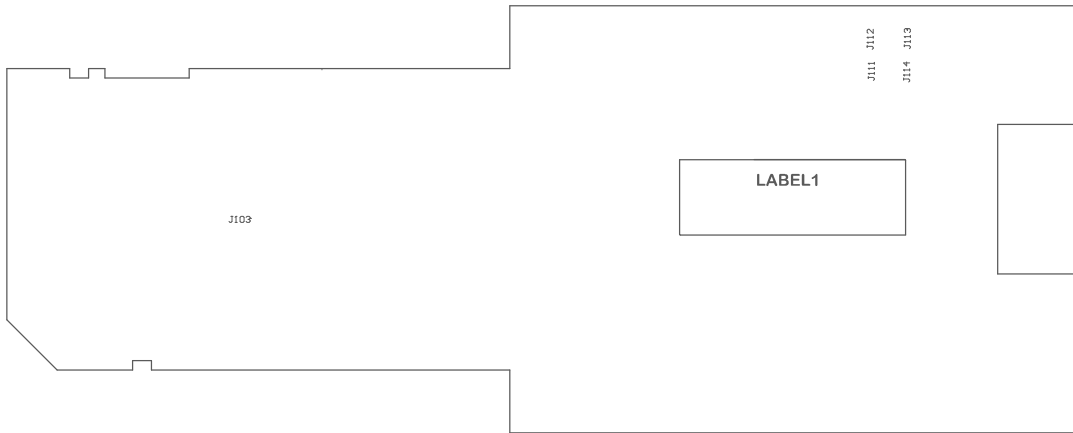


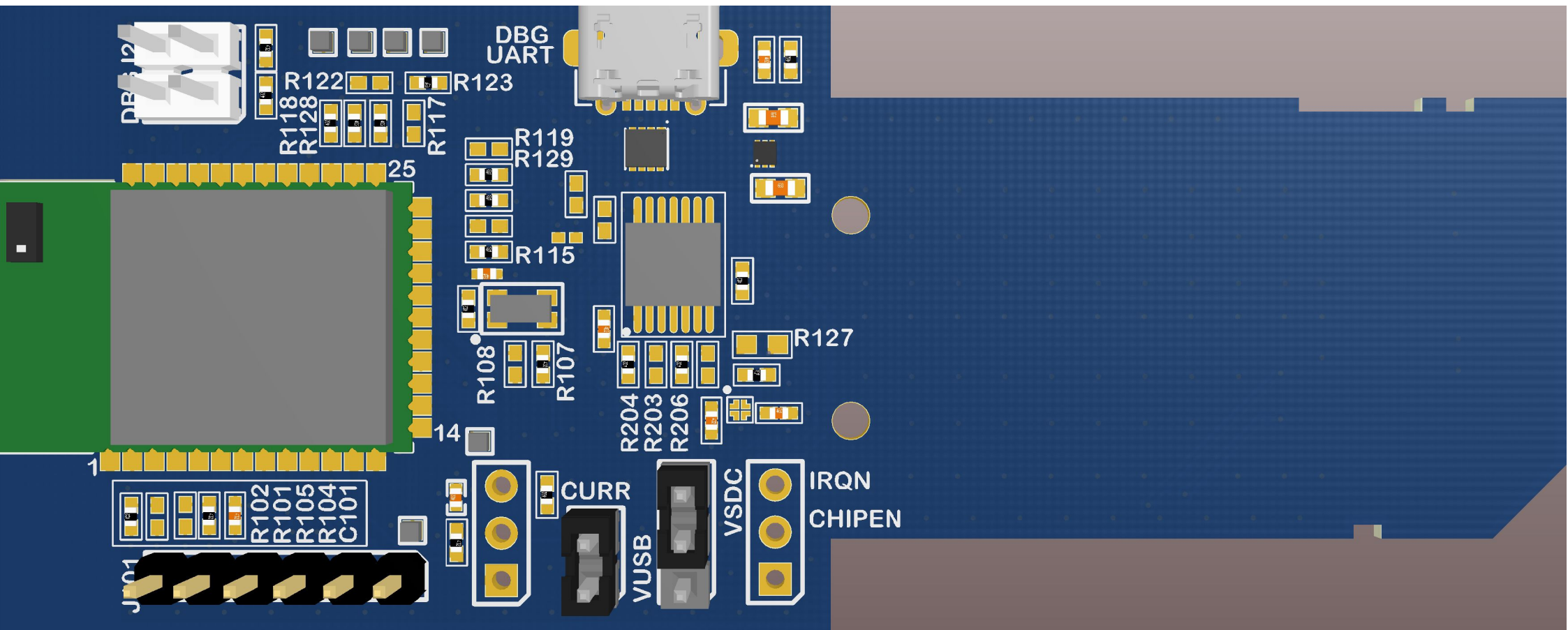
Label PCBA			
Drawn By: RC	 MICROCHIP		
Engineer: RC			
PartNumber:	Project Title WILC3000 SD		
Sheet Title 1		Designed with 	
Size B	Sch #03-A09-2627	Date: 5/30/2018 12:35:10 PM	
	Revision: 2	Sheet 1 of 3	
File: WILC3000 SD Top level.SchDoc			












MICROCHIP

CE 



WILC3000 SD

A08-2481 Rev 2

PCBA LABEL

Microchip © 2018



J102

GPIO20
GPIO19
GPIO18
GPIO17



J201

BTCTS

BTXID

BTRXD

NC

BTRTS

GND

GPIO3

VDDIO

VBAT

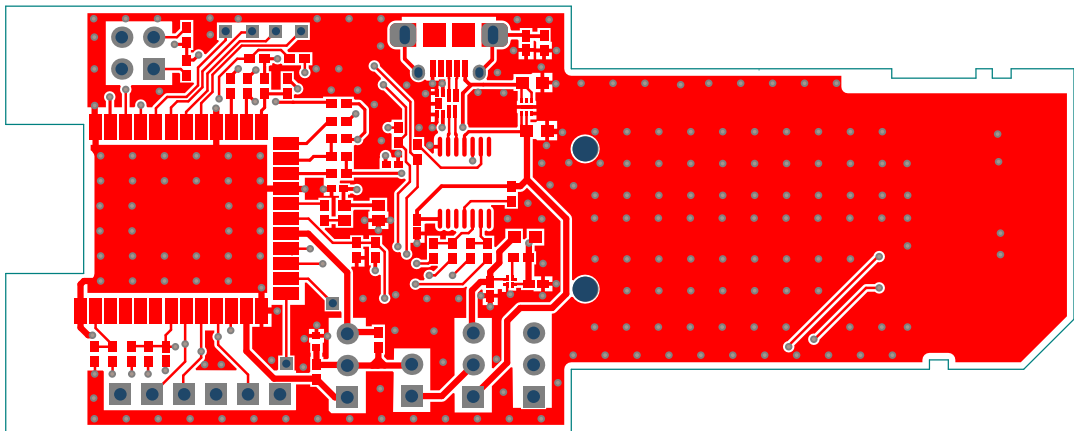
GPIO4

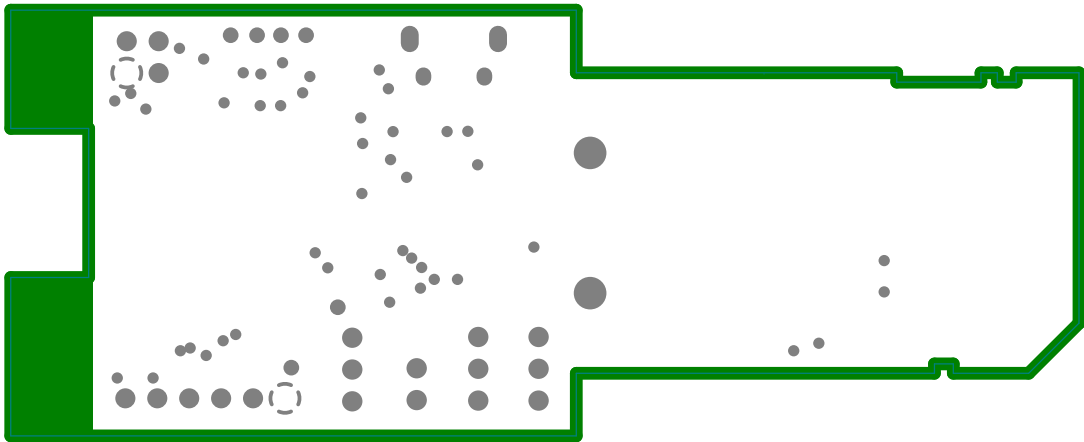
J105

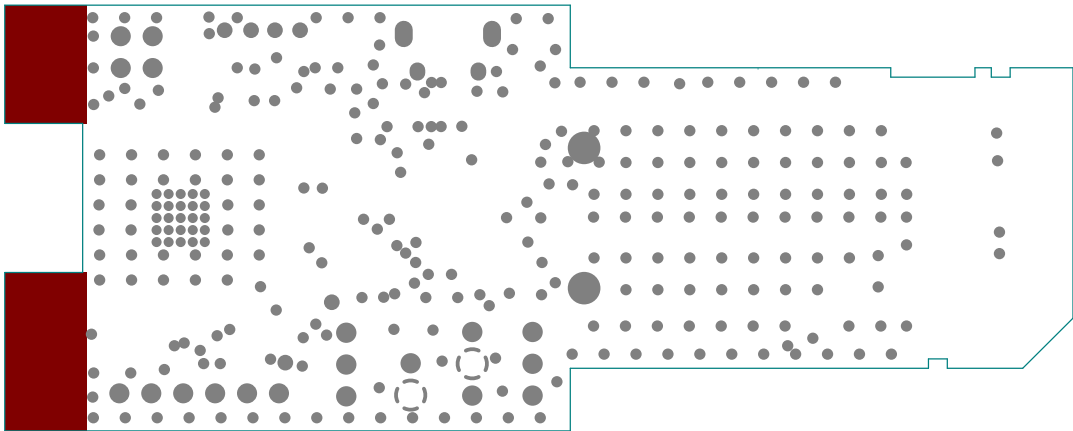
J104

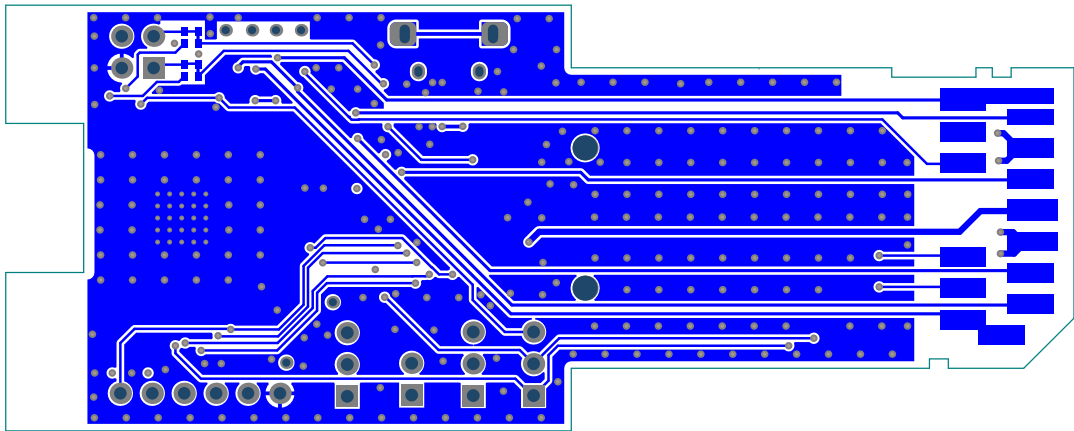
J106

RST









Component list

<Parameter Title not found>



Source Data From: WILC3000_SD.PrjPCB
Project: WILC3000_SD.PrjPCB
Variant: Variant of WILC3000 SD

Report Date: 5/30/2018 12:35:45 PM
Print Date: 5/30/2018 11:45:32 AM

Fitted	Designator	Quantity	Value	Manufacturer	MPN	Description
Fitted	C101	1	10n	YAGEO CORP	CC0402KRX7R8BB103	Ceramic capacitor, SMD 0402, X7R, 25V, +/-10%
Fitted	C102	1	100n	Kemet	C0402C104K4RACTU	Ceramic capacitor, SMD 0402, X7R, 16V, +/-10%
Fitted	C103	1	1uF	Murata	GRM155R61A105KE15D	Ceramic capacitor, SMD 0402, X5R, 10V, 10%
Fitted	C104, C205	2	100n	Kemet	C0402C104K4RACTU	Ceramic capacitor, SMD 0402, X7R, 16V, +/-10%
Fitted	C105	1	10uF	Murata	GRM155R60J106ME15	Ceramic capacitor, SMD 0402, X5R, 6.3V, 20%
Fitted	C201	1	4.7n	PHYCOMP	2238 587 15632	Ceramic capacitor, SMD 0402, X7R, 25V, +/-10% (d635287)
Fitted	C202, C204	2	2.2u	Kemet	C0603C225K8PAC7867	Ceramic capacitor, SMD 0603, X5R, 10V, +/-10%
Fitted	D201	1	EM1212MTTAG			EM12121, S2EM12121 Single Pair Common Mode Filter with ESD Protection
Fitted	J101	1	PIN HEADER 1x6 PIP	Freiber	CD0750141X6T&R	1x6 pin header, 2.54mm pitch, THM Pin-in-Paste
Fitted	J102	1	CD0750142X2	Freiber	CD0750142X2	2x2 pin header, 2.54 mm pitch, Pin-in-Paste THM
Fitted	J104	1	1125-1103S0S113R1	WCON HARDWARE ELECTRONICS CO., LTD	1125-1103S0S113R1	1x3 pin header, 2.54mm pitch, Pin-in-Paste THM
Fitted	J105	1	1125-1102S0S113R1	WCON HARDWARE ELECTRONICS CO., LTD	1125-1102S0S113R1	1x2 pin header, 2.54mm pitch, Pin-in-Paste THM
Fitted	J201	1	ZK62D-B-5PA8	HIROSE	ZK62D-B-5PA8(30)	Micro USB B Connector, Standard SMT + DiP
Fitted	JS101, JS105	2	SNT-100-BK-G	SAMTEC	SNT-100-BK-G	Jumper cap for 2.54mm pinheader
Fitted	LABEL100	1	Label PCBA	ACT Logimark AS	505462	PCBA Identification label PP Top White Gloss
Fitted	PCB100	1	WILC3000 SD			WILC3000 SD
Fitted	PCBADC0100	1	WILC3000 SD PCBA documentation			WILC3000 SD PCBA documentation
Fitted	R102, R112, R113, R123, R130, R204, R206	7	0R	(n/a)	RMCF0402ZT0R00	RES 0.0 OHM 1/16W 0402 SMD
Fitted	R104, R107, R126, R201	4	1M	ASJ	CR10-1004-FK	Thick film resistor, SMD 0402, 1/16W, 1%
Fitted	R109, R110	2	4.7k	PHYCOMP	2322 706 74702L	Thick film resistor, SMD 0402, 1/16W, 1%
Fitted	R115, R118, R120, R121, R128, R129	6	68R	ASJ	CR10-68R0-FK	Thick film resistor, SMD 0402, 1/16W, 1%
Fitted	R202	1	100k	Panasonic	ERJ2GEJ104X	Thick film resistor, SMD 0402, 1/16W, 5%
Fitted	TEST1100	1	WILC3000 SD Test Software			WILC3000 SD Test Software
Fitted	TESTDOC100	1	WILC3000 SD Test manual			WILC3000 SD Test manual
Fitted	U101	1	ATWILC3000-MR110CA	ATMEL	ATWILC3000-MR110CA	IEEE 802.11 b/g/n Link Controller with Integrated Bluetooth 4.0, PCB Antenna
Fitted	U102	1	MIC94083	MICROCHIP	MIC94083YFT	High side load switch with soft start up of 800us
Fitted	U201	1	MCP2221A	Microchip	MCP2221A- I/ST	USB 2.0 to I2C/UART Protocol Converter with GPIO (TSSOP)
Fitted	U202	1	MIC5528-3.3YMT	Microchip	MIC5528-3.3YMT-T5	LDO 3.3V 0.5A 6TDFN
Fitted	U304	1	ASH7KW	ABRACON	ASH7KW-32.768kHz-L-T	32.768kHz LOW POWER SMD CRYSTAL OSCILLATOR
Not Fitted	C106	0	100n	Kemet	C0402C104K4RACTU	Ceramic capacitor, SMD 0402, X7R, 16V, +/-10%
Not Fitted	J106, J107	0	1125-1103S0S113R1	WCON HARDWARE ELECTRONICS CO., LTD	1125-1103S0S113R1	1x3 pin header, 2.54mm pitch, Pin-in-Paste THM
Not Fitted	R101	0	1M	ASJ	CR10-1004-FK	Thick film resistor, SMD 0402, 1/16W, 1%
Not Fitted	R105, R108, R203, R205, R207, R208	0	0R	(n/a)	RMCF0402ZT0R00	RES 0.0 OHM 1/16W 0402 SMD
Not Fitted	R116, R117, R119, R122	0	68R	ASJ	CR10-68R0-FK	Thick film resistor, SMD 0402, 1/16W, 1%
Not Fitted	R127	0	0R	Panasonic	ERJ-3GEY0R00V	Thick film resistor, SMD 0603, 1/10W, 1%

Approved

Notes