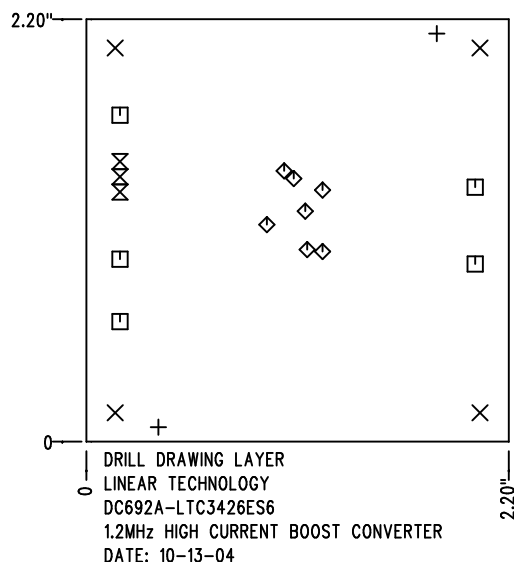


REVISIONS			
REV	DESCRIPTION	APPR	DATE
A	PROTOTYPE RELEASE		

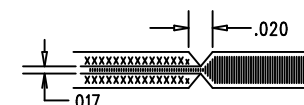



SHOWN FROM COMPONENT SIDE

SIZE	QTY	SYM	PLTD	TOL
0.07	2	+	NO	+/-0.003"
0.125	4	X	YES	+/-0.003"
0.094	5	□	YES	+/-0.003"
0.015	7	◇	YES	+/-0.003"
0.035	3	⊗	YES	+/-0.003"

NOTES: UNLESS OTHERWISE SPECIFIED

- FAB PER IPC-A-600
- MATERIAL: EPOXY FIBERGLASS, NEMA GRADE FR-4
FINISHED THICKNESS TO BE 0.062" +/- 0.006"
TOTAL OF 2 LAYERS WITH 2 OZ. COPPER EACH LAYER.
FLAMABILITY RATING: 94 V-0 MINIMUM .
- FINISH: SMOBC USING LPI BOTH SIDES, COLOR GREEN.
WHITE TIN IMMERSION (OMIKRON).
FOR SILKSCREEN: USE WHITE NON-CONDUCTIVE INK.
- DRILLING: DRILL HOLES PER SCHEDULE. ALL PLATED THROUGH HOLES
WITH COPPER, 0.001" MIN. / 0.0015" MAX. COPPER PLATE
ALL HOLE SIZES ARE SPECIFIED AFTER PLATING. HOLE
LOCATION TOLERANCES ARE +/-0.01" IN RELATION TO CENTER
- DO NOT ALTER ARTWORK e.g. TO ADD LOGO OR DATE CODE.
- SCORING FOR PANELIZED PCB:



APPROVALS			 LINEAR TECHNOLOGY 1630 MCCATHY BLVD MILPITAS, CA 95035 PH: (408)432-1900 LTC CONFIDENTIAL- FOR CUSTOMER USE ONLY	
DRAWN	INIT	DATE		
CHECK			TITLE: FABRICATION DRAWING 1.2MHz HIGH CURRENT BOOST CONVERTER	
DESIGN	KIM T.	10-13-04		
ENGR	CHARLIE Z.	10-13-04	SIZE A DEMO DC692A-LTC3426ES6 REV. A	
SCALE = NONE			DES- 0000	SHT 1 of 1