

6

5

4

3

2

1

D

D

C

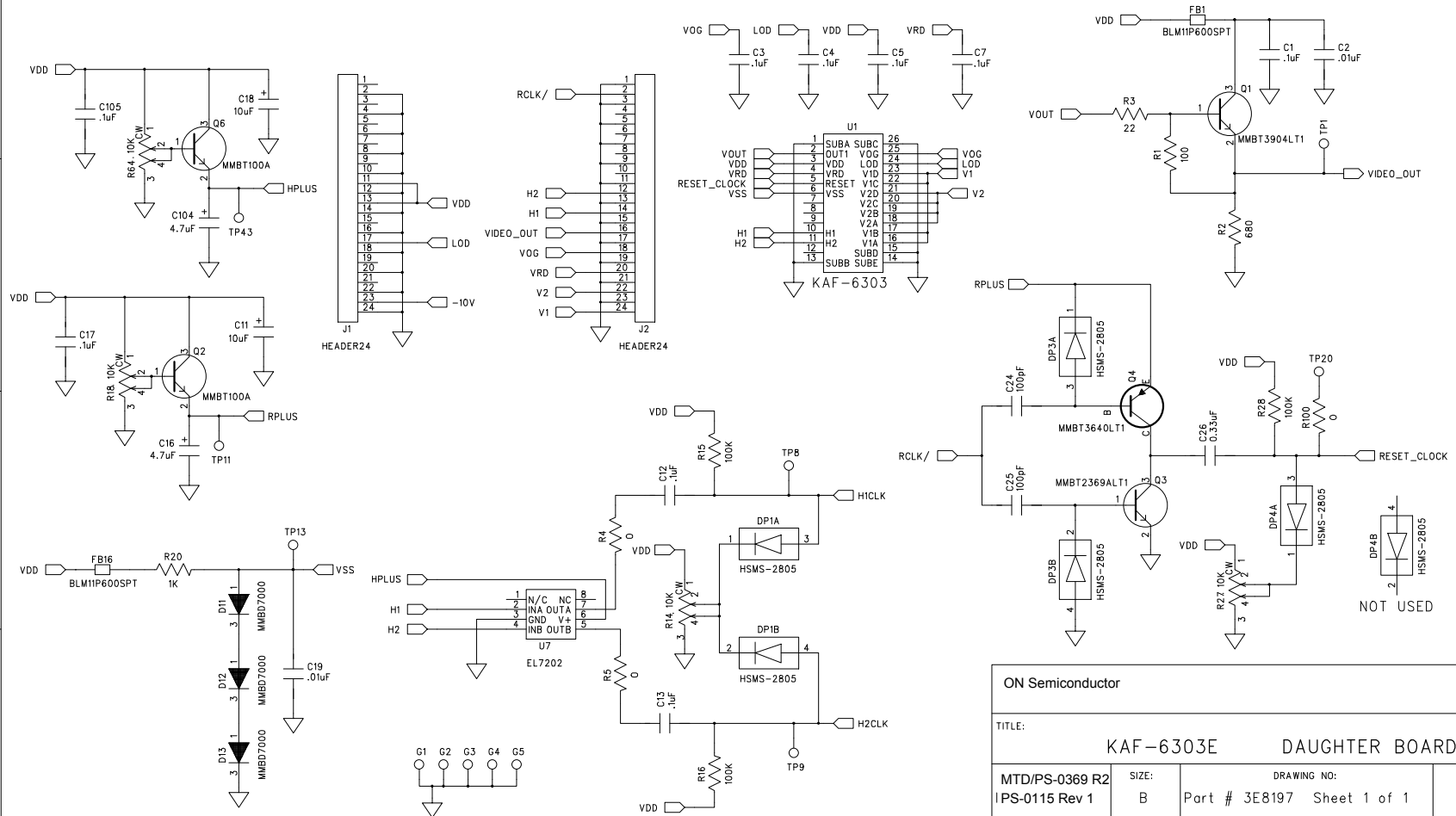
C

B

B

A

A



ON Semiconductor			
TITLE: KAF-6303E DAUGHTER BOARD			
MTD/PS-0369 R2 IPS-0115 Rev 1	SIZE: B	DRAWING NO: Part # 3E8197 Sheet 1 of 1	
DRAWN BY: J. MAYNARD		APPROVED BY: R. BROLLY	

KAF 6303
Imager BOARD:

S16 Imager
3E8197

6/21/2002
Rev. 1

Top Side

<u>Kodak #</u>	<u>PART</u>	<u>DESCRIPTION</u>	<u>PACKAGE</u>	<u>QTY</u>	<u>BOARD REFERENCE #</u>	<u>MANUFACTURER</u>
1E9508				1	Printed Circuit Board	PCB
6C4490	BLM11P600SPT		FERRITE 0603	2	FB1,FB16	MURATA ERIE
4B3748	06035A101JAT4A	100pF 50VDC	CAP 0603	2	C24-25	AVX
4B4011	0603YC104MAT4A	.1uF 16V	CAP 0603	3	C3-C4,C7	AVX
7B9273	0805YC334KATMA	0.33uF 16VDC	CAP 0805	1	C26	AVX
4B4495	TMC-MB1D475MTR	4.7uF 20VDC	CAP B CASE	2	C16,C104	HITACHI
586506	MMBD7000LT1	DIODE	SOT-23	3	D11,D13	MOTOROLA
4B4317	MMBT2369ALT1	TRANSISTOR	SOT-23	1	Q3	MOTOROLA
273733	MMBT100A	TRANSISTOR	SOT-23	2	Q2,Q6	FAIRCHILD
236307	MMBT3640LT1	TRANSISTOR	SOT-23	1	Q4	MOTOROLA
	0 OHM		RES 0603	1	R100	
	CRCW0603-220-JT	22 OHM 5%	RES 0603	1	R3	DALE
	CRCW0603-101-JT	100 OHM 5%	RES 0603	1	R1	DALE
	CRCW0603-681-JT	680 OHM 5%	RES 0603	1	R2	DALE
	CRCW0603-102-JT	1K OHM 5%	RES 0603	1	R20	DALE
	CRCW0603-1003-FT	100K OHM 1%	RES 0603	1	R28	DALE
2E5291	EL7202CS	DRIVER	S0IC-8	1	U7	ELANTEC
	BCS-112-L-D-TE	CONNECTOR	HEADER 24	2	J1,J2	SAMTEC

Bottom Side

<u>PART</u>	<u>DESCRIPTION</u>	<u>PACKAGE</u>	<u>QTY</u>	<u>BOARD REFERENCE #</u>	<u>MANUFACTURER</u>
-------------	--------------------	----------------	------------	--------------------------	---------------------

4B3745	06035C103KAT4A	.01uF 50VDC	CAP 0603	2	C2,C19	AVX
4B4011	0603YC104MAT4A	.1uF 16V	CAP 0603	6	C1,C5,C12-13,C17,C105	AVX
	258541 TMC-MC1D106MTR	10 uF 20V	CAP C CASE	2	C11,C18	HITACHI
	586506 MMBD7000LT1	DIODE	SOT-23	1	D12	MOTOROLA
	902510 HSMS-2805	DIODE	SOT-143	3	DP1,DP3-4	HEWLETT-PACKARD
	616292 MMBT3904LT1	TRANSISTOR	SOT-23	1	Q1	MOTOROLA
	0 OHM		RES 0603	2	R4,R5	
	3266X-1-103	10K POT	THRU-HOLE	4	R14,R18,R27,R64	BOURNS
	CRCW0603-1003-FT	100K OHM 1%	RES 0603	2	R15-16	DALE
2E4501	3-347996-0	CCD SOCKET	THRU-HOLE SIP			AMP
	5-826926-0	SINGLE PIN	TEST POINT	12	TP1,TP8-9,TP11,TP13,TP20,TP43 G1-G5	AMP