

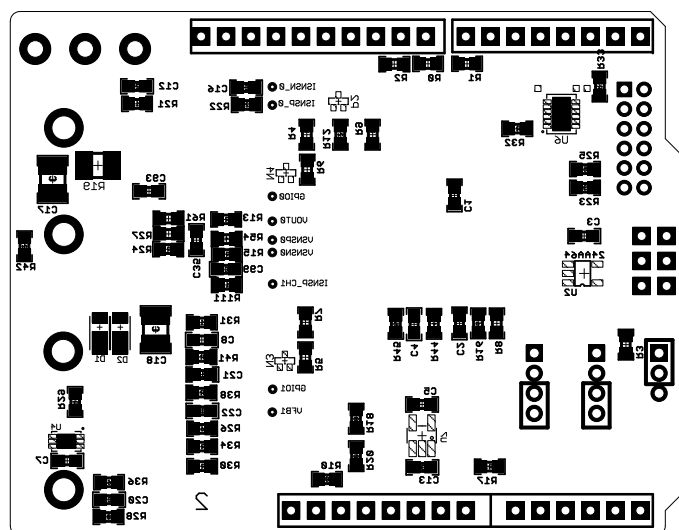
# NOTES: UNLESS OTHERWISE SPECIFIED

1. WORKMANSHIP SHALL BE IN ACCORDANCE WITH IPC-A-610
2. PARTS TO OMIT WILL BE SPECIFIED ON THE BILL OF MATERIALS.  
MASK THE SOLDER STENCIL WHERE PARTS ARE OMITTED.
3. DEPANELIZE BOARDS AFTER ASSEMBLY AND ROUTE OUT  
THE BREAKOUT TABS ON ALL EDGES.
4. ASSY PROCESS WILL INCLUDE: REFLOW SOLDER TOP SIDE SMD.
5. DO NOT APPLY ANY KIND OF ASSEMBLY STAMP OR QA STAMP  
ON ANY BOARD

## REVISION HISTORY

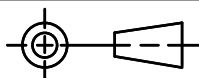
ECO	REV	DESCRIPTION	APPROVED	DATE
-	1	PRODUCTION	NATHAN E.	01/30/2016

6. INSTALL J1 HEADERS WITH LONG PINS POINTED OUT  
OF THE BOTTOM OF THE BOARD (DOWN).
7. INSTALL SHUNTS AS SHOWN.
8. MIND THE POLARITY OF C91 AND ALL LEDS



UNLESS OTHERWISE SPECIFIED  
DIMENSIONS ARE IN INCHES  
TOLERANCES ON ANGLE +/- 1°  
0.XX" = +/- 0.01"  
0.XXX" = +/- 0.005"  
INTERPRET DIM AND TOL  
PER ASME Y14.5M-1994

THIRD ANGLE PROJECTION



DO NOT SCALE DRAWING

## APPROVALS

	NAME	DATE
PCB DES.	NATHAN E.	1-30-16
ENG	NATHAN E.	1-30-16



1630 MCCARTHY BLVD.  
MILPITAS, CA 95033  
PH: (408) 432-1900  
LTC CONFIDENTIAL  
FOR CUSTOMER USE ONLY

TITLE: BOM FOR ASSEMBLY DRAWING  
LTC2970 LINDUINO SHIELD  
WITH LT3581 AND LTC3604

SIZE N/A	IC NO. LTC2970 DEMO CIRCUIT 2467	REV 1
-------------	--	----------

SCALE: NONE

FILENAME: DC2467

SHEET 1 OF 1