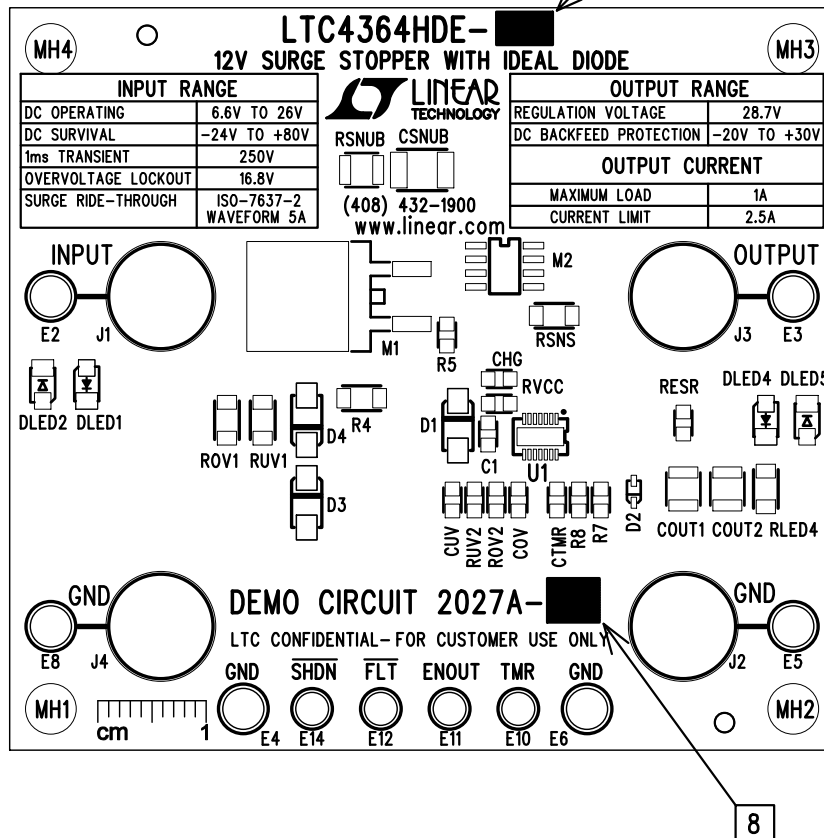
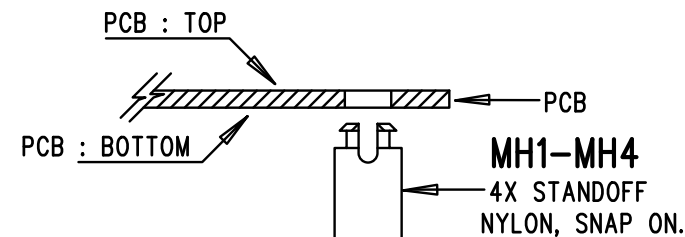


REVISION HISTORY				
ECO	REV	DESCRIPTION	APP. ENG.	DATE
-	1	1ST PROTOTYPE	MITCHELL L.	07-19-12



NOTES: UNLESS OTHERWISE SPECIFIED

1. WORKMANSHIP SHALL BE IN ACCORDANCE WITH IPC-A-610.
2. ASSEMBLY PROCESS SHALL INCLUDE: REFLOW SOLDER TOP SIDE SMD. MAXIMUM SOLDER TEMPERATURE IS 240 DEGREES CELSIUS.
3. PARTS TO OMIT WILL BE SPECIFIED ON THE BILL OF MATERIALS. LOCATIONS OF OMITTED PARTS SHALL BE FREE OF SOLDER. MASK THE SOLDER STENCIL WHERE SMT PARTS ARE OMITTED.
4. NO SHUNT.
5. DEPANELIZE BOARDS AFTER ASSEMBLY AND ROUTE-OUT THE BREAKOUT TABS ON FOUR SIDES OF THE BOARD EDGE.
6. DO NOT APPLY ANY KIND OF ASSEMBLY STAMP OR QA STAMP TO ANY BOARD.
7. INSTALL 4 STANDOFFS AS SHOWN BELOW:



8. MARK EACH LTC PART NUMBER AND ASSEMBLY TYPE WITH BLACK PERMANENT MARKER AS SHOWN IN TABLE BELOW:

ASSY	U1
DC2027A-A	LTC4364HDE-1
DC2027A-B	LTC4364HDE-2

APPROVALS

PCB DES.	KIM T.
APP ENG.	MITCHELL L.
SCALE = NONE	



1630 MCCARTHY BLVD
MILPITAS, CA 95035
PH: (408)432-1900
www.linear.com
LTC CONFIDENTIAL-
FOR CUSTOMER USE ONLY

TITLE: TOP ASSEMBLY DRAWING

12V SURGE STOPPER WITH IDEAL DIODE

SIZE	IC NO.	LTC4364HDE-1/-2	REV.
N/A		DEMO CIRCUIT 2027A	1

FILENAME: DC2027A-1.PCB

SHT 1 OF 2