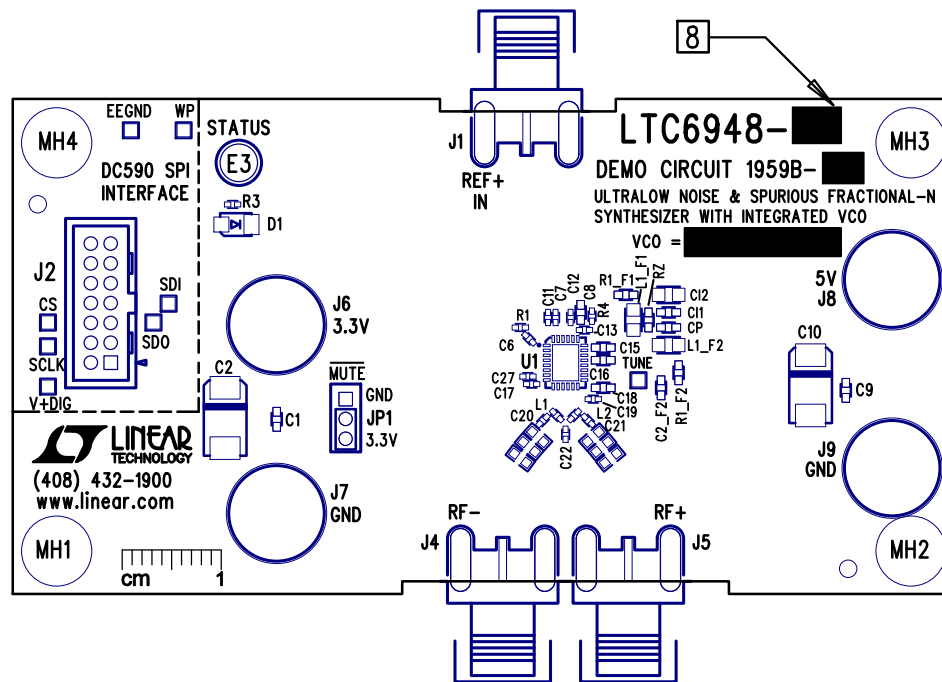
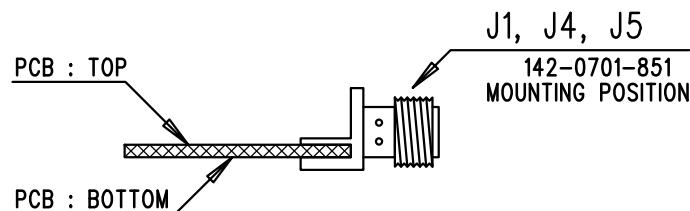
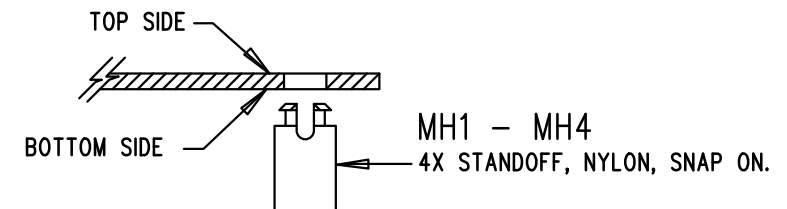
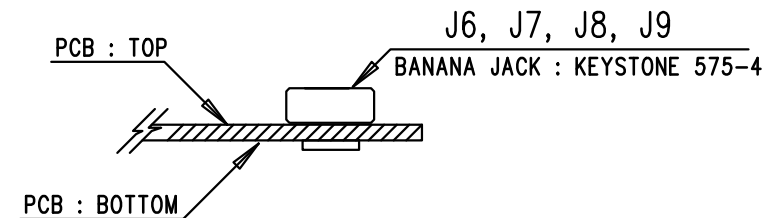


REVISION HISTORY				
ECO	REV	DESCRIPTION	APP. ENG.	DATE
-	1	REBUILD WITH CHANGE	CHRIS P.	11-25-15



## NOTES: UNLESS OTHERWISE SPECIFIED

1. WORKMANSHIP SHALL BE IN ACCORDANCE WITH IPC-A-610.
2. ASSEMBLY PROCESS SHALL INCLUDE: REFLOW SOLDER TOP SIDE SMD. MAXIMUM SOLDER TEMPERATURE IS 240 DEGREES CELSIUS.
3. PARTS TO OMIT WILL BE SPECIFIED ON THE BILL OF MATERIALS. LOCATIONS OF OMITTED PARTS SHALL BE FREE OF SOLDER. MASK THE SOLDER STENCIL WHERE SMT PARTS ARE OMITTED.
4. INSTALL SHUNTS AS SHOWN ON ASSY DRAWING.
5. DEPANELIZE BOARDS AFTER ASSEMBLY AND ROUTE-OUT THE BREAKOUT TABS ON FOUR SIDES OF THE BOARD EDGE.
6. DO NOT APPLY ANY KIND OF ASSEMBLY STAMP OR QA STAMP TO ANY BOARD.
7. INSTALL CONNECTORS, TURRETS, STANDOFFS AS SHOWN BELOW:



8. MARK EACH LTC PART NUMBER, ASSEMBLY TYPE, SUFFIX, AND VCO RANGE WITH BLACK PERMANENT MARKER AS SHOWN IN TABLE BELOW:

ASSY	U1	SUFFIX	VCO
A	LTC6948-1	1	2.24 TO 3.74 GHz
B	LTC6948-2	2	3.08 TO 4.91 GHz
C	LTC6948-3	3	3.84 TO 5.79 GHz
D	LTC6948-4	4	4.20 TO 6.39 GHz

## APPROVALS

PCB DES.	KIM T.
APP ENG.	CHRIS P.



TITLE: TOP ASSEMBLY DRAWING		
ULTRALOW NOISE & SPURIOUS FRACTIONAL-N SYNTHESIZER WITH INTEGRATED VCO		
SIZE	IC NO. LTC6948IUF-1/2/3/4	REV.
N/A	DEMO CIRCUIT 1959B	1

SCALE = NONE

FILENAME: DC1959B-1.PCB

SHT 1 OF 2