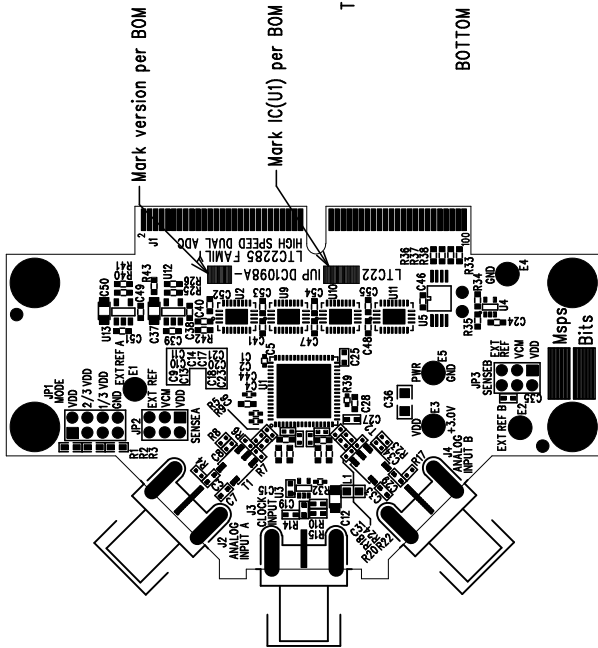


REVISIONS		
REV	DESCRIPTION	DATE




Silkscreen Top
ASSY TOP

NOTES : Unless Otherwise Specified

1. BREAK BOARDS FROM THE PANEL WHEN ASSEMBLY IS COMPLETE.
2. OPTIONAL COMPONENTS ARE UNSTUFFED AND SHOULD BE FREE OF SOLDER AFTER ASSEMBLY.
3. JUMPER INSTALLATIONS:
JP1: VDD JP2: VDD
JP3: VDD

ASSY DRAWING

APPROVALS			 LINEAR TECHNOLOGY		1630 McCarthy Blvd. Milpitas, CA 95035 PH: (408)432-1900	
	INIT	DATE				
DRAWN						
CHECK						
DESIGN	JUNE WU	4/26/06	TITLE: LTC2285 FAMILY HIGH SPEED DUAL ADC			
ENGR	MARK THOREN	4/26/06				
			SIZE	A	DC1098A	REV. A
SCALE = NONE			DES-250		SHT 1 of 1	