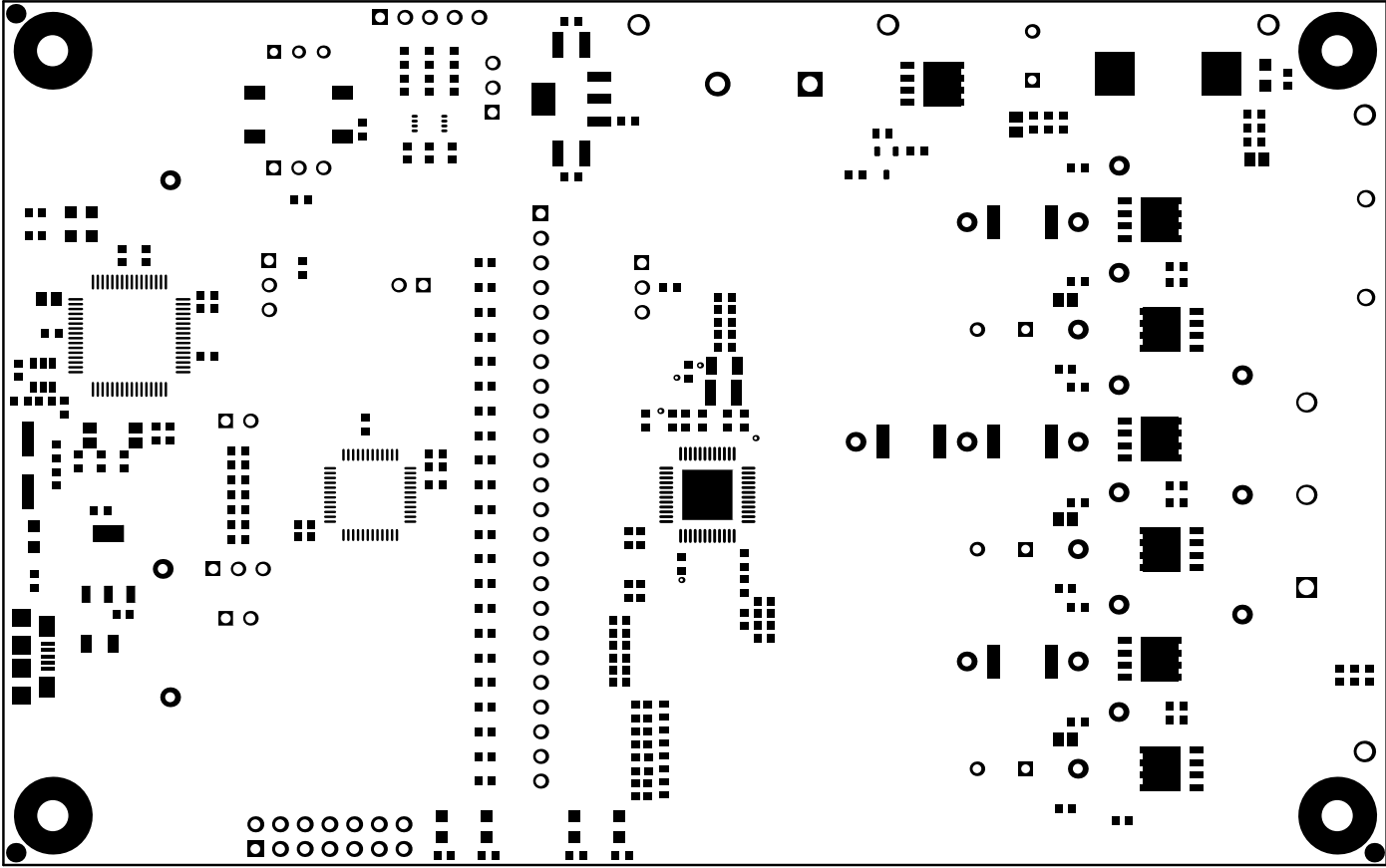
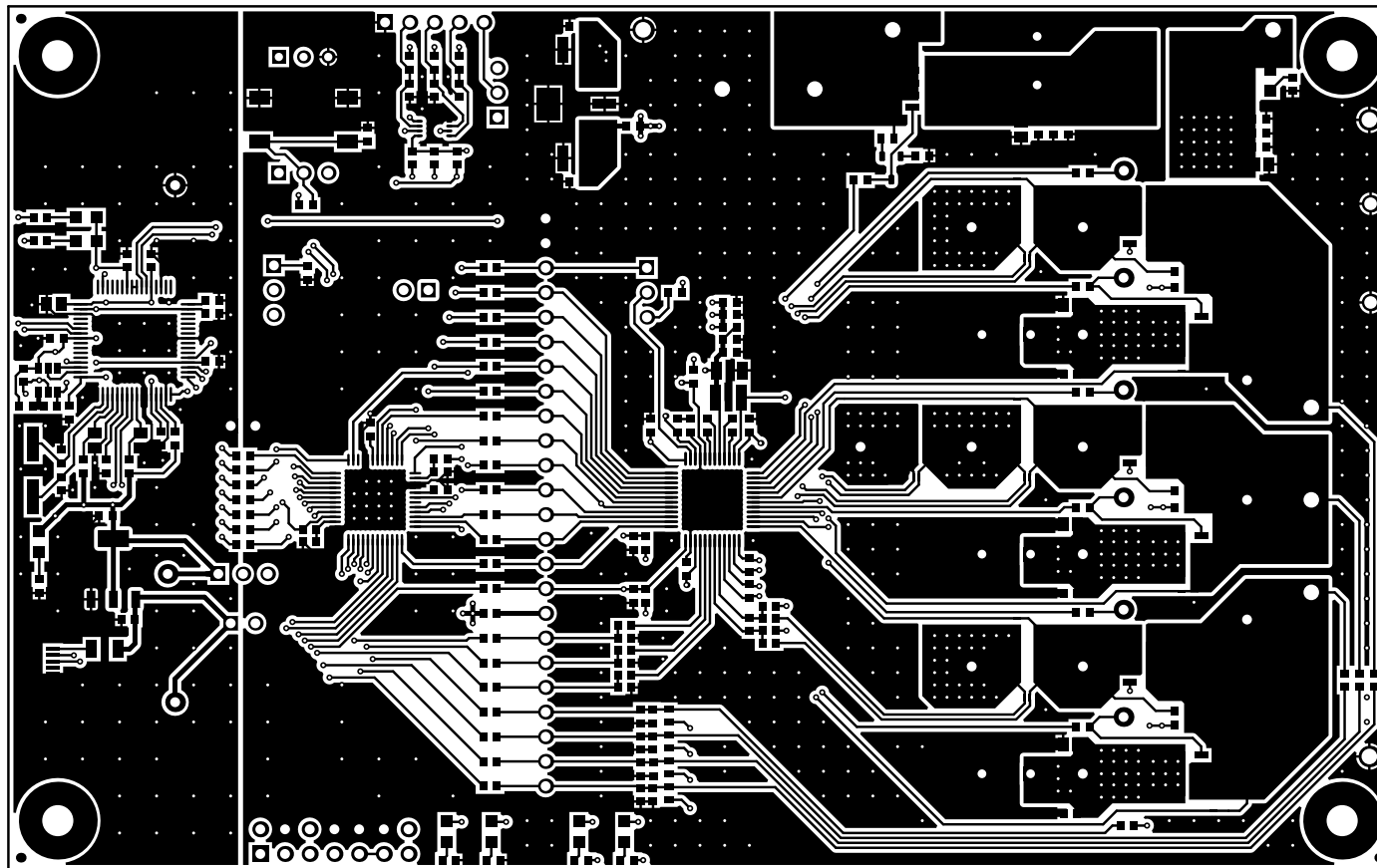


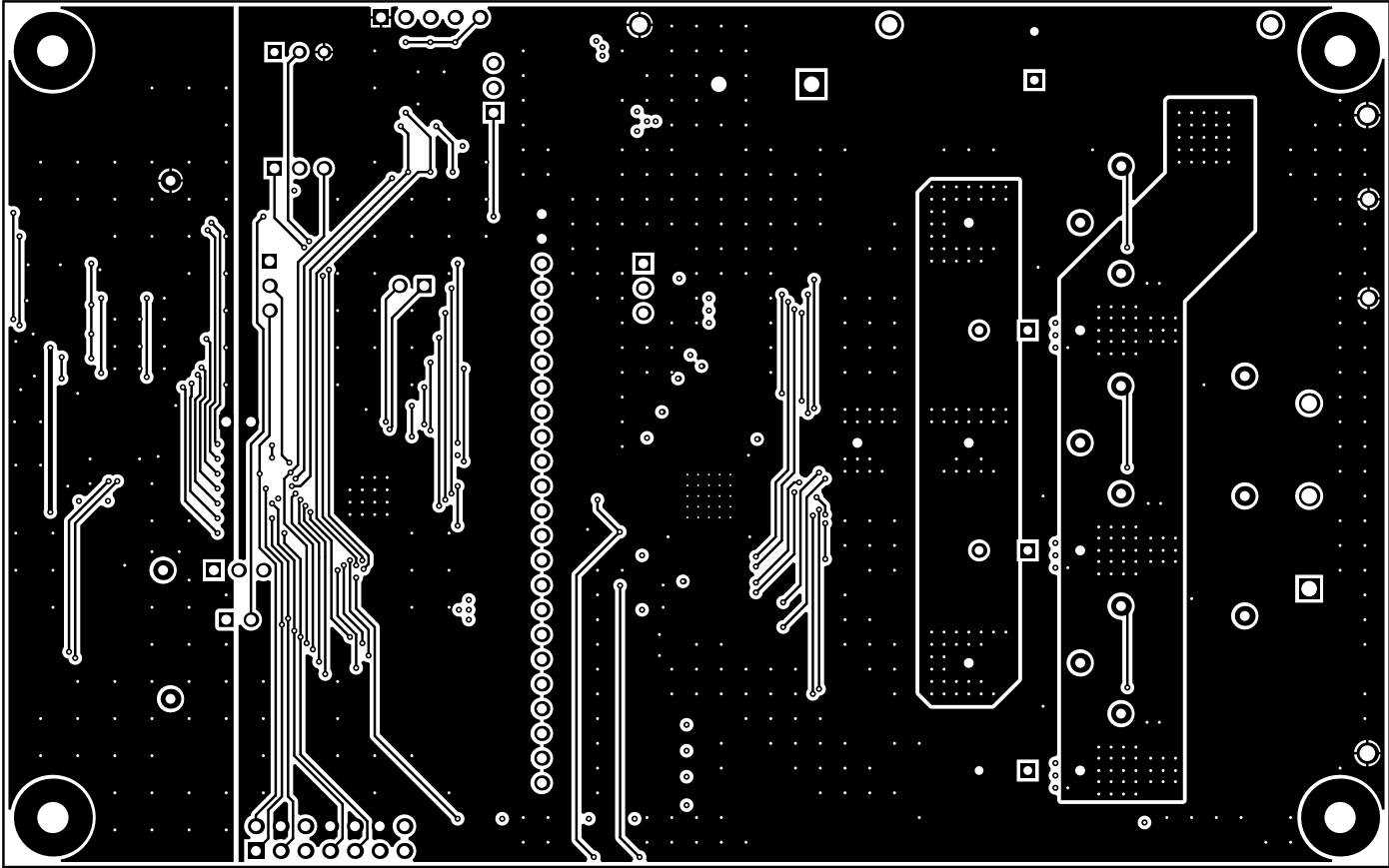
ALL ARTWORK VIEWED FROM TOP SIDE	BOARD #: MDBU014	REV: A	SUN REV: Not In VersionControl
LAYER NAME = Top Overlay			
PLOT NAME = Top Overlay	GENERATED : 4/21/2016 10:11:52 AM	TEXAS INSTRUMENTS	



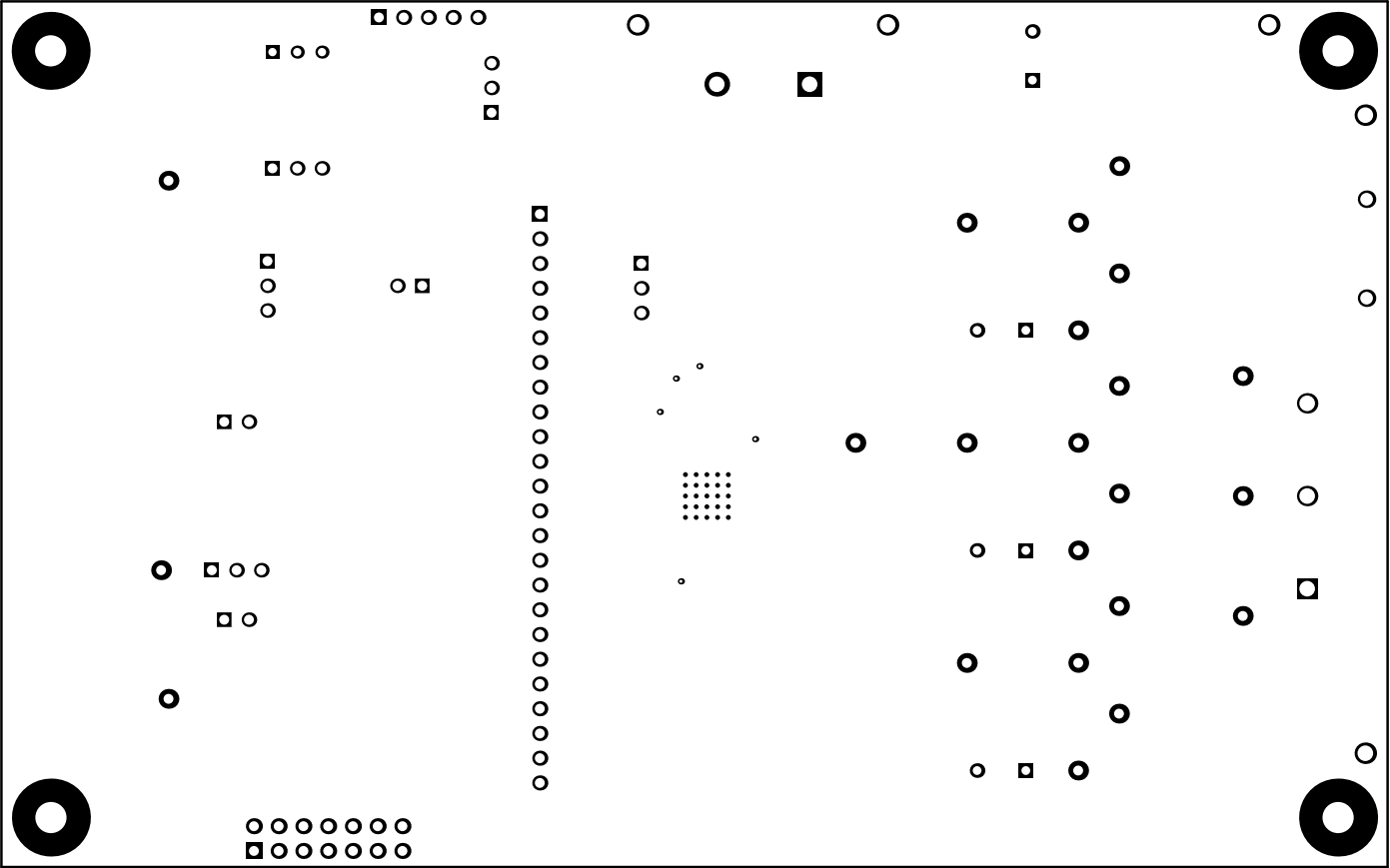
ALL ARTWORK VIEWED FROM TOP SIDE	BOARD #: MDBU014	REV: A	SUN REV: Not In VersionControl
LAYER NAME = Top Solder			
PLOT NAME = Top Solder Mask	GENERATED : 4/21/2016 10:11:56 AM	TEXAS INSTRUMENTS	



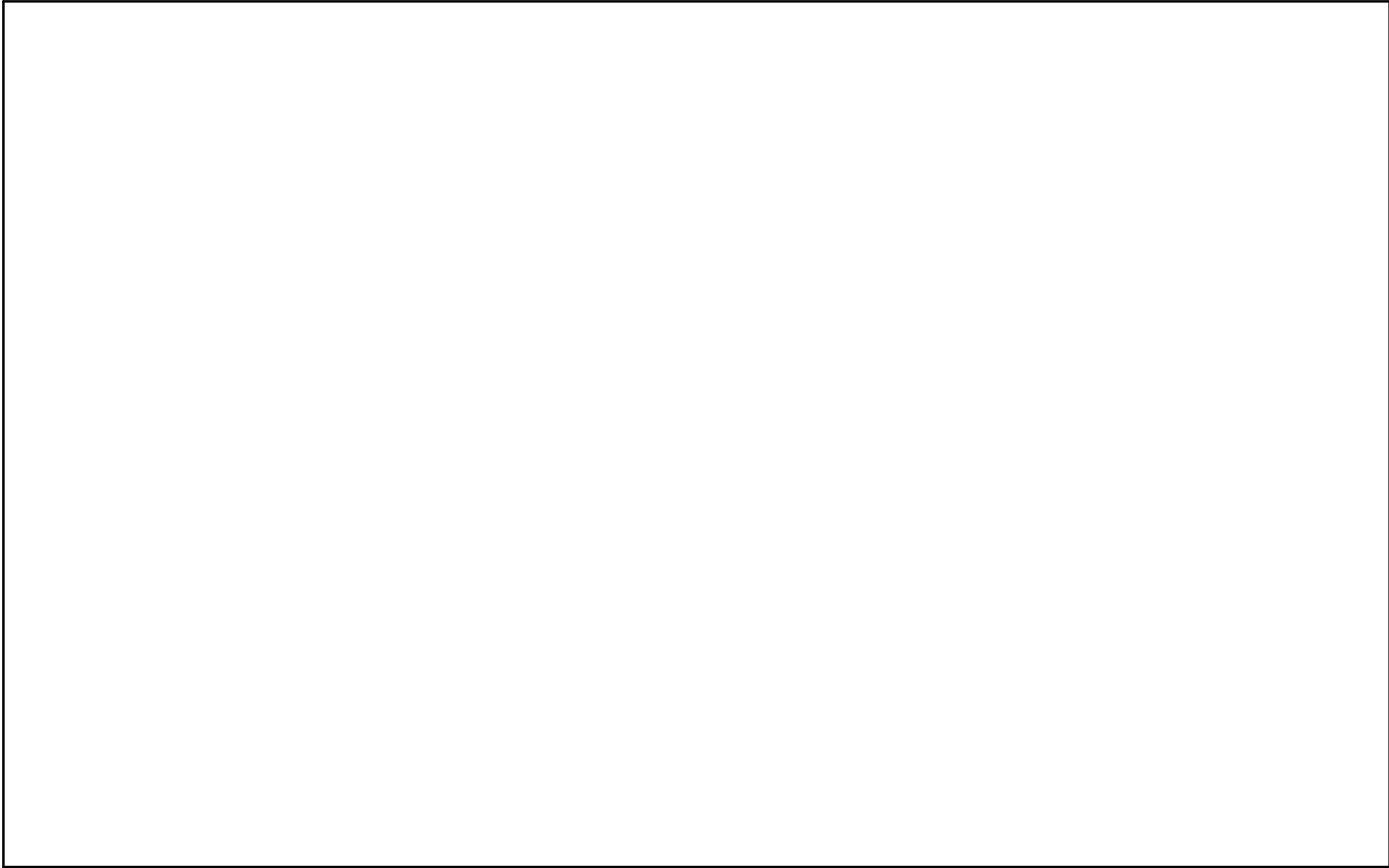
ALL ARTWORK VIEWED FROM TOP SIDE	BOARD #: MDBU014	REV: A	SUN REV: Not In VersionControl
LAYER NAME = Top Layer			
PLOT NAME = Top Layer	GENERATED : 4/21/2016 10:11:59 AM	TEXAS INSTRUMENTS	



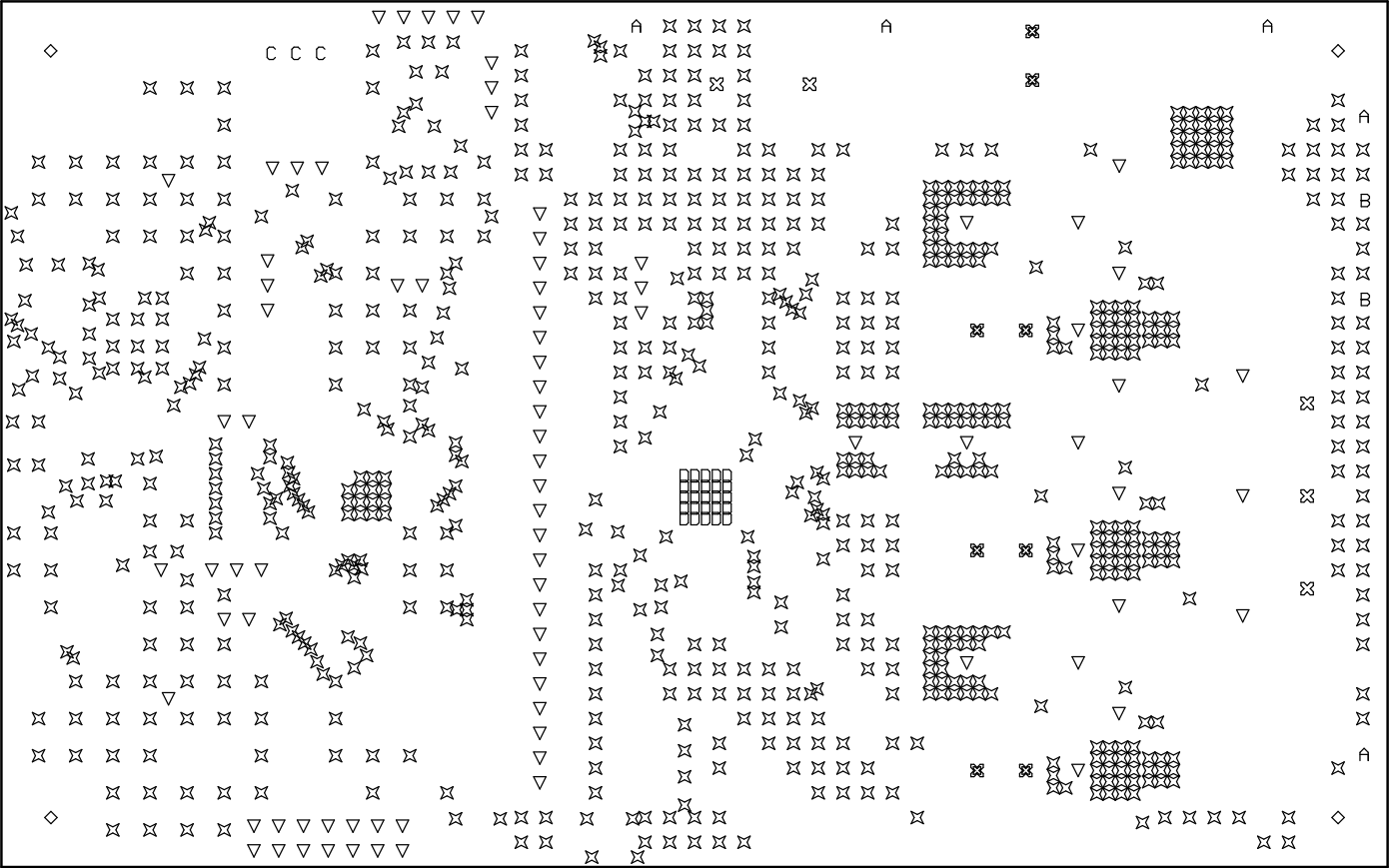
ALL ARTWORK VIEWED FROM TOP SIDE	BOARD #: MDBU014	REV: A	SUN REV: Not In VersionControl
LAYER NAME = Bottom Layer			
PLOT NAME = Bottom Layer	GENERATED : 4/21/2016 10:12:02 AM	TEXAS INSTRUMENTS	



ALL ARTWORK VIEWED FROM TOP SIDE	BOARD #: MDBU014	REV: A	SVN REV: Not In VersionControl
LAYER NAME = Bottom Solder			
PLOT NAME = Bottom Solder Mask	GENERATED : 4/21/2016 10:12:05 AM	TEXAS INSTRUMENTS	

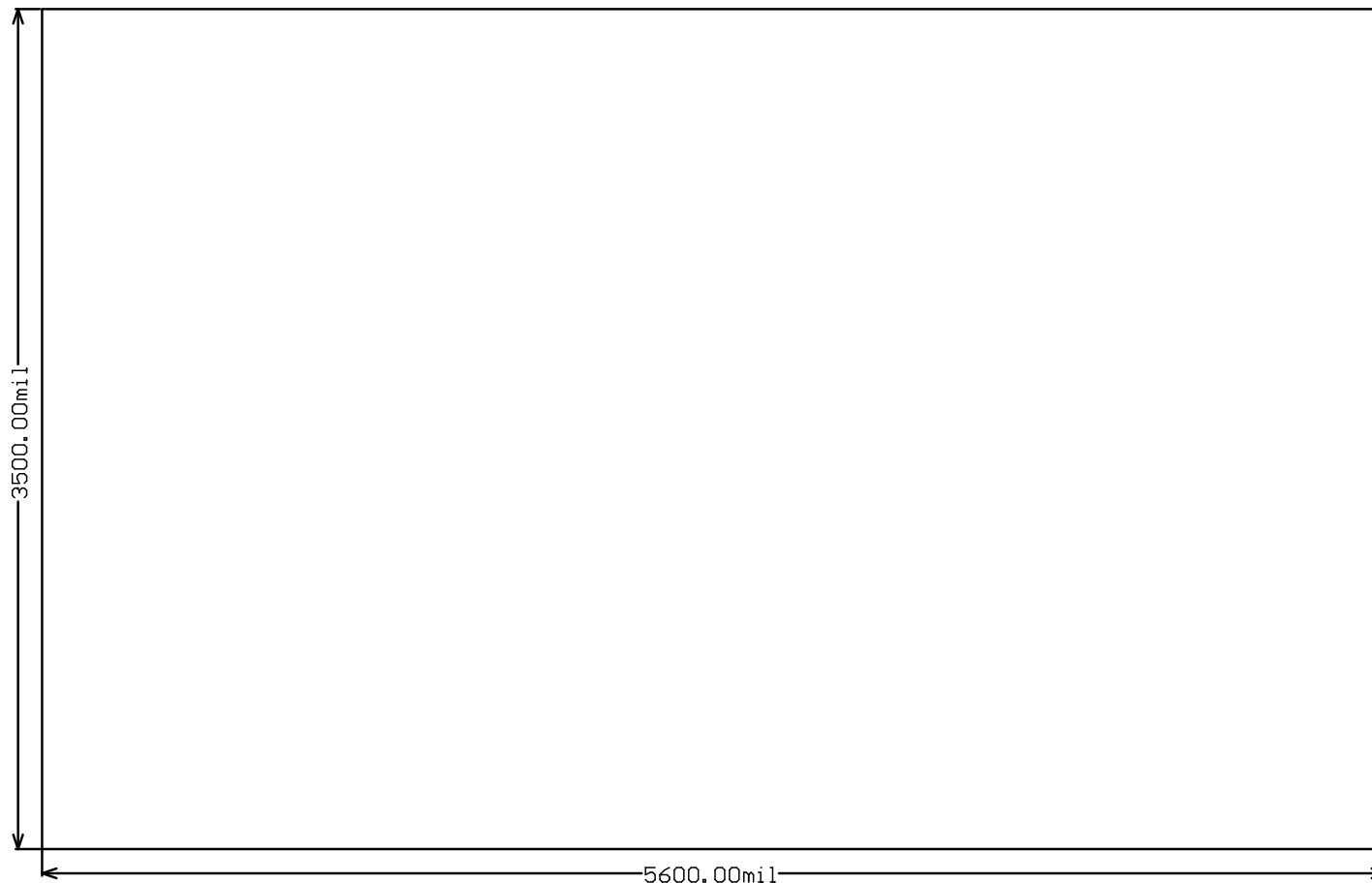


ALL ARTWORK VIEWED FROM TOP SIDE	BOARD #: MDBU014	REV: A	SVN REV: Not In VersionControl
LAYER NAME = Bottom Overlay			
PLOT NAME = Bottom Overlay	GENERATED : 4/21/2016 10:12:09 AM		TEXAS INSTRUMENTS



Symbol	Quantity	Finished Hole Size	Plated	Hole Type
D	25	7.87mil (0.200mm)	PTH	Round
✕	821	12.00mil (0.305mm)	PTH	Round
C	3	33.46mil (0.850mm)	PTH	Round
✕	8	35.43mil (0.900mm)	PTH	Round
▽	86	40.00mil (1.016mm)	PTH	Round
B	2	51.18mil (1.300mm)	PTH	Round
✕	5	62.99mil (1.600mm)	PTH	Round
A	5	63.00mil (1.600mm)	PTH	Round
◇	4	125.98mil (3.200mm)	PTH	Round
	959 Total			

ALL ARTWORK VIEWED FROM TOP SIDE	BOARD #: MDBU014	REV: A	SUN REV: Not In VersionControl
LAYER NAME = Drill Drawing			
PLOT NAME = Drill Drawing	GENERATED : 4/21/2016 10:12:12 AM	TEXAS INSTRUMENTS	



ALL ARTWORK VIEWED FROM TOP SIDE	BOARD #: MDBU014	REV: A	SVN REV: Not In VersionControl
LAYER NAME = M2 Board Dimensions			
PLOT NAME = Board Dimensions	GENERATED : 4/21/2016 10:12:15 AM	TEXAS INSTRUMENTS	