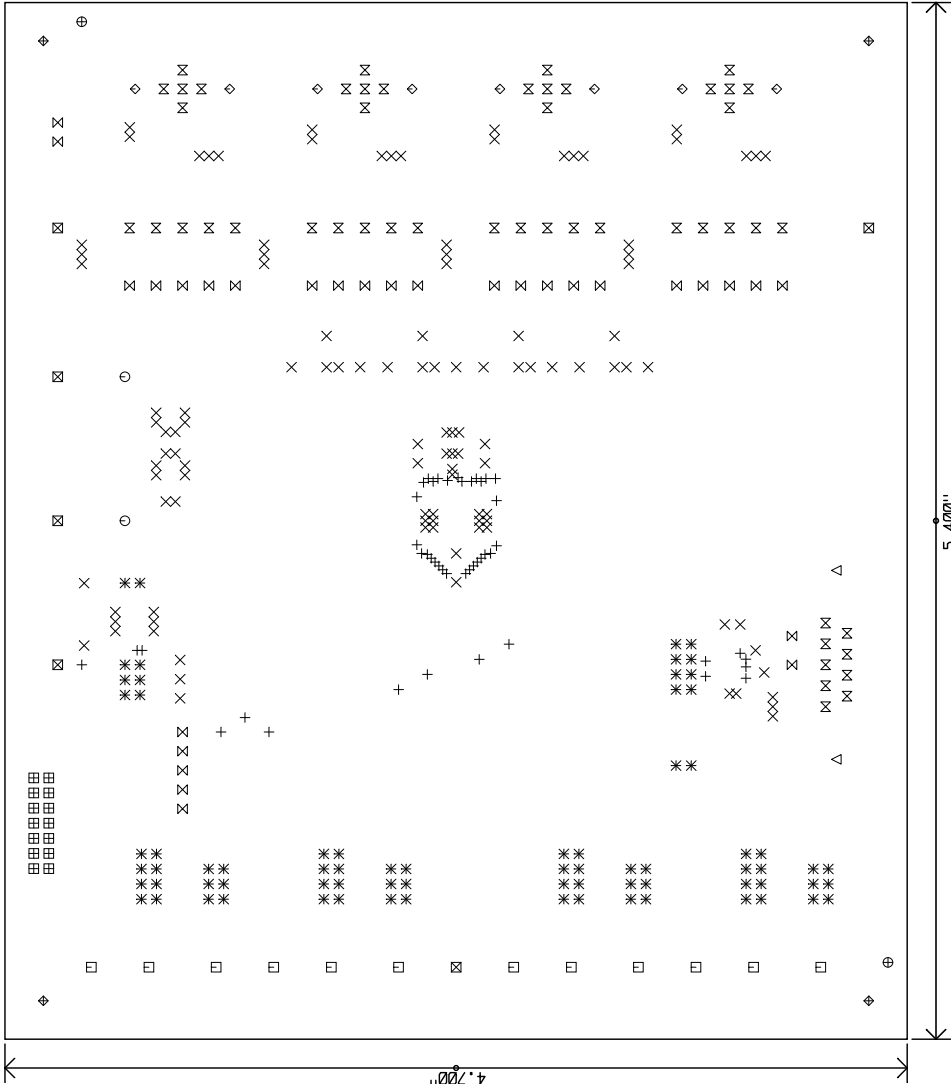


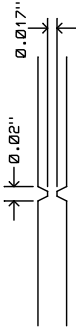
REVISION HISTORY			
ECO	REV	DESCRIPTION	DATE
-	2	1ST PROTOTYPE	9-17-12

SHOWN FROM COMPONENT SIDE

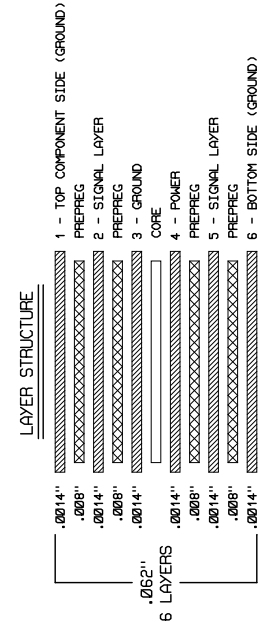


NOTES: UNLESS OTHERWISE SPECIFIED

1. FAB PER IPC-A-600
2. MATERIAL: -LEAD FREE ASSEMBLY COMPLIANT, ISOLA FR-370HR OR EQUIVALENT.
-FINISHED THICKNESS TO BE 0.062" +/- .005".
-TOTAL OF 6 LAYERS WITH 1 OZ. CU ON THE OUTER LAYERS
AND 1 OZ. CU ON THE INNER LAYERS.
-FLAMMABILITY RATING: 94 V-0 MINIMUM.
3. SIZE: CUT TO DIMENSIONS AND TOLERANCES SHOWN
4. DRILLING: -DRILL HOLES PER SCHEDULE. PLATE THROUGH HOLES WITH COPPER, 0.001" THICK MIN.
-ALL HOLE SIZES ARE SPECIFIED AFTER PLATING.
-HOLE LOCATION TOLERANCES ARE +/- 0.003" IN RELATION TO CENTER.
5. FINISH: -SNOBIC USING LPT BOTH SIDES.
-GOLD IMMERSION BOTH SIDES.
-SILKSCREEN BOTH SIDES WITH WHITE NON-CONDUCTIVE INK.
6. DO NOT ALTER ARTWORK e.g. TO ADD LOGO OR DATE CODE.
PAD SIZE MAY BE MODIFIED TO MEET END FINISH.
7. PCBs ARE TO BE ROHS COMPLIANT.
8. SCORING FOR PANELIZED PCB:



SIZE	QTY	SYM	PLATED	TOL
0.010"	46	+	YES	+/-0.003"
0.015"	120	X	YES	+/-0.003"
0.032"	74	*	YES	+/-0.003"
0.035"	14	#	YES	+/-0.003"
0.040"	29	X	YES	+/-0.003"
0.050"	49	X	YES	+/-0.003"
0.066"	12	□	YES	+/-0.003"
0.070"	2	□	NO	+/-0.003"
0.096"	6	⊗	YES	+/-0.003"
3.00mm	8	◇	YES	+/-0.003"
0.120"	2	△	NO	+/-0.003"
0.187"	4	Φ	NO	+/-0.003"
0.215"	2	○	YES	+/-0.003"



UNLESS OTHERWISE SPECIFIED		APPROVALS	
DIMENSIONS ARE IN INCHES TOLERANCES: 0.XX" = +/- 0.01" 0.XXX" = +/- 0.005" INTERPRET DIM AND TOL PER ASME Y14.5M-1994	PCB DES.	KEITH B.	
	APP ENG.	KEITH B.	
	THIRD ANGLE PROJECTION		
		SIZE	IC NO.
		N/A	LTC2874IFE
SCALE = 1:1		DATE: Monday September 17, 2012	
		SHEET 1 OF 1	

1630 McCarthy Blvd.
Milpitas, CA 95035
Phone: (408) 432-1900
Fax: (408) 434-0507
www.linear.com

LTC CONFIDENTIAL
FOR CUSTOMER
USE ONLY

TITLE: FABRICATION DRAWING
QUAD INDUSTRIAL BUS MASTER CONTROLLER

REV. 2