

PCB1

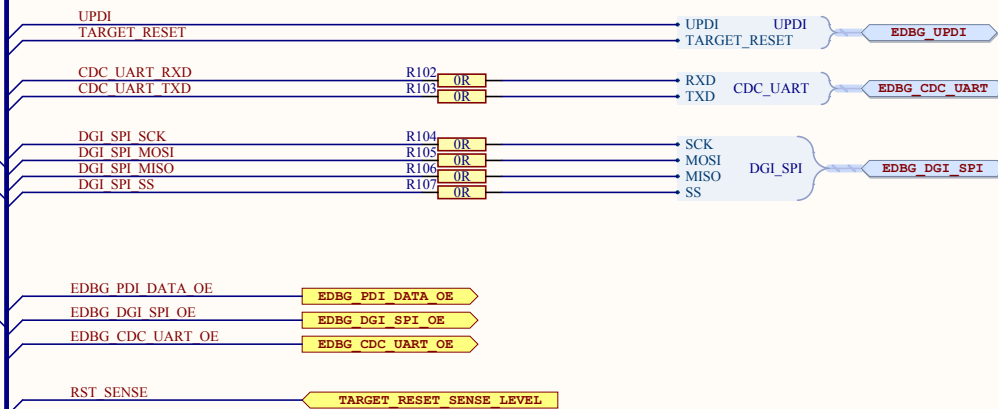
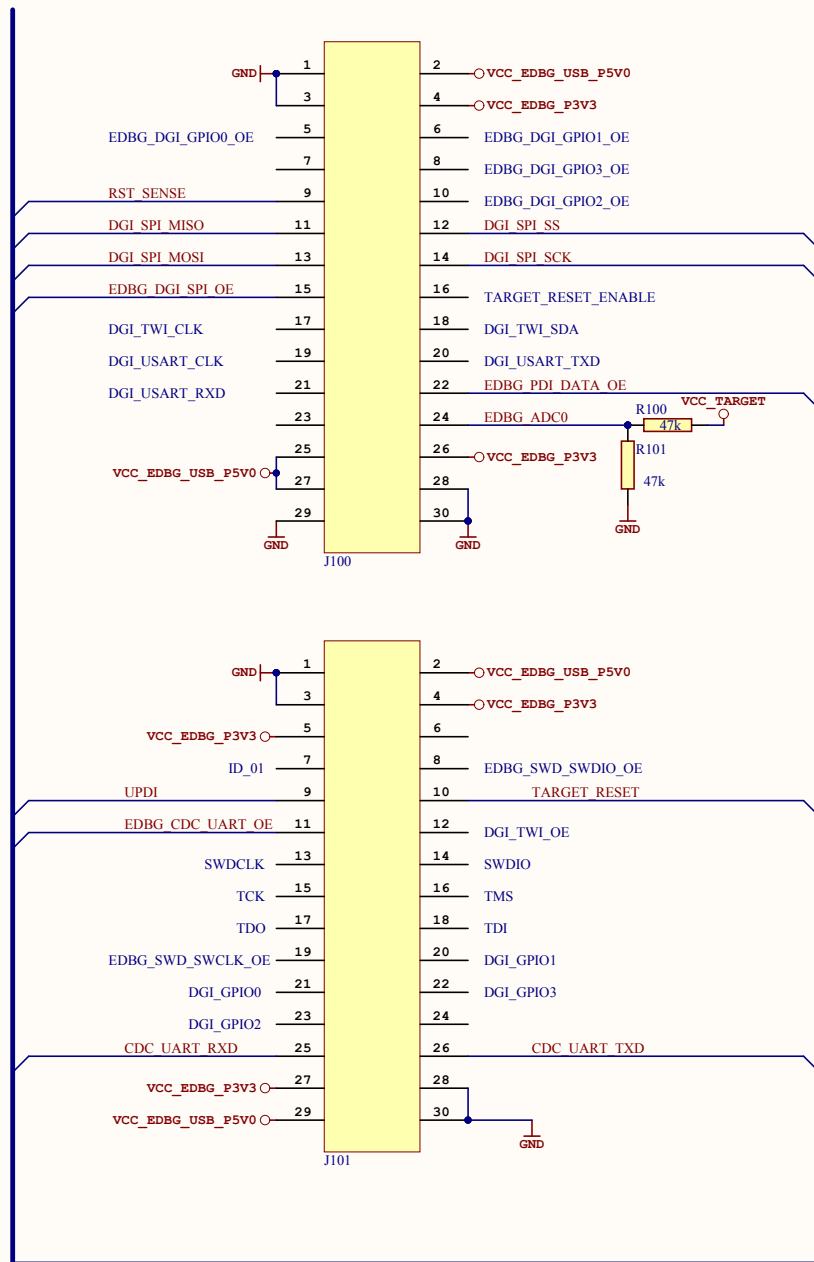
A08-2642  
ATTINY817-QTMOISTD PCB documentation 3

PCBADOC1  
A12-1165

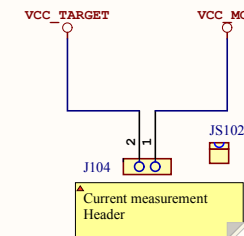
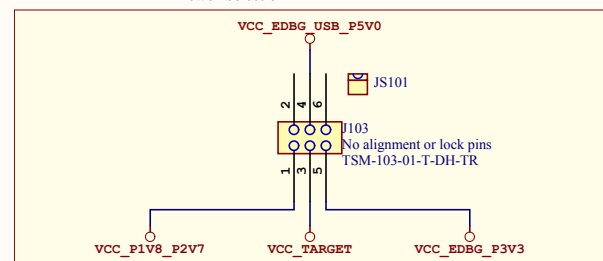
TESTDOC1  
A12-1166

TEST1  
A11-0348

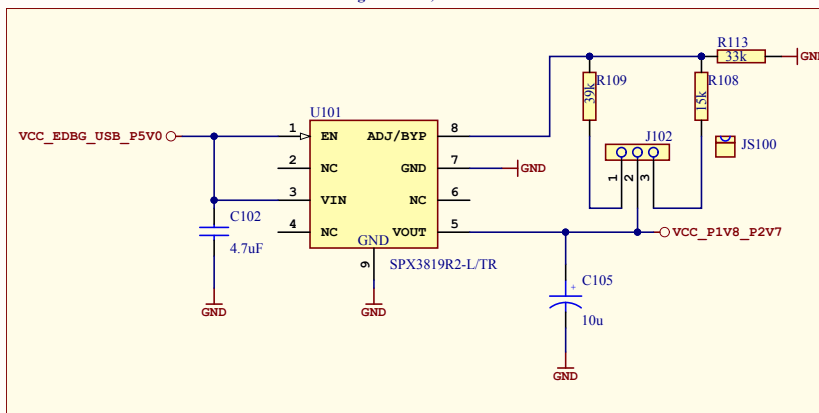
LABEL1  
Product number/revision  
Serial number  
PCBA Label




#### Power Selection

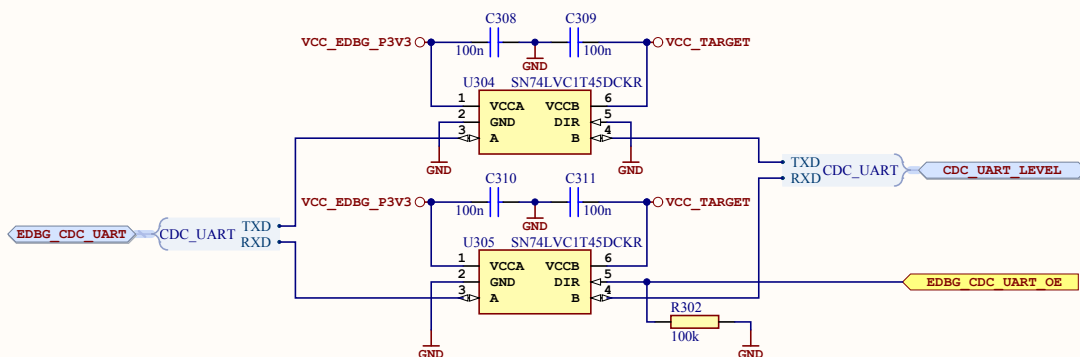
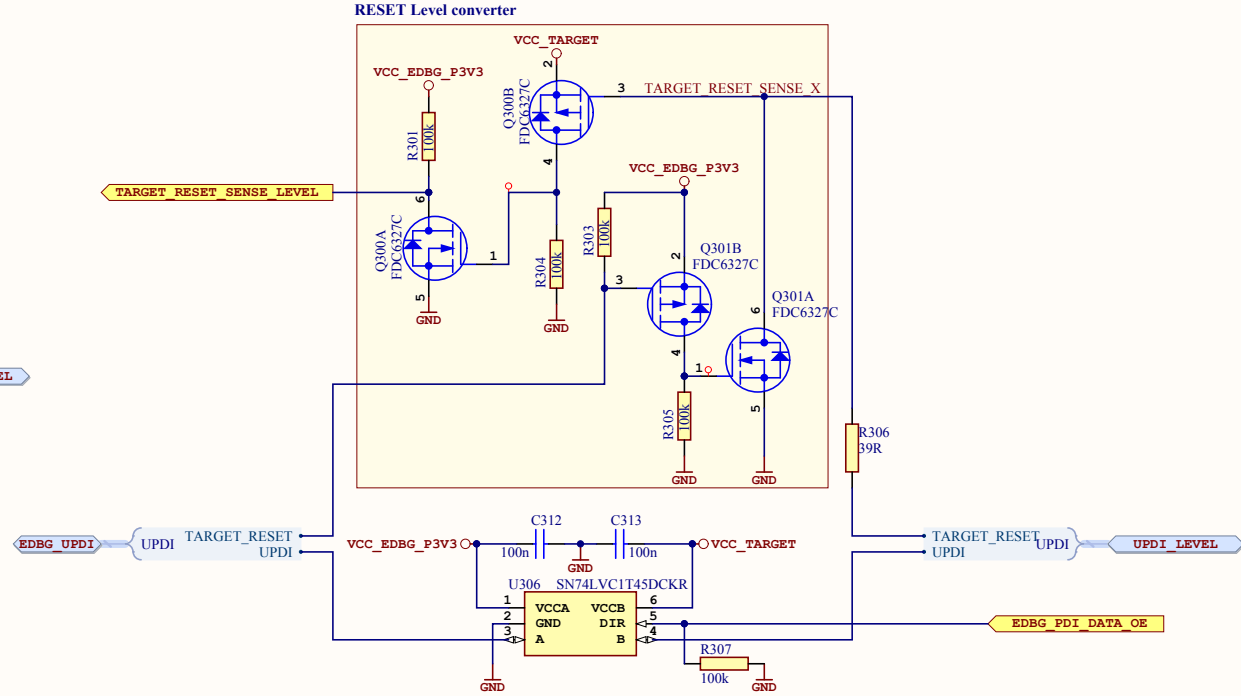
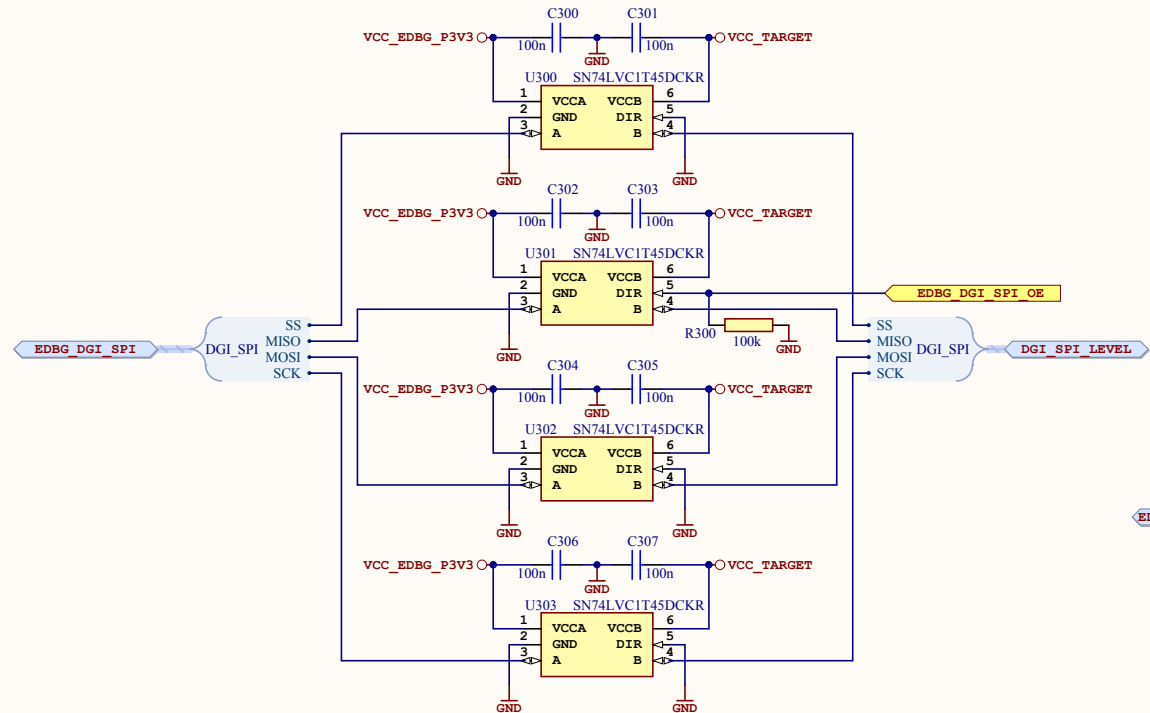


#### Regulator 1.8,2.7 V

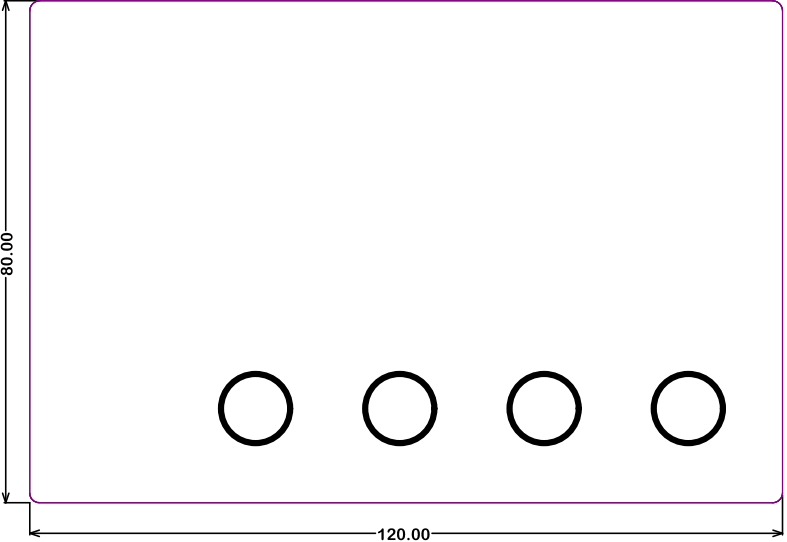


$V = 1.235(1 + (R1/R2))$   
For 2.7V  
Connect 1&2.  
R1=39K, R2=33K  
For 1.8V:  
Connect 2 & 3.  
R1=15K, R2=33K

ATMEL Chennai	*				
KANDANCHAVADI	*				
CHENNAI					
INDIA					
Date:	24-10-2016	16:34:50	PAGE:	2 of 4	
Document number:	A09-2739		Revision	5	
TITLE: EDBG connector					
TINY817_QTMOISTD_BASE_BOARD_EDBG.SchDoc					



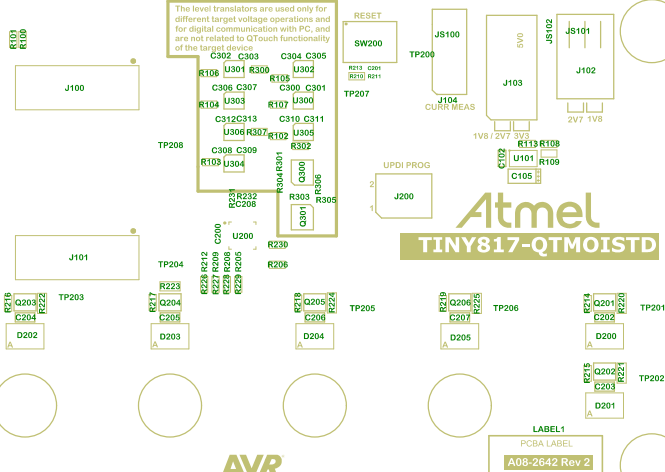




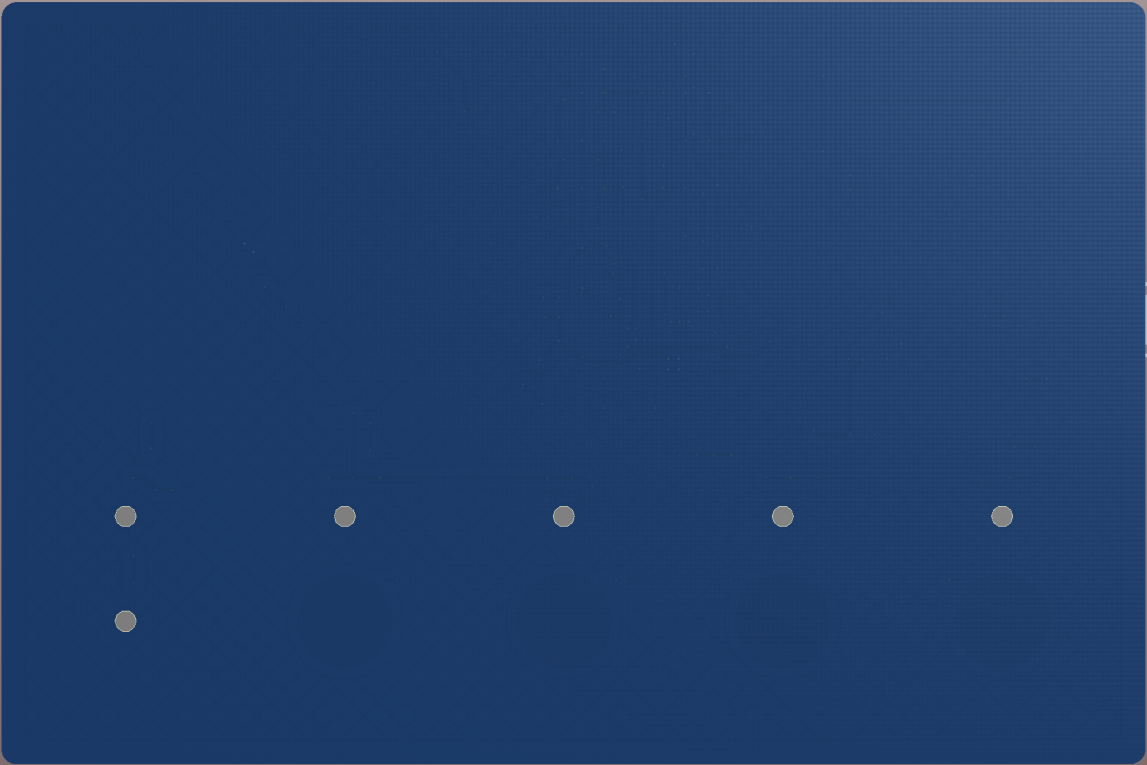




The level translators are used only for different target voltage operations and for digital communication with PC, and are not related to QTouch functionality of the target device



**AVR**





The level translators are used only for different target voltage operations and for digital communication with PC, and are not related to QTouch functionality of the target device

RESET

CURR MEAS

1V8 / 2V7 3V3

2V7 1V8

UPDI PROG

Atmel

TINY817-QTMOISTD

PCBA LABEL

A08-2642 Rev 2

AVR

FCC

Atmel Corp ©2016

