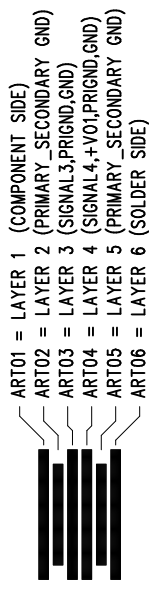
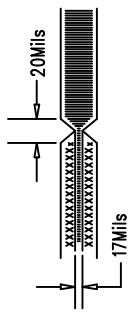
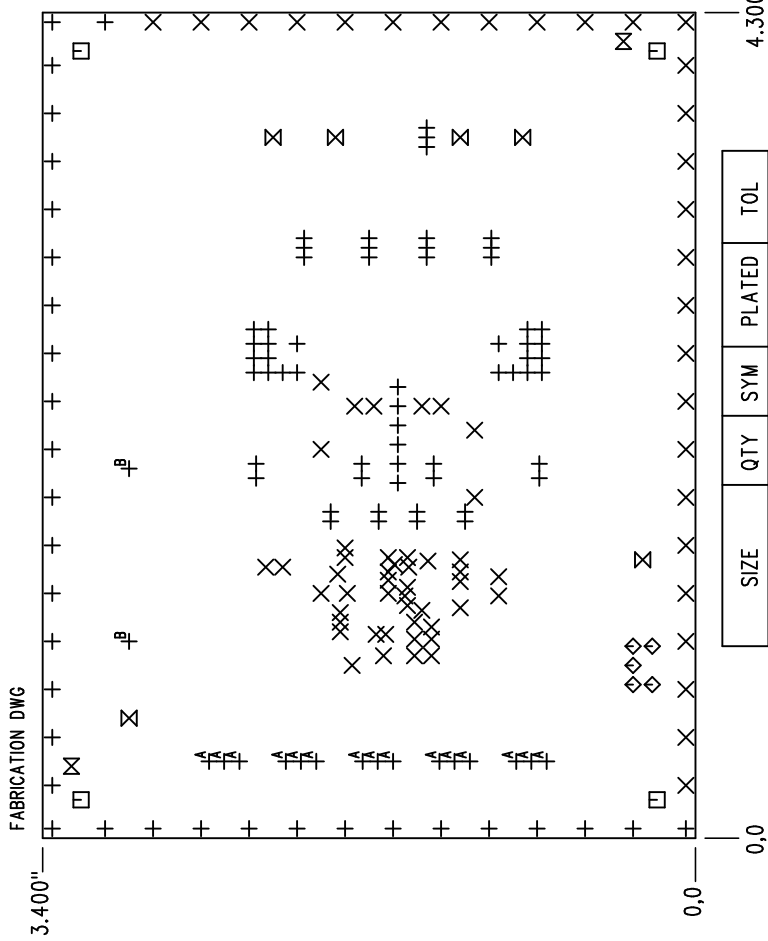


REVISIONS		
REV	APPR	DATE



NOTES: Unless Otherwise Specified:

- 1. PCBs Are To Be RoHS Compliant
- 2. Fab Per IPC-A-600
- 3. Material: Epoxy Fiberglass, NEMA Grade FR-4, 6 Layers  
.062 +/- .005 Inch Thickness With  
2 OZ. Copper Finished On All Outer Layers,  
1 OZ. Copper On All Internal Layers.  
Flammability Rating: 94 V-2 Minimum.
- 4. Size: Cut To Dimensions And Tolerances Shown.
- 5. Finish: SMOBC Using Wet Mask, Or LPI Both Sides, Color Green.  
Silkscreen Both Sides With White Non-conductive Ink.
- 6. Drilling: Drill Holes Per Schedule. Plate Through  
Holes With Copper, .001 Inch Thick Min. All  
Hold Sizes Are Specified After Plating.  
Hole Location Tolerances Are +/- .003" In Relation To Center.
- 7. Do Not Alter Artwork To Add Logo Or Date Code.  
May Modify Pad Size To Meet End Finish.
- 8. Scoring: (Not Required For Prototype Boards)



SIZE	QTY	SYM	PLATED	TOL
25	91	+	YES	+/-0.0
15	74	X	YES	+/-0.0
187	4	□	NO	+/-0.0
35	5	◇	YES	+/-0.0
94	6	⊗	YES	+/-0.0
70	2	⊗	NO	+/-0.0
40	15	⊕ <sup>A</sup>	YES	+/-0.0
189	2	⊕ <sup>B</sup>	YES	+/-0.0

Fabrication Drawing

**APPROVALS**

DRAWN	INIT	DATE
CHECK	k	loc
DESIGN		
ENGR		

1630 McCarthy Blvd.  
Milpitas, CA 95035  
PH: (408)432-1900

TITLE: LTC3862EGN/LTC3862EGN-1  
48V Output Boost Converter

SIZE	REV. A
NONE	

SCALE = NONE	DESIGN #	SHT 1 of 1
--------------	----------	------------