

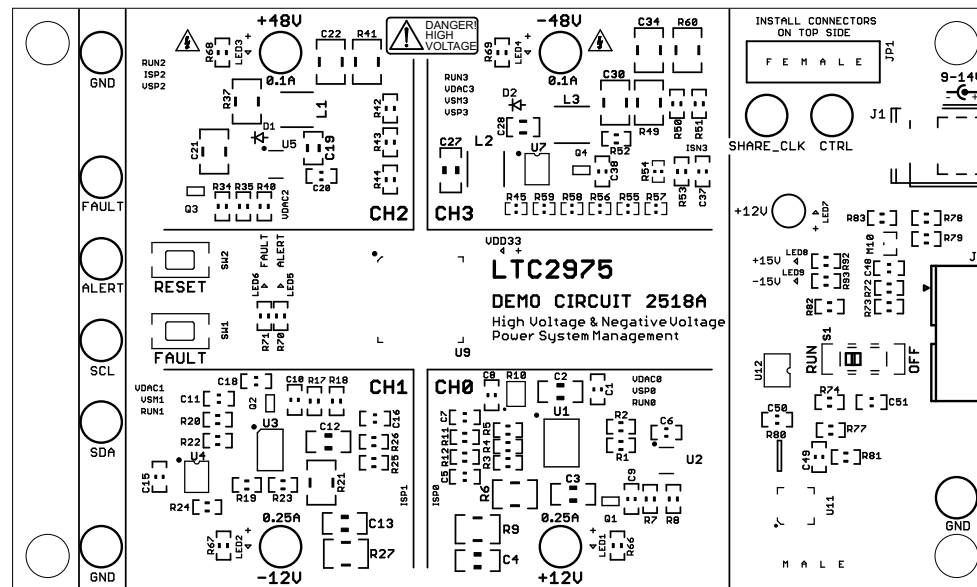
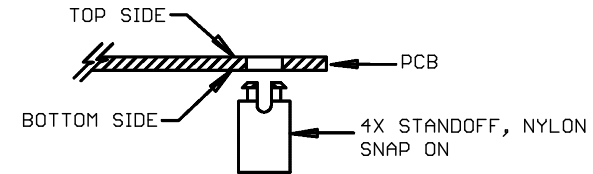
REVISION HISTORY

ECO	REV	DESCRIPTION	APPROVED	DATE
-	1	PRODUCTION	MIKE P.	07/28/2016

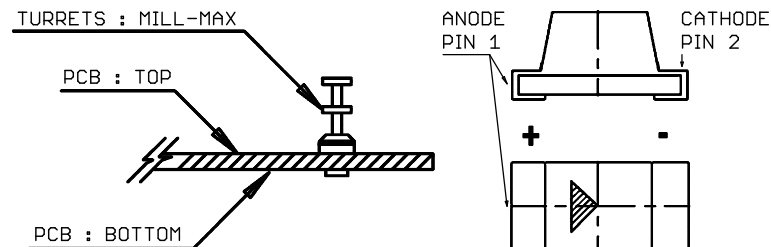
NOTES: UNLESS OTHERWISE SPECIFIED


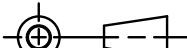
- WORKMANSHIP SHALL BE IN ACCORDANCE WITH IPC-A-610.
- PARTS TO OMIT WILL BE SPECIFIED ON THE BILL OF MATERIALS. MASK THE SOLDER STENCIL WHERE SMT PARTS ARE OMITTED.
- DEPANELIZE BOARDS AFTER ASSEMBLY AND ROUTE-OUT THE BREAKOUT TABS ON 4 SIDES OF THE BOARD EDGE.
- ASSY PROCESS SHALL INCLUDE: REFLOW SOLDER TOP SIDE SMD.
- DO NOT APPLY ANY KIND OF ASSEMBLY STAMP OR QA STAMP ON ANY BOARD.

- INSTALL 4 STANDOFFS AT 4 CORNERS FROM THE BOTTOM SIDE.



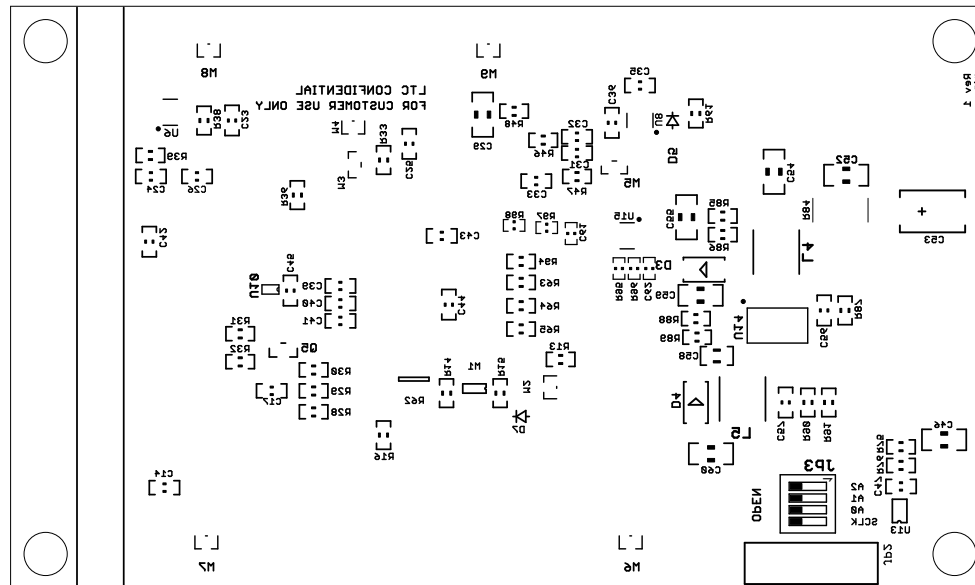
- INSTALL TURRETS and LEDS AS SHOWN BELOW:



UNLESS OTHERWISE SPECIFIED DIMENSIONS ARE IN INCHES TOLERANCES ON ANGLE +/- 1" 0.XX" = +/- 0.01" 0.XXX" = +/- 0.005" INTERPRET DIM AND TOL PER ASME Y14.5M-1994	APPROVALS			1630 MCCARTHY BLVD. MILPITAS, CA 95033 PH: (408) 432-1900 LTC CONFIDENTIAL FOR CUSTOMER USE ONLY		
		NAME				DATE
		PCB DES.	MIKE P.	07-28-16	TITLE: TOP ASSEMBLY DRAWING High & Negative Voltage Power System Management	
		ENG	MIKE P.	07-28-16		
THIRD ANGLE PROJECTION				SIZE N/A	IC NO. LTC2975 DEMO CIRCUIT 2518A	REV 1
						
DO NOT SCALE DRAWING	SCALE: NONE		FILENAME: DC2518A_Rev1		SHEET 1 OF 13	

REVISION HISTORY

ECO	REV	DESCRIPTION	APPROVED	DATE
-	1	PRODUCTION	MIKE P.	07/28/2016

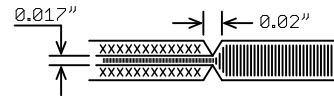


<p>UNLESS OTHERWISE SPECIFIED DIMENSIONS ARE IN INCHES TOLERANCES ON ANGLE +/- 1° 0.XX" = +/- 0.01" 0.XXX" = +/- 0.005" INTERPRET DIM AND TOL PER ASME Y14.5M-1994</p>	APPROVALS		<p>1630 MCCARTHY BLVD. MILPITAS, CA 95033 PH: (408) 432-1900 LTC CONFIDENTIAL FOR CUSTOMER USE ONLY</p>
	NAME	DATE	
	PCB DES.	MIKE P. 07-28-16	
	ENG	MIKE P. 07-28-16	
THIRD ANGLE PROJECTION			<p>TITLE: BOTTOM ASSEMBLY DRAWING High & Negative Voltage Power System Management</p>
DO NOT SCALE DRAWING	SCALE: NONE	FILENAME: DC2518A_Rev1	<p>SIZE: N/A</p> <p>IC NO. LTC2975</p> <p>REV 1</p> <p>DEMOCIRCUIT 2518A</p>

NOTES: UNLESS OTHERWISE SPECIFIED

1. FAB PER IPC-A-600.
2. MATERIAL: EPOXY FIBERGLASS, NEMA GRADE FR-4
FINISHED THICKNESS TO BE 0.062" +/-0.005"
4-LAYER BOARD, 2 OZ. CU ON OUTER LAYERS,
1 OZ. CU ON INNER LAYERS,
FLAMMABILITY RATING: 94 V-2 MINIMUM.
3. SIZE: CUT TO DIMENSIONS AND TOLERANCES SHOWN.
0.00" ARE PRIMARY DATUMS.
4. FINISH: SMOBC USING LPI BOTH SIDES, COLOR BLACK.
ENIG FINISH. LEAD FREE SOLDER CAN BE USED
FOR PROTOTYPE BOARDS.
HIGH DEFINITION WHITE SILKSCREEN.

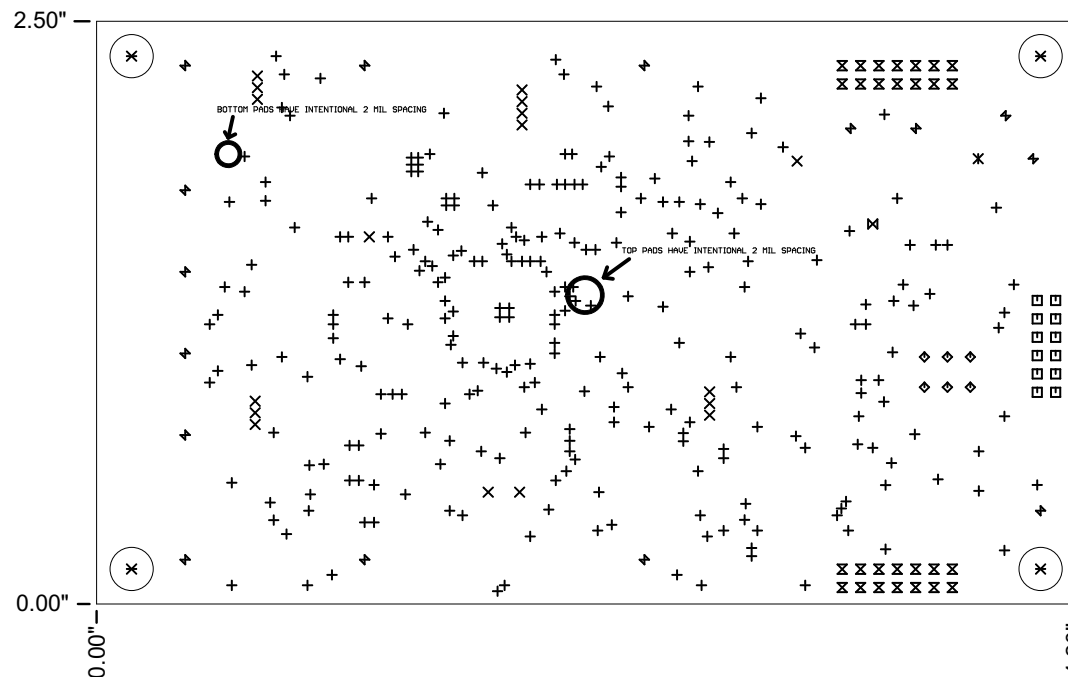
5. DRILL: PLATE THRU ALL HOLES WITH COPPER, 0.001"
THICK MIN. ALL HOLES SHALL BE DRILLED
+/-0.003" WITH RESPECT TO CTR. OF DRILLED
PAD. ALL HOLES FINISHED SIZE AFTER PLATING.
6. DROP ALL UNUSED PADS ON INNER LAYERS.
7. DO NOT ALTER ARTWORK e.g. TO ADD LOGO OR DATE CODE.
PAD SIZE CAN BE MODIFIED TO MEET END FINISH.
8. PCBs ARE TO BE RoHS COMPLIANT.
9. SCORING FOR PANELIZED PCB:



REVISION HISTORY

ECO	REV	DESCRIPTION	APPROVED	DATE
-	1	PRODUCTION	MIKE P.	07/28/2016

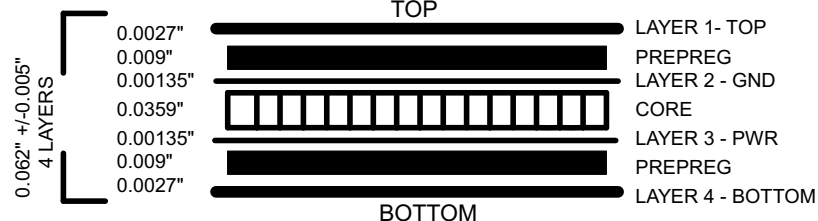
10. PADS WITH 2 MIL SPACING ARE
INTENTIONALLY DESIGNED AS SUCH



DRILL TABLE

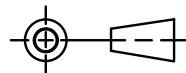
Sym	Nº	Mils	MM	Qty	Plated
+	1	10	0.25	269	YES
x	2	15	0.38	17	YES
□	3	34	0.86	12	YES
◇	4	35	0.90	6	YES
⊗	5	36	0.91	28	YES
⊗	6	64	1.63	1	YES
+	7	94	2.39	13	YES
+	8	106	2.70	2	YES
*	9	126	3.20	1	YES
×	10	185	4.70	4	NOT

LAYER STRUCTURE



UNLESS OTHERWISE SPECIFIED
DIMENSIONS ARE IN INCHES
TOLERANCES ON ANGLE +/- 1°
0.XX" = +/- 0.01"
0.XXX" = +/- 0.005"
INTERPRET DIM AND TOL
PER ASME Y14.5M-1994

THIRD ANGLE PROJECTION



DO NOT SCALE DRAWING

APPROVALS

	NAME	DATE
PCB DES.	MIKE P.	07-28-16
ENG	MIKE P.	07-28-16



1630 MCCARTHY BLVD.
MILPITAS, CA 95033
PH: (408) 432-1900
LTC CONFIDENTIAL
FOR CUSTOMER USE ONLY

TITLE: FABRICATION DRAWING
High & Negative Voltage
Power System Management

SIZE N/A	IC NO. LTC2975 DEMO CIRCUIT 2518A	REV 1
-------------	---	----------

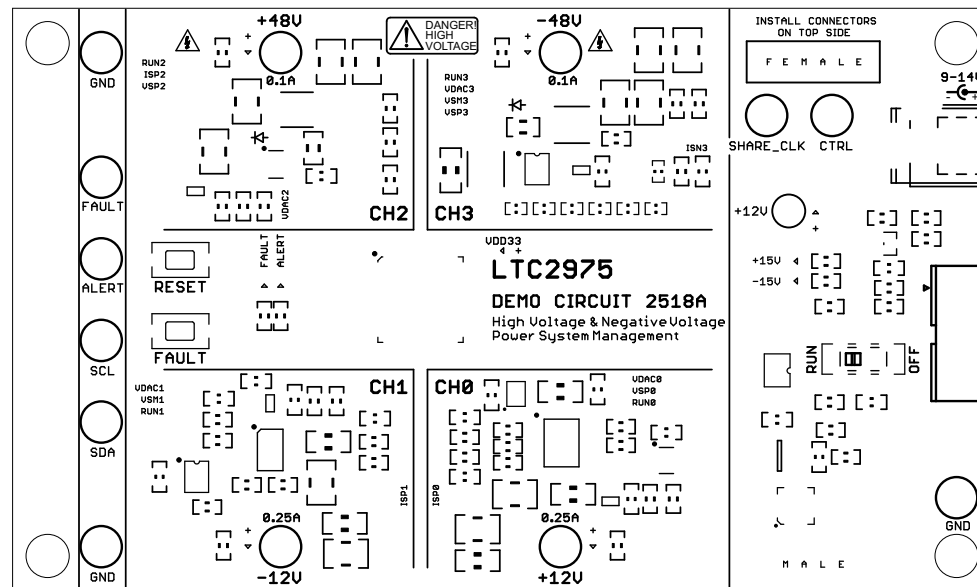
FILENAME: DC2518A_Rev1


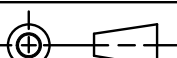
SHEET 3 OF 13

SCALE: NONE

REVISION HISTORY

ECO	REV	DESCRIPTION	APPROVED	DATE
-	1	PRODUCTION	MIKE P.	07/28/2016



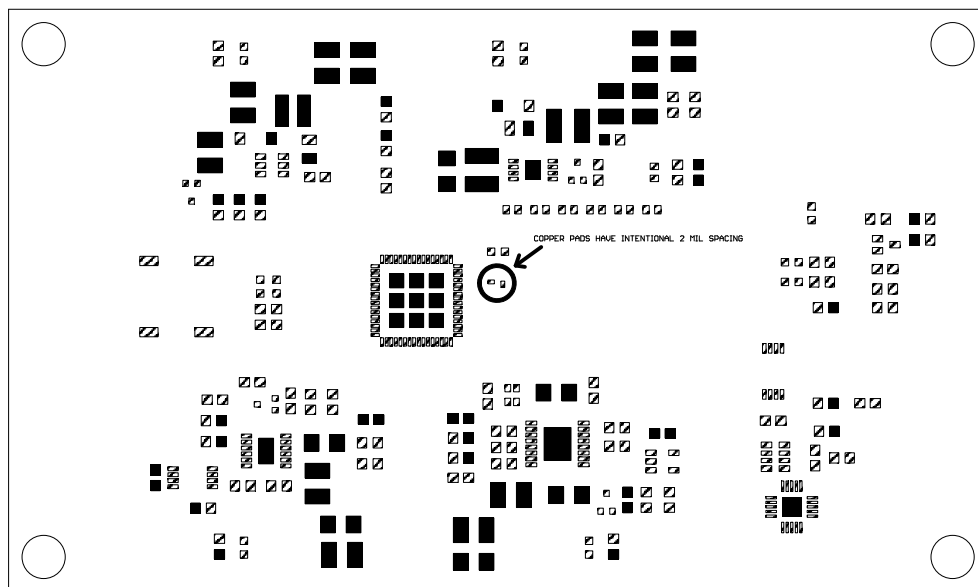
UNLESS OTHERWISE SPECIFIED DIMENSIONS ARE IN INCHES TOLERANCES ON ANGLE +/- 1" 0.XX" = +/- 0.01" 0.XXX" = +/- 0.005" INTERPRET DIM AND TOL PER ASME Y14.5M-1994	APPROVALS		 <div>1630 MCCARTHY BLVD. MILPITAS, CA 95033 PH: (408) 432-1900 LTC CONFIDENTIAL FOR CUSTOMER USE ONLY</div>		
		NAME		DATE	
	PCB DES.	MIKE P.		07-28-16	
	ENG	MIKE P.		07-28-16	
THIRD ANGLE PROJECTION					
					
DO NOT SCALE DRAWING	SCALE: NONE	FILENAME: DC2518A_Rev1	SIZE N/A	IC NO. LTC2975 DEMO CIRCUIT 2518A	REV 1

NOTES: UNLESS OTHERWISE SPECIFIED

1. COPPER PADS WITH 2 MIL SPACING ARE INTENTIONALLY DESIGNED AS SUCH (PASTE MASK OPENING INTENDED TO SHORT PADS TOGETHER)

REVISION HISTORY

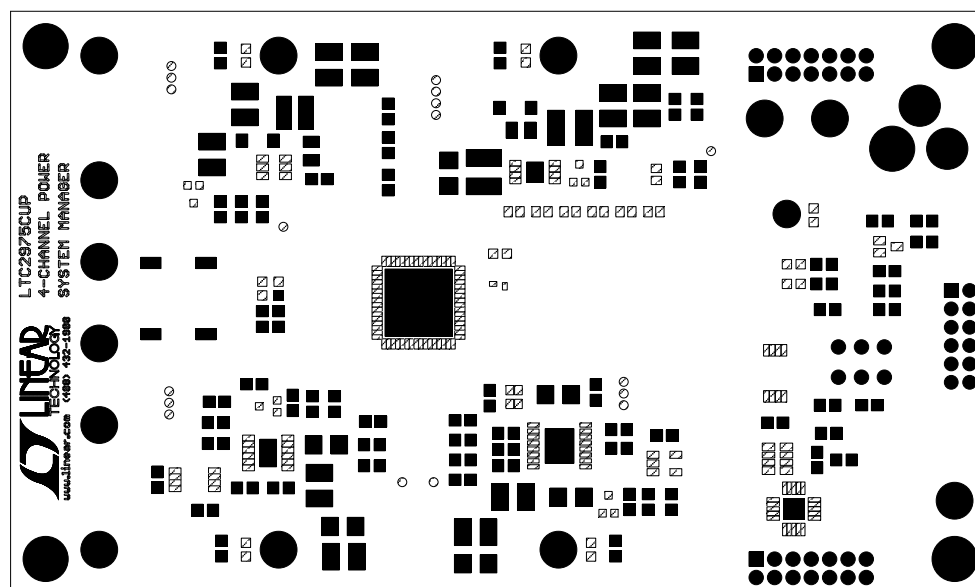
ECO	REV	DESCRIPTION	APPROVED	DATE
-	1	PRODUCTION	MIKE P.	07/28/2016



UNLESS OTHERWISE SPECIFIED DIMENSIONS ARE IN INCHES TOLERANCES ON ANGLE +/- 1° 0.XX" = +/- 0.01" 0.XXX" = +/- 0.005" INTERPRET DIM AND TOL PER ASME Y14.5M-1994	APPROVALS		1630 MCCARTHY BLVD. MILPITAS, CA 95033 PH: (408) 432-1900 LTC CONFIDENTIAL FOR CUSTOMER USE ONLY
	NAME	DATE	
	PCB DES. MIKE P.	07-28-16	
	ENG MIKE P.	07-28-16	
THIRD ANGLE PROJECTION			TITLE: TOP PASTE High & Negative Voltage Power System Management
DO NOT SCALE DRAWING	SCALE: NONE	SIZE N/A IC NO. LTC2975 DEMO CIRCUIT 2518A	REV 1 FILENAME: DC2518A_Rev1 SHEET 5 OF 13

REVISION HISTORY

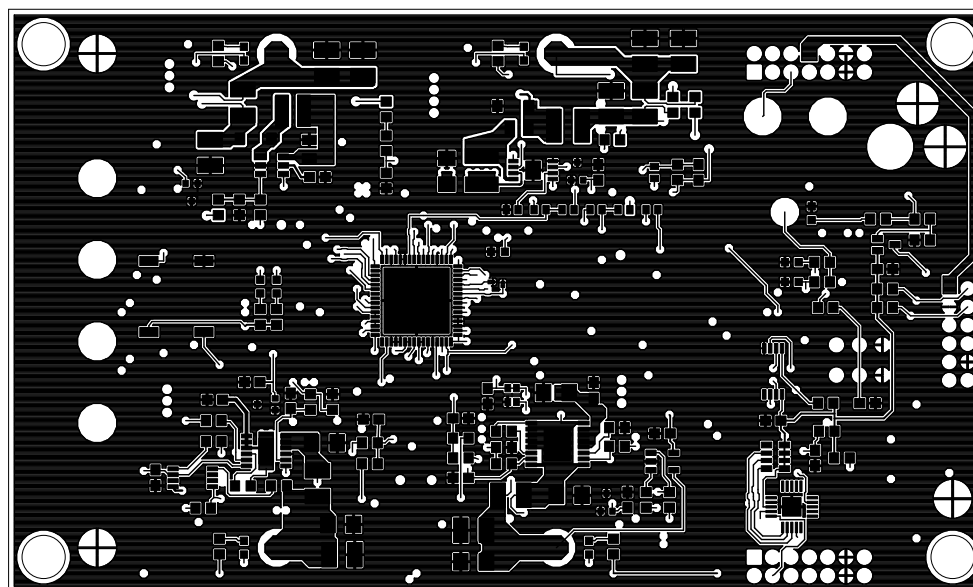
ECO	REV	DESCRIPTION	APPROVED	DATE
-	1	PRODUCTION	MIKE P.	07/28/2016


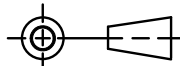


UNLESS OTHERWISE SPECIFIED DIMENSIONS ARE IN INCHES TOLERANCES ON ANGLE +/- 1° 0.XX" = +/- 0.01" 0.XXX" = +/- 0.005" INTERPRET DIM AND TOL PER ASME Y14.5M-1994	APPROVALS			1630 MCCARTHY BLVD. MILPITAS, CA 95033 PH: (408) 432-1900 LTC CONFIDENTIAL FOR CUSTOMER USE ONLY				
		NAME		DATE	TITLE: TOP SOLDERMASK High & Negative Voltage Power System Management			
	PCB DES.	MIKE P.		07-28-16				
	ENG	MIKE P.		07-28-16				
THIRD ANGLE PROJECTION						SIZE N/A	IC NO. LTC2975 DEMO CIRCUIT 2518A	REV 1
DO NOT SCALE DRAWING	SCALE: NONE		FILENAME: DC2518A_Rev1		SHEET 6 OF 13			

REVISION HISTORY

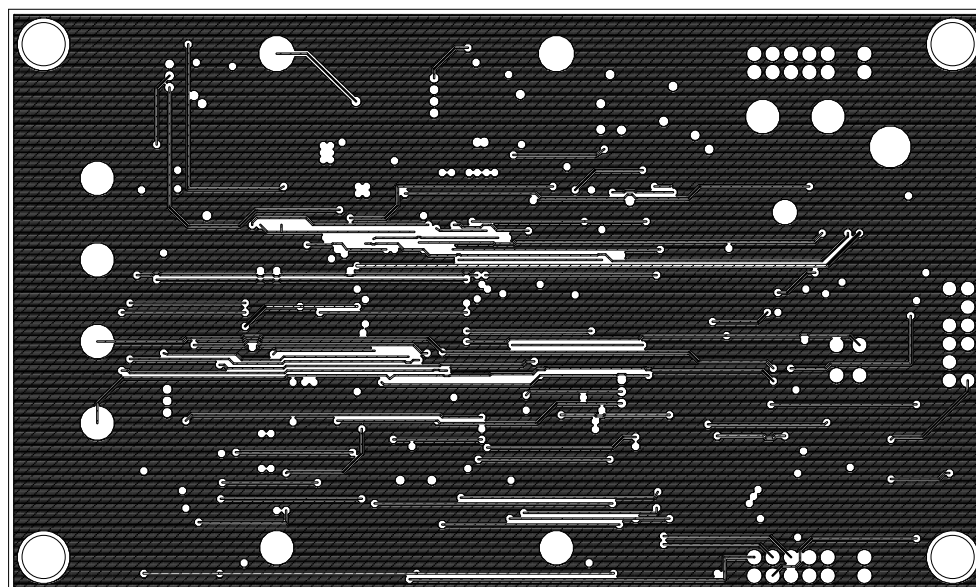
ECO	REV	DESCRIPTION	APPROVED	DATE
-	1	PRODUCTION	MIKE P.	07/28/2016


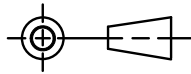


UNLESS OTHERWISE SPECIFIED DIMENSIONS ARE IN INCHES TOLERANCES ON ANGLE +/- 1° 0.XX" = +/- 0.01" 0.XXX" = +/- 0.005" INTERPRET DIM AND TOL PER ASME Y14.5M-1994	APPROVALS		 1630 MCCARTHY BLVD. MILPITAS, CA 95033 PH: (408) 432-1900 LTC CONFIDENTIAL FOR CUSTOMER USE ONLY		
	NAME DATE	PCB DES. ENG		MIKE P. MIKE P.	07-28-16 07-28-16
THIRD ANGLE PROJECTION 			TITLE: 1 - TOP COPPER (SIGNAL) High & Negative Voltage Power System Management		
DO NOT SCALE DRAWING	SCALE: NONE		SIZE N/A	IC NO. LTC2975 DEMO CIRCUIT 2518A	REV 1
FILENAME: DC2518A_Rev1		SHEET 7 OF 13			

REVISION HISTORY

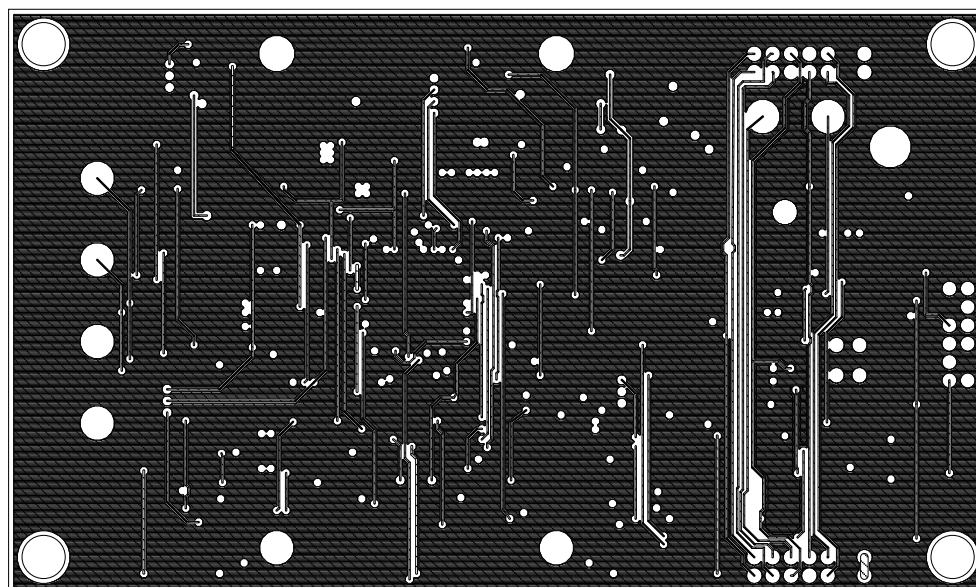
ECO	REV	DESCRIPTION	APPROVED	DATE
-	1	PRODUCTION	MIKE P.	07/28/2016


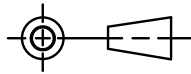


<p>UNLESS OTHERWISE SPECIFIED DIMENSIONS ARE IN INCHES TOLERANCES ON ANGLE +/- 1° 0.XX" = +/- 0.01" 0.XXX" = +/- 0.005" INTERPRET DIM AND TOL PER ASME Y14.5M-1994</p>	APPROVALS		 <p>1630 MCCARTHY BLVD. MILPITAS, CA 95033 PH: (408) 432-1900 LTC CONFIDENTIAL FOR CUSTOMER USE ONLY</p>	
		NAME		DATE
	PCB DES.	MIKE P.		07-28-16
	ENG	MIKE P.		07-28-16
THIRD ANGLE PROJECTION			<p>TITLE: 2 - INNER COPPER (GND) High & Negative Voltage Power System Management</p>	
			<p>SIZE N/A</p>	
DO NOT SCALE DRAWING	SCALE: NONE		<p>IC NO. LTC2975 DEMO CIRCUIT 2518A</p>	
		FILENAME: DC2518A_Rev1	<p>REV 1</p>	
		SHEET 8 OF 13		

REVISION HISTORY

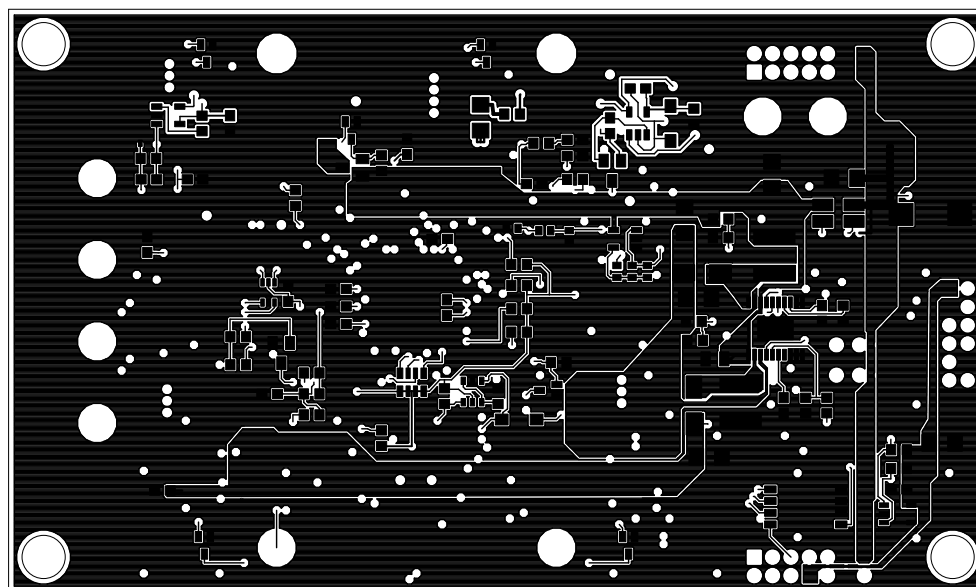
ECO	REV	DESCRIPTION	APPROVED	DATE
-	1	PRODUCTION	MIKE P.	07/28/2016


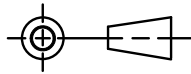


<p>UNLESS OTHERWISE SPECIFIED DIMENSIONS ARE IN INCHES TOLERANCES ON ANGLE +/- 1° 0.XX" = +/- 0.01" 0.XXX" = +/- 0.005" INTERPRET DIM AND TOL PER ASME Y14.5M-1994</p>	APPROVALS		 <p>1630 MCCARTHY BLVD. MILPITAS, CA 95033 PH: (408) 432-1900 LTC CONFIDENTIAL FOR CUSTOMER USE ONLY</p>			
		NAME		DATE		
	PCB DES.	MIKE P.		07-28-16		
	ENG	MIKE P.		07-28-16		
THIRD ANGLE PROJECTION			<p>TITLE: 3 - INNER COPPER (POWER) High & Negative Voltage Power System Management</p>			
				<p>SIZE N/A</p>	<p>IC NO. LTC2975 DEMO CIRCUIT 2518A</p>	<p>REV 1</p>
	DO NOT SCALE DRAWING			SCALE: NONE		<p>FILENAME: DC2518A_Rev1</p>
				SHEET 9 OF 13		

REVISION HISTORY

ECO	REV	DESCRIPTION	APPROVED	DATE
-	1	PRODUCTION	MIKE P.	07/28/2016



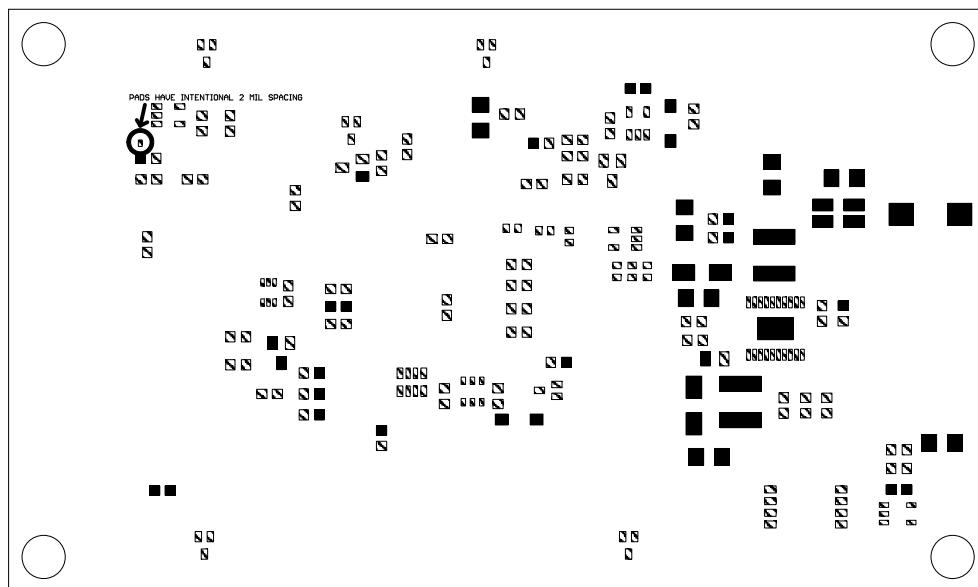
<p>UNLESS OTHERWISE SPECIFIED DIMENSIONS ARE IN INCHES TOLERANCES ON ANGLE +/- 1° 0.XX" = +/- 0.01" 0.XXX" = +/- 0.005" INTERPRET DIM AND TOL PER ASME Y14.5M-1994</p>	APPROVALS		 <p>1630 MCCARTHY BLVD. MILPITAS, CA 95033 PH: (408) 432-1900 LTC CONFIDENTIAL FOR CUSTOMER USE ONLY</p>	
		NAME		DATE
	PCB DES.	MIKE P.		07-28-16
	ENG	MIKE P.		07-28-16
THIRD ANGLE PROJECTION			<p>TITLE: 4 - BOTTOM COPPER (SIGNAL) High & Negative Voltage Power System Management</p>	
			<p>SIZE N/A</p>	
DO NOT SCALE DRAWING	SCALE: NONE		<p>IC NO. LTC2975 DEMO CIRCUIT 2518A</p>	
			<p>REV 1</p>	
	FILENAME: DC2518A_Rev1		SHEET 10 OF 13	

NOTES: UNLESS OTHERWISE SPECIFIED

1. COPPER PADS WITH 2 MIL SPACING ARE INTENTIONALLY DESIGNED AS SUCH (PASTE MASK OPENING INTENDED TO SHORT PADS TOGETHER)

REVISION HISTORY

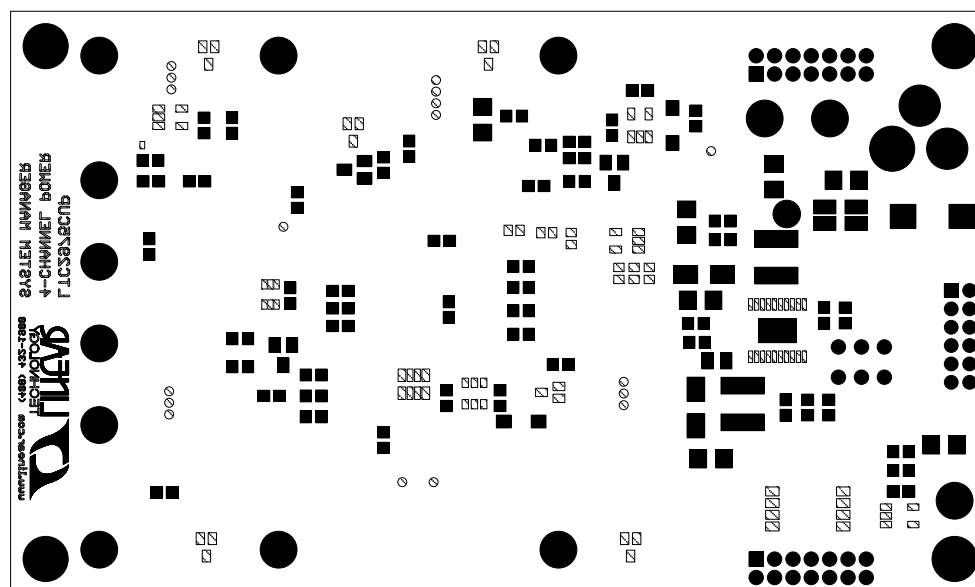
ECO	REV	DESCRIPTION	APPROVED	DATE
-	1	PRODUCTION	MIKE P.	07/28/2016



UNLESS OTHERWISE SPECIFIED DIMENSIONS ARE IN INCHES TOLERANCES ON ANGLE +/- 1° 0.XX" = +/- 0.01" 0.XXX" = +/- 0.005" INTERPRET DIM AND TOL PER ASME Y14.5M-1994	APPROVALS		1630 MCCARTHY BLVD. MILPITAS, CA 95033 PH: (408) 432-1900 LTC CONFIDENTIAL FOR CUSTOMER USE ONLY	
		NAME		DATE
	PCB DES.	MIKE P.		07-28-16
	ENG	MIKE P.		07-28-16
THIRD ANGLE PROJECTION			TITLE: BOTTOM PASTE High & Negative Voltage Power System Management	
			SIZE N/A	
DO NOT SCALE DRAWING	SCALE: NONE		IC NO. LTC2975 DEMO CIRCUIT 2518A	
		FILENAME: DC2518A_Rev1	REV 1 SHEET 11 OF 13	

REVISION HISTORY

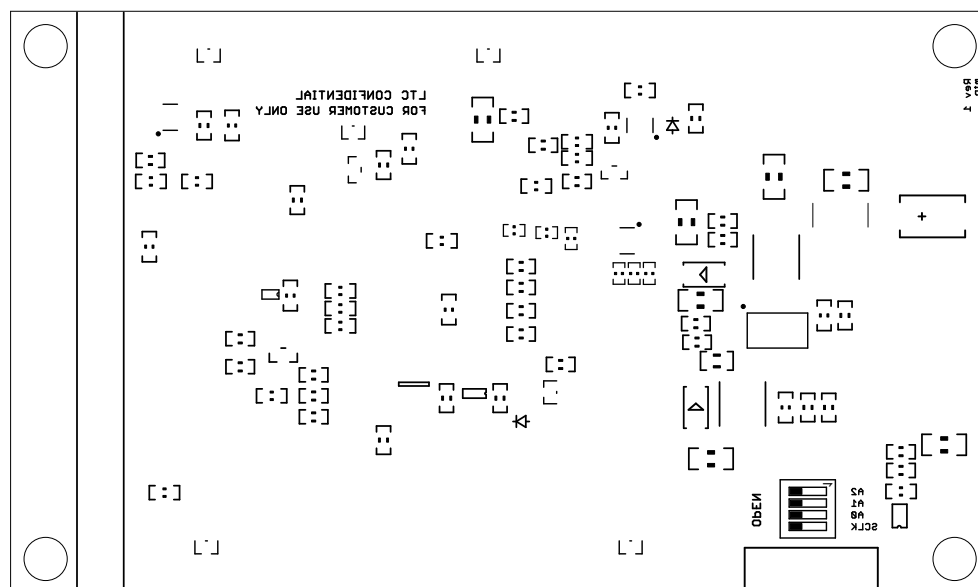
ECO	REV	DESCRIPTION	APPROVED	DATE
-	1	PRODUCTION	MIKE P.	07/28/2016


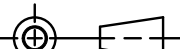


<p>UNLESS OTHERWISE SPECIFIED DIMENSIONS ARE IN INCHES TOLERANCES ON ANGLE +/- 1° 0.XX" = +/- 0.01" 0.XXX" = +/- 0.005" INTERPRET DIM AND TOL PER ASME Y14.5M-1994</p>	<p>APPROVALS</p>		<p>LINEAR TECHNOLOGY</p> <p>1630 MCCARTHY BLVD. MILPITAS, CA 95033 PH: (408) 432-1900 LTC CONFIDENTIAL FOR CUSTOMER USE ONLY</p>
	NAME	DATE	
	PCB DES.	MIKE P. 07-28-16	
	ENG	MIKE P. 07-28-16	
THIRD ANGLE PROJECTION	<p>TITLE: BOTTOM SOLDERMASK High & Negative Voltage Power System Management</p>		<p>SIZE N/A</p>
	<p>IC NO. LTC2975 DEMO CIRCUIT 2518A</p>		
DO NOT SCALE DRAWING	SCALE: NONE		<p>REV 1</p>
FILENAME: DC2518A_Rev1		SHEET 12 OF 13	

REVISION HISTORY

ECO	REV	DESCRIPTION	APPROVED	DATE
-	1	PRODUCTION	MIKE P.	07/28/2016



UNLESS OTHERWISE SPECIFIED DIMENSIONS ARE IN INCHES TOLERANCES ON ANGLE +/- 1° 0.XX" = +/- 0.01" 0.XXX" = +/- 0.005" INTERPRET DIM AND TOL PER ASME Y14.5M-1994	APPROVALS			 <div>1630 MCCARTHY BLVD. MILPITAS, CA 95033 PH: (408) 432-1900 LTC CONFIDENTIAL FOR CUSTOMER USE ONLY</div>		
		NAME	DATE			
	PCB DES.	MIKE P.	07-28-16			
	ENG	MIKE P.	07-28-16			
THIRD ANGLE PROJECTION				TITLE: BOTTOM SILKSCREEN High & Negative Voltage Power System Management		
						
DO NOT SCALE DRAWING	SCALE: NONE	FILENAME: DC2518A_Rev1	SIZE N/A		IC NO. LTC2975 DEMO CIRCUIT 2518A	REV 1
			SHEET 13 OF 14			