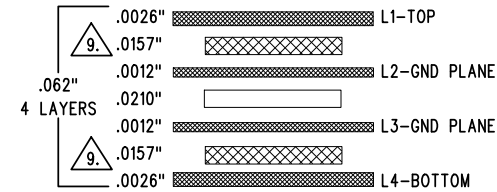


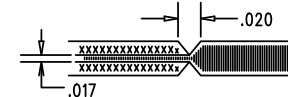
REVISION HISTORY				
ECO	REV	DESCRIPTION	APP. ENG.	DATE
-	4	PRODUCTION	MARK T.	10-26-12

## LAYER STRUCTURE

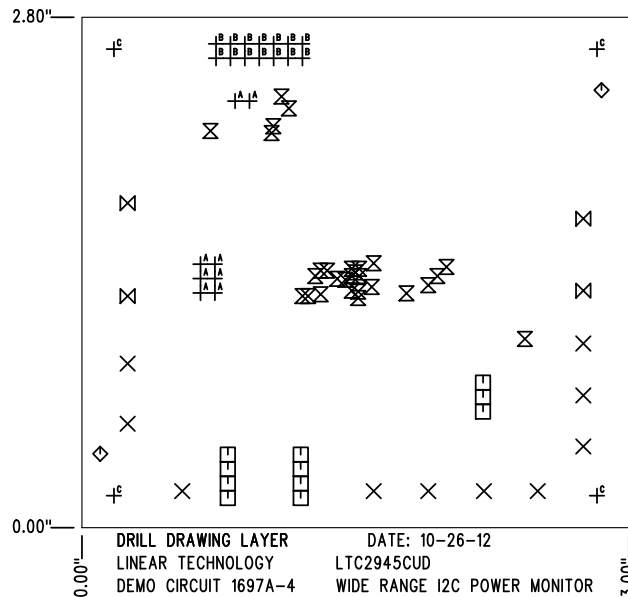


## NOTES: UNLESS OTHERWISE SPECIFIED


- FAB PER IPC-A-600.
- MATERIAL: -LEAD FREE ASSEMBLY COMPLIANT, ISOLA FR-370HR OR EQUIVALENT.  
-FINISHED THICKNESS TO BE 0.062" +/- .005"  
-TOTAL OF 4 LAYERS WITH 2 OZ. CU ON THE OUTER LAYERS  
AND 1 OZ. CU ON THE INNER LAYERS.  
-FLAMMABILITY RATING: 94 V-0 MINIMUM.
- SIZE: CUT TO DIMENSIONS AND TOLERANCES SHOWN.  
0.00" ARE PRIMARY DATUMS.
- DRILLING: -DRILL HOLES PER SCHEDULE. PLATE THROUGH  
HOLES WITH COPPER, 0.001" THICK MIN.  
-ALL HOLE SIZES ARE SPECIFIED AFTER PLATING.  
-HOLE LOCATION TOLERANCES ARE +/-0.003"  
IN RELATION TO CENTER
- FINISH: -SMOBC USING LPI BOTH SIDES, COLOR GREEN.  
-GOLD IMMERSION BOTH SIDES.  
-FOR SILKSCREEN: BOTH SIDES USE WHITE NON-CONDUCTIVE INK.
- DO NOT ALTER ARTWORK e.g. TO ADD LOGO OR DATE CODE.  
PAD SIZE CAN BE MODIFIED TO MEET END FINISH.
- PCBS ARE TO BE RoHS COMPLIANT.
- SCORING FOR PANELIZED PCB:



9. SUBJECT TO CHANGE BY MANUFACTURER, DEPENDING ON  
DIELECTRIC CONSTANT DEVIATIONS. PLEASE CONSULT LTC.



SIZE	QTY	SYM	PLATED	TOL
0.063	10	✕	YES	+/-0.003"
0.031	11	□	YES	+/-0.003"
0.07	2	◇	NO	+/-0.003"
0.01	28	⊗	YES	+/-0.003"
0.094	4	⊗	YES	+/-0.003"
0.034	8	+ <sup>A</sup>	YES	+/-0.003"
0.035	14	+ <sup>B</sup>	YES	+/-0.003"
0.19	4	+ <sup>C</sup>	NO	+/-0.003"

UNLESS OTHERWISE SPECIFIED		APPROVALS		 <b>LINEAR TECHNOLOGY</b>		1630 MCCARTHY BLVD MILPITAS, CA 95035 PH: (408)432-1900 <a href="http://www.linear.com">www.linear.com</a> LTC CONFIDENTIAL- FOR CUSTOMER USE ONLY	
DIMENSIONS ARE IN INCHES TOLERANCES: 0.XX" = ± 0.01" 0.XXX" = ± 0.005" INTERPRET DIM AND TOL PER ASME Y14.5M-1994 THIRD ANGLE PROJECTION		PCB DES.	KIM T.				
		APP ENG.	MARK T.	TITLE: FABRICATION DRAWING			
				WIDE RANGE I2C POWER MONITOR			
				SIZE N/A	IC NO. LTC2945CUD DEMO CIRCUIT 1697A	REV 4	
		SCALE = NONE		FILENAME: DC1697A-4.PCB		SHT 1 OF 1	