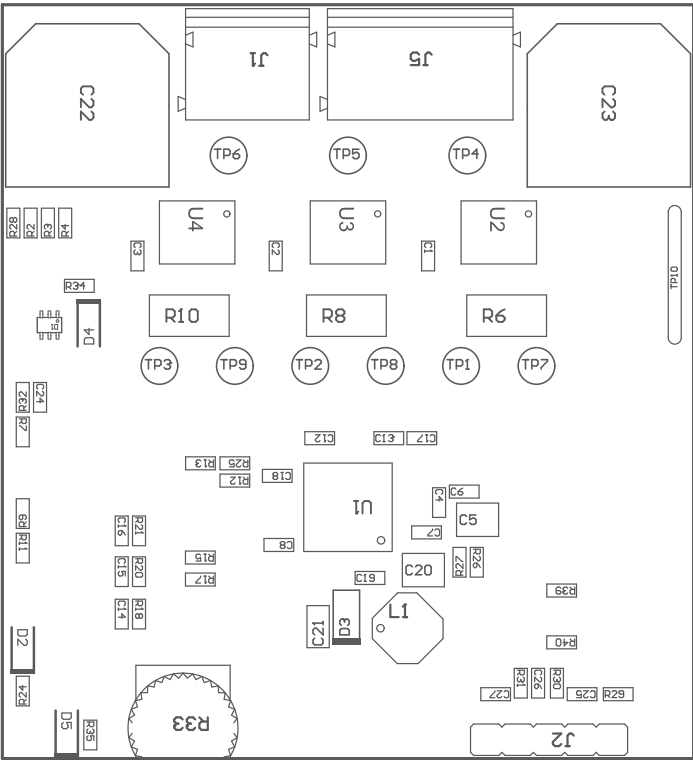


ZZ1 ■ Install label in silkscreened box after final wash. Text shall be 8 pt font. Text shall be per the Label Table in the PDF schematic.

ZZ2 ■ These assemblies are ESD sensitive, ESD precautions shall be observed.

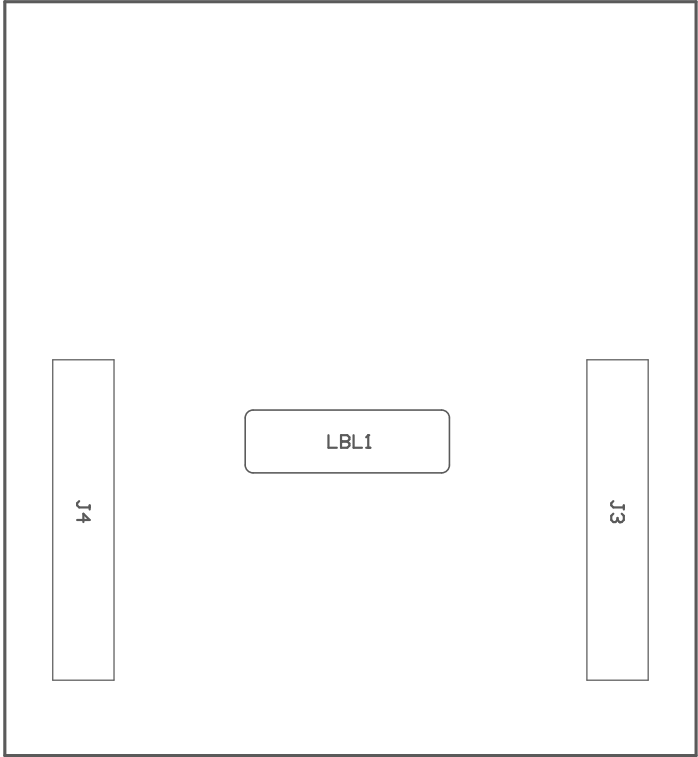
ZZ3 ■ These assemblies must be clean and free from flux and all contaminants. Use of no clean flux is not acceptable.

ZZ4 ■ These assemblies must comply with workmanship standards IPC-A-610 Class 2, unless otherwise specified.



COMPONENTS MARKED 'DNP' SHOULD NOT BE POPULATED.
ASSEMBLY VARIANT: 001

| | | | |
|----------------------------------|----------------------------------|--------|--------------------------------|
| PCB VIEWED FROM TOP SIDE | BOARD #: MDBU017 | REV: A | SUN REV: Not In VersionControl |
| | TID #: N/A | | |
| PLOT NAME = Top Assembly Drawing | GENERATED : 2/15/2017 4:42:30 PM | | TEXAS INSTRUMENTS |



COMPONENTS MARKED 'DNP' SHOULD NOT BE POPULATED.
ASSEMBLY VARIANT: 001

| | | | |
|-------------------------------------|----------------------------------|--------|--------------------------------|
| PCB VIEWED FROM BOTTOM SIDE | BOARD #: MDBU017 | REV: A | SVN REV: Not In VersionControl |
| | TID #: N/A | | |
| PLOT NAME = Bottom Assembly Drawing | GENERATED : 2/15/2017 4:42:31 PM | | TEXAS INSTRUMENTS |