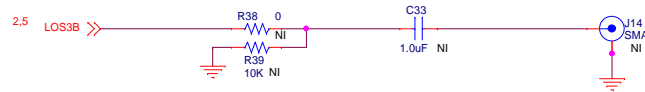
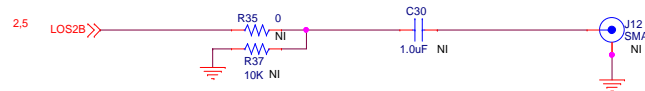
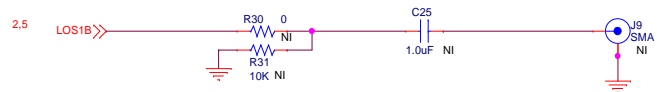
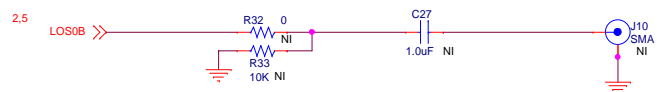
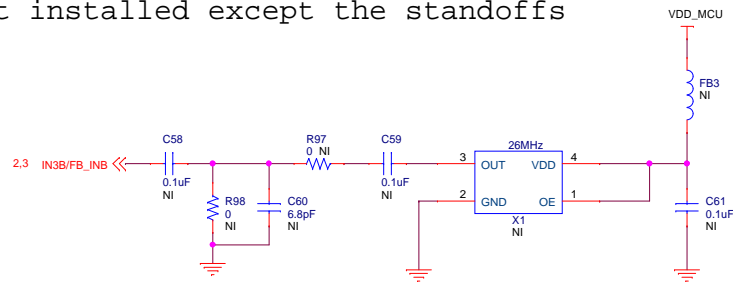
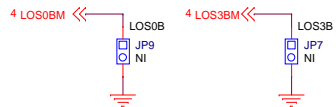
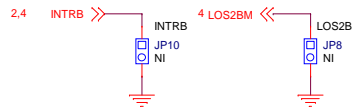
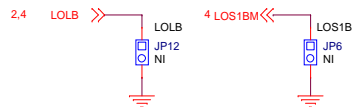
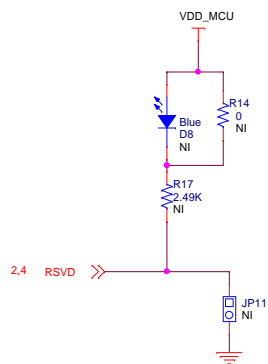

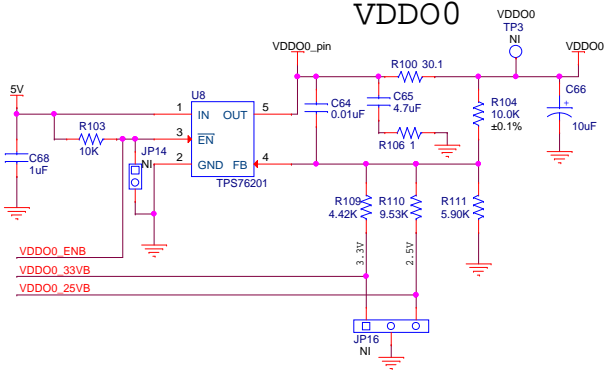


Note: All components on this page are not installed except the standoffs

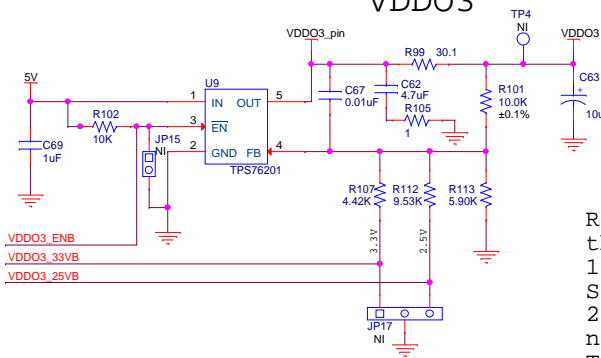


		400 W Cesar Chavez Austin, TX 78701	
SILICON LABS			
Title			
Not Installed Components			
Size	Document Number	<Variant Name>	Rev
B	SIS342-EB		3.0
Date:	Thursday, July 03, 2014	Sheet	4 of 6

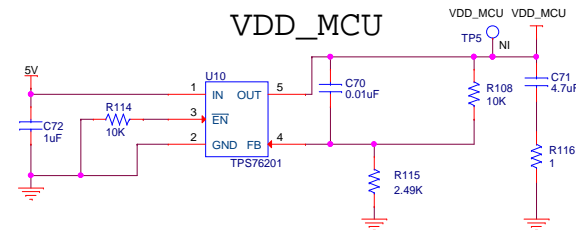
## VDD00



## VDD03



## VDD\_MCU

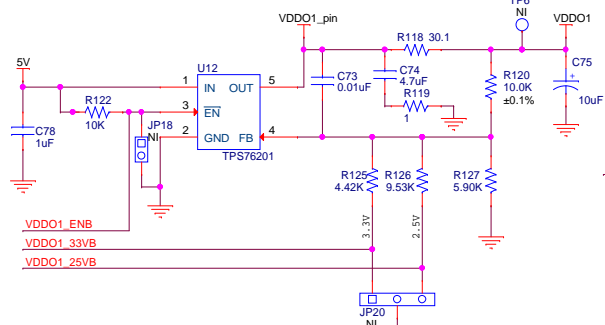


Regulators on this EVB are included to allow the EVB software to

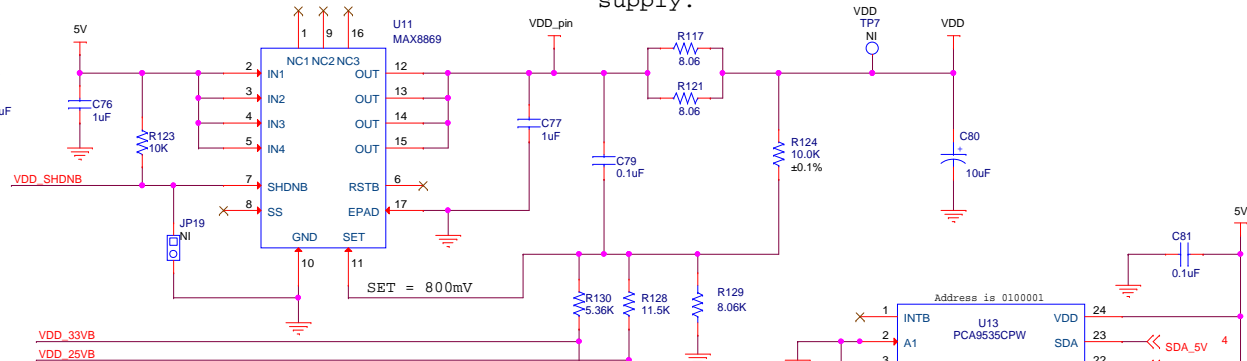
1. Measure the current to each VDD pin of the Si5342
2. Independently control VDD, VDD00/1/2/3, as needed by customer configurations.

Typical applications will not require independent regulation for each Si5342 VDD supply.

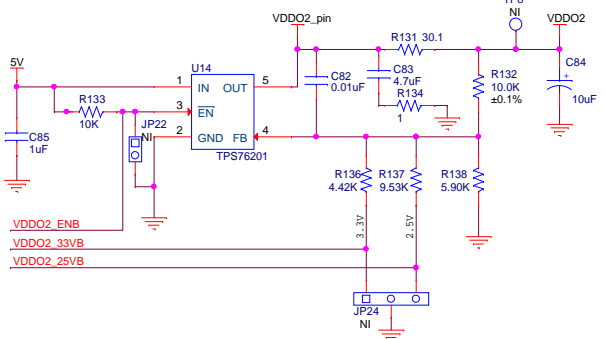
## VDD01



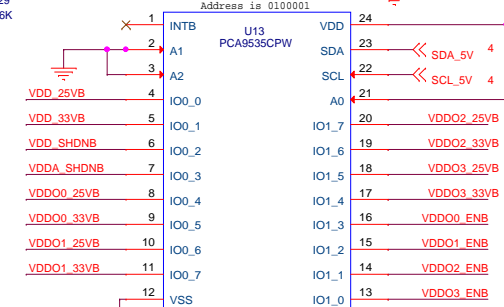
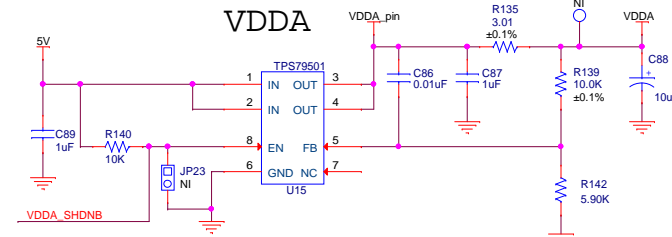
## VDD



## VDD02



## VDDA



REVISION HISTORY

Rev 1.0 - June 30, 2014, Initial Board Release  
Dennis Rehm

Rev 3.0 - July 3, 2014, Added R165, R166, R167, and  
R168, moved C79 and changed value from  
0.01uf to 0.1 uf  
Dennis Rehm