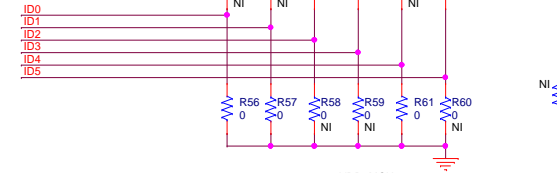
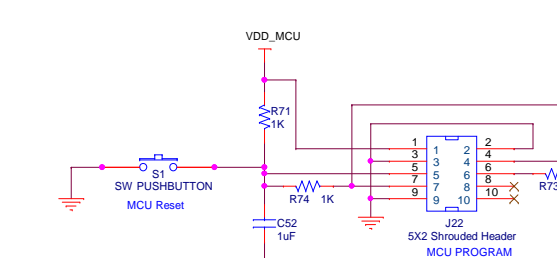
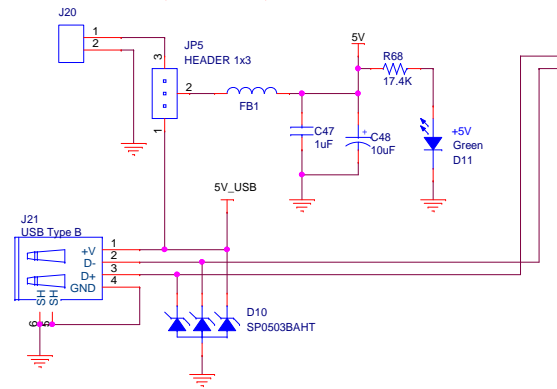
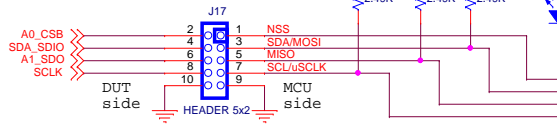


Board Address is
101100 = 44d

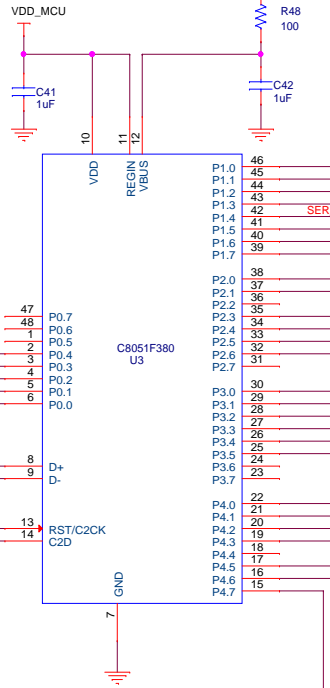


J17 header allows the EVB MCU to be connected to an external SI5344. By doing this the Silicon Labs GUI software can read and write to an external SI5344.



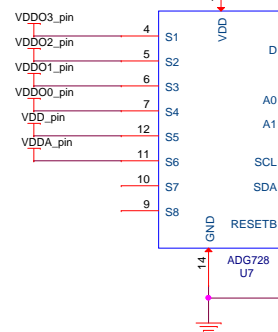
MCU Reset

MCU Programming

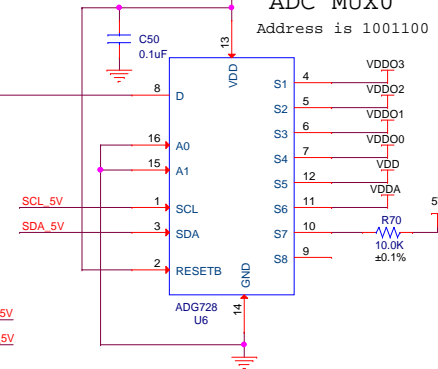



MCU Status LEDs

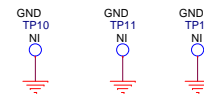
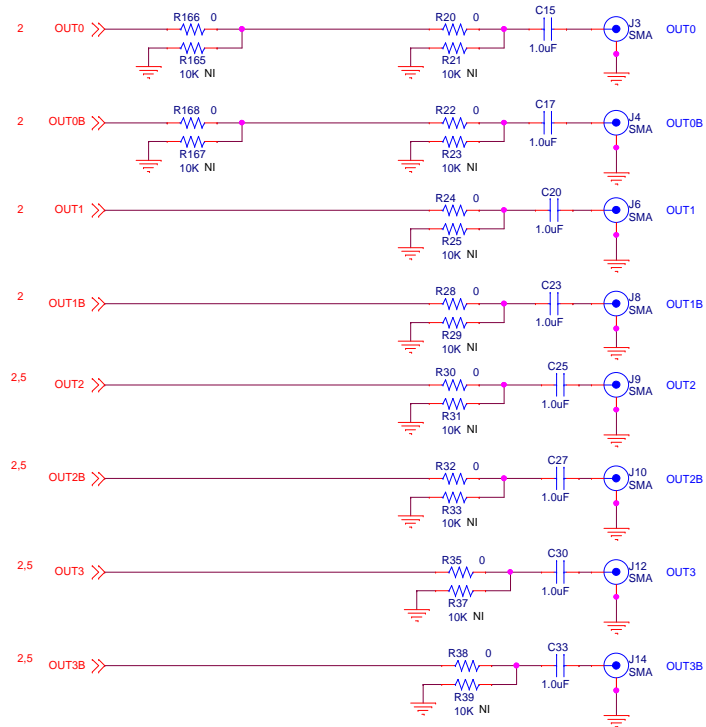
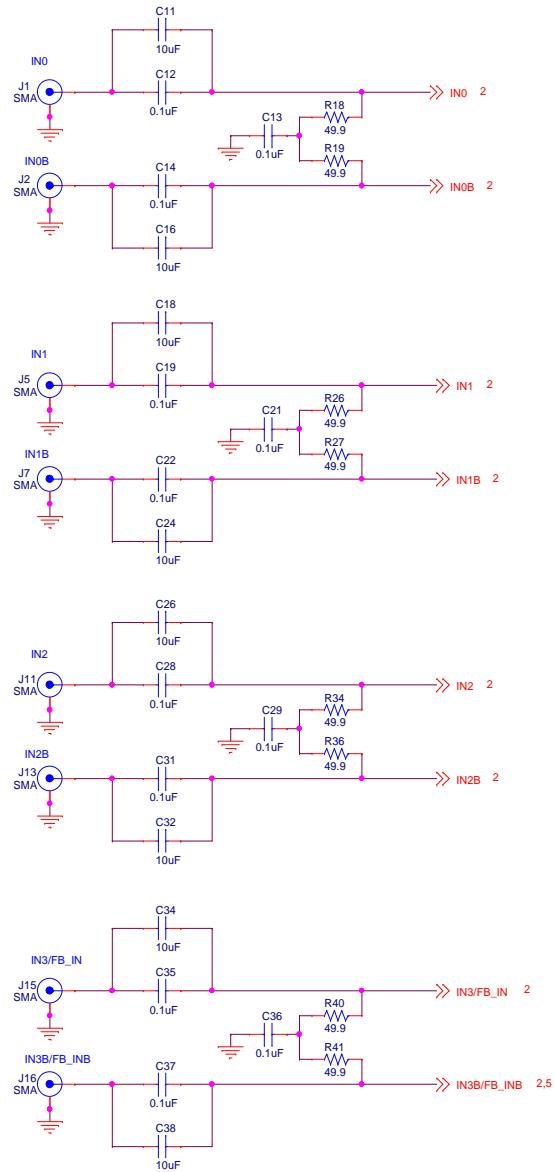
ADC MUX1
Address is 1001101



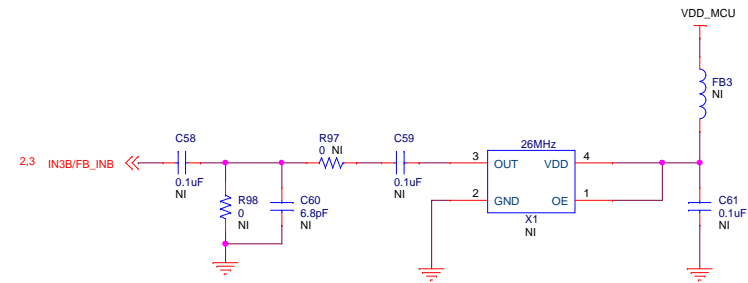
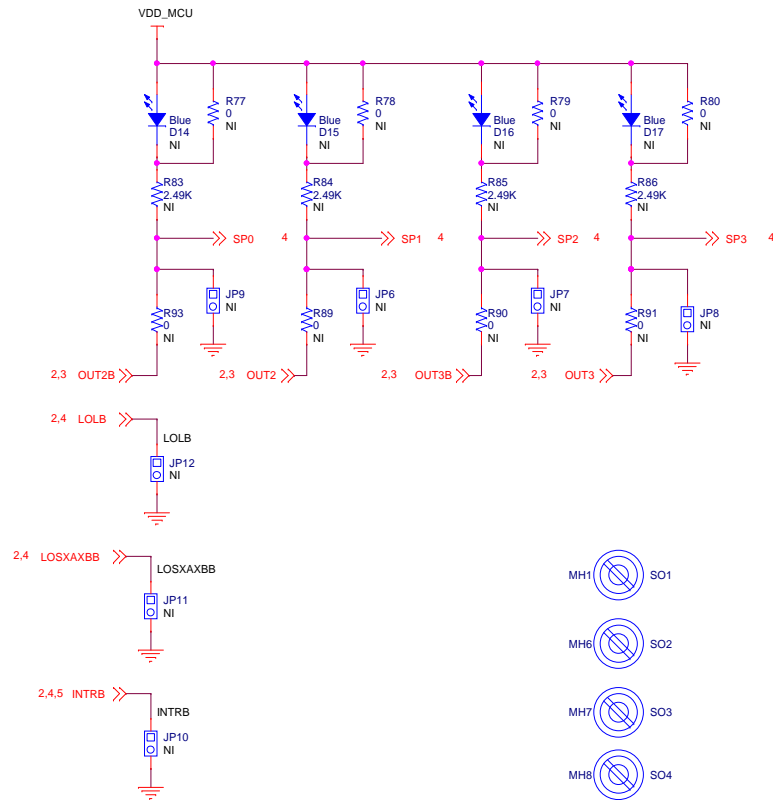
ADC MUX0
Address is 1001100



		400 W Cesar Chavez Austin, TX 78701	
SILICON LABS			
Title		MCU	
Size	Document Number	<Variant Name>	Rev
B	SI5344-EB		
Date:	Thursday, July 03, 2014	Sheet	2 of 6



Note: All components on this page are not installed except the standoffs.



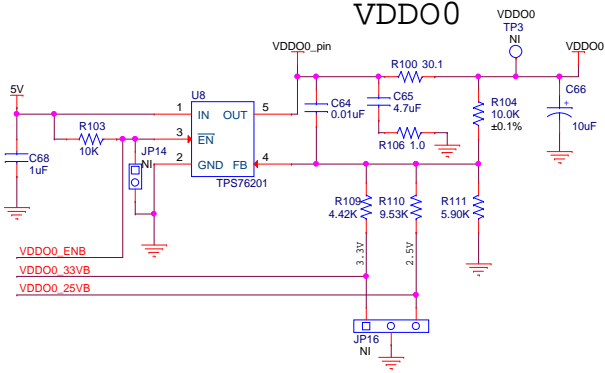
400 W Cesar Chavez
Austin, TX 78701

Title Not Installed Components

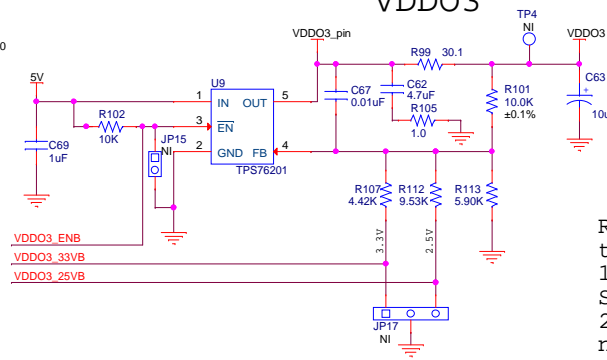
Size B	Document Number SIS344-EB	<Variant Name>	Rev 3.0
--------	---------------------------	----------------	---------

Date: Thursday, July 03, 2014	Sheet 4 of 6
-------------------------------	--------------

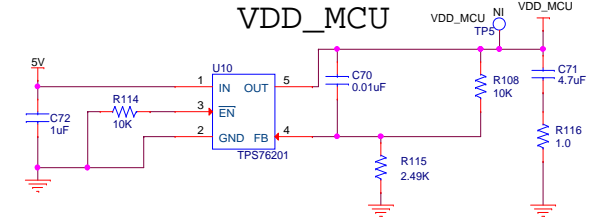
VDD00



VDD03



VDD_MCU

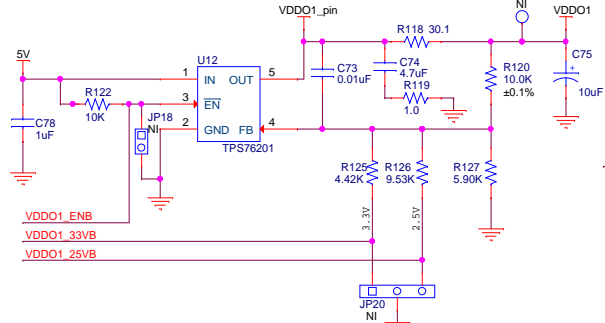


Regulators on this EVB are included to allow the EVB software to

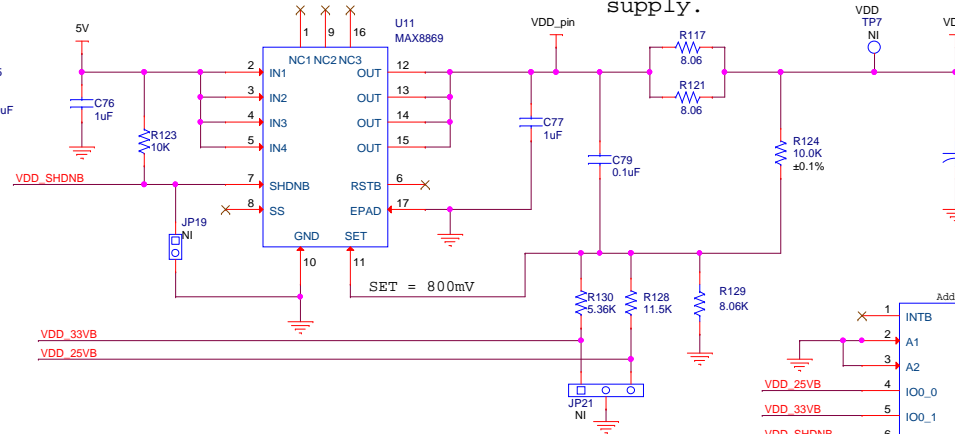
1. Measure the current to each VDD pin of the Si5344
2. Independently control VDD, VDD00/1/2/3, as needed by customer configurations.

Typical applications will not require independent regulation for each Si5344 VDD supply.

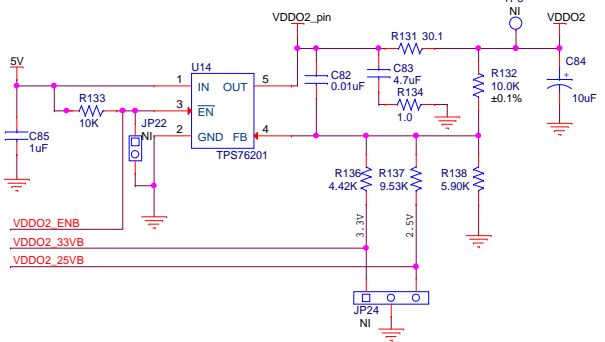
VDD01



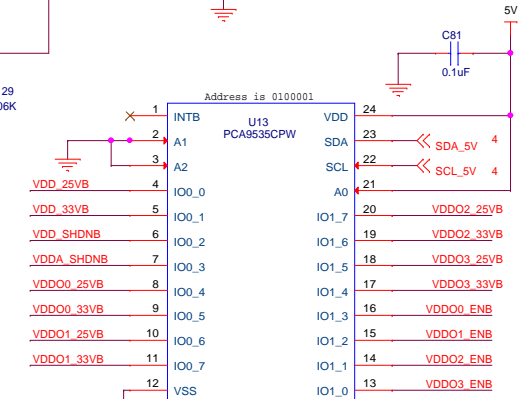
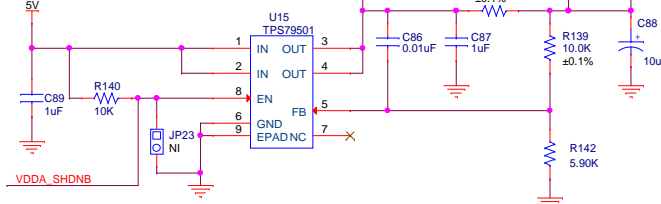
VDD



VDD02



VDDA



REVISION HISTORY

Rev 1.0 - June 30, 2014, Initial Board Release
Dennis Rehm

Rev 3.0 - July 3, 2014, Added R165, R166, R167, and
R168, moved C79 and changed value from
0.01uf to 0.1 uf
Dennis Rehm