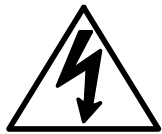


MH2

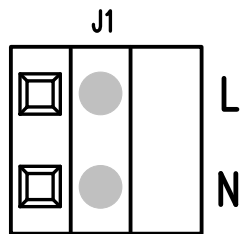
MH3

# LT8315

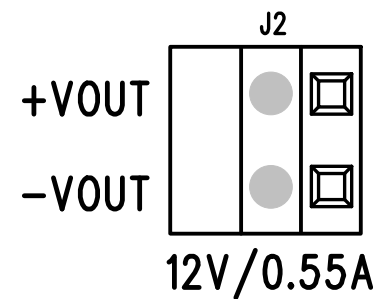
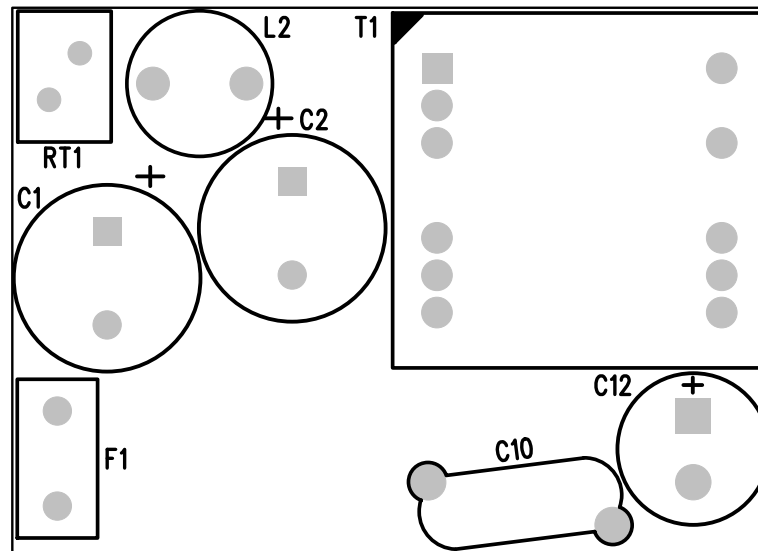
## OFF-LINE NO-OPTO ISOLATED FLYBACK CONVERTER DEMO CIRCUIT 2337A



CAUTION: HANDLING HIGH VOLTAGE  
INVOLVES RISK TO LIFE. COMPLY  
WITH SAFETY REGULATIONS!

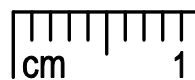


90V-265VAC



MH1

STANDBY MODE



**LINEAR** (408) 432-1900  
TECHNOLOGY [www.linear.com/8315](http://www.linear.com/8315)

MH4

TOP SILKSCREEN  
LINEAR TECHNOLOGY  
DC2337A-3, LT8315EFE  
DATE: 11-16-16