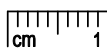
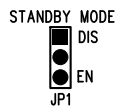
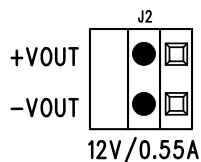
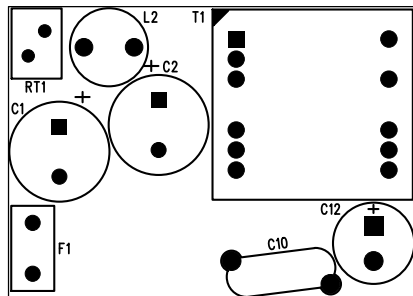
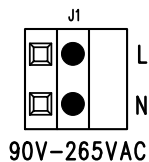


**LT8315**  
**OFF-LINE NO-OPTO**  
**ISOLATED FLYBACK CONVERTER**  
**DEMO CIRCUIT 2337A**

  
 CAUTION: HANDLING HIGH VOLTAGE  
 INVOLVES RISK TO LIFE. COMPLY  
 WITH SAFETY REGULATIONS!

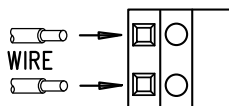


 **LINEAR** (408) 432-1900  
 TECHNOLOGY [www.linear.com/8315](http://www.linear.com/8315)


**NOTES: UNLESS OTHERWISE SPECIFIED**

1. WORKMANSHIP SHALL BE IN ACCORDANCE WITH IPC-A-610.  
 MAXIMUM SOLDER TEMPERATURE IS 240 DEG C.
2. ASSEMBLY PROCESS SHALL INCLUDE: REFLOW SOLDER TOP SIDE SMD.
3. PARTS TO OMIT WILL BE SPECIFIED ON THE BILL OF MATERIALS.  
 LOCATIONS OF OMITTED PARTS SHALL BE FREE OF SOLDER.  
 MASK THE SOLDER STENCIL WHERE SMT PARTS ARE OMITTED.
4. INSTALL SHUNTS AS SHOWN ON ASSY DRAWING.
5. DEPANELIZE BOARDS AFTER ASSEMBLY AND ROUTE-OUT THE  
 BREAKOUT TABS ON FOUR SIDES OF THE BOARD EDGE.
6. DO NOT APPLY ANY KIND OF ASSEMBLY STAMP OR QA STAMP  
 TO ANY BOARD.

J1-J2



Weidmuller 1715250000

		1630 MCCARTHY BLVD MILPITAS, CA 95035 PH: (408)432-1900 <a href="http://www.linear.com">www.linear.com</a> LTC CONFIDENTIAL- FOR CUSTOMER USE ONLY	
		TITLE: TOP ASSEMBLY DRAWING OFF-LINE NO-OPTO ISOLATED FLYBACK CONVERTER	
SIZE N/A	IC NO. LT8315EFE DC2337A	REV. 3	
FILENAME: DC2337A-3.PCB		SHT 1 OF 2	