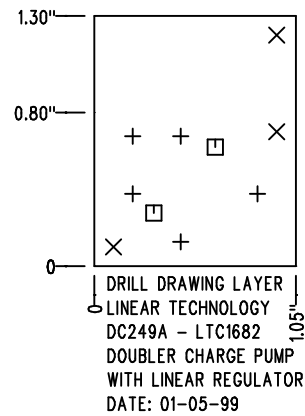


REVISIONS			
REV	DESCRIPTION	APPR	DATE
A	PROTOTYPE RELEASE		

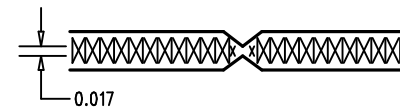
SIZE	QTY	SYM	PLTD
0.094	5	+	PLTD
0.07	3	X	NPLTD
0.02	2	□	PLTD




SHOWN FROM COMPONENT SIDE

NOTES : Unless Otherwise Specified

1. MATERIAL : FR4 OR EQUIVALENT EPOXY, 2 OZ. COPPER CLAD THICKNESS .062 +/- .006 TOTAL OF 2 LAYERS.
2. FINISH : ALL PLATED HOLES .001 MIN. / .0015 MAX. COPPER PLATE ELECTRODEPOSITED TIN-LEAD COMPOSITION BEFORE REFLOW , SOLDER MASK OVER BARE COPPER (SMOBC).
3. SOLDER MASK : BOTH SIDES USING LPI OR EQUIVALENT.
4. SILKSCREEN : USING WHITE NON-CONDUCTIVE EPOXY INK.
5. UNUSED SMD COMPONENTS SHOULD BE FREE OF SOLDER.
6. FILL UP ALL VIAS WITH SOLDER.
7. SCORING:



8. PLEASE LOOK AT THE README FILE FOR THE OTHER REQUIREMENTS.

APPROVALS			 LINEAR TECHNOLOGY 1630 McCarthy Blvd. Milpitas, CA 95035 PH: (408)432-1900	
	INIT	DATE		
DRAWN			TITLE: Fabrication Drawing DOUBLER CHARGE PUMP WITH LINEAR REGULATOR	
CHECK				
DESIGN	KIM T.	01-05-99		
ENGR	TED H.	01-05-99		
			SIZE	REV.
			A	A
SCALE = NONE			DES- 0000	SHT 1 of 1