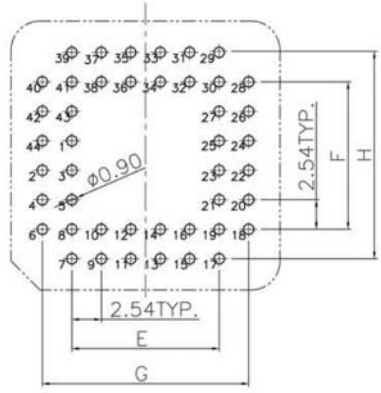
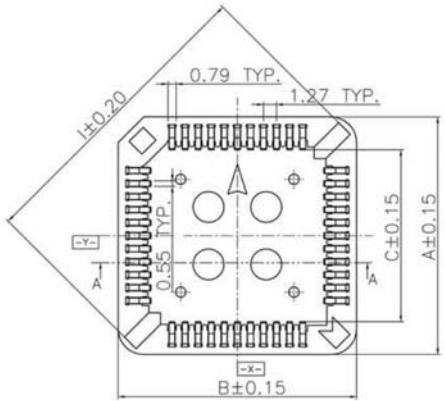


A



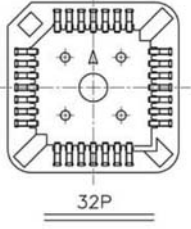
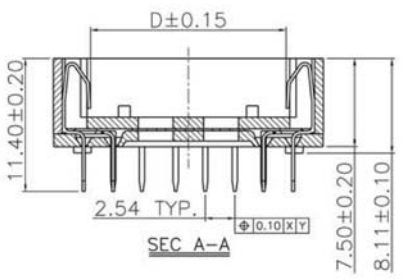
RECOMMENDED P.C. BOARD LAYOUT

Dimension (mm)	A	B	C	D	E	F	G	H	I
No.Of Pin									
DIP - 20P	15.56	15.56	9.10	9.10	5.08	5.08	10.16	10.16	17.55
DIP - 28P	18.10	18.10	11.66	11.66	7.62	7.62	12.70	12.70	21.25
DIP - 32P	20.60	18.10	14.17	11.69	7.62	10.16	12.70	15.24	23.00
DIP - 44P	23.48	23.48	16.78	16.78	12.70	12.70	17.78	17.78	28.50
DIP - 52P	25.88	25.88	19.28	19.28	15.24	15.24	20.32	20.32	32.45
DIP - 68P	31.66	31.66	24.35	24.35	20.32	20.32	25.40	25.40	39.30
DIP - 84P	36.66	36.66	29.38	29.38	25.40	25.40	30.48	30.48	46.85

B

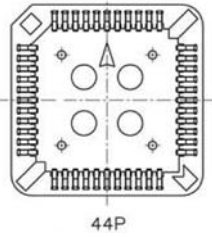
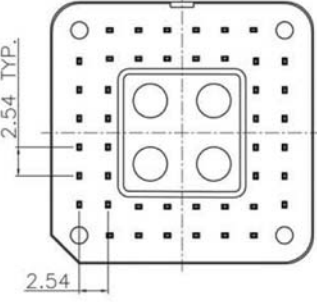
C

D



32P

E



44P

NOTES:  
 SPECIFICATIONS:  
 CURRENT RATING:1 AMP.  
 VOLTAGE:250V AC/DC MAX.  
 DIELECTRIC WITHSTANDING:500VAC FOR ONE MINUTE.  
 CONTACT RESISTANCE:30mΩ (MAX).  
 INSULATION RESISTANCE:1000MΩ (MIN).  
 OPERATING TEMPERATURE:-55°C+105°C  
 RETENTION FORCE:0.30KG PER PIN (MIN).  
 MATERIALS:  
 BODY: PBT+30%GF UL 94V-0.  
 COVER:PBT+30%GF UL 94V-0.  
 CONTACTS:PHOSOR BRONZE.  
 CONTACT PLATING TIN/GOLD.

G

Scale	1:1							Name	Item No. <b>A-CCSxx-Z-R (Tin)</b> <b>A-CCSxx-G-R (Gold)</b>
TOLERANCE					Drawn	11.07.11	Chappell	Title Chip-Carrier PLCC socket, 2.54MM pitch	
X.X	±0.40				Approved				
X.XX	±0.25								rev00
X.XXX	±0.15							Replace	
Angle	±3°								
Modification		Date		Name					



H