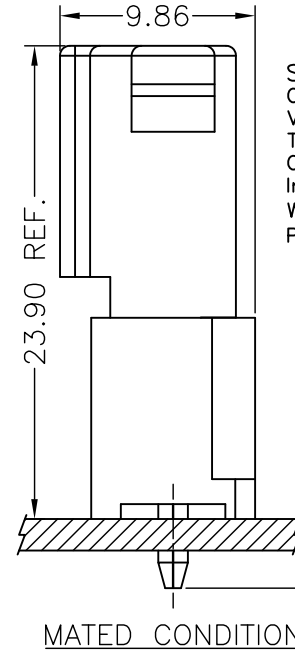
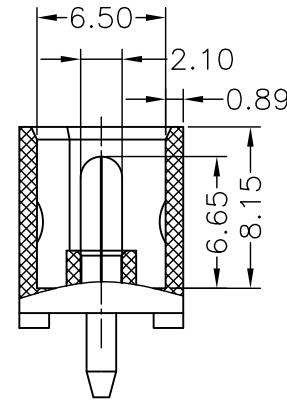
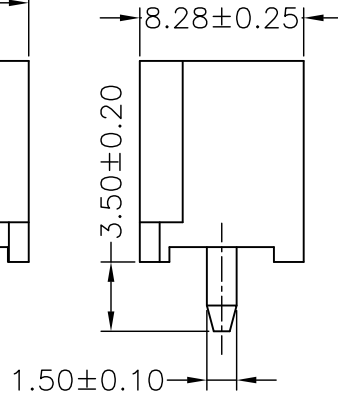
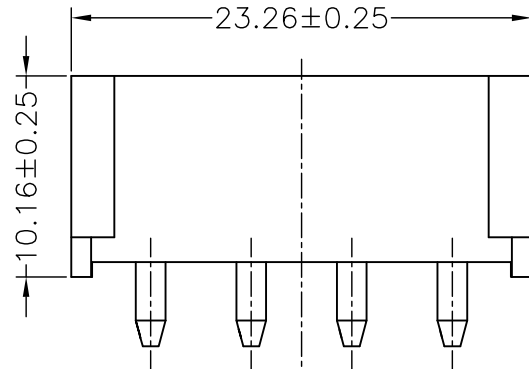


Ordering code

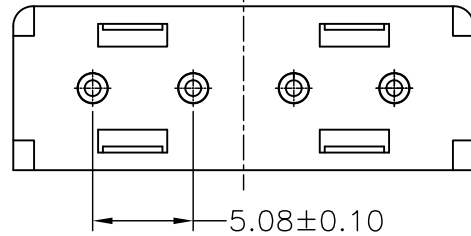
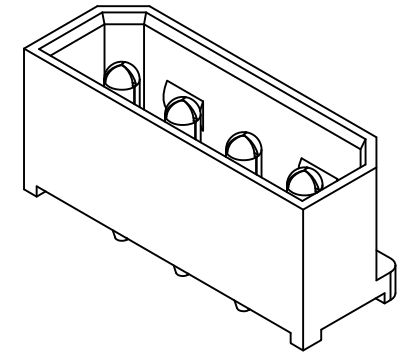
**C5080 WV-04P XXX**  
 ① ② ③ ④


- ① Series No.
- ② Connector type: WV=Vertical
- ③ No. of circuits
- ④ Option code:  
 Blank=Nylon 66,UL94V-2, Natural(Translucent)  
 BK =Nylon 66,UL94V-2, Natural(Black)



SPECIFICATIONS

- Current Rating: 10A AC,DC
- Voltage Rating: 250V AC,DC
- Temperature Range: -25°C ~ +85°C
- Contact Resistance: 10mΩ Max
- Insulation Resistance: 1000MΩ Min
- Withstanding Voltage: 1500V AC/minute
- Pin Material: Brass/Tin-plated



 <b>燦達電子工業股份有限公司</b> <b>JOINT TECH ELECTRONIC IND. CO., LTD.</b>						UNIT		SCALE		SHEET		TITLE:					
						mm				1 of 1		P/N:C5080WV-04P 5.08mm PITCH 180° WAFER					
						DRAWN BY		APPROVED BY									
						歐陽小強		董正一		2007.04.25							
						GENERAL TOLERANCE						DRAW NO. : C5080WV-04P					
A1						ENI107280313		2011.07.28		肖勇				X.X±0.25		ANGLE±	
A0						NEW RELEASE		2007.04.25		董正一				X.XX±0.15			
REV.						DESCRIPTION		DATE		NAME		X.XXX±0.05					