

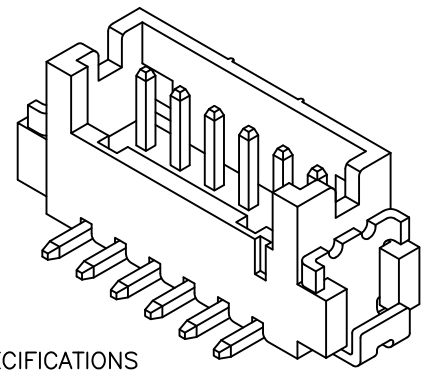
CAP  
(FOR PICK AND  
PLACE SYSTEMS)

TO MAKE SURE THE CAP CAN  
BE PUT ON THE MIDPOINT FOR  
04P TO 15P.

P/N LEGEND

A1252 WV-S-XP XXX

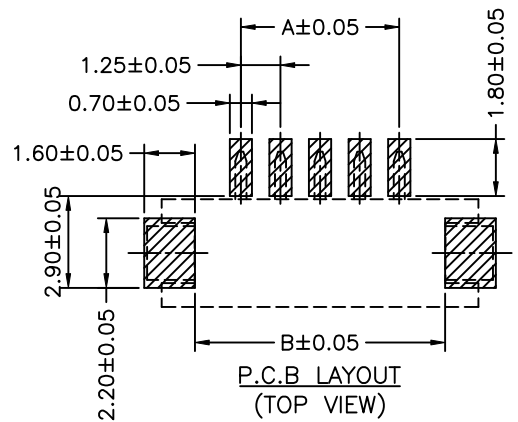
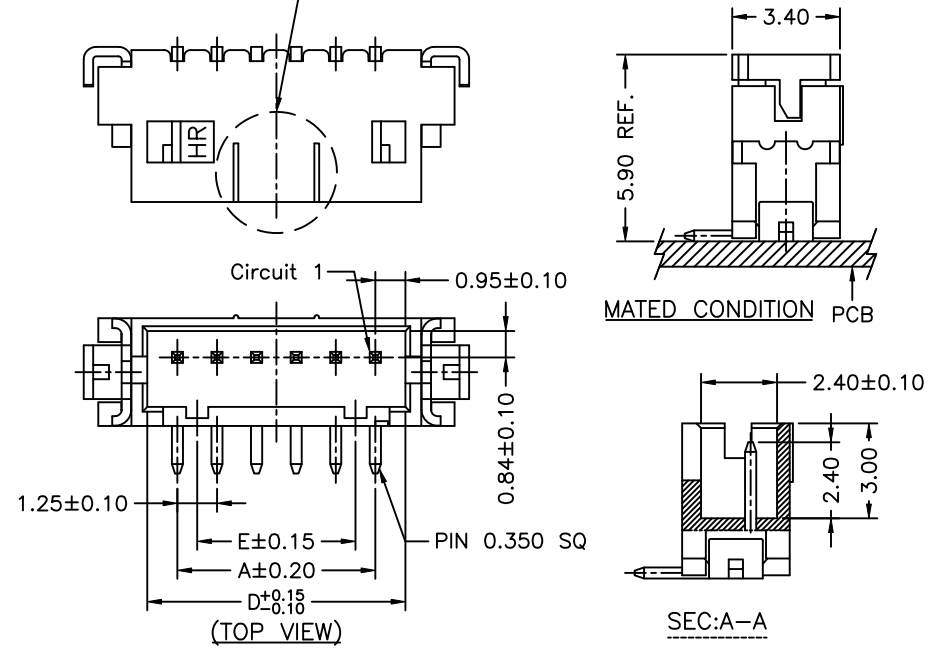
① Series No.  
② Connector type: WV=Vertical  
③ Mounting type: S=SMT  
④ No. of circuits  
⑤ Option code:  
D01=Contacts/Gold-flash and  
Solder tabs/Gold-flash  
Color: Natural(Beige)



SPECIFICATIONS

Current Rating: 1A AC,DC  
Voltage Rating: 150V AC,DC  
Temperature Range: -25°C ~ +85°C  
Contact Resistance: 30mΩ Max.  
Insulation Resistance: 500MΩ Min.  
Withstanding Voltage: 500V AC/minute  
Pin Material: Brass  
Solder Tabs: Phosphor Broze  
Wafer: Nylon 6T,UL94V-0  
Cap: Nylon 6T,UL94V-0

Circuit No.	Dimensions				
	A	B	C	D	E
02P	1.25	4.15	6.25	3.15	---
03P	2.50	5.40	7.50	4.40	1.25
04P	3.75	6.65	8.75	5.65	2.50
05P	5.00	7.90	10.00	6.90	3.75
06P	6.25	9.15	11.25	8.15	5.00
07P	7.50	10.40	12.50	9.40	6.25
08P	8.75	11.65	13.75	10.65	7.50
09P	10.00	12.90	15.00	11.90	8.75
10P	11.25	14.15	16.25	13.15	10.00
11P	12.50	15.40	17.50	14.40	11.25
12P	13.75	16.65	18.75	15.65	12.50
13P	15.00	17.90	20.00	16.90	13.75
14P	16.25	19.15	21.25	18.15	15.00
15P	17.50	20.40	22.50	19.40	16.25



						燦達電子工業股份有限公司 JOINT TECH ELECTRONIC IND. CO., LTD.	
		UNIT	SCALE	SHEET		TITLE:	
		mm	1 : 1	1 of 2		1.25mm PITCH 180° SINGLE ROW WAFER- SMT TYPE, W/O BOSS	
		DRAWN BY		APPROVED BY			
		歐陽小強		董正一			
		2007.01.05		2007.01.05			
		GENERAL TOLERANCE					
A5	EN1601210001	2016.01.25	劉建芳			DRAW NO.: A1252WV-S-XP REV. A5	
A4	EN1202060018	2012.02.06	陳錦展				
A3	EN1106240218	2011.06.24	陳敏				
A2	EN1012010279	2010.12.01	陳錦展				
REV.	DESCRIPTION	DATE	NAME	X.X±0.25	ANGLE±		
				X.XX±0.15			
				X.XXX±0.05			

A

B

C

D

A

B

C

D

1 |

2 |

3 |

4 |

1 |

2 |

3 |

4 |