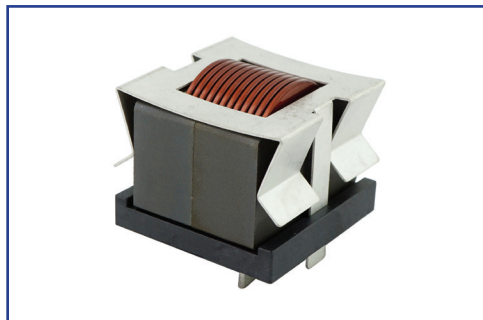


HEW (HELICAL EDGE WOUND) HIGH CURRENT INDUCTOR



HWI4427V SERIES



- High Current Inductors (inductance range from 1.4 μ H to 45.9 μ H) in a compact size package (44mm x 35mm x 36mm)
- Flat wire coil minimizes losses at high frequency
- Vertical mount package with mounting clip and base for added support (horizontal mount version also available)
- Operating Temperature -40°C to +150°C
- RoHS Compliant Product
- Custom Design Available

ELECTRICAL PARAMETERS @ 25°C

Part Number	INDUCTANCE (μ H) $\pm 15\%$	I _{rms} (Amp) Typical		DCR (m Ω) Max	I _{sat} (Amp) Typical		Dimensions (mm)	
		20°C Rise	40°C Rise		10% Drop	30% Drop	C	D
HWI4427-038A-450V	45.9	25	38	4.2	25	48	1.50	8.00
HWI4427-038A-300V	30.6	25	38	4.2	46	82	1.50	8.00
HWI4427-044A-290V	29.4	29	44	3.0	31	61	1.80	8.00
HWI4427-044A-190V	19.6	29	44	3.0	58	102	1.80	8.00
HWI4427-068A-130V	13.1	45	68	1.3	47	91	2.50	8.50
HWI4427-068A-8R7V	8.7	45	68	1.3	87	154	2.50	8.50
HWI4427-068A-5R6V	5.6	45	68	1.3	174	342	2.50	8.50
HWI4427-092A-7R3V	7.3	61	92	0.7	63	122	3.00	8.50
HWI4427-092A-4R9V	4.9	61	92	0.7	116	205	3.00	8.50
HWI4427-122A-3R3V	3.3	80	122	0.4	95	183	3.50	8.50
HWI4427-122A-2R2V	2.2	80	122	0.4	174	308	3.50	8.50
HWI4427-122A-1R4V	1.4	80	122	0.4	349	685	3.50	8.50

Note:

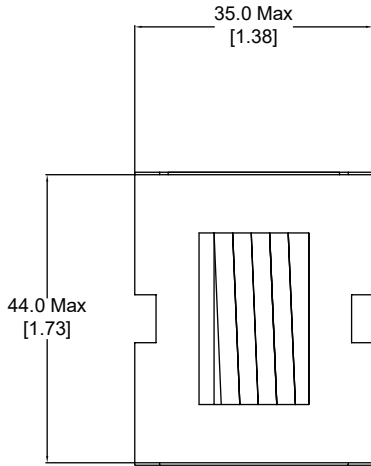
1. Inductance measured at 10KHz, 1V_{rms}
2. I_{sat} is DC current at which the inductance drops the specified amount from its original value without bias.
3. I_{rms} is the DC current that causes the specified temperature rise of the winding from 25°C ambient for the inductor.

HEW (HELICAL EDGE WOUND) HIGH CURRENT INDUCTOR

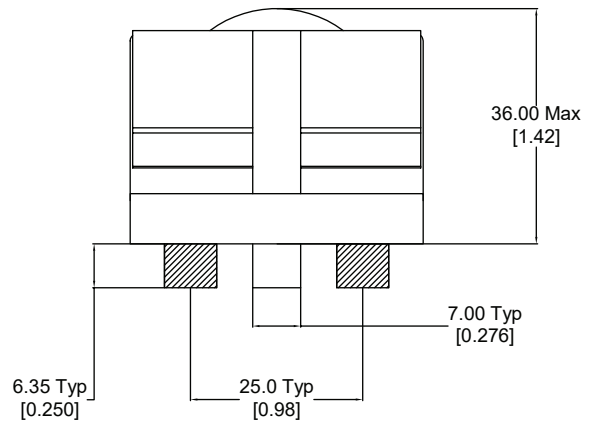
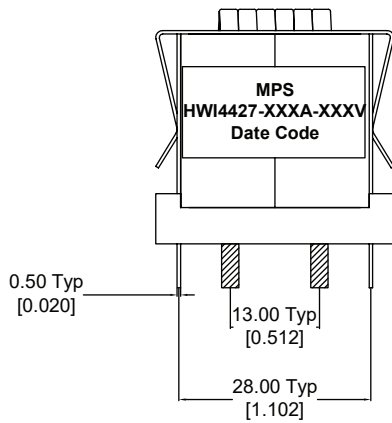
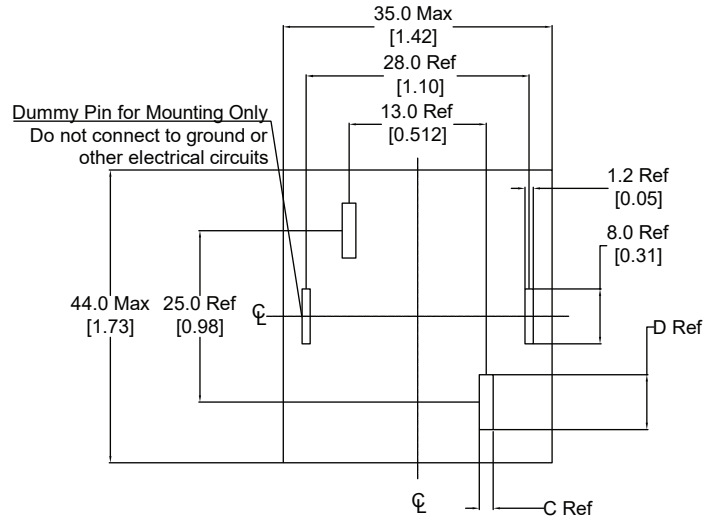


HWI4427V SERIES

DIMENSIONS (mm / [inch])



Recommended PCB Layout



Revised 03/17/2016
Product performance is limited to specified parameters. Data is subject to change without prior notice.

Tel: 310-325-1043
Fax: 310-325-1044

www.mpsind.com
sales@mpsind.com