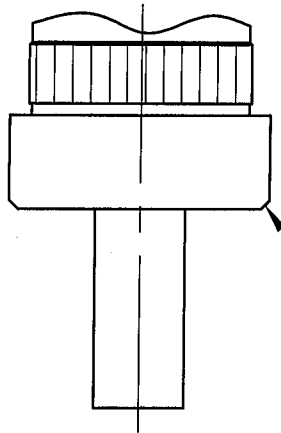
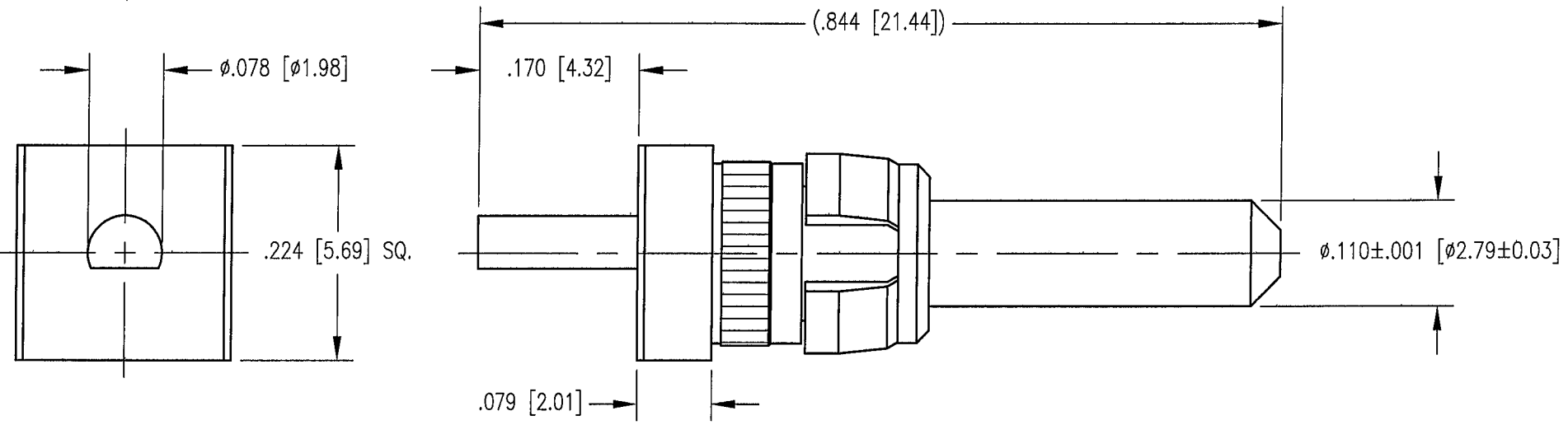


DWG. NO. SD220-010-0048G			
REV	DESCRIPTION	BY DATE	APPD
A	RELEASE PER ECR 7760	SD/SD/SD JEM	



.005/.010 [0.13/0.25]  
X 45° TYP.



NOTES:

1. MATERIALS:

BODY: BRASS PER ASTM B16  
CLIP RING: BERYLLIUM COPPER PER ASTM B194

2. FINISH:

BODY: .000030 MIN. GOLD PER MIL-G-45204 OVER  
.000050 MIN. NICKEL PER ASTM QQ-N-290  
CLIP RING: .000100 MIN. NICKEL PER QQ-N-290 OVER  
COPPER FLASH

PER ASME Y14.5M-1994 UNLESS OTHERWISE SPECIFIED: DIMENSIONS ARE IN INCHES (MM)				<b>NORTHROP GRUMMAN</b>			
TOLERANCES: DECIMALS .XX ± .01 [0.254] .XXX ± .005 [0.127] ANGLES ± 2°				Winchester Electronics 62 Barnes Industrial Road North Wallingford, CT 06492			
SCALE: 6:1				TITLE FIRST MATE EDGE MOUNT PLUG			
<b>CUSTOMER DRAWING</b>				A		SD220-010-0048G	
DRAWN JEM	DATE 01/20/03	CHECKED SD	DATE 01/23/03	SHT. OF 1 1	REV. A		
APPROVED KJT	DATE 01/22/03	APPROVED JED	DATE 01/23/03				