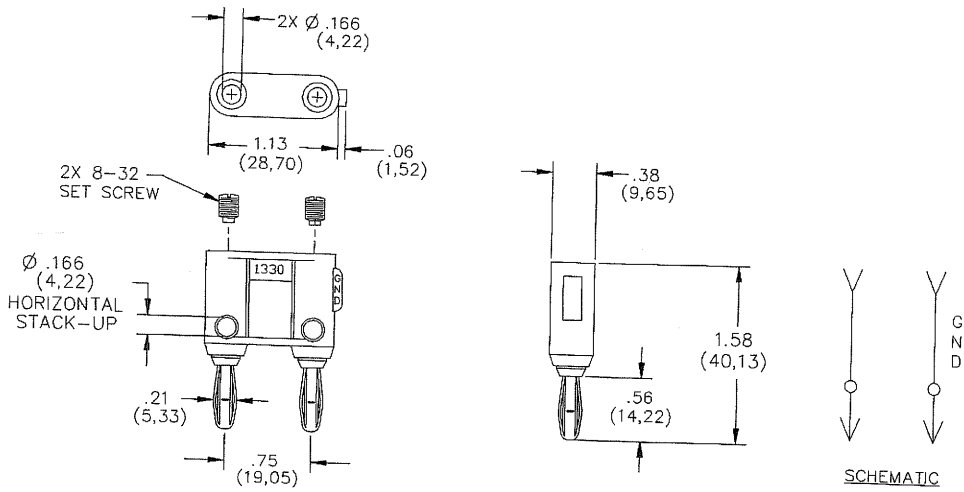


MODEL: BU-P1330
Double Banana Plug (Solderless)



MATERIALS:
Body – Nylon
Contacts – Nickel Plated Beryllium Copper

Standard Colors: -0 Black; -2 Red

RATING:
15 Amps
Hands free testing to 5000 VRMS Max.
Temperature: -50°C to 105°C