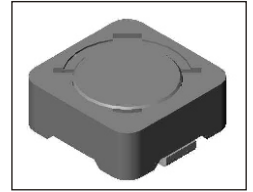


SMT Power Inductor

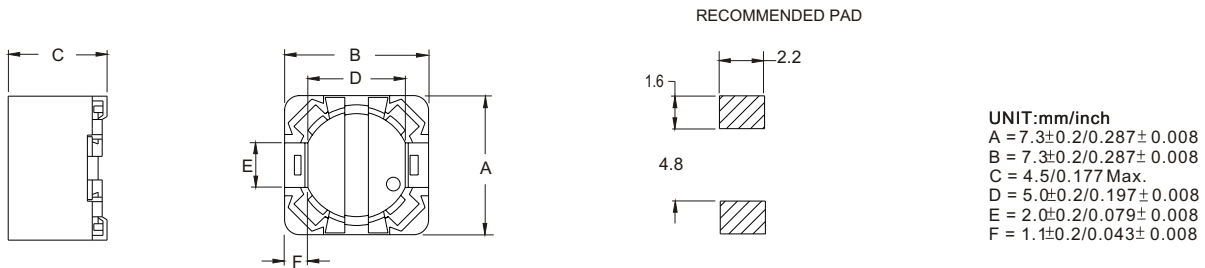
SIQ74 Type

Features

- Small size (7.3mm*7.3mm), low profile (4.5mm max. height) SMD type.
- Magnetically shielded, suitable for high density mounting.
- High energy storage and low DCR.
- Provided with embossed carrier tape packing.
- Ideal for power source circuits, DC-DC converter, DC-AC inverters inductor application.
- In addition to the standard versions shown here, customized inductors are available to meet your exact requirements.

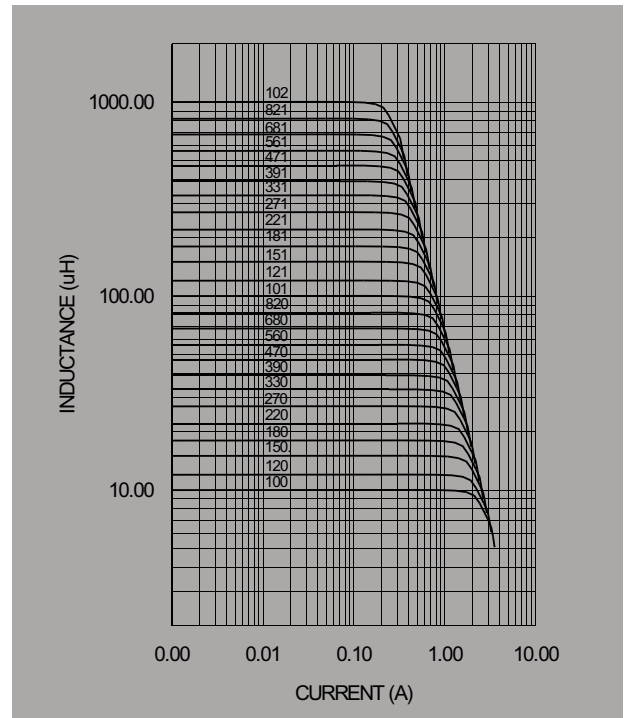


Mechanical Dimension:



Electrical Characteristics: At 25°C: 1KHz, 1V

| PART NO. | L ¹ (uH) | DCR (Ω) MAX | I _{RATED} ² (A)dc |
|-------------|------------------------|----------------|--|
| SIQ74 - 100 | 10 | 0.049 | 1.84 |
| SIQ74 - 120 | 12 | 0.058 | 1.71 |
| SIQ74 - 150 | 15 | 0.081 | 1.47 |
| SIQ74 - 180 | 18 | 0.091 | 1.31 |
| SIQ74 - 220 | 22 | 0.110 | 1.23 |
| SIQ74 - 270 | 27 | 0.150 | 1.12 |
| SIQ74 - 330 | 33 | 0.170 | 0.96 |
| SIQ74 - 390 | 39 | 0.230 | 0.91 |
| SIQ74 - 470 | 47 | 0.260 | 0.88 |
| SIQ74 - 560 | 56 | 0.350 | 0.75 |
| SIQ74 - 680 | 68 | 0.380 | 0.69 |
| SIQ74 - 820 | 82 | 0.430 | 0.61 |
| SIQ74 - 101 | 100 | 0.610 | 0.60 |
| SIQ74 - 121 | 120 | 0.660 | 0.52 |
| SIQ74 - 151 | 150 | 0.880 | 0.46 |
| SIQ74 - 181 | 180 | 0.980 | 0.42 |
| SIQ74 - 221 | 220 | 1.170 | 0.36 |
| SIQ74 - 271 | 270 | 1.640 | 0.34 |
| SIQ74 - 331 | 330 | 1.860 | 0.32 |
| SIQ74 - 391 | 390 | 2.850 | 0.29 |
| SIQ74 - 471 | 470 | 3.010 | 0.26 |
| SIQ74 - 561 | 560 | 3.620 | 0.23 |
| SIQ74 - 681 | 680 | 4.630 | 0.22 |
| SIQ74 - 821 | 820 | 5.200 | 0.20 |
| SIQ74 - 102 | 1000 | 6.000 | 0.18 |



1. Tolerance of inductance
10~1000uH±20%
2. I_{RATED} : rated current. ΔL<25%, ΔT<45°C at I_{RATED}
3. Operating temperature: -20°C to 105°C (including self-temperature rise)



DELTA ELECTRONICS, INC.

(TAOYUAN PLANT CPBG) 252, SAN YING ROAD, KUEISAN INDUSTRIAL ZONE, TAOYUAN SHIEN, 333, TAIWAN, R.O.C.

TEL: 886-3-3591968; FAX: 886-3-3591991

<http://www.deltawww.com>