

**Features**

- Frequency Range 5 – 1000 MHz
- Low Cost
- Industry Standard SMT package
- Available in Tape-and -Reel
- 75 Ohms Characteristic Impedance

**Description**

The SPA-1002-27 is a 0° In-phase two way power splitter designed for applications that require small, low cost and highly reliable surface mount components. Applications may be found in broadband, wireless and other communications systems. S-Parameters are available on request.

**SURFACE MOUNT 2-WAY SPLITTER**



**Specifications**

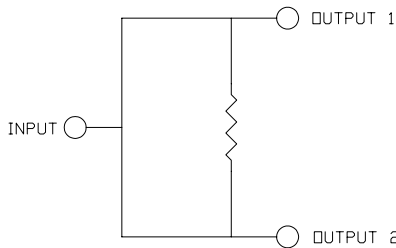
Parameter	Minimum	Typical	Maximum
Frequency Range (MHz)	5		1000
Insertion Loss (dB)		0.5	1.2
Isolation (dB)	18	30	
Return Loss (dB)		23	17.7
Amplitude Balance (dB)		0.1	0.4
Phase Balance (Degrees)		1.0	3.0

**Absolute Maximum Ratings**

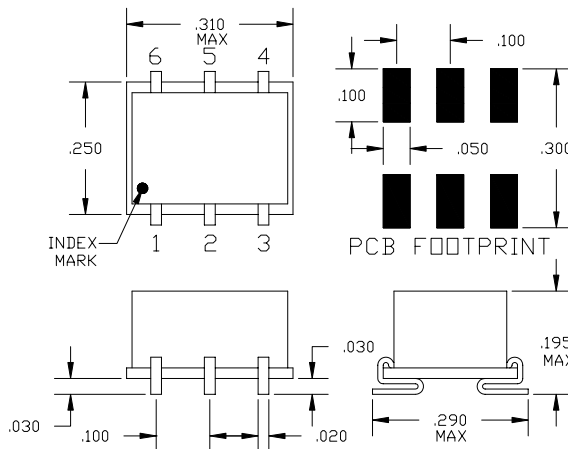
Parameter	Maximum
RF Power	+33 dBm
Operating Temperature	-55 to +100 °C
Storage Temperature	-55 to +100 °C
Re-flow Temperature	+ 240 °C

Note: Typical values represent Mid-band performance @ 25°.

**Schematic**



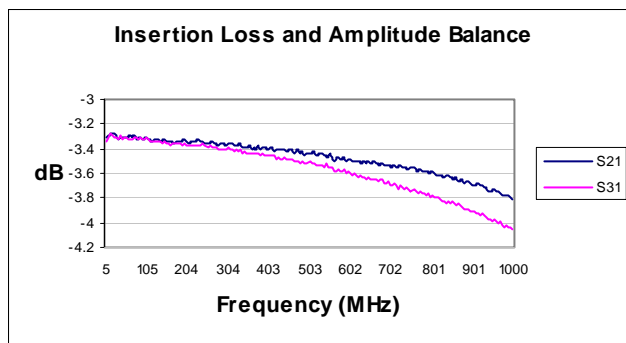
**Package – S06**



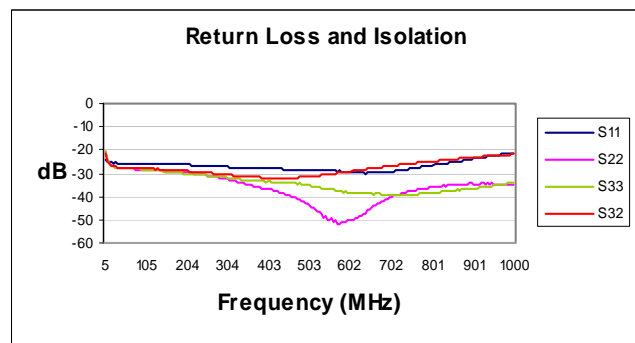
**Pin Functions**

Function	Pin
INPUT	1
OUTPUT 1	3
OUTPUT 2	4
GROUND	2,5,6

Typical Test Data – Insertion Loss and Amplitude Balance



Typical Test Data – Return Loss and Output Isolation



Specifications and information on this data sheet are subject to change without notice..