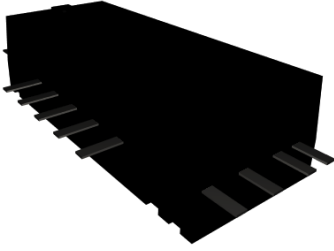


10D-1T Series

Surface Mount Form C



PRODUCT DESCRIPTIONS

The 10D-1T Series was developed in a single SPDT (1 Form C) package to satisfy the requirements of high frequency range. Supported by the exceptional technology, this series ensures to correspond to a wide range of applications from DC to AC, and is ideal for ATE and measurement instruments.

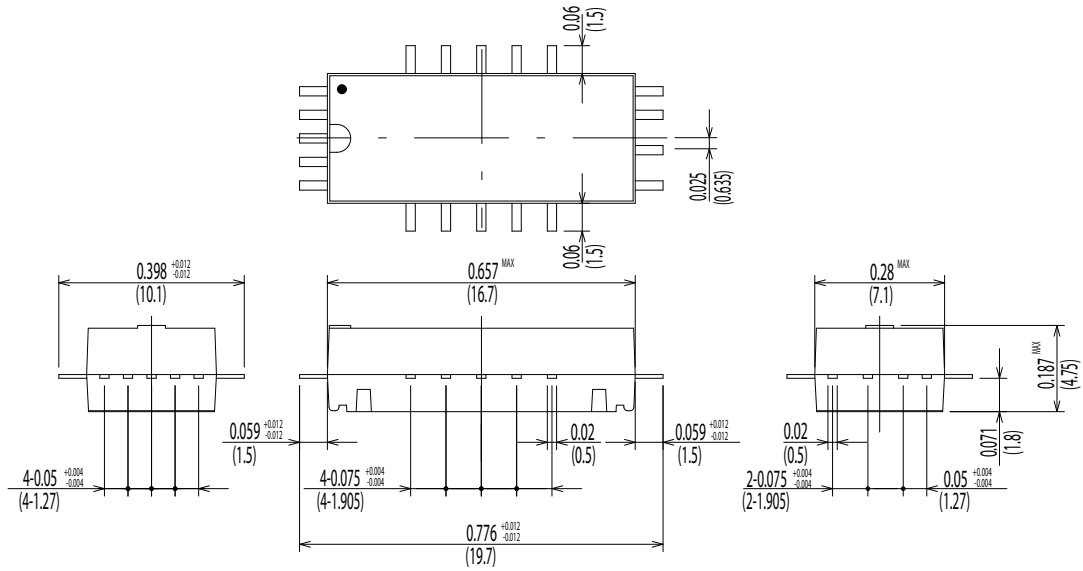
SPECIFICATIONS



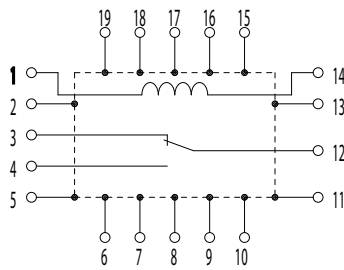
10D-1T Series		10D-1T56A	10D-1T16A	Axial
Parameters	Units	1 Form C		Test Conditions
Coil Specifications				
Nominal Coil Voltage	VDC	3.3	5.0	±10% @ 20°C 15°C to 35°C 15°C to 35°C
Coil Resistance	Ω	70	120	
Operate Voltage	VDC Max	2.8	3.7	
Release Voltage	VDC Min	0.8	0.7	
Contact Ratings				
Switching Voltage	Volts	30		Max DC/Peak AC resistance
Switching Current	Amps	0.2		Max DC/Peak AC resistance
Carry Current	Amps	0.5		Max DC/Peak AC resistance
Contact Rating	Watts	3		Max DC/Peak AC resistance
Life Expectancy	x10 ⁶ Cycle	50		@ 1V 10mA
Contact Resistance	mΩ	100		Max initial @ operate voltage
Contact Resistance Stability	mΩ	5.0		Max initial @ operate voltage
Relay Specifications				
Insulation Resistance	Ω Min	10 ¹⁰		Between all isolated pins @ 100V 20°C 40%RH
Dielectric Strength	VDC Min	150		Between contacts
	VDC Min	200		Contacts to shield
	VDC Min	200		Contacts/Shield to coil
Operate Time (Including Bounce)	msec Max	1.5		@ nominal coil voltage 100Hz square wave
Release Time	msec Max	2.0		Diode suppression
Environmental Ratings				
Measurement Reference Conditions		Storage temp: -40°C to +85°C		
Temp: 15°C to 35°C		Operate temp: -20°C to +60°C		
Humidity: 25% to 75%RH		Vibration: 20G's to 2000Hz		
Atmospheric Pressure: 860 to 1060hpa		Shock: 50G's		

Dimensions All Dimensions are inches (mm)

10D-1T56A/10D-1T16A



Schematic <Top View>



Land Pattern Recommendation

