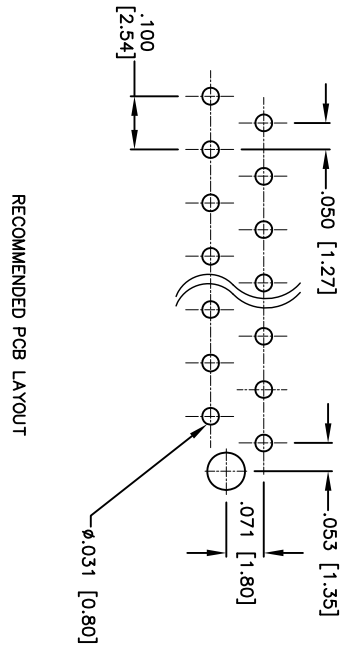
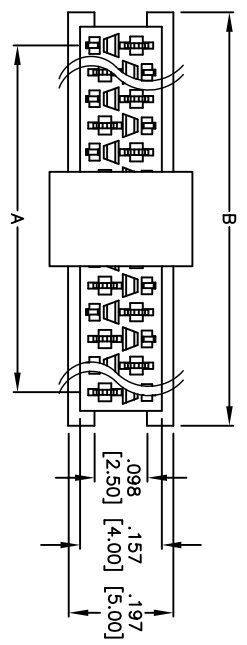
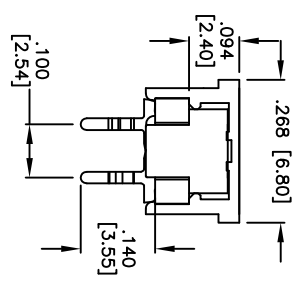
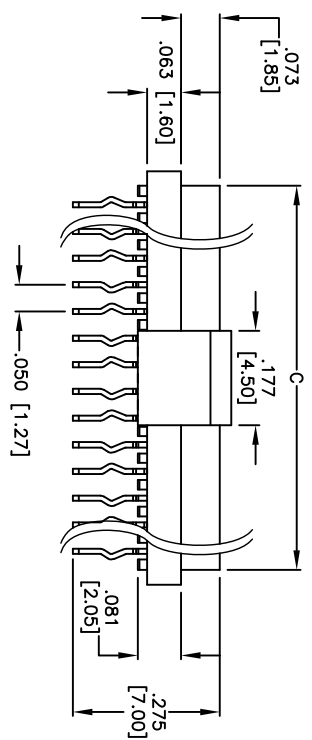


Rev	AWO #	Description	Date	Appr
-		RELEASED	9/16/10	

APPROVED: _____
 DATE: _____ TITLE: _____



RECOMMENDED PCB LAYOUT



PACKAGED ON TAPE & REEL

A = .050 [1.27] X # of spaces
 B = .050 [1.27] X # of positions + .126 [3.19]
 C = .050 [1.27] X # of positions + .070 [1.79]

SPECIFICATIONS:

Material:
 Insulator: Hi-temp thermoplastic, rated UL 94V-0
 Insulator color: Red
 Contacts: Phosphor Bronze
 Plating:
 Tin over Copper underplate overall.
Electrical:
 Operating voltage: 30 VAC max
 Current rating: 1.0 Amps max
 Contact resistance: 20 mohms max
 Insulation resistance: 1000 Mohms min
 Dielectric withstanding voltage: 500 VAC for 1 minute
Temperature Rating:
 Operating temperature: -40°C to +105°C
Environmental:
 Lead free, RoHS compliant.
 Recommended soldering temp: 260°C for 5 sec.

ADAM TECH
 909 Rahway Avenue, Union, NJ 07083
 Phone: 908-687-5000 Fax: 908-687-5710

MINI FLEX FEMALE, THRU HOLE
 TIN PLATING

UNLESS OTHERWISE SPECIFIED ALL DIMENSIONS ARE MM [INCHES] TOLERANCES: EXCEPT AS NOTED INCHES		TITLE	
X .XX ± .10	ØXX ± .10	909 Rahway Avenue, Union, NJ 07083	
.XX ± .020	ØXX ± .015	Phone: 908-687-5000 Fax: 908-687-5710	
.XXX ± .015	ØXXX ± .010	MINI FLEX FEMALE, THRU HOLE	
APPROVALS		DATE	
DRAWN	AY	9/16/10	
CHECKED	VW	9/16/10	
APPROVED			
SIZE	PART NO.	TITLE	
X	MPF-XX-V-T-PP-TR	MINI FLEX FEMALE, THRU HOLE	
REF:	S00036T	SCALE:	NTS
REV.		SHEET 1 OF 1	