

MATERIALS

- BODY:**
Phenolic, UL94 V-0
- ACTUATOR:**
Nickel Plated Brass
- BUSHING:**
Nickel Plated Brass
- HOUSING:**
Stainless Steel
- HARDWARE:**
Nickel Plated Steel
- FUNCTION PLATE:**
Stainless Steel
- SPACER PLATE:**
Laminate Board
- SPRING:**
Steel
- PLUNGER:**
Nylon
- MOBILE CONTACT:**
Silver Plated Copper
- MOBILE CONTACT PIVOT:**
Silver Plated Copper
- CONTACTS:**
Silver Alloy Clad Copper
- TERMINALS:**
Brass

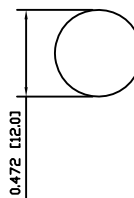
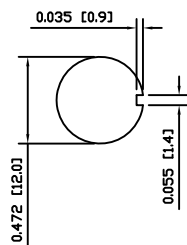
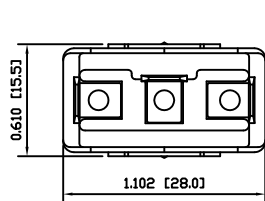
SPECIFICATIONS

- FUNCTION:**
1P2T ON-OFF-ON
- RATINGS:**
ANSI/UL1054 and CAN/CSA C22.2 No.55 (E194579):
20A 125VAC [cURus]
15A 277VAC [cURus]
2HP 125/277VAC [cURus]
- CONTACT RESISTANCE:**
Initial: 50mΩ Max. at 50VAC
- INSULATION RESISTANCE:**
800MΩ Min. at 500VDC
- DIELECTRIC STRENGTH:**
1,500VAC for 1 Minute
- OPERATING LIFE:**
6,000 Cycles [cURus]
- TEMPERATURE:**
Operating: -20°C to 85°C [cURus]
- APPROVALS:**

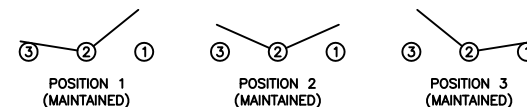


SUGGESTED PANEL CUTOUT

ALTERNATE PANEL CUTOUT



SCHEMATIC



ACTUATOR	A	09/05/26	CAB
BODY	A	09/05/26	CAB
MATERIALS	A	09/05/26	CAB
SPECIFICATIONS	A	09/05/26	CAB
REFERENCE	REV.	DATE	BY

THE INFORMATION CONTAINED IN THIS DOCUMENT IS PROPRIETARY TO E-SWITCH AND IS NOT TO BE COPIED OR TRANSFERRED

A	INITIAL RELEASE	PCRD0051	09/08/05	CAB
REV.	DESCRIPTION	PCR	DATE	DRAWN BY

DIMENSIONS	
INCHES [MILLIMETERS]	
GENERAL TOLERANCES	
±0.008 [±0.2] / ±1'	
SCALE	PROJECTION
DRAWING NOT TO SCALE	1st Angle

ST145D00		
DRAWING NUMBER	DATE	REVISION
34-ST145D00	AUGUST 5, 2009	A