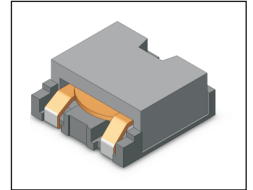


SMT Power Inductor

HMU1342 Type

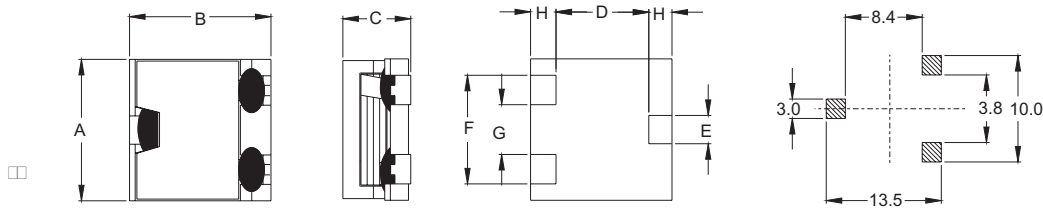
Features

- RoHS compliant.
- Low profile, SMD type.
- High current.
- Magnetic shielded.
- High energy storage and low DCR.
- Provided with embossed carrier tape packing.
- Ideal for power source circuits, DC-DC converter, DC-AC inverters inductor applications.
- In addition to the standard versions shown here, customized inductors are available to meet your exact requirements.



Mechanical Dimension :

RECOMMENDED PAD PATTERNS



UNIT : mm/inch

| | |
|---|-------------------------|
| A | 12.60±0.4 / 0.496±0.016 |
| B | 12.70±0.3 / 0.500±0.012 |
| C | 4.20 / 0.165 Max. |
| D | 8.95 / 0.352 |
| E | 2.50 / 0.098 |
| F | 9.50 / 0.374 |
| G | 4.30 / 0.169 |
| H | 1.90 / 0.075 |

Electrical Characteristics : 25°C, 100KHz, 1V

| PART NO. | L ¹ (uH) | DCR (mΩ) MAX | I _{sat} ² (A _{dc}) | I _{rms} ³ (A _{dc}) |
|-------------|------------------------|-----------------|---|---|
| HMU1342-R35 | 0.35 | 1.5 | 32.0 | 24.0 |
| HMU1342-0R5 | 0.50 | 1.5 | 24.0 | 24.0 |
| HMU1342-0R8 | 0.80 | 4.5 | 22.0 | 18.0 |
| HMU1342-1R1 | 1.10 | 4.5 | 15.0 | 18.0 |
| HMU1342-1R4 | 1.40 | 4.5 | 12.8 | 18.0 |
| HMU1342-1R9 | 1.90 | 4.5 | 9.0 | 18.0 |
| HMU1342-2R2 | 2.20 | 11.0 | 12.3 | 10.0 |
| HMU1342-3R0 | 3.00 | 11.0 | 9.8 | 10.0 |
| HMU1342-4R7 | 4.70 | 21.0 | 8.2 | 7.0 |
| HMU1342-5R6 | 5.60 | 21.0 | 7.6 | 7.0 |
| HMU1342-6R8 | 6.80 | 21.0 | 5.8 | 7.0 |
| HMU1342-7R7 | 7.70 | 21.0 | 4.8 | 7.0 |

1. Tolerance of inductance is ± 20%.
2. I_{sat} is the DC current which cause the inductance drop approximately 20% of is nominal inductance without current.
3. I_{rms} is the DC current which cause the surface temperature of the part increase less than 45°C.
4. Operating temperature : -20°C to 105°C (including self-temperature rise).



DELTA ELECTRONICS, INC.

(TAOYUAN PLANT CPBG) 252, SAN YING ROAD, KUEISAN INDUSTRIAL ZONE, TAOYUAN SHIEN, 333, TAIWAN, R.O.C.
 TEL: 886-3-3591968; FAX: 886-3-3591991
<http://www.deltaww.com>