

# EPIC® Rectangular Connectors

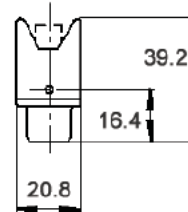
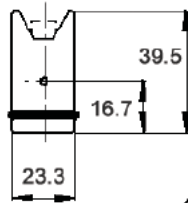
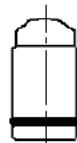


HA Plugs & Receptacles: Screw Terminated Inserts

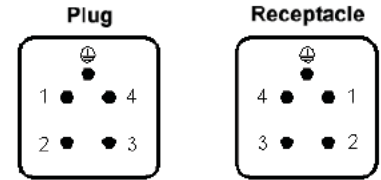
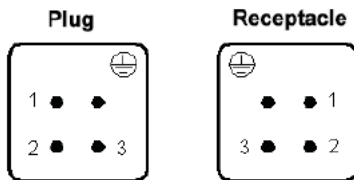
## HA 3/4 Inserts

HA 3

HA 4



All dimensions are in mm.



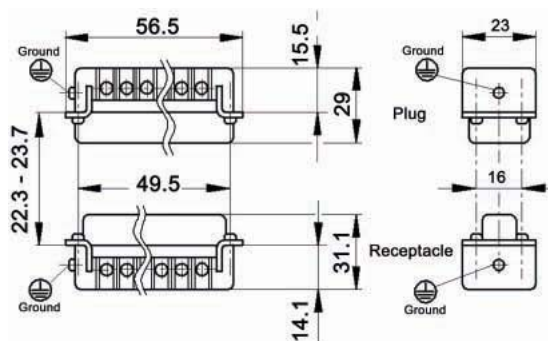
These inserts fit in the HA 3/4 Series Housings.

Description	Plug	Receptacle
HA 3	10420000	10421000
HA 4	10431000	10432000

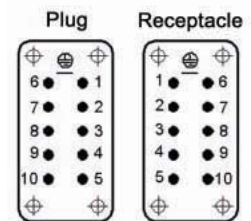


Coding Pin: 10451200

## HA 10 Inserts



View from cable side



All dimensions are in mm.



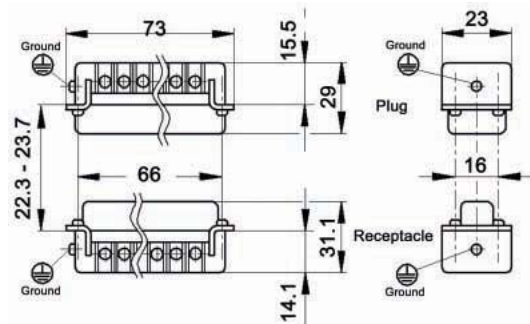
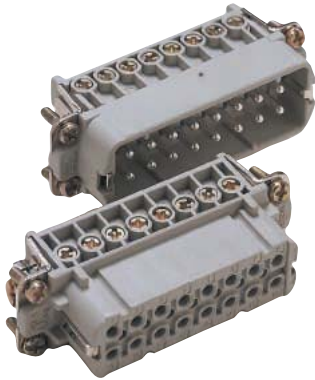
Description	Plug	Receptacle
HA 10 with Wire Protection	10440100	10441100
HA 10 without Wire Protection	10440000	10441000

# EPIC® Rectangular Connectors

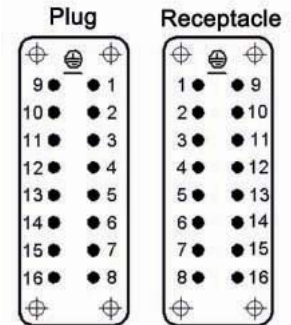


HA Plugs & Receptacles: Screw Terminated Inserts

## HA 16 Inserts



View from cable side

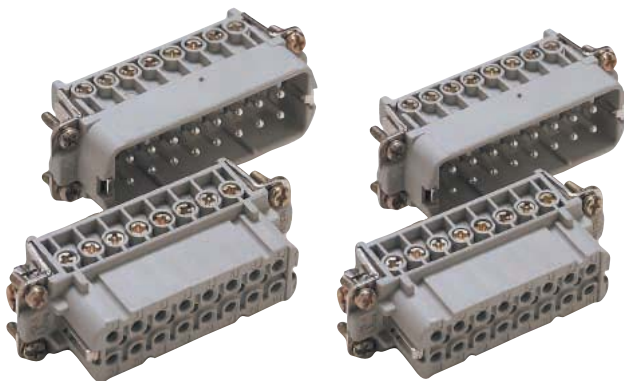


All dimensions are in mm.

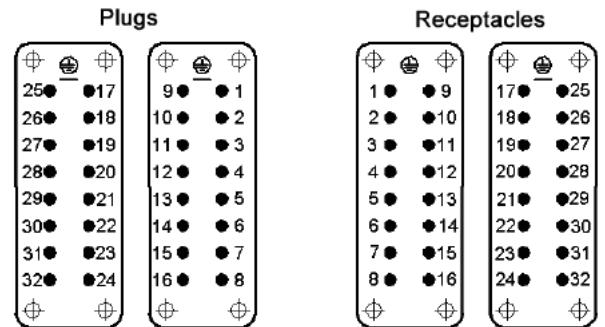


Description	Plug	Receptacle
HA 16 with Wire Protection	10530000	10531000
HA 16 without Wire Protection	10532000	10533000

## HA 32 Inserts



View from cable side



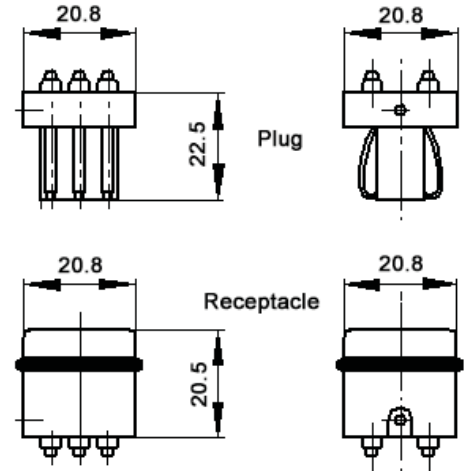
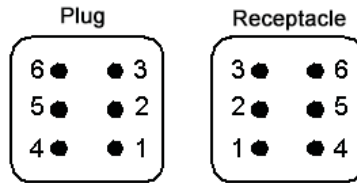
## 2 Sets of HA 16 Inserts

Description	Plug	Receptacle
#1-16 with Wire Protection	10530000	10531000
#17-32 with Wire Protection	10540000	10541000
#1-16 without Wire Protection	10532000	10533000
#17-32 without Wire Protection	10542000	10543000

## STA 6 SCREW TERMINATED INSERTS



View from cable side



All dimensions are in mm.

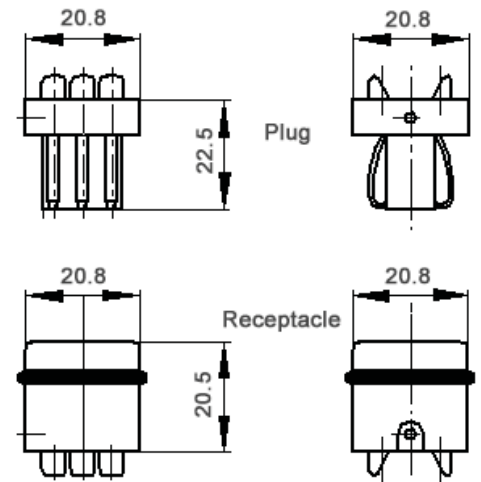
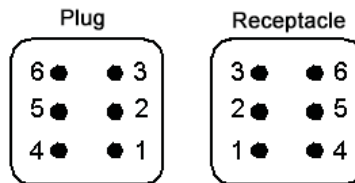
Description	Plug	Receptacle
Screw Termination	10488100	10486100



## SOLDER TERMINATED INSERTS



View from cable side



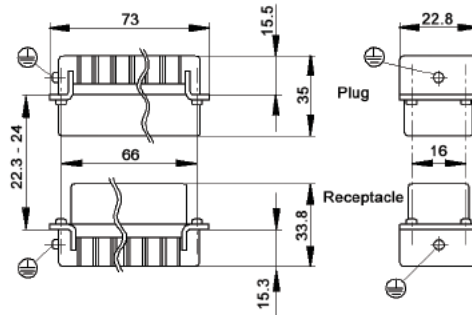
Description	Plug	Receptacle
Solder Termination	10487200	10485200

# EPIC® Rectangular Connectors

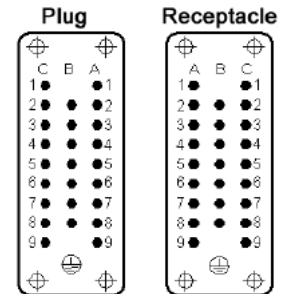
HD Series



## HD 25 CRIMP TERMINATED: STAMPED & FORMED CONTACT INSERTS



View from cable side



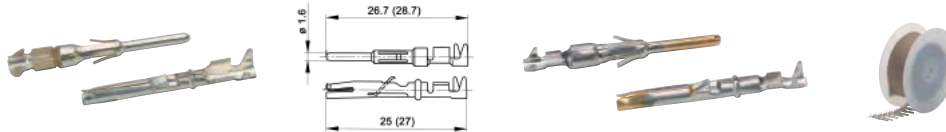
All dimensions are in mm.

Contacts Sold Separately

Plug	Receptacle
11260000	11261000



## STAMPED & FORMED CONTACTS: DIAMETER 1.6 MM



mm <sup>2</sup>	Stripping Length (mm)
0.14 - 0.5	2.5 - 0.5
0.5 - 1.5	3.5 - 0.5
1.5 - 2.5	3.5 - 0.5

		Bags of 100: Silver		Bags of 100: Gold		Reel of 100: Silver Left Hand Feed		Reel of 200: Silver Left Hand Feed	
mm <sup>2</sup>	AWG	Pin	Socket	Pin	Socket	Pin	Socket	Pin	Socket
0.14 - 0.5	26 - 20	11241100	11231100	11243100	11233100	-	-	11240700	11230700
0.5 - 1.5	20 - 16	11221000	11236100	11221300	11238100	-	-	11220700	11235700
1.5 - 2.5	16 - 14	11223500	11228500	-	-	11223000	11228000	-	-

mm <sup>2</sup>	AWG	Reel of 2000: Right Hand Feed- Silver		Reel of 2000: Right Hand Feed- Gold		Reel of 2000: Left Hand Feed- Silver		Reel of 2000: Left Hand Feed- Silver	
		Pin	Socket	Pin	Socket	Pin	Socket	Pin	Socket
0.14 - 0.5	26 - 20	11240000	11230000	-	-	11240400	11230400	11230500	11240500
0.5 - 1.5	20 - 16	11220000	11235000	11220100	11235200	11226000	11226500	-	-
1.5 - 2.5	16 - 14	-	-	-	-	11222700	11227700	-	-

Part number= 1 contact (bags) or 1 reel.



**Crimp Tool**  
11147000



**Locator**  
11147300



**Removal Tool:** 11161000



**Crimp Tool for Reel:**  
11153500



**Crimp Dies**  
0.14-0.5: 11147170  
0.5-1.5: 11147180  
1.5-2.5: 11147190

**Crimp Dies for Reel:**  
0.14-0.5: 11153600  
0.5-1.5: 11153700  
1.5-2.5: 11153800



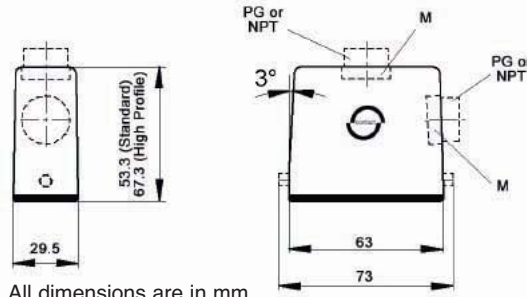
# EPIC® Rectangular Connectors



HA 10 Housings: Single Lever on Base

## TOP & SIDE ENTRY HOODS

### TOP ENTRY



### SIDE ENTRY



All dimensions are in mm.

**Specifications:** DIN 43652  
**Temperature Range:** -40°C to +125°C

**Protection class:** NEMA 4, NEMA 12, IP65  
**Material:** Aluminum alloy, powder coated

## STANDARD PROFILE

Position of Cable Entry	Size of Entry			Part Numbers			Complete your installation with a SKINTOP®, Pg 352			
	PG	NPT	Metric	PG	NPT	Metric	PG- Nylon	PG- Metal	Metric- Nylon	Metric-Metal
Top Entry	13	1/2"	20	10446000	104460NP	19446000	53015130	52015730	53111020	53112020
	16	1/2"	25	10446100	104461NP	19446100	53015140	52015740	53111030	53112030
Side Entry	16	1/2"	20	10445000	104450NP	19445000	53015140	52015740	53111020	53112020
	21	3/4"	25	10445500	104455NP	19445500	53015150	52015750	53111030	53112030

Top Entry Metric hoods do not come with a neck.

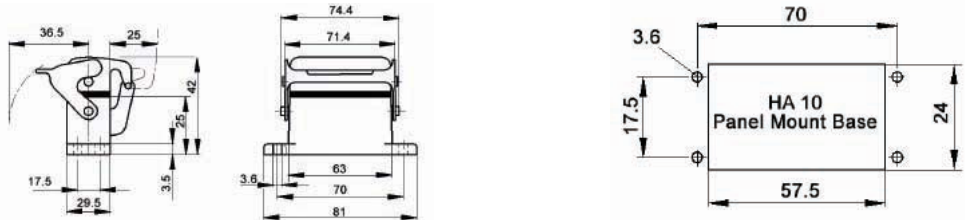
## HIGH PROFILE

Position of Cable Entry	Size of Entry			Part Numbers			Complete your installation with a SKINTOP®, Pg 352			
	PG	NPT	Metric	PG	NPT	Metric	PG- Nylon	PG- Metal	Metric- Nylon	Metric-Metal
Top Entry	16	1/2"	20	70460200	704602NP	79460200	53015140	52015740	53111020	53112020
	21	3/4"	25	70460400	704604NP	79460400	53015150	52015750	53111030	53112030
Side Entry	16	1/2"	20	70462200	704622NP	79462200	53015140	52015740	53111020	53112020
	21	3/4"	25	70462400	704624NP	79462400	53015150	52015750	53111030	53112030

High Profile Metric hoods do not come with a neck.



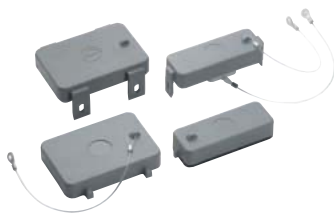
## PANEL MOUNT BASES



Without Dust Cover	With Dust Cover
104420C0	704440C0

All dimensions are in mm.

## DUST COVERS WITH OR WITHOUT ATTACHMENT STRING



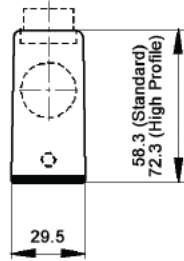
Material:	Thermoplastic Resin	Temperature:	-40°C to +125°C
Description	Part # with string	Part # without string	
HA 10 Panel Mt or Surface Mt Base/ Cable Coupler hoods (includes gasket)	10457500	10457700	
Dust cover for HA 10 Hoods	10457600	10457800	

# EPIC® Rectangular Connectors

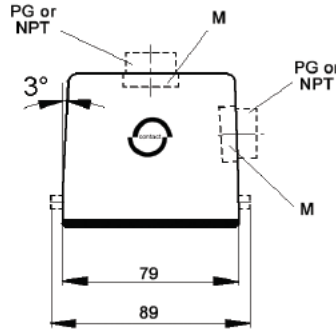


HA 16 Housings: Single Lever on Base

## TOP ENTRY



## HOODS



## SIDE ENTRY



## STANDARD PROFILE

Position of Cable Entry	Size of Entry			Part Numbers			Complete your installation with a SKINTOP®, Pg 352			
	PG	NPT	Metric	PG	NPT	Metric	PG- Nylon	PG- Metal	Metric- Nylon	Metric-Metal
Top Entry	16	1/2"	20	10565000	105650NP	19565000	53015140	52015740	53111020	53112020
	21	3/4"	25	10565200	105652NP	19565300	53015150	52015750	53111030	53112030
Side Entry	16	1/2"	20	10564000	105640NP	19564000	53015140	52015740	53111020	53112020
	21	3/4"	25	10564500	105645NP	19564500	53015150	52015750	53111030	53112030

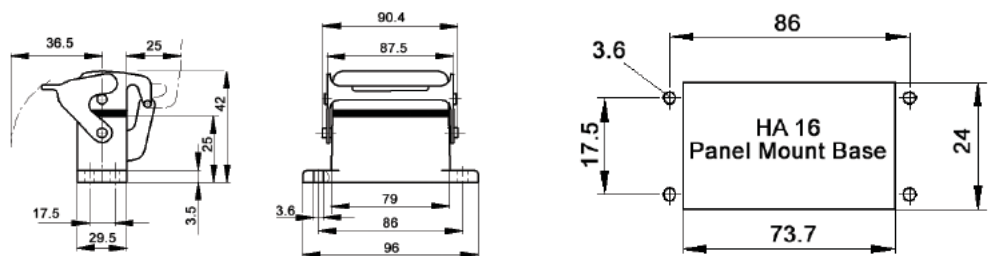
Top Entry Metric hoods do not come with a neck.

## HIGH PROFILE

Position of Cable Entry	Size of Entry			Part Numbers			Complete your installation with a SKINTOP®, Pg 352			
	PG	NPT	Metric	PG	NPT	Metric	PG- Nylon	PG- Metal	Metric- Nylon	Metric-Metal
Top Entry	16	1/2"	20	70490200	704902NP	79490200	53015140	52015740	53111020	53112020
	21	3/4"	25	70490400	704904NP	79490400	53015150	52015750	53111030	53112030
Side Entry	16	1/2"	20	70492200	704922NP	79492200	53015140	52015740	53111020	53112020
	21	3/4"	25	70492400	704924NP	79492400	53015150	52015750	53111030	53112030

High Profile Metric hoods do not come with a neck.

## PANEL MOUNT BASE



Without Dust Cover	With Dust Cover
104620C0	704740C0

## DUST COVERS WITH OR WITHOUT ATTACHMENT STRING



Material:	Thermoplastic Resin	Temperature:	-40°C to +125°C
Description	Part # with string	Part # without string	
HA 16 Panel Mt or Surface Mt Base/ Cable Coupler hoods (includes gasket)	10469500	10469700	
Dust cover for HA 16 Hoods	10469600	10469800	

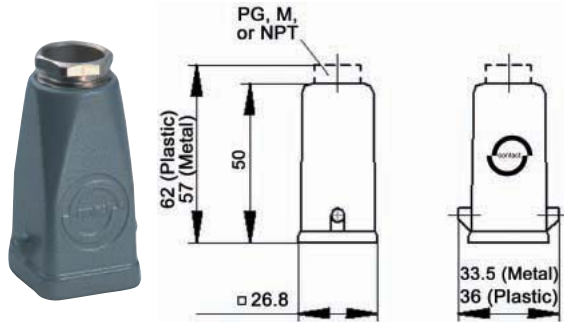
# EPIC® Rectangular Connectors



HA 3/4 Housings: Single Lever on Base

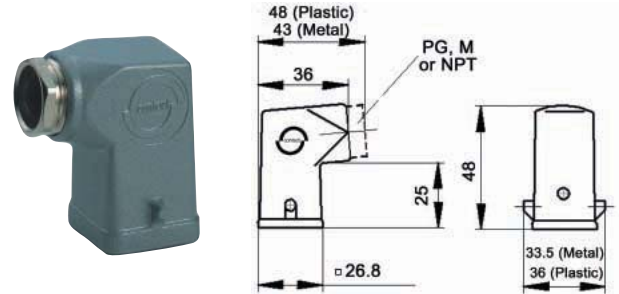
## TOP & SIDE ENTRY HOODS

### TOP ENTRY



All dimensions are in mm.

### SIDE ENTRY



**Specifications:** DIN 43652  
**Temperature Range:** -40°C to +125°C

**Protection class:** NEMA 4, NEMA 12, IP65  
**Material:** Aluminum alloy, powder coated

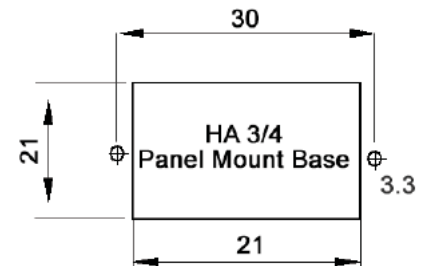
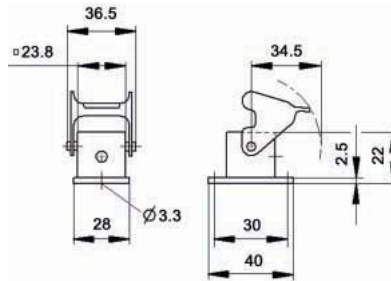
### Top Entry Hoods

Material	Size of Entry			Without Cable Gland		With Cable Gland	
	PG	NPT	Metric	NPT	Metric	PG	Metric
Zinc Die Cast	11	1/2"	20	105121NP	-	10426500	19426500
Black Plastic	11	1/2"	20	104255NP	19425500	10426700	-
Grey Plastic	11	1/2"	20	104260NP	19426000	10426400	-

### Side Entry Hoods

Material	Size of Entry			Without Cable Gland		With Cable Gland	
	PG	NPT	Metric	NPT	Metric	PG	Metric
Zinc Die Cast	11	1/2"	20	105123NP	-	10427500	19427500
Black Plastic	11	1/2"	20	104273NP	19427300	10620600	-
Grey Plastic	11	1/2"	20	104270NP	19427000	10427100	-

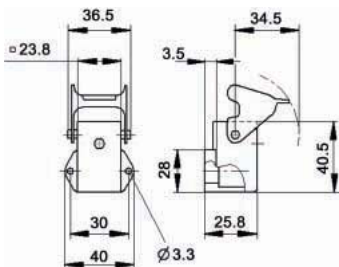
## PANEL MOUNT BASES



Gray Metal	Black Plastic	Gray Plastic
10422500	10422200	10422000

All dimensions are in mm.

## ANGLED PANEL MOUNT BASES



Gray Metal	Black Plastic	Gray Plastic
10423500	10423100	10423000

