

## AH291

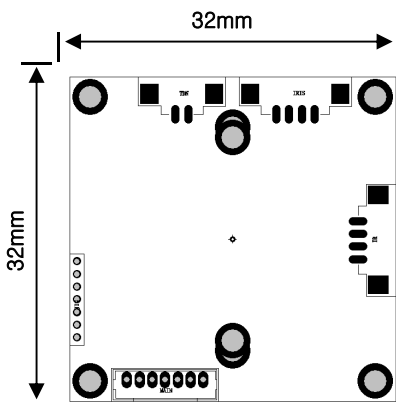
2.1Mega pixel Camera



### Features

- 1 / 2.8" SONY CMOS Sensor
- HD Resolution : 1080P
- D-WDR (Digital WDR)
- DNR ( Digital Noise Reduction: 2D + 3D)
- Privacy Mask Function
- Motion Detection
- Defog : Defogging foggy video image
- Dimension : 32mm x 32mm

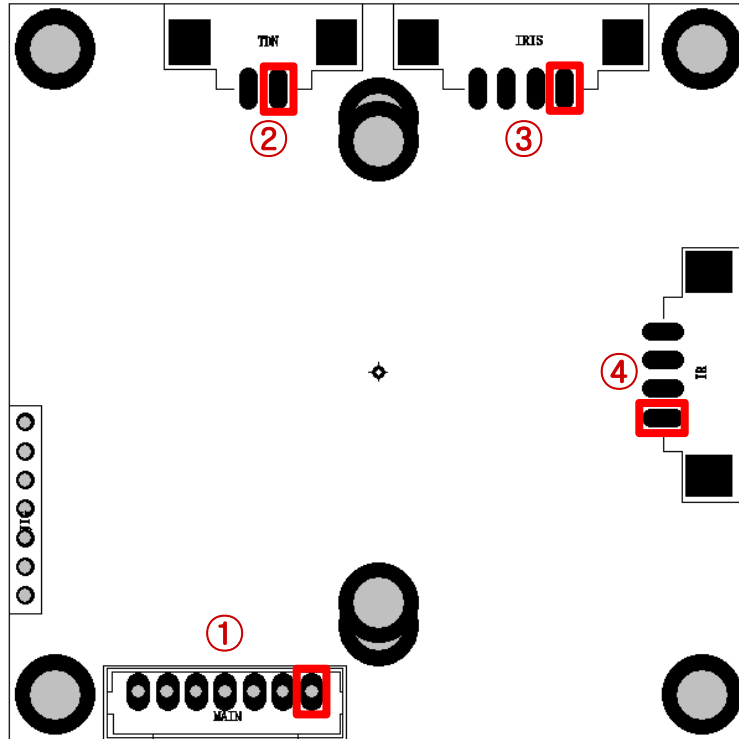
### Dimensions



### Specifications

| AH291               |                                                                                                                   |
|---------------------|-------------------------------------------------------------------------------------------------------------------|
| Image Device        | 1 / 2.8" 2.1 Mega Pixel SONY CMOS                                                                                 |
| Scanning system     | Progressive                                                                                                       |
| Resolution          | ANALOG HD : 1080P 30FPS<br>ANALOG CVBS :1280H NTSC / PAL                                                          |
| Total Pixels        | 1945(H) x 1109(V) = 2.16 M pixel                                                                                  |
| Effective Pixels    | 1945(H) x 1097(V) = 2.13 M pixel                                                                                  |
| Shutter Speed       | Auto / Manual ( 1/50 ~ 1/60,000 )                                                                                 |
| Min. illumination   | Color : 1.0 Lux / BW : 0.5 Lux                                                                                    |
|                     | Color DSS: 0.002 Lux / BW DSS : 0.001 Lux                                                                         |
| S/N Ratio           | More Than 50dB (AGC off)                                                                                          |
| Lens                | DC / Manual                                                                                                       |
| AGC                 | Off / 0 ~ 15                                                                                                      |
| SENS UP             | Off / x2 ~ x30                                                                                                    |
| DAY & NIGHT         | Auto / COLOR / B&W / EXTERN                                                                                       |
| WHITE BALANCE       | ATW / AWC / INDOOR / OUTDOOR / Manual /AWB                                                                        |
| Backlight           | Off/ BLC / HSBLC                                                                                                  |
| MIRROR              | Off / H / V / H&V / ROTATE                                                                                        |
| D-WDR               | Off / 0 ~ 8                                                                                                       |
| DNR                 | Off / LOW / Middle / High                                                                                         |
| PRIVACY             | 4 Masks                                                                                                           |
| MOTION              | Off / On                                                                                                          |
| DEFOG               | Off / Auto                                                                                                        |
| Operating Temp./Hum | -10℃ ~ +50℃ / Max 90%RH                                                                                           |
| Storage Temp./Hum   | -20℃ ~ + 60℃ / Max 90%RH                                                                                          |
| Language            | English/ Chinese/ Germany/ French/ Italian/ Spanish/<br>Polish/ Russain/ Portuguese/ Netherlands/ Turkish / JAPAN |
| Power Input         | DC 12V                                                                                                            |
| Video Output        | AHD, TVI, CVI, CVBS, CVBS                                                                                         |
| Size                | 32 x 32mm                                                                                                         |

## Connector Pin map



| Connector | Pin number | Pin name | Description                  |
|-----------|------------|----------|------------------------------|
| ①         | 1          | GND      | Board Ground                 |
|           | 2          | 12V      | DC 12V input                 |
|           | 3          | VBS      | Composite Video Output       |
|           | 4          | GND      | Board Ground                 |
|           | 5          | E-V      | Extra Composite Video Output |
|           | 6          | AD/KEY   | AD/KEY                       |
|           | 7          | MD       | Motion Detection             |
| ②         | 1          | TDM MA + | DRIVE1                       |
|           | 2          | TDM MA - | DRIVE2                       |
| ③         | 1          | DMP+     | DAMP+                        |
|           | 2          | DMP-     | DAMP-                        |
|           | 3          | DRV+     | DRIVE+                       |
|           | 4          | GND      | Board Ground                 |
| ④         | 1          | 12V      | DC 12V Output                |
|           | 2          | GND      | Board Ground                 |
|           | 3          | IR       | Day & Night Input (HIGH/LOW) |
|           | 4          | CDS      | ADC Input                    |

## Address

Rm.915, Keumkang Hightech Valley, 177, Sagimakgol-ro Jungwon-ku, Seongnam-si, Gyeonggi-do, Korea