

SF2000A-AS Series (RoHS Compliant)

Single-phase 2-line 250VAC

Common Mode Wide band & High attenuation
Superior RF characteristics with feed-through tube output



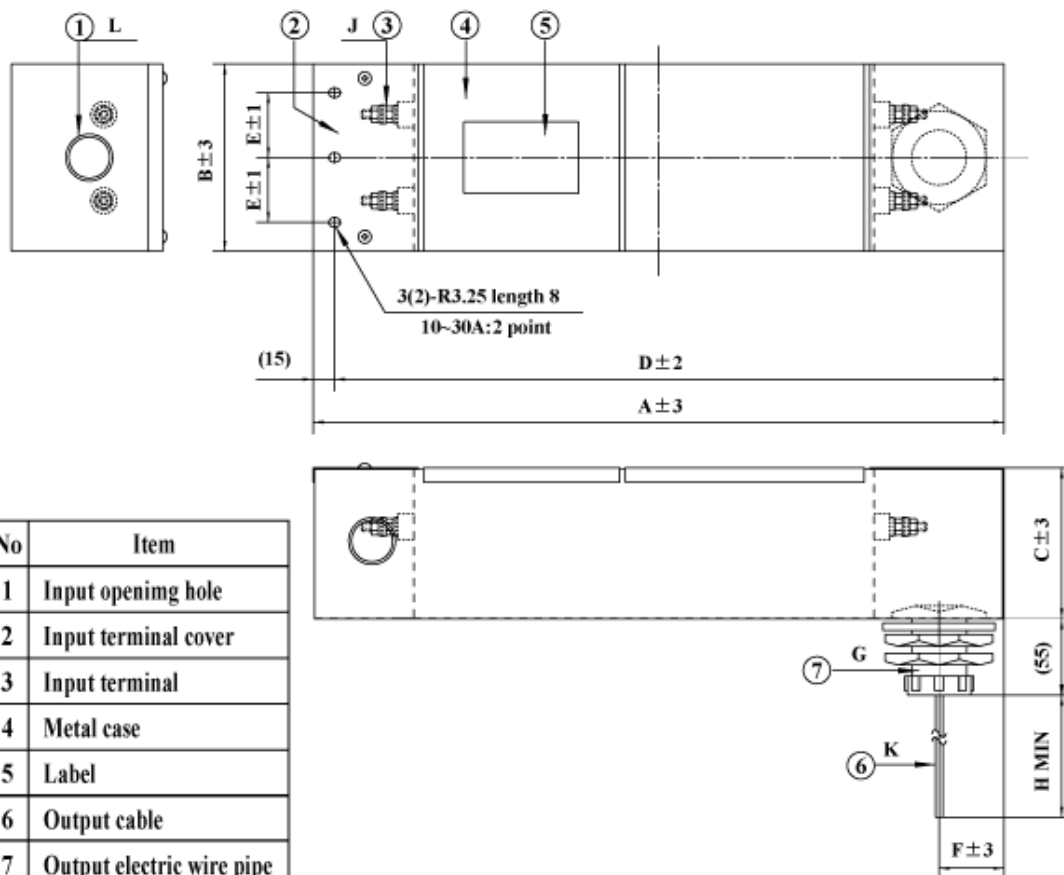
Applications

For the power supply in EMC Anechoic, Shielded Chamber

Specifications

Part No.	Rated Current	Leakage Current	Weight	Dimensions [mm]										
				A	B	C	D	E	F	G	H	J	K	L
SF2010A-AS	10A	155mA	5.3kg	475	100	75	460	60	35	CTC25	500	M4	AWG12	φ28.5
SF2020A-AS	20A	155mA	5.3kg	475	100	75	460	60	35	CTC25	500	M4	AWG12	φ28.5
SF2030A-AS	30A	155mA	5.5kg	475	100	75	460	60	35	CTC25	500	M5	AWG10	φ28.5
SF2040A-AS	40A	500mA	8.6kg	480	130	105	465	45	45	CTC39	500	M6	AWG8	φ28.5
SF2050A-AS	50A	500mA	8.8kg	480	130	105	465	45	45	CTC39	500	M6	AWG6	φ28.5
SF2060A-AS	60A	500mA	9.0kg	480	130	105	465	45	45	CTC39	500	M6	AWG6	φ28.5
SF2100A-AS	100A	500mA	16.5kg	640	180	125	625	70	45	CTC39	500	M10	MLFC38mm ^φ	φ35
Rated Voltage	250VAC max													
Leakage Current	(Please use Insulation Transformer together)													
Ambient temp.	-20 up to 50 Deg. C													

fig. 1



No	Item
1	Input opening hole
2	Input terminal cover
3	Input terminal
4	Metal case
5	Label
6	Output cable
7	Output electric wire pipe

Characteristics (Typical)

