

PLEASE CHECK WWW.MOLEX.COM FOR LATEST PART INFORMATION

Part Number: [1061162100](#)
Status: **Active**
Overview: [Optical EMI Shielding Adapters](#)
Description: EMI SC Adapter, Simplex, Metal Body, Screw Mount Style, Shutter

Documents:

[Drawing \(PDF\)](#) [RoHS Certificate of Compliance \(PDF\)](#)

General

Product Family	Fiber Optic Adapters
Series	106116
Component Type	EMI Shielding
Mode	Multimode, Singlemode
Overview	Optical EMI Shielding Adapters
Product Name	SC
Type	Adapter
UPC	822350277211

Physical

Alignment Sleeve	Ceramic
Angled Physical Contact (APC)	N/A
Color - Resin	N/A
Ferrule Material	Ceramic
Gender	Female-Female
Material - Housing	Die-Cast
Mounting Style	Screws
Net Weight	13.772/g
Orientation	Straight
Panel Mount	With Flange
Ports	1
Shutter	One Side

Electrical

Shield Type	EMI Gasket
Shielded	Yes

Solder Process Data

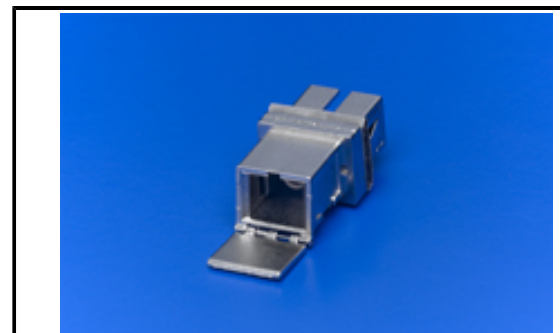
Lead-freeProcess Capability	N/A
-----------------------------	-----

Material Info

Engineering Number	861162100
--------------------	-----------

Reference - Drawing Numbers

Sales Drawing	SD-106116-2100
---------------	----------------



Series image - Reference only

EU ELV

Not Relevant

EU RoHS

Compliant

REACH SVHC

Not Contained Per -
ED/30/2017 (7 July
2017)

Halogen-Free

Status

Not Low-Halogen

**Need more information on product
environmental compliance?**

Email productcompliance@molex.com
Please visit the [Contact Us](#) section for any
non-product compliance questions.

China ROHS

ELV

RoHS Phthalates

Green Image

Not Relevant

Not Contained

Search Parts in this Series

[106116 Series](#)

PLEASE CHECK WWW.MOLEX.COM FOR LATEST PART INFORMATION