

## Han C axial module, male 2,5-8mm<sup>2</sup>

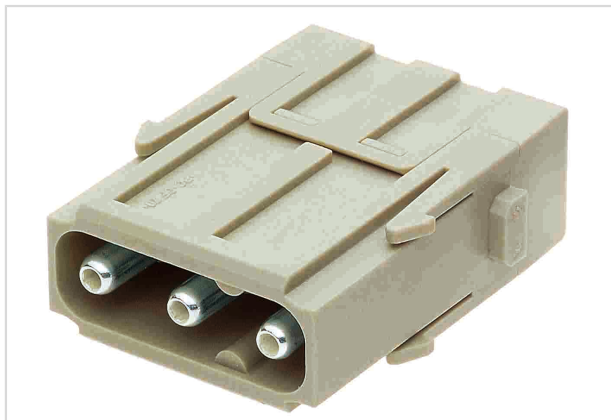


Image is for illustration purposes only. Please refer to product description.

Part number	09 14 003 2601
Specification	Han C axial module, male 2,5-8mm <sup>2</sup>
HARTING eCatalogue	<a href="https://b2b.harting.com/09140032601">https://b2b.harting.com/09140032601</a>

### Identification

Category	Modules
Series	Han-Modular <sup>®</sup>
Type of module	Han <sup>®</sup> C module

### Version

Termination method	Axial screw termination
Gender	Male
Number of contacts	3

### Technical characteristics

Conductor cross-section	2.5 ... 8 mm <sup>2</sup>
Rated current	40 A
Rated voltage	690 V
Rated impulse voltage	8 kV
Pollution degree	3
Rated current acc. to UL	40 A
Rated voltage acc. to UL	600 V
Insulation resistance	>10 <sup>10</sup> Ω
Contact resistance	≤0.3 mΩ
Stripping length	5 mm @ 2.5 mm <sup>2</sup>
	5 mm @ 4 mm <sup>2</sup>
	8 mm @ 6 mm <sup>2</sup>



Pushing Performance

## Technical characteristics

Tightening torque	1.5 Nm @ 2.5 mm <sup>2</sup>
	1.5 Nm @ 4 mm <sup>2</sup>
	2 Nm @ 6 mm <sup>2</sup>
Limiting temperature	-40 ... +125 °C
Mating cycles	≥500

## Material properties

Material (insert)	Polycarbonate (PC)
Colour (insert)	RAL 7032 (pebble grey)
Material (contacts)	Copper alloy
Surface (contacts)	Silver plated
Material flammability class acc. to UL 94	V-0
RoHS	compliant with exemption
RoHS exemptions	6(c): Copper alloy containing up to 4 % lead by weight
ELV status	compliant with exemption
China RoHS	50
REACH Annex XVII substances	No
REACH ANNEX XIV substances	No
REACH SVHC substances	Yes
REACH SVHC substances	Lead
ECHA SCIP number	5dbb3851-b94e-4e88-97a1-571845975242
California Proposition 65 substances	Yes
California Proposition 65 substances	Nickel Lead

## Specifications and approvals

Specifications	EN 60664-1
	IEC 61984
Approvals	DNV GL
UL / CSA	UL 1977 ECBT2.E235076
	UL 2237 PVVA2.E318390
	CSA-C22.2 No. 182.3 PVVA8.E318390

## Commercial data

Packaging size	2
Net weight	32 g



Pushing Performance

## Commercial data

Country of origin	Germany
European customs tariff number	85366990
eCl@ss	27440217 Module for industrial connectors (power/signals)