

10 9 8 7 6 5 4 3 2 1

F

E

D

C

B

A

F

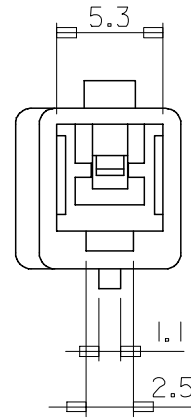
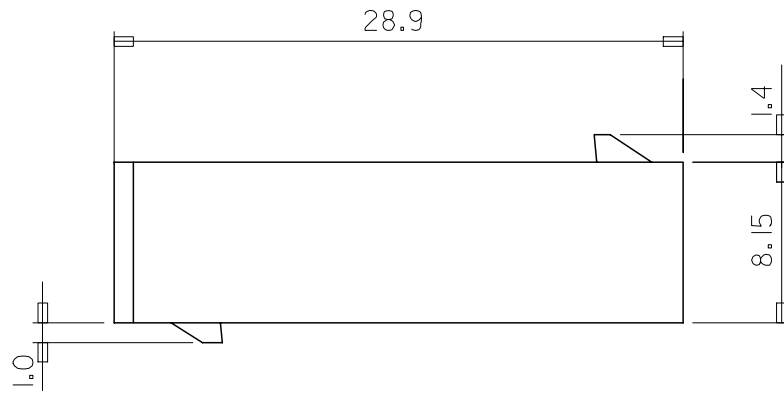
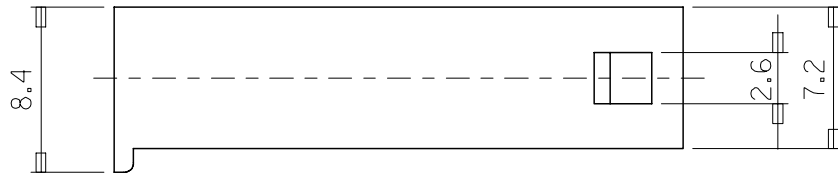
E

D

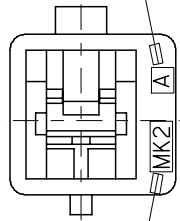
C

B

A



CAV. NO. (A, B..)



TRADE MARK  
(MK2)

NOTES

1. MATERIAL & COLOR : SEE TABLE
2. MATING HOUSING: 35151-0110
3. APPLICABLE TERMINAL: 35745-0\*10
4. APPLICABLE TPA: 35182-019\*

NO	PRODUCT		MATERIAL	
	PART NO	MATERIAL NO	COLOR	DESCRIPTION
1	35150-0100	351500100	NATURAL	PBT (UL94V-0)
2	35150-0102	351500102	RED	
3	35150-0104	351500104	BLUE	PBT/PC
4	35150-0109	351500109	NATURAL	

REVISED  
EC NO: KOR2008-0048  
87478  
DRWN: JHPARK01 2007/09/10  
CHKD: WY. YANG 2007/09/10  
APPR: YUNSIKKIM 2007/09/10

QUALITY SYMBOLS  
 =0  
 =0

GENERAL TOLERANCES (UNLESS SPECIFIED)

	mm	INCH
4 PLACES	± .005	± .0002
3 PLACES	± .008	± .0003
2 PLACES	± .015	± .0006
1 PLACE	± 0.3	± .0118

ANGULAR ± 1 °

DRAFT WHERE APPLICABLE  
MUST REMAIN WITHIN DIMENSIONS

DIMENSION STYLE  
MM ONLY

DRAWN BY WY. YANG  
DATE  
CHECKED BY BK. CHOI  
DATE  
APPROVED BY CW. LEE  
DATE

MATERIAL NO.  
SIZE A3

SCALE 4:1  
DESIGN UNITS METRIC  
THIRD ANGLE PROJECTION

TITLE  
.070 W/W  
RECEPTACLE HSG-1P

MOLEX INCORPORATED

DOCUMENT NO. SD-35150-0100  
SHEET NO. 1 OF 01

THIS DRAWING CONTAINS INFORMATION THAT IS PROPRIETARY TO MOLEX INCORPORATED AND SHOULD NOT BE USED WITHOUT WRITTEN PERMISSION

9 8 7 6 5 4 3 2 1