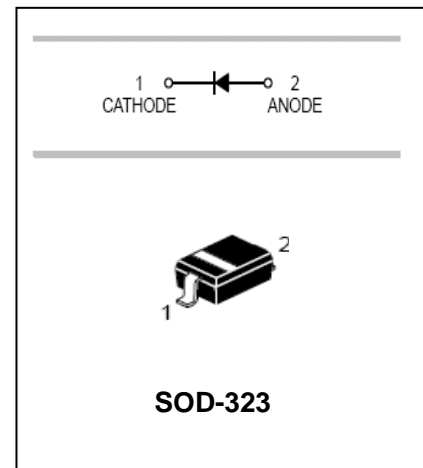


Silicon Epitaxial Planar Diode

1SS404

FEATURES

- Small surface mounting type
- Fast reverse recovery time: $I_R=50\mu A(\text{Max.})$
- Small total capacitance : $C_T=46\text{pF}(\text{typ.})$
- Excellent in forward current and forward voltage characteristics : $V_F=0.8\text{V}(\text{Typ.})$



APPLICATIONS

- High speed switching

ORDERING INFORMATION

Type No.	Marking	Package Code
1SS404	S51	SOD-323

MAXIMUM RATING @ $T_a=25^\circ\text{C}$ unless otherwise specified

Parameter	Symbol	Limits	Unit
Peak reverse voltage	V_{RM}	25	V
DC Reverse Voltage	V_R	20	V
Average Rectified Output Current	I_O	300	mA
Power Dissipation	P_D	200	mW
Junction temperature	T_j	125	$^\circ\text{C}$
Storage temperature	T_{STG}	-55 to +125	$^\circ\text{C}$

ELECTRICAL CHARACTERISTICS @ $T_a=25^\circ\text{C}$ unless otherwise specified

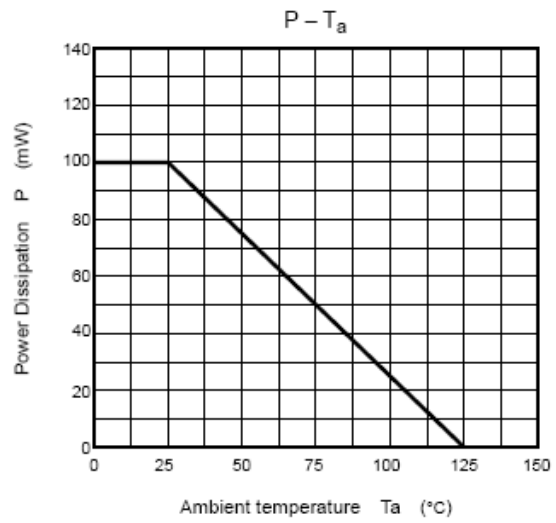
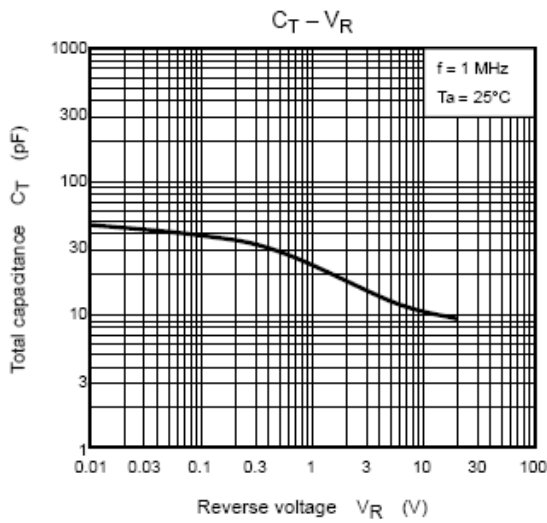
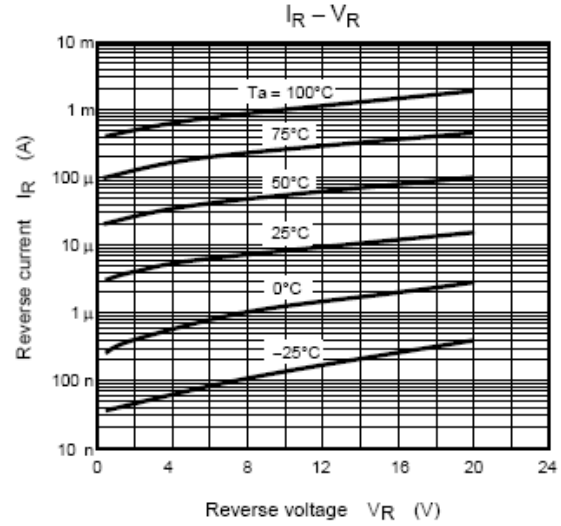
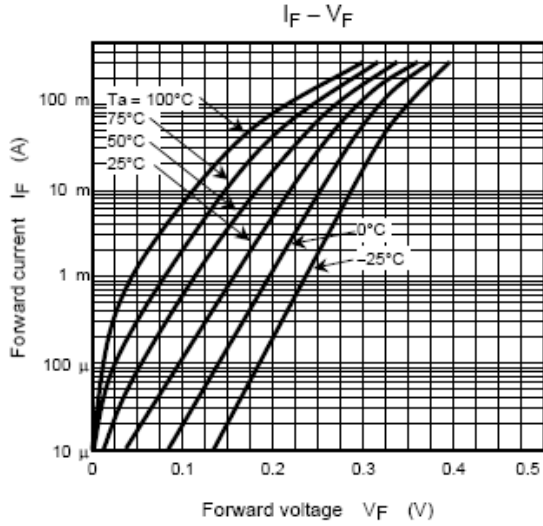
Parameter	Symbol	Min.	TYP.	Max.	Unit	Conditions
Forward voltage	V_F		0.16		V	$I_F=1\text{mA}$
			0.22			$I_F=10\text{mA}$
			0.38	0.45		$I_F=300\text{mA}$
Reverse current	I_R			50	μA	$V_R=20\text{V}$
Capacitance between terminals	C_T			46	pF	$V_R=0\text{V}, f=1\text{MHz}$



Silicon Epitaxial Planar Diode

1SS404

TYPICAL CHARACTERISTICS @ $T_a=25^\circ\text{C}$ unless otherwise specified



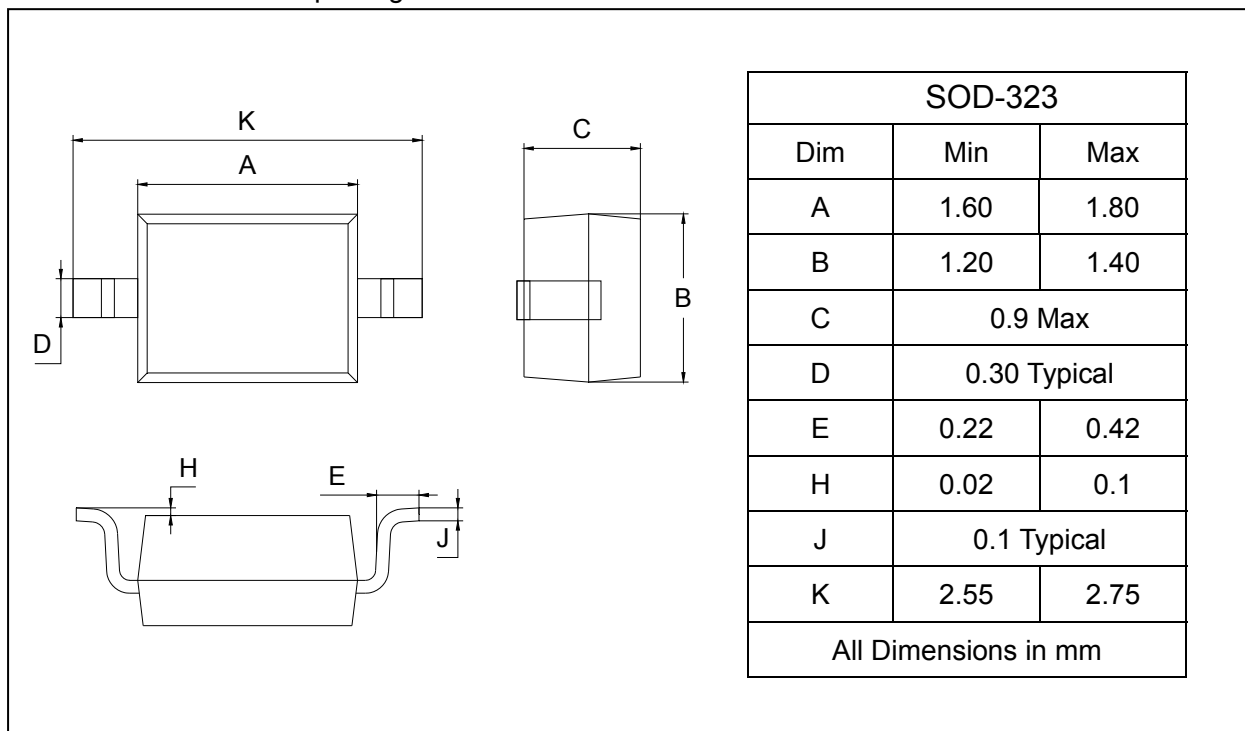
Silicon Epitaxial Planar Diode

1SS404

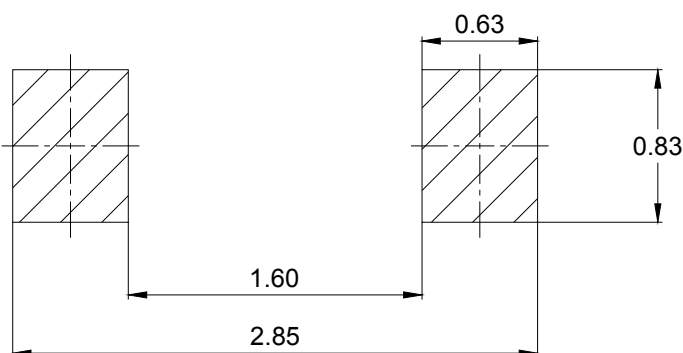
PACKAGE OUTLINE

Plastic surface mounted package

SOD-323



SOLDERING FOOTPRINT



Unit : mm

PACKAGE INFORMATION

Device	Package	Shipping
1SS404	SOD-323	3000/Tape&Reel