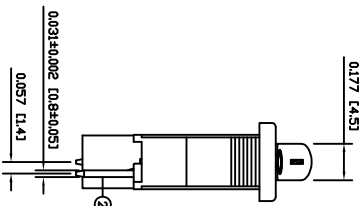
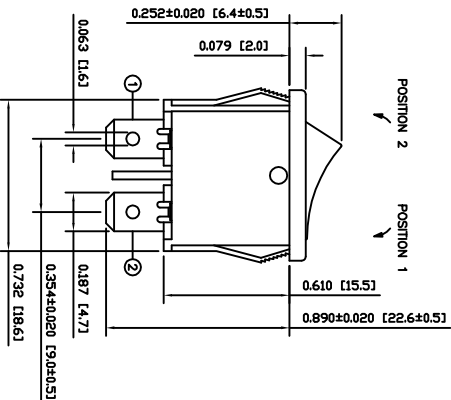
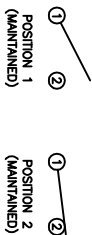


0.378 [9.6]



**SCHEMATIC**



**SPECIFICATIONS**

**FUNCTION:**  
1P1T OFF-ON

**RATINGS:**  
ANSI/UL 1054 and CAN/CSA C22.2 No. 55 (E194579):  
10A 125VAC [UR, CLR]  
EN 61058-1:2002:  
6(2)A 250V~  $\mu$  1E4 1125/55 [ENEC14, SEMKO]




**CONTACT RESISTANCE:**  
Initial: 50m $\Omega$  Max. at 50VAC

**INSULATION RESISTANCE:**  
100k $\Omega$  Min. at 500VDC

**DIELECTRIC STRENGTH:**  
1,500VAC for 1 Minute

**ELECTRICAL LIFE:**  
6,000 Cycles [UR, CLR]  
10,000 Cycles [ENEC14, SEMKO]

**TEMPERATURE:**  
Operating: -20°C to 105°C [UR, CLR]  
Opening: -20°C to 125°C [ENEC14, SEMKO]

**APPROVALS:**  



**COMPLIANT**

**COLORS AND MARKINGS**

**BODY:**  
Black

**ACTUATOR:**  
Red

**MARKINGS:**  
I/O Vertical (1)

**MARKING COLOR:**  
White

**MATERIALS**

**BODY:**  
Polyamide 6/6 (PA66), UL94 V-2

**ACTUATOR:**  
Polyamide 6/6 (PA66), UL94 V-2

**MOBILE CONTACT:**  
Silver Plated Copper

**CONTACTS:**  
Silver Alloy

**TERMINALS:**  
Silver Plated Copper

**SUGGESTED PANEL CUTOUT**

PANEL THICKNESS	X
0.030~0.049 [0.75~1.25]	0.756 [19.2]
0.049~0.079 [1.25~2.00]	0.764 [19.4]
0.079~0.118 [2.00~3.00]	0.772 [19.6]



ACTUATOR BODY COLORS MATERIALS SPECIFICATIONS REFERENCE	REV.	DATE	BY
A	09/07/27	CAB	
A	09/07/27	CAB	
A	09/07/27	CAB	
A	09/07/27	CAB	

THE INFORMATION CONTAINED IN THIS DOCUMENT IS PROPRIETARY TO E-SWITCH-LAMB INDUSTRIES AND IS NOT TO BE COPIED OR TRANSMITTED
1
2
3
4
5
6
7
8

INITIAL RELEASE DESCRIPTION	DATE	BY
2014	9/20/11	BSL
PCB		DRWN BY

DIMENSIONS INCHES [MILLIMETERS]	SCALE	PROJECTION
GENERAL TOLERANCES ±0.008 [±0.2] / ±1'	DRAWING NOT TO SCALE	1st Angle

**E-SWITCH**

**LAMB INDUSTRIES**

RD11131921

DATE: September 20, 2011

REVISION: A