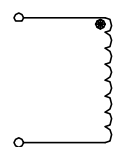


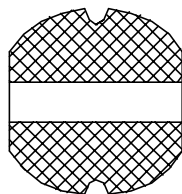
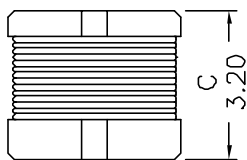
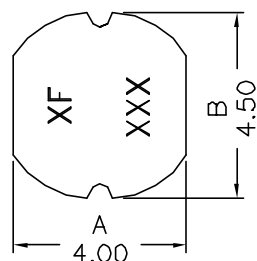
XFSDR43-XXX SERIES INDUCTORS

- * LOW PROFILE SMD TYPE FOR HIGH CURRENT APPLICATION
- * TAPE AND REEL PACKAGING FOR HIGH VOLUME MANUFACTURING
2000 PCS PER 13" REEL
- * FOR DC/DC CONVERTERS, DC/AC INVERTERS, VRM APPLICATIONS
- * TEMP. RISE; 30°C TYPICAL ABOVE 60°C AMBIENT
- * OPERATING TEMP.: -40°C TO +125°C
- * FLAMMABILITY: UL94V-0
- * RoHS COMPLIANT COMPONENT

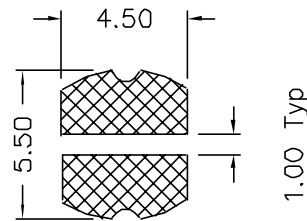
Schematic:



Mechanical Dimensions:



Suggested Pad Layout



TOLERANCE:
.xx ±0.30
Dimensions in mm

Part Number	INDUCTANCE uH±20%	TEST FREQ. KHz	RDC Ohms Max	IDC A Max
XFSDR43-1R0 □	1.00	100	0.033	3.80
XFSDR43-1R4 □	1.40	100	0.038	3.30
XFSDR43-1R8 □	1.80	100	0.042	2.91
XFSDR43-2R2 □	2.20	100	0.047	2.60
XFSDR43-2R7 □	2.70	100	0.052	2.43
XFSDR43-3R3 □	3.30	100	0.058	2.15
XFSDR43-3R9 □	3.90	100	0.076	1.98
XFSDR43-4R7 □	4.70	100	0.094	1.70
XFSDR43-5R6 □	5.60	100	0.101	1.60
XFSDR43-6R8 □	6.80	100	0.117	1.41
XFSDR43-8R2 □	8.20	100	0.132	1.26
XFSDR43-100 □	10.00	100	0.182	1.15
XFSDR43-120 □	12.00	100	0.210	1.05
XFSDR43-150 □	15.00	100	0.235	0.92
XFSDR43-180 □	18.00	100	0.338	0.84
XFSDR43-220 □	22.00	100	0.378	0.76
XFSDR43-270 □	27.00	100	0.522	0.71
XFSDR43-330 □	33.00	100	0.540	0.64
XFSDR43-390 □	39.00	100	0.587	0.59
XFSDR43-470 □	47.00	100	0.844	0.54
XFSDR43-560 □	56.00	100	0.937	0.50
XFSDR43-680 □	68.00	100		0.46

1. INDUCTANCE TEST CONDITIONS: 100KHz 100mV

2. □ Please specify inductance tolerance (K±10%,L±15%,M±20%,N±30%,J±5%), and need to stamp the □ tolerance on the end of the P/N in the marking, except tolerance M.