

**PLEASE CHECK WWW.MOLEX.COM FOR LATEST PART INFORMATION**

**Part Number:** [0008580135](#)  
**Status:** **Active**  
**Overview:** [kk](#)  
**Description:** KK® Crimp Terminal 8818, 18-22 AWG, Reel, Phosphor Bronze Selective Gold (Au)

**Documents:**

[Drawing \(PDF\)](#) [RoHS Certificate of Compliance \(PDF\)](#)  
[Product Specification PS-08-50 \(PDF\)](#)

**General**

Product Family	Crimp Terminals
Series	<a href="#">8818</a>
Crimp Quality Equipment	Yes
Overview	<a href="#">kk</a>
Product Name	KK®

**Physical**

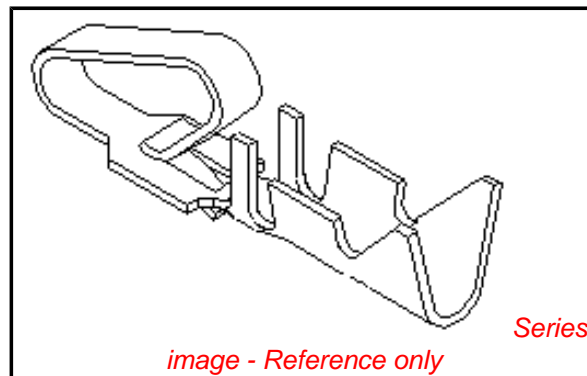
Gender	Female
Material - Metal	Phosphor Bronze
Material - Plating Mating	Gold
Material - Plating Termination	Gold
Packaging Type	Reel
Plating min: Mating (µin)	15
Plating min: Mating (µm)	0.375
Plating min: Termination (µin)	2
Plating min: Termination (µm)	0.05
Termination Interface: Style	Crimp or Compression
Wire Insulation Diameter	2.41mm (.095") max.
Wire Size AWG	18, 20, 22
Wire Size mm²	N/A

**Material Info**

Old Part Number	8818-A(550)
-----------------	-------------

**Reference - Drawing Numbers**

Product Specification	PS-08-50
Sales Drawing	SD-8818



**EU RoHS**

**ELV and RoHS Compliant**  
**REACH SVHC**  
**Contains SVHC: No**  
**Halogen-Free**  
**Status**  
**Not Reviewed**

**China RoHS**



**Need more information on product environmental compliance?**

Email [productcompliance@molex.com](mailto:productcompliance@molex.com)  
 For a multiple part number RoHS Certificate of Compliance, [click here](#)

Please visit the [Contact Us](#) section for any non-product compliance questions.

**Search Parts in this Series**

[8818Series](#)

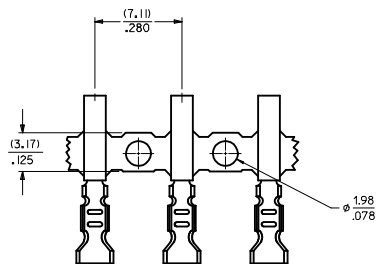
**Application Tooling | FAQ**

*Tooling specifications and manuals are found by selecting the products below. Crimp Height Specifications are then contained in the Application Tooling Specification document.*

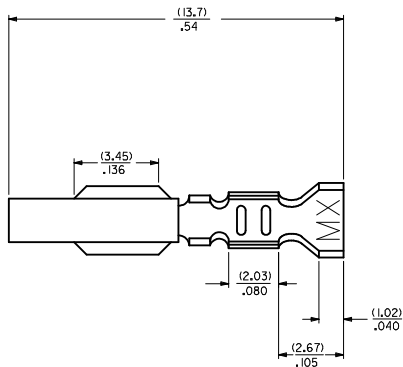
**Global**

Description	Product #
Mini-Mac™ Applicator	<a href="#">0638881100</a>
Hand Crimper	<a href="#">0638117500</a>

**PLEASE CHECK WWW.MOLEX.COM FOR LATEST PART INFORMATION**



CHAIN FORM  
SCALE 5:1



LEGEND

88 IB \*\* \*(\*) \*

**MATERIAL**  
(.27)/.0106 THK.  
BLANK= BRASS  
A= PHOS BRONZE

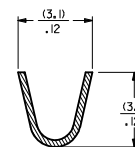
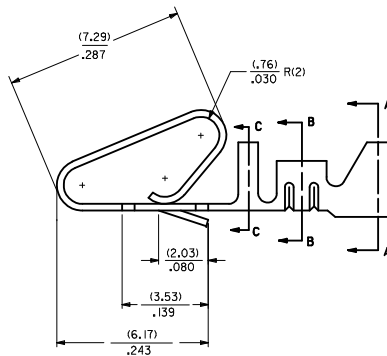
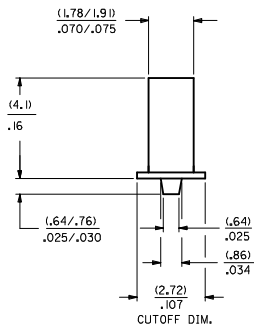
**WINDING SPEC**  
BLANK= PER ES-339-B  
L=LOOSE

**PLATING**  
SEE NOTE 2

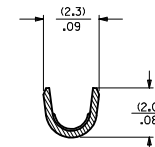
**OPTION CODE**  
BLANK=AS SHOWN

EDP NO.	ENGINEERING NO.
08-56-0187	88 IB-(50 I)
08-56-0188	88 IB-(50 IIL)
	88 IB-(555)
	88 IB-(555)IL
08-50-0008	88 IB-(P909)
08-50-0023	88 IB-(P909)IL
40-01-1181	88 IB-(999)
40-01-1182	88 IB-A(999)
08-50-0705	88 IB-A(102)
08-50-0706	88 IB-A(102)IL
08-65-0128	88 IB-A(555)
08-65-0129	88 IB-A(555)IL
08-52-0131	88 IB-A(P909)
08-52-0132	88 IB-A(P909)IL
08-58-0135	88 IB-A(550)
08-58-0136	88 IB-A(550)IL

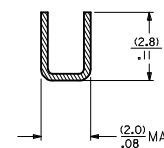
- NOTES:
- MATERIAL: SEE LEGEND
  - FINISH:
    - (P909) OVERALL HOT TIN DIP: (0.00254)/.000100 MIN.
    - (550) SELECT GOLD: (0.000381)/.000015 MIN.
    - OVERALL GOLD FLASH: (0.000051)/.000002 MIN.
    - OVERALL NICKEL UNDERPLATE: (0.000761)/.000030 MIN.
    - (555) SELECT GOLD: (0.000381)/.000015 MIN.
    - OVERALL NICKEL UNDERPLATE: (0.000761)/.000030 MIN.
  - PRODUCT SPECIFICATION: PS-08-50
  - PACKAGING SPECIFICATION: NONE
  - CRIMP ACCEPTS 18-22 GA. WIRE WITH (2.79)/.110 MAX. INSULATION DIA.
  - DIMENSIONS GIVEN ACROSS CENTERLINES ARE SYMMETRICAL ABOUT THOSE CENTERLINES WITHIN HALF THE TOTAL TOLERANCE.
  - TERMINAL FOR USE IN 41695 AND 6345 HOUSINGS.
  - THIS PART CONFORMS TO CLASS B REQUIREMENTS OF COSMETIC SPECIFICATION PS-45499-002.



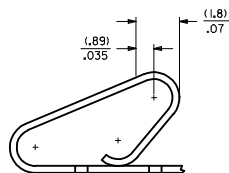
SECTION A-A



SECTION B-B



SECTION C-C



POST-PLATED SELECT GOLD LOCATION

<b>ADD CHAIN VIEW</b> IEC NO: UCP2009-2843 DRAWN BY: JJS CHYKDSOUSEK APPR:FSM TH 2009/05/27 2009/05/28 2009/05/28	<b>QUALITY SYMBOLS</b> =0 =0	<b>GENERAL TOLERANCES (UNLESS SPECIFIED)</b>		<b>DIMENSION STYLE</b> MM/IN	SCALE ---	DESIGN UNITS INCH	THIRD ANGLE PROJECTION	
		4 PLACES ± mm ± INCH 3 PLACES ± .010 ± .010 2 PLACES ± 0.25 ± .014 1 PLACE ± 0.36 ± ---	DRAWN BY: JJS DATE: 02/02/193	CHECKED BY: PATEL DATE: 02/02/193	TITLE <b>CRIMP STYLE                  KK TYPE, .156 CENTERS                  W/ANTIFISHOOKING FEATURE</b>			
		ANGULAR ±1/2°	APPROVED BY: ENZ DATE: 02/02/193	MOLEX INCORPORATED				
		DRAFT WHERE APPLICABLE MUST REMAIN WITHIN DIMENSIONS	MATERIAL NO: <b>SEE CHART</b>	DOCUMENT NO: SD-8818	SHEET NO. 1 OF 1			