

PLEASE CHECK WWW.MOLEX.COM FOR LATEST PART INFORMATION

Part Number: [0008550102](#)
Status: **Active**
Overview: [kk](#)
Description: KK® Crimp Terminal, 22-30 AWG, Bag, Selective Gold (Au), Nickel (Ni) Under Plating

Documents:

[Drawing \(PDF\)](#) [RoHS Certificate of Compliance \(PDF\)](#)
[Product Specification PS-10-07 \(PDF\)](#)

General

Product Family	Crimp Terminals
Series	2759
Crimp Quality Equipment	Yes
Overview	kk
Product Name	KK®

Physical

Gender	Female
Material - Metal	Brass
Material - Plating Mating	Gold
Material - Plating Termination	Nickel
Packaging Type	Bag
Plating min: Mating (µin)	15
Plating min: Mating (µm)	0.375
Plating min: Termination (µin)	30
Plating min: Termination (µm)	0.75
Termination Interface: Style	Crimp or Compression
Wire Insulation Diameter	1.57mm (.062") max.
Wire Size AWG	22, 24, 26, 28, 30
Wire Size mm²	N/A

Material Info

Old Part Number	2759-(555)L
-----------------	-------------

Reference - Drawing Numbers

Packaging Specification	PK-2759-001
Product Specification	PS-10-07
Sales Drawing	SD-2759

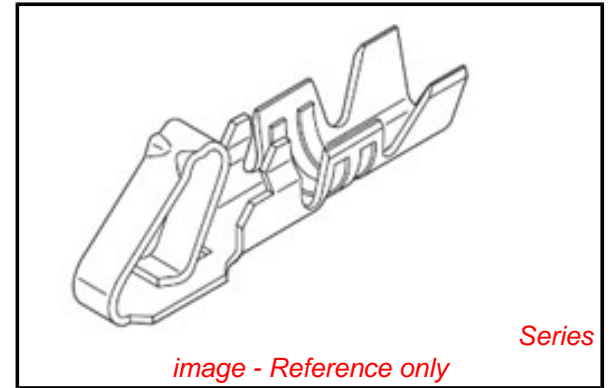


image - Reference only

EU RoHS

**ELV and RoHS
Compliant**
**REACH SVHC
Contains SVHC: No**
**Halogen-Free
Status**

China RoHS



**Need more information on product
environmental compliance?**

Email productcompliance@molex.com
For a multiple part number RoHS Certificate of Compliance, [click here](#)

Please visit the [Contact Us](#) section for any non-product compliance questions.

Search Parts in this Series

[2759Series](#)

Use With

2695 , 5051 , 6745 , 41895

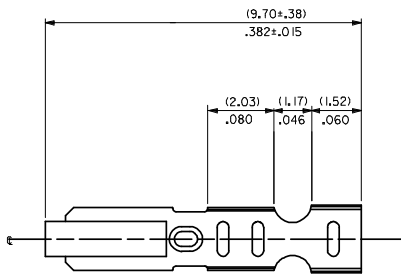
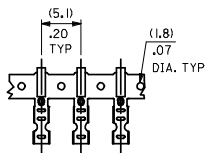
Application Tooling | FAQ

Tooling specifications and manuals are found by selecting the products below. Crimp Height Specifications are then contained in the Application Tooling Specification document.

Global

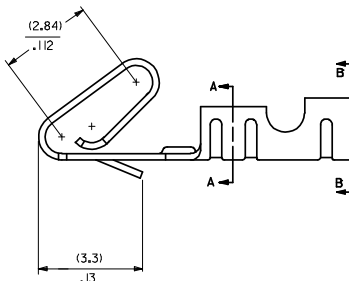
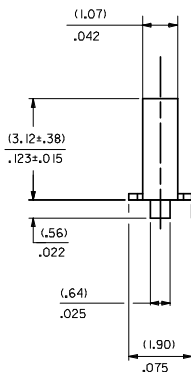
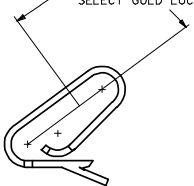
Description	Product #
Hand Crimp Tool	0638118200
Extraction Tool	0011030022
Insertion Tool	0638120000

CARRIER VIEW

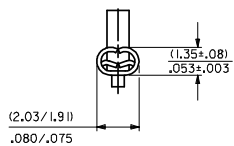


- NOTES
- MATERIAL
(0.203±0.010)/.0080±.0004 THICK BRASS
 - FINISH
102 - OVERALL TIN: (0.00508)/.000200 MIN. TIN OVER (0.00254)/.000100 MIN. COPPER
122 - OVERALL TIN: (0.00381)/.000150 MIN. TIN OVER (0.00076)/.000030 MIN. NICKEL
#P909 - OVERALL HOT TIN DIP (0.00254)/.000100 MIN.
550 - SELECT GOLD (0.00038)/.000015 MIN. OVERALL GOLD FLASH: (0.00005)/.000002 MIN. OVERALL NICKEL UNDERPLATE: (0.00076)/.000030 MIN.
555- SELECT GOLD (0.00038)/.000015 MIN. OVERALL NICKEL UNDERPLATE: (0.00076)/.000030
558 - SELECT GOLD: (0.00076)/.000030 MIN. OVERALL GOLD FLASH: (0.00005)/.000002 MIN. OVERALL NICKEL UNDERPLATE: (0.00127)/.000050 MIN.
*THE PRIMARY SHIPPING CARTON WILL BE LABELED "COMPLIANT TO RoHS DIRECTIVE 2002/95/EC AND ELV ANNEX II OF DIRECTIVE 2000/53/EC." CARTONS WITHOUT THIS LABEL MAY CONTAIN PRODUCT WITH TIN-LEAD PLATING.
 - PRODUCT SPEC: PS-10-07
 - PACKAGING SPECIFICATION: NONE
 - CRIMP IS FOR 22-30 GA WIRE WITH (1.57)/.062 DIA INSULATION MAX.
 - INSERTION FORCE OF TERMINAL INTO (2.54)/.100 CENTERLINE CONNECTOR IS 2.5 LBS. MAX
 - TERMINALS WILL RETAIN 8 LBS PULL FOR 1 MIN. IN A (2.54)/.100 CENTERLINE HOUSING.
 - DIMENSIONS GIVEN ACROSS CENTERLINES ARE SYMMETRICAL ABOUT THOSE CENTERLINES WITHIN HALF THE TOTAL TOLERANCE.
 - CODE LETTER PRECEDING PART NO. DESIGNATES MANUFACTURING LOCATION.
I=IRELAND
 - THIS PART CONFORMS TO CLASS B REQUIREMENTS OF COSMETIC SPECIFICATION PS-45499-002.

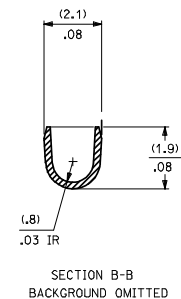
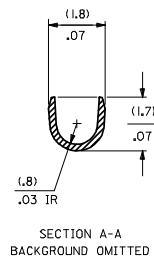
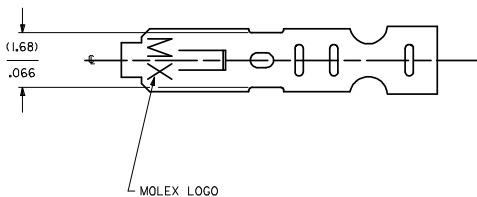
SELECT GOLD LOCATION



CRIMP DETAIL



CRIMPED TERMINAL 2759-IP90 ILC IS USED WITHOUT WIRE AND IS INSERTED INTO HOUSING TO PROVIDE TENSION WHEN ASSEMBLED TO HEADERS DURING SHIPMENT.



- 2759-(***)*
- FORM
 - L=LOOSE
 - C=LOOSE CRIMPED
 - A=CHAIN PER ES-339-A
 - B=CHAIN PER ES-339-B
- PLATING
SEE NOTE 2

SH	REV
1	AS3
2	AS4

UPDATE DIMS
DEC NO: UCP/2008-2190
2008/03/17
DRW: DRW: NADERR
2008/03/18
CHK: KOL: SCHMIDT
2008/03/18
APP: PR: SMITH
2008/03/24

QUALITY SYMBOLS	DESCRIPTION
∇=0	
▽=0	

GENERAL TOLERANCES (UNLESS SPECIFIED)	
mm	INCH
4 PLACES ± .010	± .0004
3 PLACES ± .010	± .0004
2 PLACES ± 0.25	± .010
1 PLACE ± 0.36	± .014
ANGULAR ± 1/2°	

DIMENSION STYLE		SCALE	DESIGN UNITS	THIRD ANGLE PROJECTION
MM/IN	DATE	---	INCH	☐
DRAWN BY	DATE	TITLE		
SAMIEC	07/28/87	CRIMP TERMINAL		
CHECKED BY	DATE	22-30 GA WIRE		
PATEL	07/28/87			
APPROVED BY	DATE			
LENZ	07/28/87			

MATERIAL NO. SD-2759		DOCUMENT NO. SD-2759		SHEET NO. 1 OF 2	

DRAFT WHERE APPLICABLE MUST REMAIN WITHIN DIMENSIONS

THIS DRAWING CONTAINS INFORMATION THAT IS PROPRIETARY TO MOLEX INCORPORATED AND SHOULD NOT BE USED WITHOUT WRITTEN PERMISSION

2759-***															
PART NO.	ENG. NO.	PART NO.	ENG. NO.	PART NO.	ENG. NO.	PART NO.	ENG. NO.	PART NO.	ENG. NO.	PART NO.	ENG. NO.	PART NO.	ENG. NO.	PART NO.	ENG. NO.
08-55-0101	2759-(555)B														
08-55-0102	2759-(555)L														
08-55-0126	2759-(555)A														
08-56-0109	2759-(550)B														
08-56-0110	2759-(550)L														
08-50-0113	2759-(P909)B														
08-50-0114	2759-(P909)L														
08-50-0124	2759-(P909)C														
08-51-0108	2759-(122)B														
	2759-(122)L														
I 08-50-0274	2759-(P909)B														
I 08-50-0275	2759-(P909)L														
I 08-50-0273	2759-(P909)A														
08-55-0130	2759-(558)B														
08-55-0131	2759-(558)L														
08-50-0160	2759-(102)L														
08-50-0159	2759-(102)														

REMOVE *999 PARTS EC NO: UCP2008-0722 DRAWN BY: 2007/08/02 CHKD: JRELL 2007/08/02 APPROVED: JRELL 2007/08/03 AS4 REV DESCRIPTION	QUALITY SYMBOLS	GENERAL TOLERANCES (UNLESS SPECIFIED)	DIMENSION STYLE	SCALE	DESIGN UNITS	THIRD ANGLE PROJECTION										
	$\nabla=0$ $\nabla=0$	<table border="1"> <tr><th>mm</th><th>INCH</th></tr> <tr><td>4 PLACES ± --- ± ---</td><td></td></tr> <tr><td>3 PLACES ± --- ± ---</td><td></td></tr> <tr><td>2 PLACES ± --- ± ---</td><td></td></tr> <tr><td>1 PLACE ± --- ± ---</td><td></td></tr> </table>	mm	INCH	4 PLACES ± --- ± ---		3 PLACES ± --- ± ---		2 PLACES ± --- ± ---		1 PLACE ± --- ± ---		MM/IN	---	INCH	
	mm	INCH														
	4 PLACES ± --- ± ---															
3 PLACES ± --- ± ---																
2 PLACES ± --- ± ---																
1 PLACE ± --- ± ---																
	ANGULAR ±1/2°	DRAWN BY: SAMIEC DATE: 07/28/87 CHECKED BY: PATEL DATE: 07/28/87 APPROVED BY: LENZ DATE: 07/28/87	TITLE	CRIMP TERMINAL 22-30 GA WIRE												
	DRAFT WHERE APPLICABLE MUST REMAIN WITHIN DIMENSIONS	SEE CHART	MATERIAL NO.	DOCUMENT NO.	MOLEX INCORPORATED											
			SIZE D	THIS DRAWING CONTAINS INFORMATION THAT IS PROPRIETARY TO MOLEX INCORPORATED AND SHOULD NOT BE USED WITHOUT WRITTEN PERMISSION												